

Fig. S1 Geophysical logs, lithology, and well-construction data for multiple well site 2N/6E-11H4-8 (STK-2), Morada Lane recharge facility, Eastern San Joaquin Groundwater subs basin, California

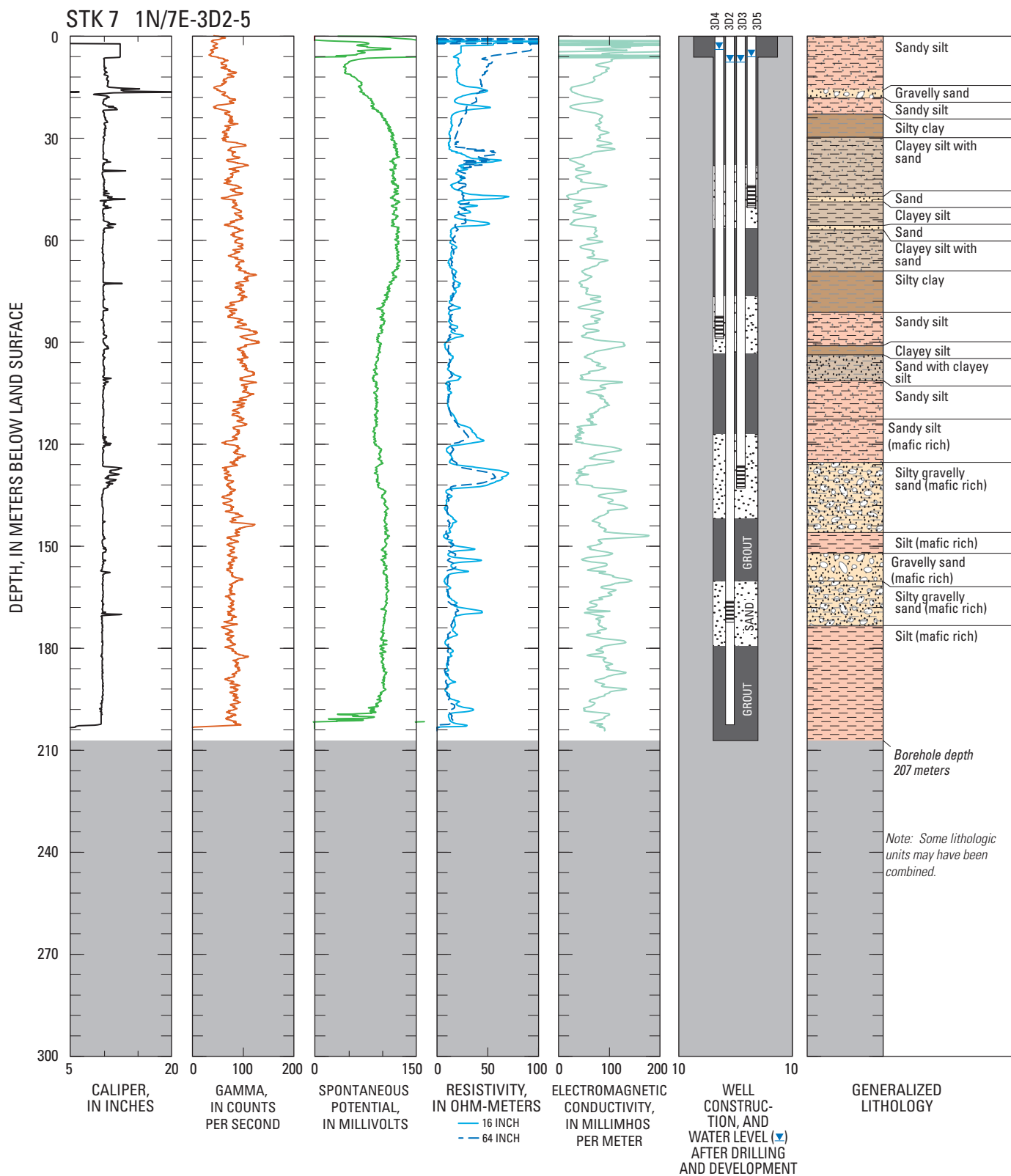


Fig. S2 Geophysical logs, lithology, and well-construction data for multiple well site 1N/7E-3D2-5 (STK-7), Stockton East recharge facility, Eastern San Joaquin Groundwater subbasin, California

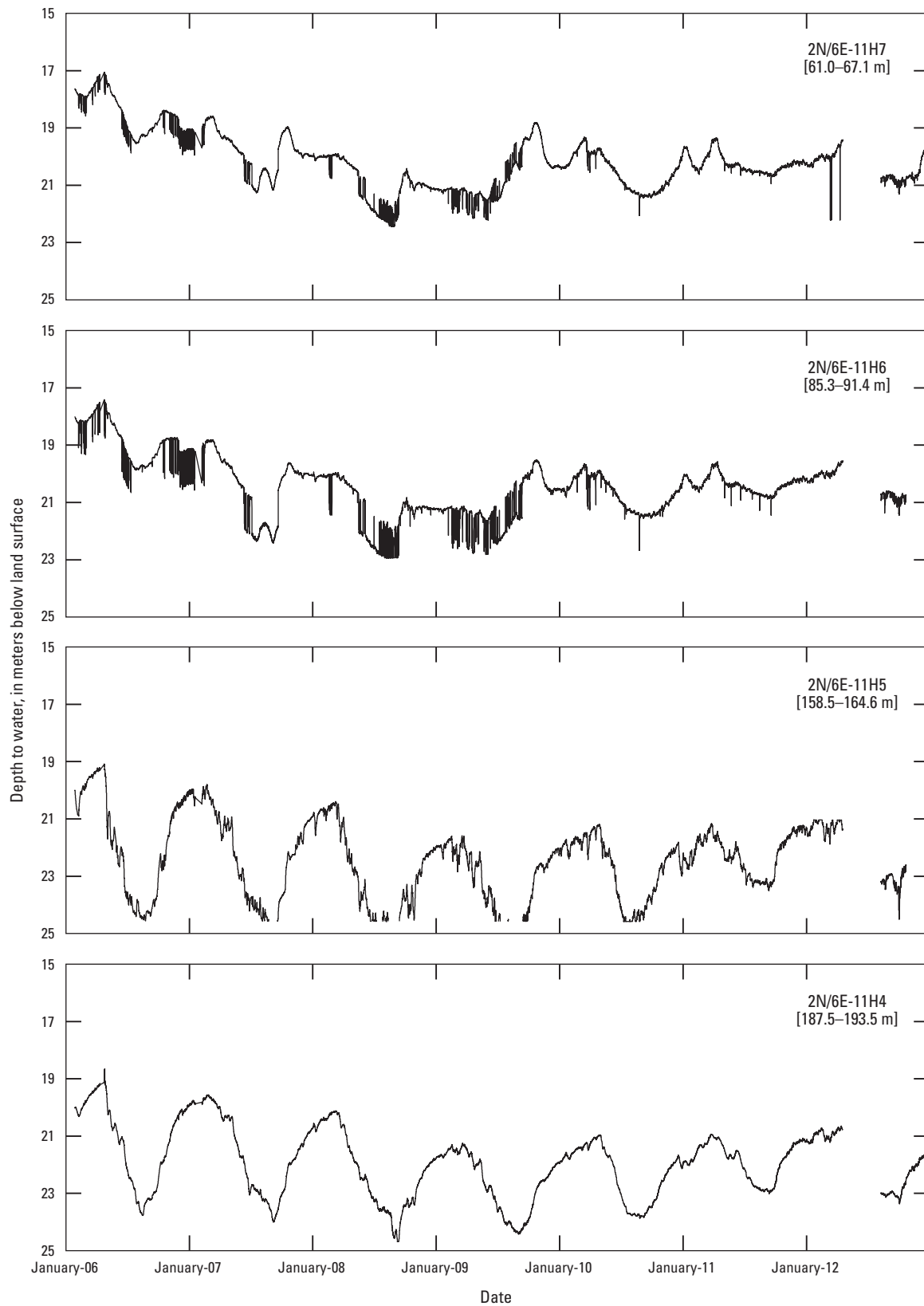


Fig. S3 Water-level hydrographs for multiple-well monitoring site 2N/6E-11H4-7 (STK-2), Morada Lane recharge facility, Eastern San Joaquin Groundwater Subbasin, California 2006 – 2012. Screened interval in meters (m) below land surface shown in [brackets].

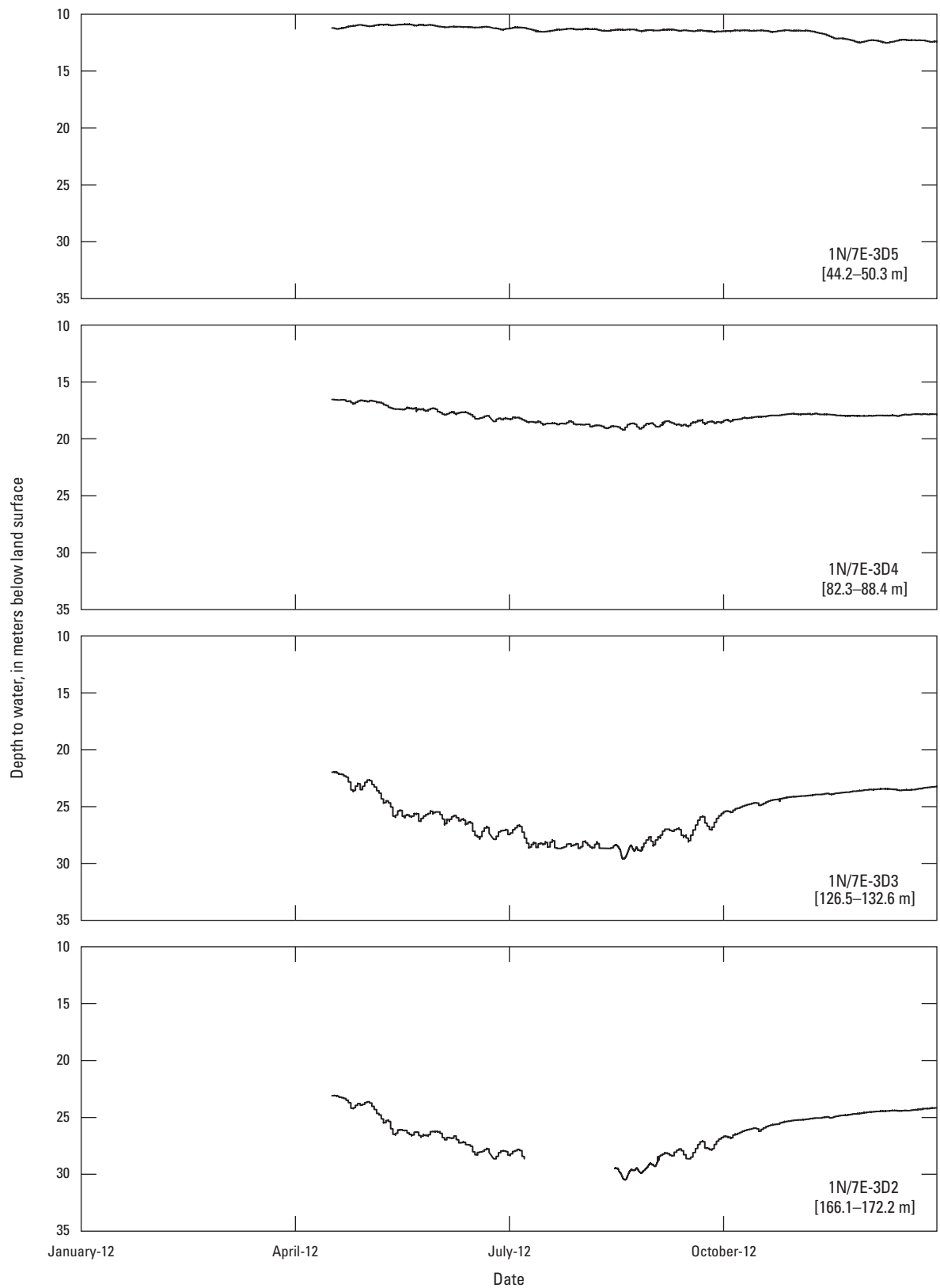


Fig. S4 Water-level hydrographs for multiple-well monitoring site 1N/7E-3D2-5 (STK-7), Stockton East recharge facility, Eastern San Joaquin Groundwater Subbasin, California, April 2012 –December 2012. Screened interval in meters (m) below land surface shown in [brackets].

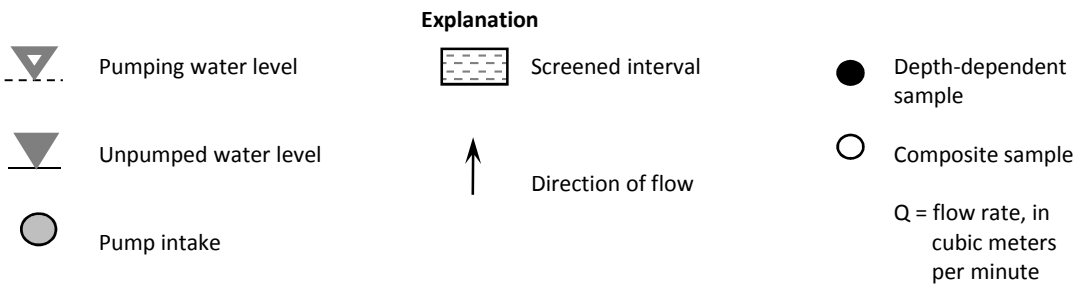
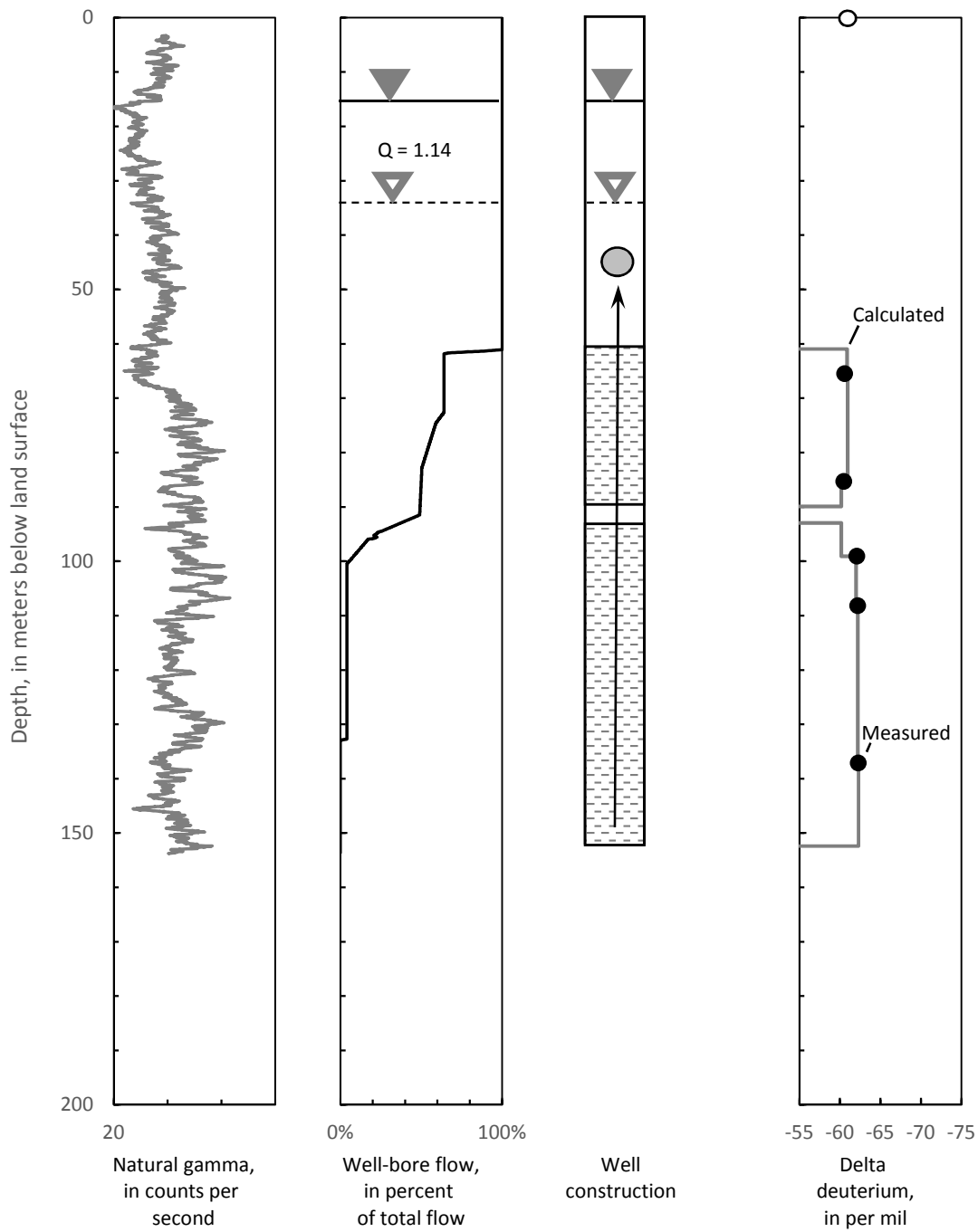


Fig. S5 Gamma log, pumped well-bore flow, well construction, and delta-deuterium depth-dependent water-quality data from well 1N/7E-4G1, Eastern San Joaquin Groundwater subbasin, California

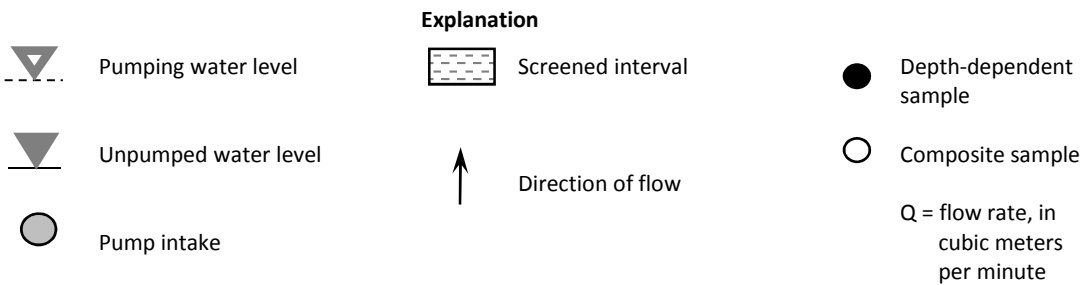
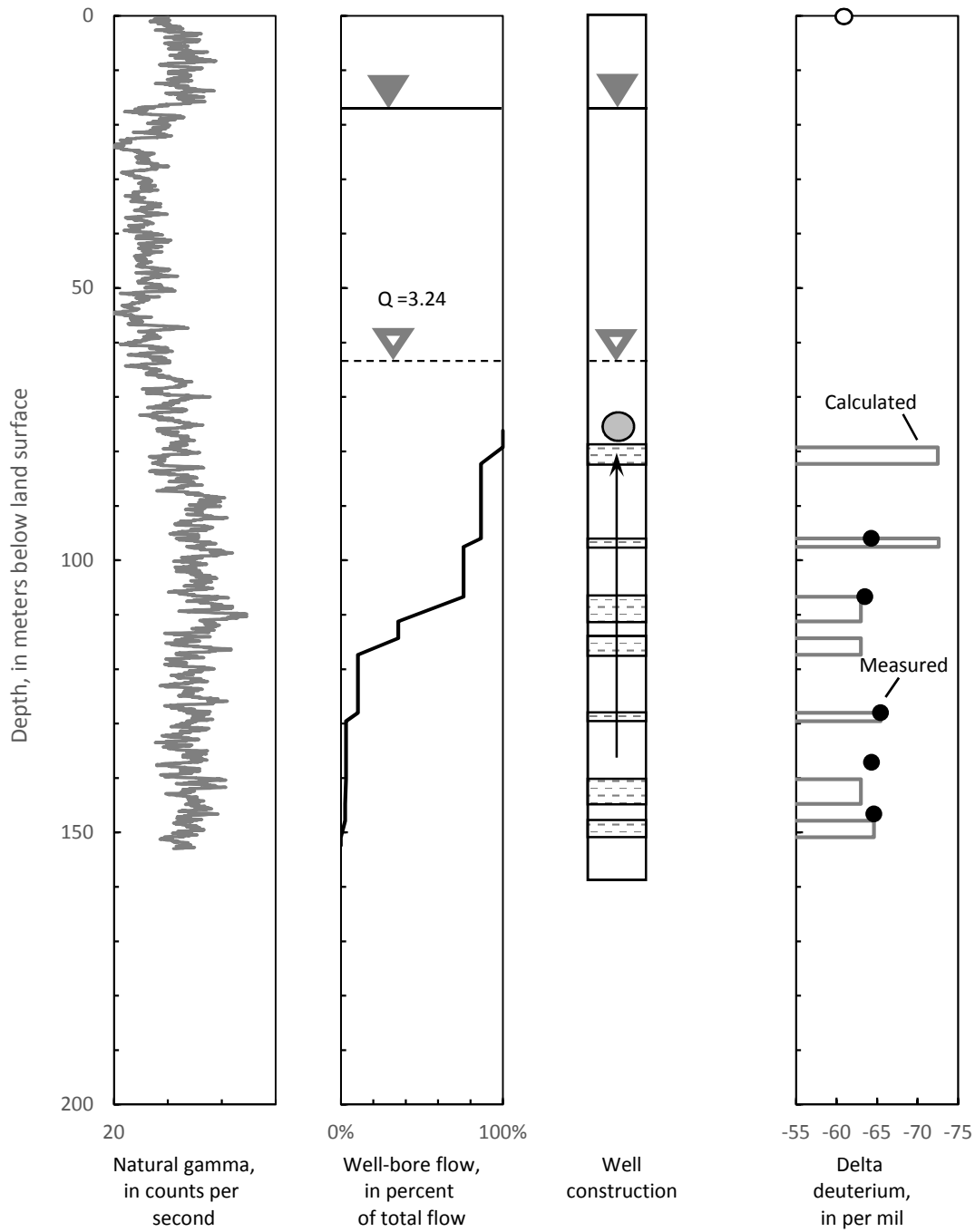


Fig. S6 Gamma log, pumped well-bore flow, well construction, and delta-deuterium depth-dependent water-quality data from well 2N/6E-11H3, Eastern San Joaquin Groundwater subbasin, California

Table S1. Multiple-well site construction information and electromagnetic geophysical logging events, Eastern San Joaquin Groundwater subbasin, California, 2005–2012

State ID ^a	Site	Common name	USGS ID ^b	Screen top		Screen bottom		Surface Elev ^c (m)	Available EM ^d Induction Log Data (Date of collection)	Constructed by
				Depth (m)	Elev ^c (m)	Depth (m)	Elev ^c (m)			
2N/5E-1A6 (1A6) 2N/5E-1A5 (1A5) 2N/5E-1A4 (1A4) 2N/5E-1A3 (1A3) 2N/5E-1A2 (1A2)	STK-1 (OAK GROVE PARK)	STK-1 WELL at 20.7 STK-1 WELL at 73.2 STK-1 WELL at 115.8 STK-1 WELL at 164.6 STK-1 WELL at 268.2	380316121221505 380316121221504 380316121221503 380316121221502 380316121221501	17.7 67.1 109.7 158.5 262.1	-16.5 -65.8 -108.5 -157.3 -260.9	20.7 73.2 115.8 164.6 268.2	-19.5 -71.9 -114.6 -163.4 -267.0	1.2	5/3/2005, 1/24/2006, 4/10/2007, 9/25/2007, 4/16/2012	USGS
2N/6E-11H8 (11H8) 2N/6E-11H7 (11H7) 2N/6E-11H6 (11H6) 2N/6E-11H5 (11H5) 2N/6E-11H4 (11H4)	STK-2 (MORADA LANE)	STK-2 WELL at 34.8 STK-2 WELL at 67.1 STK-2 WELL at 91.4 STK-2 WELL at 164.6 STK-2 WELL at 193.5	380207121164101 380209121164104 380209121164103 380209121164102 380209121164101	33.2 61.0 85.3 158.5 187.5	-25.0 -50.0 -74.3 -147.5 -176.5	34.8 67.1 91.4 164.6 193.5	-26.6 -56.1 -80.4 -153.6 -182.5	11	5/13/2005, 1/23/2006, 4/10/2007, 9/26/2007, 4/19/2012	USGS
1N/6E-4J5 (4J5) 1N/6E-4J4 (4J4) 1N/6E-4J3 (4J3)	STK-4 (VICTORY PARK)	STK-4 WELL at 67.1 STK-4 WELL at 109.7 STK-4 WELL at 170.7	375735121184903 375735121184902 375735121184901	61.0 103.6 164.6	-58.5 -101.2 -162.2	67.1 109.7 170.7	-64.6 -107.3 -168.3	2.4	9/13/2005, 1/26/2006, 3/30/2007, 9/24/2007, 4/18/2012	USGS
2N/6E-8N3 (8N3) 2N/6E-8N2 (8N2) 2N/6E-8N1 (8N1)	STK-5 (SANDMAN PARK)	STK-5 WELL at 70.1 STK-5 WELL at 131.1 STK-5 WELL at 176.8	380147121205003 380147121205002 380147121205001	64.0 125.0 170.7	-63.1 -124.1 -169.8	70.1 131.1 176.8	-69.2 -130.1 -175.9	0.9	5/13/2006, 7/13/2006, 4/11/2007, 5/24/2007, 9/26/2007, 4/18/2012 ^e	USGS
2N/6E-29H3 (29H3) 2N/6E-29H2 (29H2) 2N/6E-29H1 (29H1)	STK-6 (ATHERTON PARK)	STK-6 WELL at 79.2 STK-6 WELL at 143.3 STK-6 WELL at 170.7	375944121200503 375944121200502 375944121200501	73.2 137.2 164.6	-71.6 -135.6 -163.1	79.2 143.3 170.7	-77.7 -141.7 -169.2	1.5	5/22/2006, 6/20/2006, 4/11/2007, 9/26/2007, 4/20/2012	USGS
1N/7E-3D5 (3D5) 1N/7E-3D4 (3D4) 1N/7E-3D3 (3D3) 1N/7E-3D2 (3D2)	STK-7 (STOCKTON EAST)	STK-7 WELL at 50.3 STK-7 WELL at 88.4 STK-7 WELL at 132.6 STK-7 WELL at 172.2	375805121121104 375805121121103 375805121121102 375805121121101	44.2 82.3 126.5 166.1	-31.7 -69.8 -114.0 -153.6	50.3 88.4 132.6 172.2	-37.8 -75.9 -120.1 -159.7	12.5	4/17/2012	USGS
3N/9E-12G1 (12G1) 3N/9E-12G2 (12G2) 3N/9E-12G3 (12G3) 3N/9E-12G4 (12G4)	CCTR (CALVERAS NORTH)	CCTR WELL at 132.6 CCTR WELL at 111.3 CCTR WELL at 70.1 CCTR WELL at 33.5	380738120555601 380738120555602 380738120555603 380738120555604	126.5 108.2 64.0 27.4	-51.8 -33.5 10.7 47.2	132.6 111.3 70.1 33.5	-57.9 -36.6 4.6 41.1	74.7	--	USGS
4N/9E-36A1 (36A1) 4N/9E-36A2 (36A2) 4N/9E-36A3 (36A3)	CCNA (CALVERAS SOUTH)	CCNA WELL at 118.9 CCNA WELL at 82.3 CCNA WELL at 41.1	380946120554401 380946120554402 380946120554403	112.8 76.2 35.1	-33.5 3.0 44.2	118.9 82.3 41.1	-39.6 -3.0 38.1	79.2	--	USGS
1N/6E-36C3 (36C3) 1N/6E-36C4 (36C4) 1N/6E-36C5 (36C5)	SPERRY ROAD	SPERRY WELL at 140.2 SPERRY WELL at 86.0 SPERRY WELL at 95.1 SPERRY WELL at 37.8	375349121160901 375349121160902 375349121160903	134.1 79.9 92.0 34.7	-129.5 -75.3 -87.5 -30.2	140.2 86.0 95.1 37.8	-135.6 -81.4 -90.5 -33.2	4.6	7/15/2004, 1/26/2006, 3/29/2007, 9/24/2007, 4/17/2012 ^e	OTHERS
2N/6E-20E1 (20E1) 2N/6E-20E2 (20E2) 2N/6E-20E3 (20E3)	SWENSON PARK	SWENSEN WELL at 153.0 SWENSEN WELL at 95.7 SWENSEN WELL at 62.2	380026121204401 380026121204402 380026121204403	146.9 89.6 59.1	-145.7 -88.4 -57.9	153.0 95.7 62.2	-151.8 -94.5 -61.0	1.2	7/15/2004, 1/24/2006, 3/28/2007, 9/25/2007, 4/19/2012	OTHERS
2N/6E-12H2 (12H2) 2N/6E-12H3 (12H3)	NORTHEAST MORADA	NE MORADA WELL at 118.9 NE MORADA WELL at 88.4	380216121154001 380216121154002	115.8 85.4	-105.8 -75.3	118.9 88.4	-108.8 -78.3	10.1	--	OTHERS
2N/6E-24P1 (24P1) 2N/6E-24P2 (24P2) 2N/6E-24P3 (24P3)	BLOSSOM RANCH	BLOSSOM RANCH WELL at 158.5 BLOSSOM RANCH WELL at 137.1 BLOSSOM RANCH WELL at 65.5	380004121160601 380004121160602 380004121160603	152.4 121.9 59.4	-144.8 -114.3 -51.8	158.5 137.2 65.5	-150.9 -129.6 -57.9	7.6	--	OTHERS
2N/7E-7K7 (7K7) 2N/7E-07K6 (7K6)	EAST MORADA	E MORADA WELL at 68.6 E MORADA WELL at 137.8	380207121145702 380207121145701	65.5 134.7	-54.3 -123.5	68.6 137.8	-57.3 -126.5	11.3	--	OTHERS

^a California State Well Numbering System identification

^b U.S. Geological Survey identification number

^c Elevation above mean sea level

^d Electromagnetic induction log data

^e Obstructions in wells at sites STK-5 and Sperry Road prevented logging to the bottom of the borehole.