

# Application of numerical models to assess multi-source saltwater intrusion under natural and pumping conditions in the Great Maputo aquifer, Mozambique

Alberto Casillas<sup>1\*</sup>, Yangxiao Zhou<sup>13</sup>, Tibor Y. Stigter<sup>1</sup>, F.E.F. Mussáa<sup>2</sup>, D. Juárez<sup>2</sup>

1. IHE-Delft Institute for Water Education, PO Box 3015, 2601 DA Delft, The Netherlands.
2. Eduardo Mondlane University (EMU), Maputo, Mozambique
3. Visiting professor at Hebei University of Geosciences, Shijiazhuang City, China

Electronic supplementary material – Hydrogeology Journal.

\*Email: [JesusAlberto.CasillasTrasvina@ugent.be](mailto:JesusAlberto.CasillasTrasvina@ugent.be)

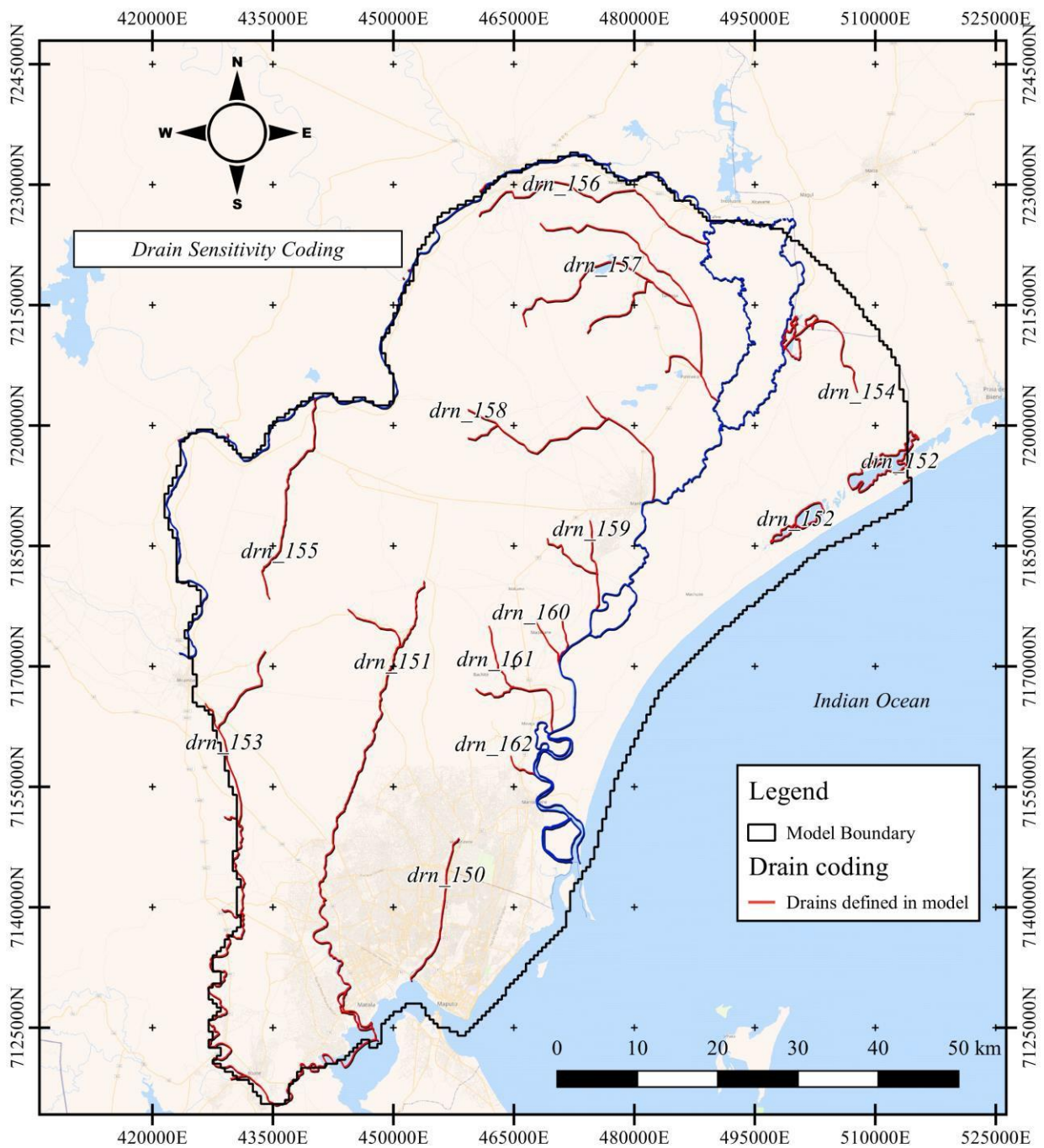


Figure S1 Coding for drains defined in the model, presented in section 'Sensitivity analysis'