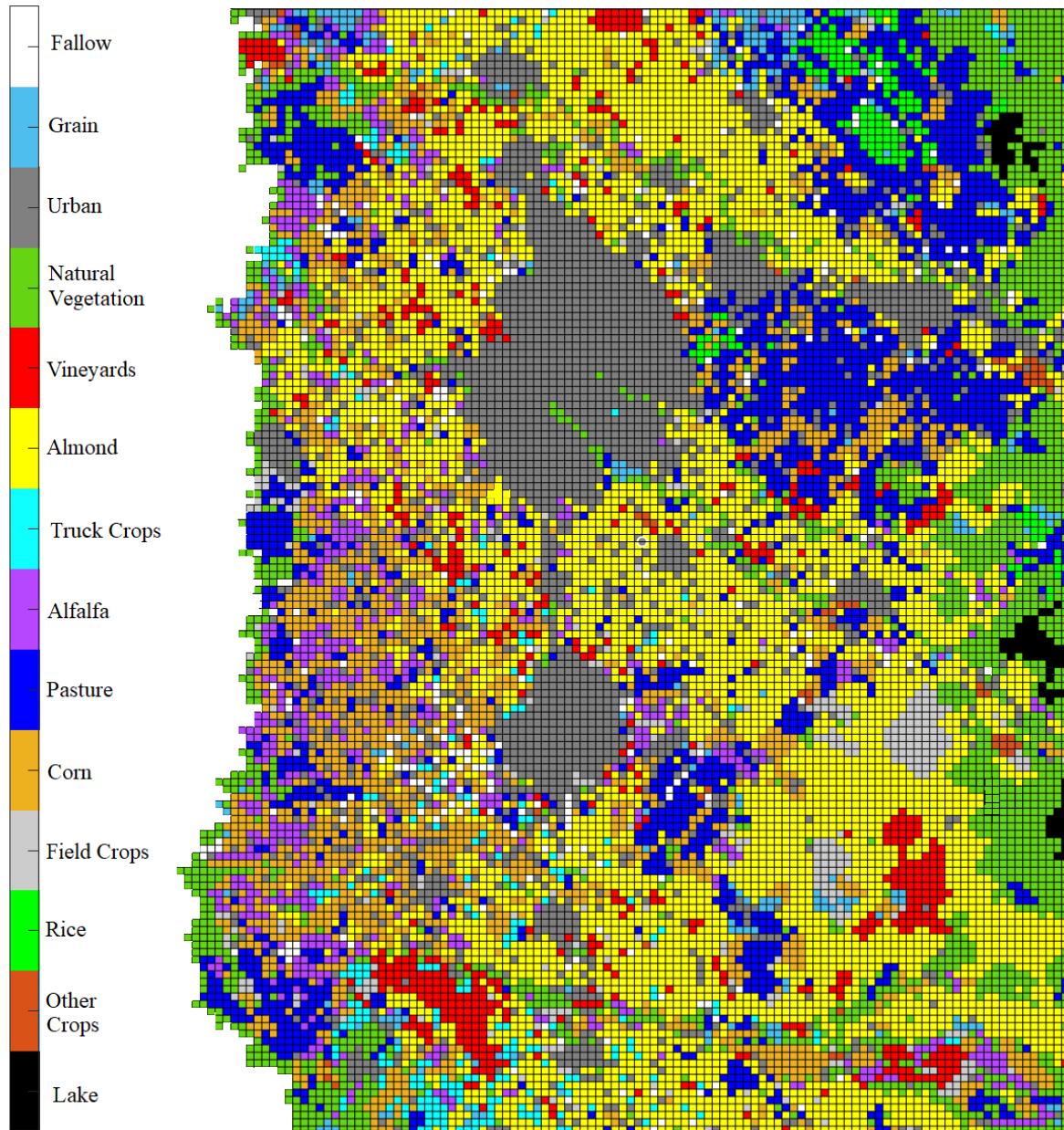


Effects of upscaling temporal resolution of groundwater flow and transport boundary conditions on the performance of nitrate-transport models at the regional management scale

Mehrdad Bastani ^{a,*}, Thomas Harter ^b

^a Department of Civil and Environmental Engineering, University of California Davis

^b Department of Land, Air, and Water Resources, University of California Davis



* Corresponding author. E-mail address: bastani.mehrdad@gmail.com

Fig. S1: Distribution of agricultural land use in the study area in December 2004 (Phillips et al., 2015)

ESM Reference

Phillips, S.P., Rewis, D.L., and Traum, J.A. (2015) “Hydrologic model of the Modesto Region, California, 1960–2004”, U.S. Geological Survey Scientific Investigations Report, 2015–5045, 69 p., <http://dx.doi.org/10.3133/sir20155045>.