

## Supplementary Material

# Variation in wealth and educational drivers of fertility decline across 45 countries

Heidi Colleran and Kristin Snopkowski

---

### Contents:

**Figs. S1-S2** Distribution of (S1) wealth ranges and (S2) education ranges (measured in standard deviations) across countries.

**Figs. S3-S4** Supplementary plots of beta coefficients ( $\pm$  standard errors) of wealth (S3) and education (S4) on fertility for all countries with multiple waves of data in the DHS (85 waves in 36 countries), using unstandardized variables.

**Table S1** Sample characteristics by country for sample with one wave per country

**Table S2** Sample characteristics for second sample with multiple waves per country

**Table S3** Fixed model coefficients from the multilevel varying slopes model of wealth, education, and mediators on number of live births, fit by maximum likelihood using the Laplace approximation.

**Table S4** Varying slope coefficients for each country from the multilevel varying slopes model shown in Table S3 of ESM

**Table S5** Fixed model coefficients from the multilevel varying slopes model of wealth, education, and mediators on number of live births using unstandardized variables

**Table S6** Varying slope coefficients from the multilevel varying slopes model using unstandardized variables shown in Table S5 of ESM

**Table S7** Fixed model coefficients from the multilevel varying slopes model of wealth, education, and mediators on alternative outcome: number of living children

**Table S8** Varying slope coefficients from the multilevel varying slopes model of wealth, education, and mediators on alternative outcome: number of living children

**Table S9** Fixed model coefficients from the multilevel varying slopes model of wealth, education, and mediators on alternative outcome: number of living children using unstandardized variables

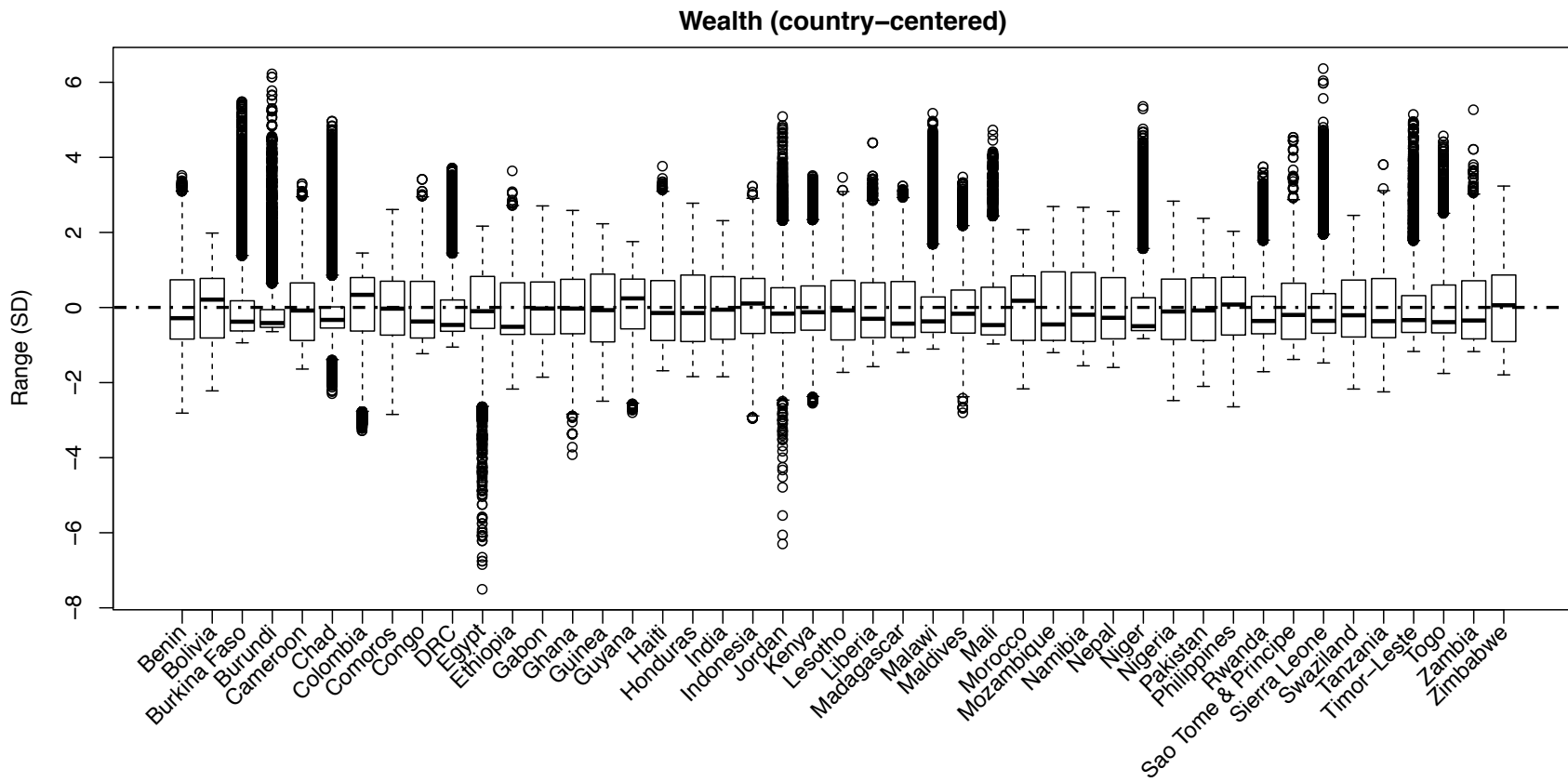
**Table S10** Varying slope coefficients from the multilevel varying slopes model of wealth, education, and mediators on alternative outcome: number of living children using unstandardized variables

**The following tables can be found in the Supplementary Materials Excel File**

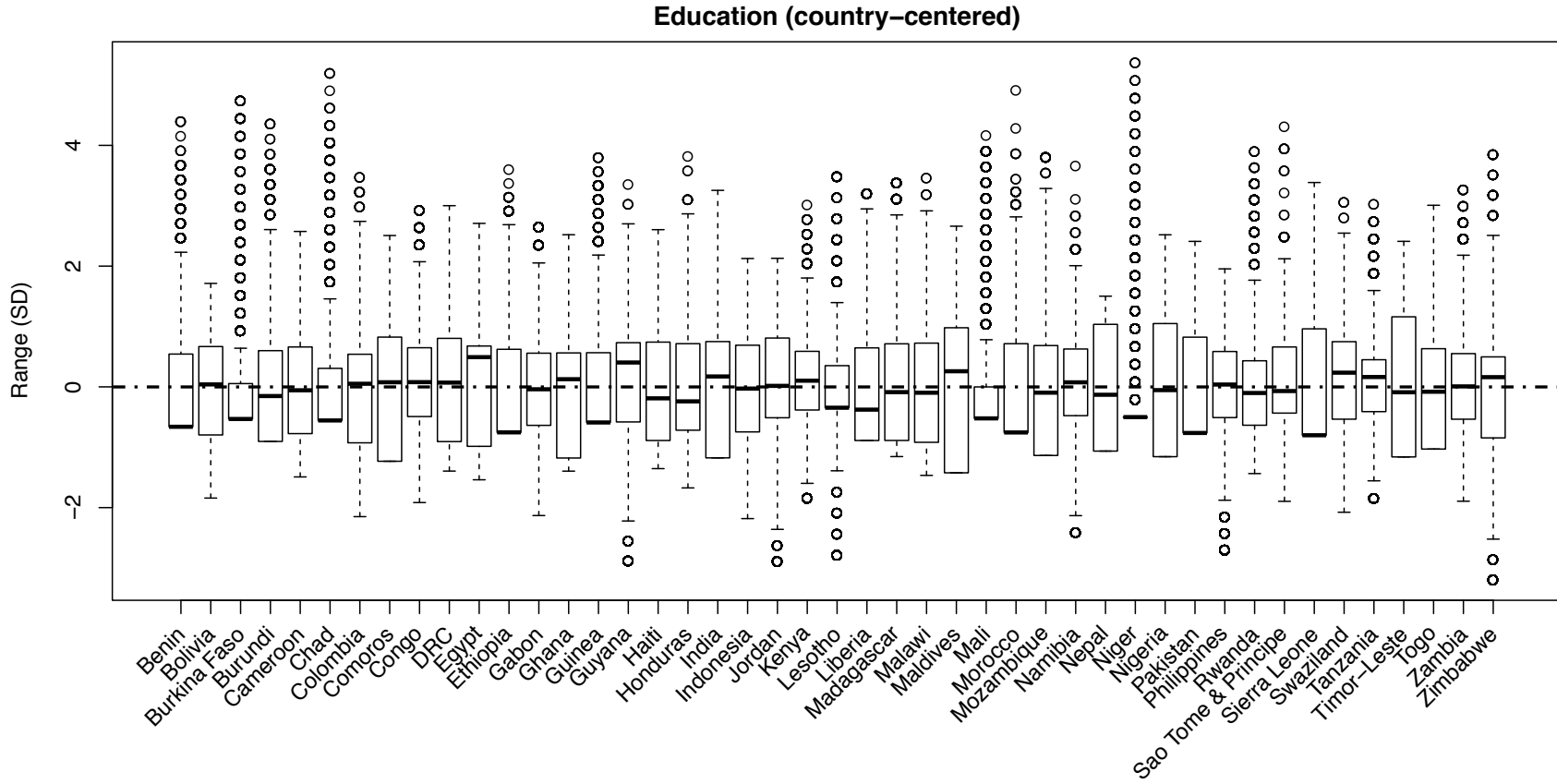
**Table S11** Standardized coefficients (with standard errors) for paths in Structural Equation Models for each country.

**Table S12** Standardized coefficients (with standard errors) for paths in Structural Equation Models for each country with the alternative outcome: number of living children

**Table S13** Standardized coefficients (with standard errors) for paths in Structural Equation Models for each country with multiple waves. Color coded by whether the effect is increasing (green), decreasing (red), or inconsistent/staying the same (black) through time.

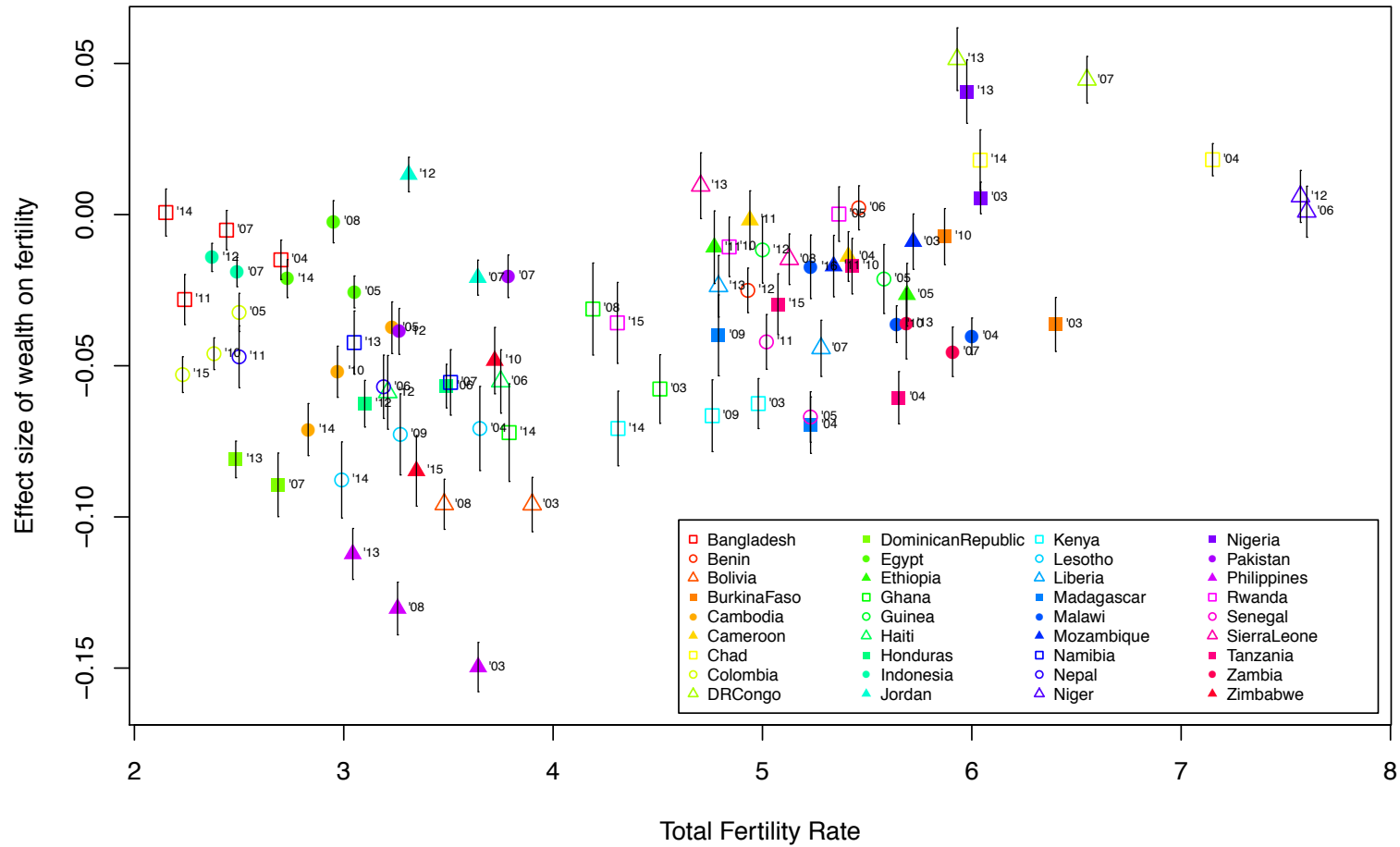


**Fig. S1** Distribution of wealth ranges (measured in standard deviations) across countries.



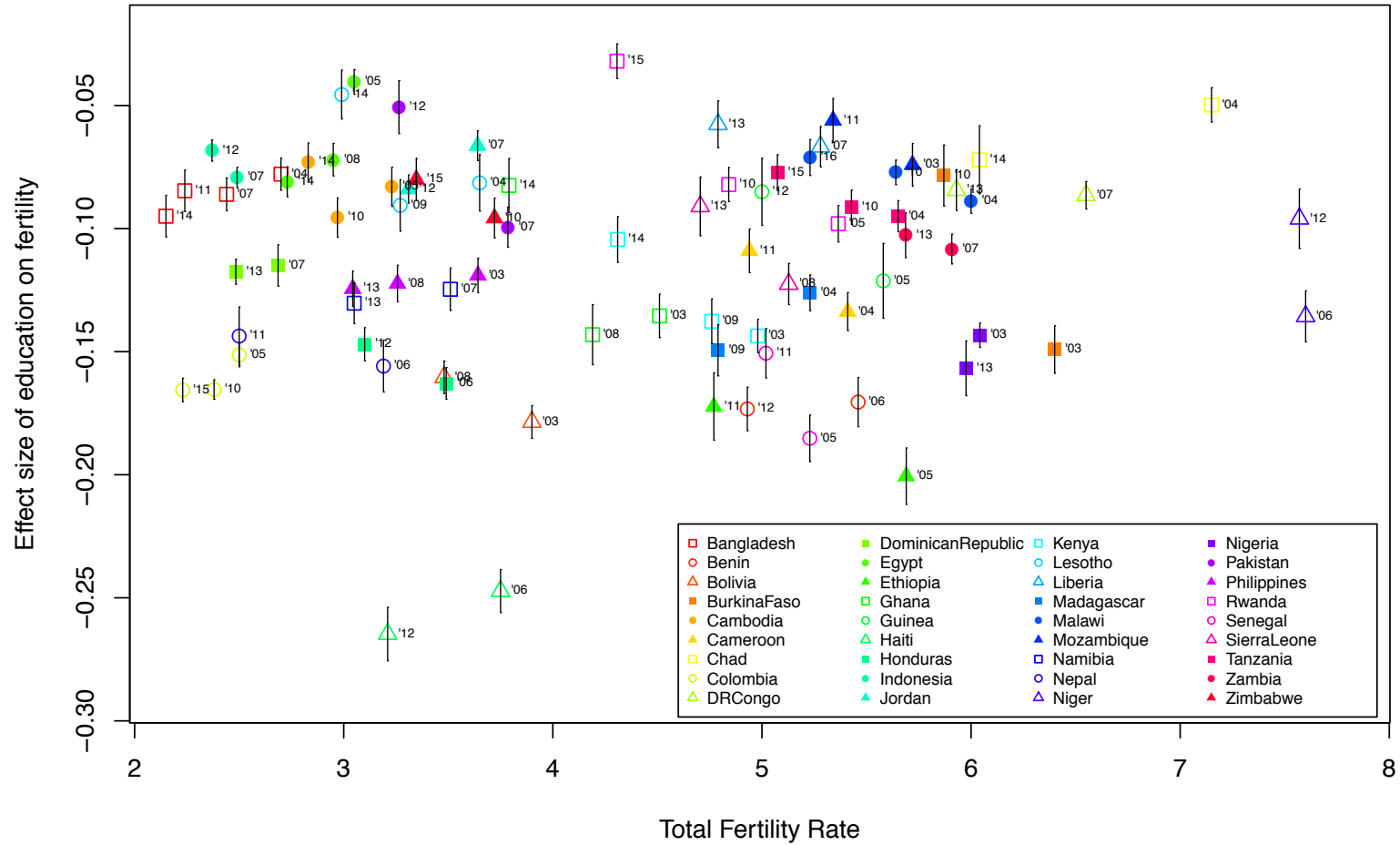
**Fig. S2** Distribution of education ranges (measured in standard deviations) across countries.

## Number of living children



**Fig. S3** Beta coefficients ( $\pm$  standard errors) of wealth regressed on fertility (number of living children) for all countries with multiple waves of data in the DHS (85 waves in 36 countries).

## Number of living children



**Fig. S4** Beta coefficients ( $\pm$  standard errors) of education regressed on fertility (measured as number of living children) for all countries with multiple waves of data in the DHS (85 waves in 36 countries)

**Table S1** Sample characteristics by country for sample with one wave per country

Country	Sample Size	Year Surveyed	Total Fertility Rate
Benin	16599	2011-2012	4.93
Bolivia	16939	2008	3.48
Burkina Faso	17087	2010	5.87
Burundi	9389	2010	6.3
Cameroon	15426	2011	4.94
Chad	17719	2014-2015	6.04
Colombia	49562	2010	2.38
Comoros	5329	2012	4.78
Congo	10819	2011-2012	5.05
Democratic Republic of Congo	18827	2013	5.93
Egypt*	21762	2014	2.73
Ethiopia	16515	2003	6.05
Gabon	8422	2012	4.14
Ghana	9396	2014	3.79
Guinea	9142	2012	5
Guyana	4996	2009	2.72
Haiti	14287	2012	3.21
Honduras	22757	2011-2012	3.05
India	124385	2005-2006	2.75
Indonesia	45607	2012	2.37
Jordan*	11352	2012	3.31
Kenya	31079	2014	4.31
Lesotho	6621	2014	2.99
Liberia	9239	2013	4.79
Madagascar	17375	2008-2009	4.72
Malawi	23020	2010	5.64
Maldives*	7131	2009	2.36
Mali	10424	2012-2013	6.85
Morocco	16798	2003	2.47
Mozambique	13745	2011	5.34
Namibia	9176	2013	3.05
Nepal	12674	2011	2.5
Niger	11160	2012	7.57
Nigeria	38948	2013	5.98
Pakistan*	13558	2012-2013	3.26
Philippines	16155	2013	3.04
Rwanda	13497	2014-2015	4.31
Sao Tome & Principe	2615	2008-2009	4.41
Sierra Leone	16658	2013	4.71
Swaziland	4987	2006-2007	3.82
Tanzania	13266	2015-2016	5.07
Timor-Leste	13137	2009-2010	6.36
Togo	9480	2013-2014	4.64
Zambia	16411	2013-2014	5.69
Zimbabwe <sup>^</sup>	9955	2015	3.35
Total	803426		

Note: \* represents countries where only ever-married women were interviewed. <sup>^</sup> In Zimbabwe survey did not converge in the multi-level model, but is included in other models. In Colombia and in Jordan, women's work status was a binary variable. Total fertility rate was collected from <https://ourworldindata.org/grapher/total-fertility-rate?tab=data>

**Table S2** Sample characteristics for second sample with multiple waves per country

Country	Sample Year 1	Sample Year 2	Sample Year 3	TFR Year 1	TFR Year 2	TFR Year 3	Combined Sample size
Bangladesh	2014*	2011*	2007* (+2004*)	2.15	2.24	2.44 (2.70)	57,908
Benin	2011-2012	2006		4.93	5.46		34,393
Bolivia	2008	2003		3.48	3.9		34,593
Burkina Faso	2010	2003		5.87	6.4		29,564
Cambodia	2014	2010	2005	2.83	2.97	3.23	53,155
Cameroon	2011	2004		4.94	5.41		26,082
Chad	2014-2015	2004		6.04	7.15		23,804
Colombia	2015	2010 <sup>^</sup>	2005 <sup>^</sup>	2.23	2.38	2.5	123,684
Democratic Republic of Congo	2013-2014	2007		5.93	6.55		28,822
Dominican Republic	2013	2007		2.48	2.69		36,567
Egypt	2014*	2008*	2005*	2.73	2.95	3.05	57,763
Ethiopia	2011	2005		4.77	5.69		30,585
Ghana	2014	2008	2003	3.79	4.19	4.51	20,003
Guinea	2012	2005		5	5.58		17,096
Haiti	2012	2005-2006		3.21	3.75		25,044
Honduras	2011-2012	2005-2006		3.1	3.49		42,705
Indonesia	2012	2007*		2.37	2.49		78,502
Jordan	2012* <sup>^</sup>	2007* <sup>^</sup>		3.31	3.64		22,228
Kenya	2014	2008-2009	2003	4.31	4.76	4.98	47,718
Lesotho	2014	2009	2004	2.99	3.27	3.65	21,340
Liberia	2013	2007		4.79	5.28		16,331
Madagascar	2008-2009	2003-2004		4.79	5.23		25,324
Malawi	2015-2016	2010	2004	5.23	5.64	6.00	59,280
Mozambique	2011	2003		5.34	5.72		26,163
Namibia	2013	2006-2007		3.05	3.51		18,980
Nepal	2011	2006		2.5	3.19		23,467
Niger	2012	2006		7.57	7.6		20,383
Nigeria	2013	2003		5.98	6.04		46,568
Pakistan	2012-2013*	2006-2007* <sup>^</sup>		3.26	3.79		23,581
Philippines	2013	2008	2003	3.04	3.26	3.64	43,382
Rwanda	2014-2015	2010	2005	4.31	4.84	5.37	38,489
Senegal	2010-2011	2005		5.02	5.23		30,290
Sierra Leone	2013	2008		4.71	5.13		24,032
Tanzania	2015-2016	2010	2004-2005	5.07	5.43	5.65	33,734
Zambia	2013-2014	2007		5.69	5.91		23,557
Zimbabwe	2015	2010-2011	2005-2006	3.35	3.72	3.97	28,033

Note: <sup>^</sup> women's work is a binary variable. \*only ever-married women surveyed



**Table S3** Fixed model coefficients from the multilevel varying slopes model of wealth, education, and mediators on number of live births, fit by maximum likelihood using the Laplace approximation.

**Multilevel Poisson model of number of live births**

**n individuals:** 802948  
**n countries:** 45

<b>Random effects: Groups</b>					
	<b>Name</b>	<b>Variance</b>	<b>SD</b>	<b>Correlation</b>	
country	(Intercept)	0.070	0.26		
	wealth (centered)	0.001	0.04	0.64	
	education (centered)	0.004	0.06	0.38	-0.08
<b>Fixed effects:</b>					
	<b>Estimate</b>	<b>SE</b>	<b>z value</b>	<b>Pr(&gt; z )</b>	
(Intercept)	0.849	0.039	21.80	< 2e-16	***
age	0.977	0.001	743.80	< 2e-16	***
age squared	-0.347	0.001	-377.10	< 2e-16	***
wealth (centered)	-0.034	0.006	-6.00	0.00	***
education (centered)	-0.141	0.009	-15.40	< 2e-16	***
womens work (none - reference)	.	.	.	.	.
womens work (works occasionally)	-0.029	0.005	-6.00	0.00	***
womens work (works seasonally)	-0.018	0.002	-9.60	< 2e-16	***
womens work (works all year)	-0.008	0.002	-3.50	0.00	***
contraceptive use (none - reference)	-0.019	0.003	-5.80	0.00	***
contraceptive use (traditional)	0.206	0.003	62.40	< 2e-16	***
contraceptive use (modern)	0.239	0.002	142.10	< 2e-16	***
cluster mortality rate	-0.002	0.001	-2.50	0.01	*
average number of births per cluster	0.208	0.001	224.70	< 2e-16	***
interaction: wealth*education	-0.029	0.001	-38.00	< 2e-16	***
<b>Model fit statistics</b>					
	<b>AIC</b>	<b>BIC</b>	<b>logLik</b>	<b>deviance</b>	<b>df residual</b>
	2449891	2450123	-1224926	2449851	802928
<b>Scaled residuals:</b>					
	<b>Min</b>	<b>1Q</b>	<b>Median</b>	<b>3Q</b>	<b>Max</b>
	-3.2471	-0.6396	-0.1875	0.5327	6.8507

**Table S4** Varying slope coefficients for each country from the multilevel varying slopes model shown in Table S3 in ESM

<b>Country</b>	<b>Wealth (standardised)</b>		<b>Education (standardised)</b>	
	<b>Beta coefficient</b>	<b>Standard error</b>	<b>Beta coefficient</b>	<b>Standard error</b>
Benin	0.00	0.01	-0.16	0.01
Bolivia	-0.03	0.01	-0.21	0.01
Burkina Faso	-0.02	0.01	-0.16	0.01
Burundi	0.02	0.01	-0.15	0.01
Cameroon	-0.02	0.01	-0.14	0.01
Chad	0.02	0.00	-0.05	0.01
Colombia	-0.08	0.00	-0.16	0.00
Comoros	-0.04	0.01	-0.31	0.01
Congo	-0.03	0.01	-0.10	0.01
DRC	0.00	0.01	-0.09	0.00
Egypt	-0.05	0.00	-0.04	0.00
Ethiopia	-0.03	0.01	-0.25	0.01
Gabon	-0.04	0.01	-0.10	0.01
Ghana	-0.02	0.01	-0.17	0.01
Guinea	-0.01	0.01	-0.16	0.01
Guyana	-0.12	0.01	-0.08	0.01
Haiti	-0.02	0.01	-0.31	0.01
Honduras	-0.06	0.01	-0.17	0.01
India	-0.08	0.00	-0.15	0.00
Indonesia	-0.05	0.00	-0.13	0.00
Jordan	-0.01	0.01	-0.09	0.01
Kenya	-0.05	0.00	-0.14	0.00
Lesotho	-0.10	0.01	-0.11	0.01
Liberia	-0.02	0.01	-0.08	0.01
Madagascar	-0.05	0.01	-0.13	0.01
Malawi	-0.04	0.00	-0.08	0.00
Maldives	-0.01	0.01	-0.20	0.01
Mali	-0.01	0.01	-0.08	0.01
Morocco	-0.01	0.01	-0.29	0.01
Mozambique	-0.04	0.01	-0.07	0.01
Namibia	-0.06	0.01	-0.15	0.01
Nepal	-0.09	0.01	-0.13	0.01
Niger	0.03	0.01	-0.12	0.01
Nigeria	0.02	0.00	-0.16	0.00
Pakistan	0.00	0.01	-0.09	0.01
Philippines	-0.13	0.01	-0.15	0.01
Rwanda	-0.01	0.01	-0.13	0.01
Sao Tome & Principe	-0.03	0.01	-0.14	0.01
Sierra Leone	-0.02	0.01	-0.15	0.01
Swaziland	-0.07	0.01	-0.13	0.01
Tanzania	-0.07	0.01	-0.10	0.01
Timor-Leste	0.02	0.01	-0.13	0.01
Togo	-0.03	0.01	-0.18	0.01
Zambia	-0.03	0.01	-0.11	0.01
Zimbabwe	-0.06	0.01	-0.12	0.01

**Table S5** Fixed model coefficients from the multilevel varying slopes model of wealth, education, and mediators on number of live births using unstandardized variables

<b>Multilevel Poisson model of number of live births</b>					
<b>n individuals:</b>	802948				
<b>n countries:</b>	45				
<hr/>					
<b>Random effects: Groups</b>	<b>Name</b>	<b>Variance</b>	<b>SD</b>	<b>Correlation</b>	
country	(Intercept)	0.052	0.23		
	wealth	0.001	0.03	0.46	
	education	0.004	0.06	0.5	0.07
<hr/>					
<b>Fixed effects:</b>	<b>Estimate</b>	<b>Std.Error</b>	<b>z value</b>	<b>Pr(&gt; z )</b>	
(Intercept)	0.837	0.034	24.70	< 2e-16	***
age	0.977	0.001	743.70	< 2e-16	***
age squared	-0.347	0.001	-377.10	< 2e-16	***
wealth (unstandardised)	-0.036	0.005	-7.60	0.00	***
education (unstandardised)	-0.170	0.009	-18.10	< 2e-16	***
womens work (none - reference)	-0.029	0.005	-6.00	0.00	***
womens work (works occasionally)	-0.018	0.002	-9.60	< 2e-16	***
womens work (works seasonally)	-0.008	0.002	-3.50	0.00	***
womens work (works all year)	-0.018	0.003	-5.70	0.00	***
contraceptive use (none - reference)	.	.	.	.	.
contraceptive use (traditional)	0.206	0.003	62.40	< 2e-16	***
contraceptive use (modern)	0.239	0.002	142.10	< 2e-16	***
cluster mortality rate	-0.002	0.001	-2.30	0.02	*
average number of births per cluster	0.208	0.001	224.70	< 2e-16	***
interaction: wealth*education	-0.033	0.001	-37.70	< 2e-16	***
<hr/>					
<b>Model fit statistics</b>	<b>AIC</b>	<b>BIC</b>	<b>logLik</b>	<b>deviance</b>	<b>df residual</b>
	2449894	2450126	-1224927	2449854	802928
<hr/>					
<b>Scaled residuals:</b>	<b>Min</b>	<b>1Q</b>	<b>Median</b>	<b>3Q</b>	<b>Max</b>
	-3.2433	-0.6397	-0.1875	0.5328	6.8605
<hr/>					

Note: Corr stands for correlation, 1Q represents first quartile, 3Q is the third quartile, logLik represents the log likelihood, df.resid refers to the degrees of freedom for the residuals, Pr(>|z|) represents the *P* value.

**Table S6** Varying slope coefficients from the multilevel varying slopes model using unstandardized variables shown in Table S5 in ESM

Country	Wealth (unstandardised)		Education (unstandardised)	
	Beta coefficient	Standard error	Beta coefficient	Standard error
Benin	-0.02	0.01	-0.19	0.01
Bolivia	-0.01	0.01	-0.21	0.01
Burkina Faso	-0.05	0.01	-0.23	0.01
Burundi	0.01	0.01	-0.18	0.01
Cameroon	-0.02	0.01	-0.16	0.01
Chad	-0.01	0.00	-0.07	0.01
Colombia	-0.07	0.00	-0.19	0.00
Comoros	-0.05	0.01	-0.29	0.01
Congo	-0.02	0.01	-0.13	0.01
DRC	0.00	0.01	-0.10	0.01
Egypt	-0.04	0.01	-0.04	0.00
Ethiopia	-0.05	0.01	-0.27	0.01
Gabon	-0.03	0.01	-0.14	0.01
Ghana	-0.02	0.01	-0.19	0.01
Guinea	-0.03	0.01	-0.18	0.01
Guyana	-0.11	0.01	-0.13	0.01
Haiti	-0.02	0.01	-0.35	0.01
Honduras	-0.05	0.01	-0.20	0.01
India	-0.08	0.00	-0.14	0.00
Indonesia	-0.03	0.00	-0.15	0.00
Jordan	0.03	0.01	-0.11	0.01
Kenya	-0.04	0.00	-0.17	0.00
Lesotho	-0.08	0.01	-0.18	0.02
Liberia	-0.04	0.01	-0.10	0.01
Madagascar	-0.06	0.01	-0.18	0.01
Malawi	-0.04	0.00	-0.10	0.01
Maldives	-0.01	0.01	-0.24	0.01
Mali	-0.04	0.01	-0.11	0.01
Morocco	-0.03	0.01	-0.30	0.01
Mozambique	-0.05	0.01	-0.09	0.01
Namibia	-0.05	0.01	-0.20	0.01
Nepal	-0.10	0.01	-0.15	0.01
Niger	-0.01	0.01	-0.18	0.01
Nigeria	0.02	0.00	-0.15	0.00
Pakistan	-0.02	0.01	-0.09	0.01
Philippines	-0.10	0.01	-0.19	0.01
Rwanda	-0.02	0.01	-0.17	0.01
Sao Tome & Principe	-0.04	0.01	-0.24	0.02
Sierra Leone	-0.04	0.01	-0.16	0.01
Swaziland	-0.06	0.01	-0.17	0.01
Tanzania	-0.06	0.01	-0.14	0.01
Timor-Leste	0.02	0.01	-0.11	0.01
Togo	-0.04	0.01	-0.21	0.01
Zambia	-0.02	0.01	-0.14	0.01
Zimbabwe	-0.03	0.01	-0.19	0.01

**Table S7** Fixed model coefficients from the multilevel varying slopes model of wealth, education, and mediators on alternative outcome: number of living children

**Multilevel Poisson model of number of living children**

**n individuals:** 802948  
**n countries:** 45

<b>Random effects: Groups</b>					
	<b>Name</b>	<b>Variance</b>	<b>SD</b>	<b>Correlation</b>	
country	(Intercept)	0.071	0.27		
	wealth (centered)	0.001	0.04	0.64	
	education (centered)	0.004	0.06	0.38	-0.07
<b>Fixed effects:</b>					
	<b>Estimate</b>	<b>SE</b>	<b>z value</b>	<b>Pr(&gt; z )</b>	
(Intercept)	0.764	0.040	19.30	0.00	***
age	0.954	0.001	692.70	0.00	***
age squared	-0.354	0.001	-362.70	0.00	***
wealth (standardised)	-0.031	0.006	-5.50	0.00	***
education (standardised)	-0.132	0.009	-14.50	0.00	***
womens work (none - reference)	-0.030	0.005	-6.00	0.00	***
womens work (works occasionally)	-0.025	0.002	-12.40	0.00	***
womens work (works seasonally)	-0.015	0.002	-6.30	0.00	***
womens work (works all year)	-0.026	0.003	-7.40	0.00	***
contraceptive use (none - reference)	.	.	.	.	.
contraceptive use (traditiona)	0.227	0.003	66.10	0.00	***
contraceptive use (modern)	0.266	0.002	150.00	0.00	***
cluster mortality rate	-0.082	0.001	-82.30	0.00	***
average number of births per cluster	0.214	0.001	217.70	0.00	***
interaction: wealth*education	-0.029	0.001	-36.50	0.00	***
<b>Model fit statistics</b>					
	<b>AIC</b>	<b>BIC</b>	<b>logLik</b>	<b>deviance</b>	<b>df residual</b>
	2352500	2352731	-1176230	2352460	802928
<b>Scaled residuals:</b>					
	<b>Min</b>	<b>1Q</b>	<b>Median</b>	<b>3Q</b>	<b>Max</b>
	-2.9681	-0.6239	-0.1868	0.5272	6.8214

Note: Corr stands for correlation, 1Q represents first quartile, 3Q is the third quartile, logLik represents the log likelihood, df.resid refers to the degrees of freedom for the residuals, Pr(>|z|) represents the *P* value.

**Table S8** Varying slope coefficients from the multilevel varying slopes model of wealth, education, and mediators on alternative outcome: number of living children

Country	WEALTH		EDUCATION	
	Beta coefficient	Standard error	Beta coefficient	Standard error
Benin	0.00	0.01	-0.16	0.01
Bolivia	-0.03	0.01	-0.19	0.01
Burkina Faso	-0.01	0.01	-0.14	0.01
Burundi	0.02	0.01	-0.13	0.01
Cameroon	-0.02	0.01	-0.13	0.01
Chad	0.02	0.00	-0.04	0.01
Colombia	-0.08	0.00	-0.16	0.00
Comoros	-0.03	0.01	-0.31	0.01
Congo	-0.03	0.01	-0.09	0.01
DRC	0.00	0.01	-0.08	0.01
Egypt	-0.05	0.00	-0.03	0.00
Ethiopia	-0.03	0.01	-0.23	0.01
Gabon	-0.04	0.01	-0.10	0.01
Ghana	-0.02	0.01	-0.17	0.01
Guinea	-0.01	0.01	-0.15	0.01
Guyana	-0.12	0.01	-0.08	0.01
Haiti	-0.02	0.01	-0.29	0.01
Honduras	-0.05	0.01	-0.17	0.01
India	-0.07	0.00	-0.14	0.00
Indonesia	-0.05	0.00	-0.11	0.00
Jordan	0.00	0.01	-0.09	0.01
Kenya	-0.04	0.00	-0.13	0.00
Lesotho	-0.09	0.01	-0.10	0.01
Liberia	-0.02	0.01	-0.06	0.01
Madagascar	-0.05	0.01	-0.13	0.01
Malawi	-0.04	0.01	-0.06	0.00
Maldives	-0.01	0.01	-0.19	0.01
Mali	-0.01	0.01	-0.08	0.01
Morocco	0.00	0.01	-0.28	0.01
Mozambique	-0.04	0.01	-0.06	0.01
Namibia	-0.06	0.01	-0.14	0.01
Nepal	-0.09	0.01	-0.12	0.01
Niger	0.03	0.01	-0.11	0.01
Nigeria	0.03	0.00	-0.15	0.00
Pakistan	0.00	0.01	-0.08	0.01
Philippines	-0.13	0.01	-0.14	0.01
Rwanda	-0.01	0.01	-0.12	0.01
Sao Tome & Principe	-0.02	0.01	-0.13	0.01
Sierra Leone	-0.02	0.01	-0.13	0.01
Swaziland	-0.07	0.01	-0.12	0.01
Tanzania	-0.07	0.01	-0.10	0.01
Timor-Leste	0.02	0.01	-0.12	0.01
Togo	-0.03	0.01	-0.17	0.01
Zambia	-0.02	0.01	-0.10	0.01
Zimbabwe	-0.05	0.01	-0.11	0.01

**Table S9** Fixed model coefficients from the multilevel varying slopes model of wealth, education, and mediators on alternative outcome: number of living children using unstandardized variables

**Multilevel Poisson model of number of living children**

**n individuals:** 802948

**n countries:** 45

<b>Random effects: Groups</b>					
	<b>Name</b>	<b>Variance</b>	<b>SD</b>	<b>Correlation</b>	
country	(Intercept)	0.054	0.23		
	wealth	0.001	0.03	0.440	
	education	0.004	0.06	0.500	0.060
<b>Fixed effects:</b>					
	<b>Estimate</b>	<b>SE</b>	<b>z value</b>	<b>Pr(&gt; z )</b>	
(Intercept)	0.754	0.035	21.80	0.00	***
age	0.954	0.001	692.60	0.00	***
age squared	-0.354	0.001	-362.70	0.00	***
wealth (unstandardised)	-0.033	0.005	-7.00	0.00	***
education (unstandardised)	-0.158	0.009	-17.00	0.00	***
womens work (none - reference)	-0.030	0.005	-6.00	0.00	***
womens work (works occasionally)	-0.025	0.002	-12.40	0.00	***
womens work (works seasonally)	-0.015	0.002	-6.30	0.00	***
womens work (works all year)	-0.025	0.003	-7.30	0.00	***
contraceptive use (none - reference)	.	.	.	.	.
contraceptive use (traditiona)	0.227	0.003	66.10	0.00	***
contraceptive use (modern)	0.266	0.002	150.00	0.00	***
cluster mortality rate	-0.082	0.001	-82.10	0.00	***
average number of births per cluster	0.214	0.001	217.60	0.00	***
interaction: wealth*education	-0.033	0.001	-36.50	0.00	***
<b>Model fit statistics</b>					
	<b>AIC</b>	<b>BIC</b>	<b>logLik</b>	<b>deviance</b>	<b>df residual</b>
	2352482	2352714	-1176221	2352442	802928
<b>Scaled residuals:</b>					
	<b>Min</b>	<b>1Q</b>	<b>Median</b>	<b>3Q</b>	<b>Max</b>
	-2.9636	-0.6238	-0.1867	0.5274	6.831

**Table S10:** Varying slope coefficients from the multilevel varying slopes model of wealth, education, and mediators on alternative outcome: number of living children using unstandardized variables

Country	WEALTH (unstandardised)		EDUCATION (unstandardised)	
	Beta coefficient	Standard error	Beta coefficient	Standard error
Benin	-0.02	0.01	-0.19	0.01
Bolivia	-0.02	0.01	-0.19	0.01
Burkina Faso	-0.04	0.01	-0.21	0.01
Burundi	0.01	0.01	-0.16	0.01
Cameroon	-0.02	0.01	-0.15	0.01
Chad	-0.01	0.01	-0.07	0.01
Colombia	-0.06	0.00	-0.19	0.00
Comoros	-0.04	0.01	-0.29	0.01
Congo	-0.03	0.01	-0.12	0.01
DRC	0.00	0.01	-0.10	0.01
Egypt	-0.04	0.01	-0.03	0.00
Ethiopia	-0.05	0.01	-0.25	0.01
Gabon	-0.03	0.01	-0.14	0.01
Ghana	-0.02	0.01	-0.18	0.01
Guinea	-0.03	0.01	-0.17	0.01
Guyana	-0.10	0.01	-0.13	0.01
Haiti	-0.03	0.01	-0.33	0.01
Honduras	-0.05	0.01	-0.20	0.01
India	-0.07	0.00	-0.13	0.00
Indonesia	-0.03	0.00	-0.13	0.00
Jordan	0.03	0.01	-0.11	0.01
Kenya	-0.03	0.00	-0.16	0.01
Lesotho	-0.08	0.01	-0.17	0.02
Liberia	-0.04	0.01	-0.07	0.01
Madagascar	-0.06	0.01	-0.17	0.01
Malawi	-0.04	0.00	-0.07	0.01
Maldives	-0.01	0.01	-0.22	0.01
Mali	-0.04	0.01	-0.11	0.01
Morocco	-0.02	0.01	-0.29	0.01
Mozambique	-0.05	0.01	-0.08	0.01
Namibia	-0.04	0.01	-0.19	0.01
Nepal	-0.10	0.01	-0.14	0.01
Niger	0.00	0.01	-0.16	0.01
Nigeria	0.03	0.00	-0.14	0.00
Pakistan	-0.01	0.01	-0.08	0.01
Philippines	-0.10	0.01	-0.18	0.01
Rwanda	-0.01	0.01	-0.15	0.01
Sao Tome & Principe	-0.03	0.01	-0.22	0.02
Sierra Leone	-0.04	0.01	-0.14	0.01
Swaziland	-0.06	0.01	-0.16	0.01
Tanzania	-0.06	0.01	-0.13	0.01
Timor-Leste	0.02	0.01	-0.11	0.01
Togo	-0.04	0.01	-0.20	0.01
Zambia	-0.02	0.01	-0.13	0.01
Zimbabwe	-0.03	0.01	-0.17	0.01