

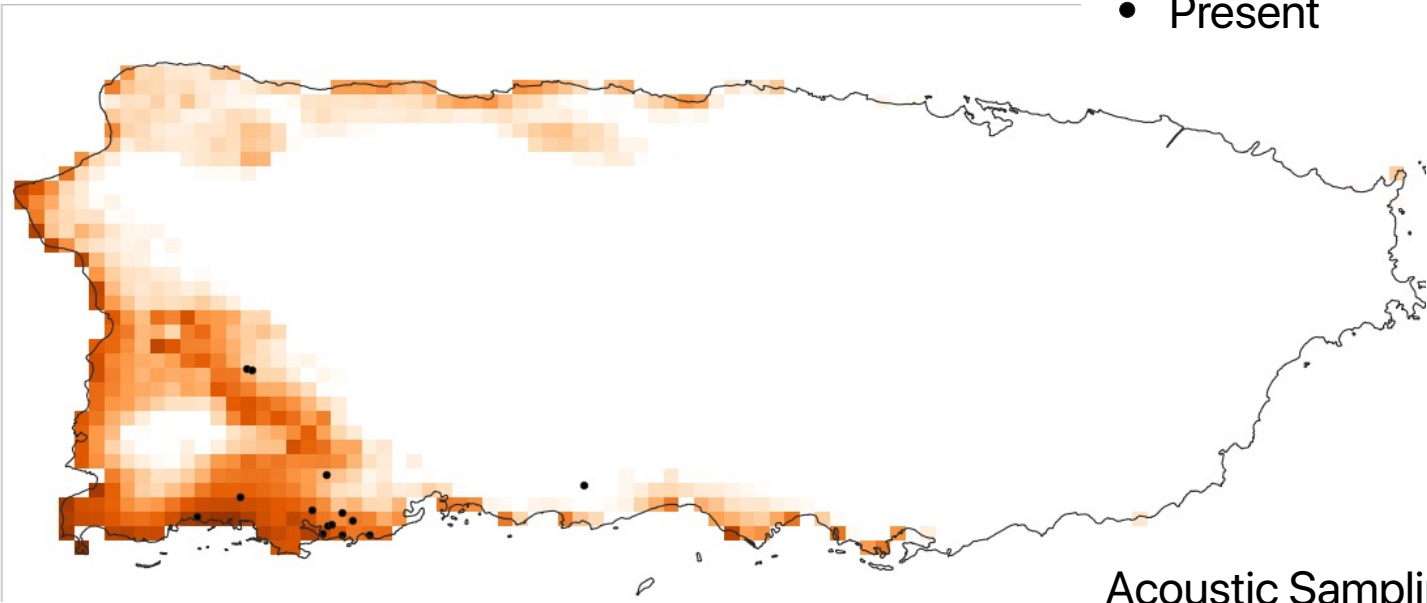
Antrostomus noctitherus

Puerto Rican nightjar

Guabairo

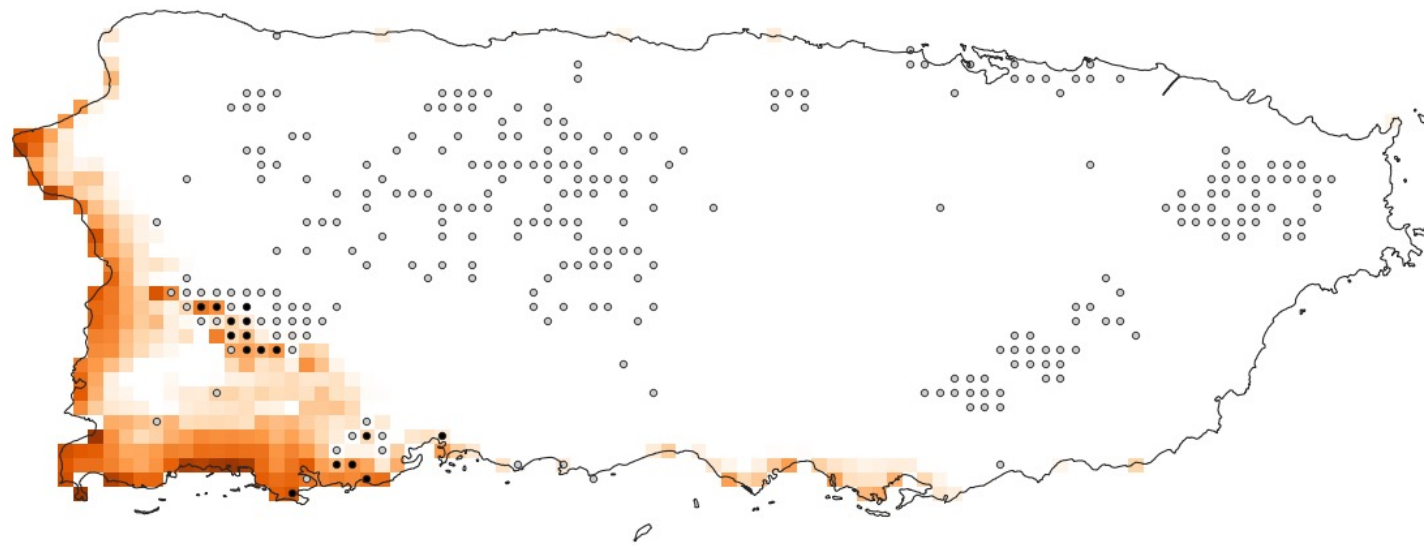
Historical

Historical records
• Present

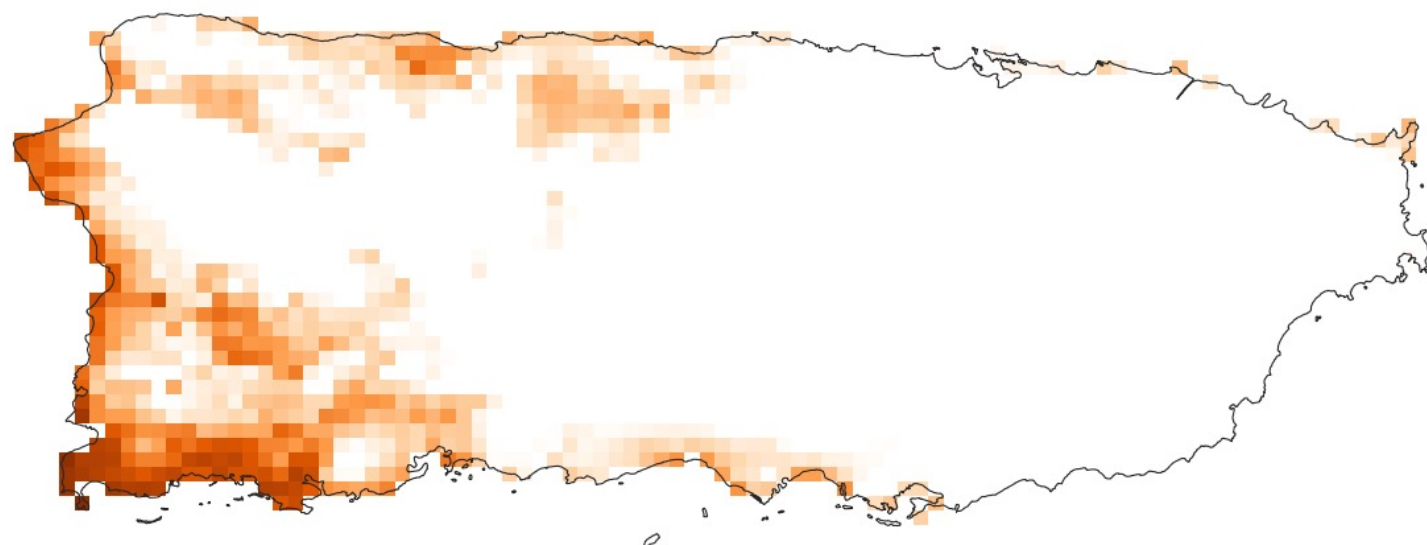


Current

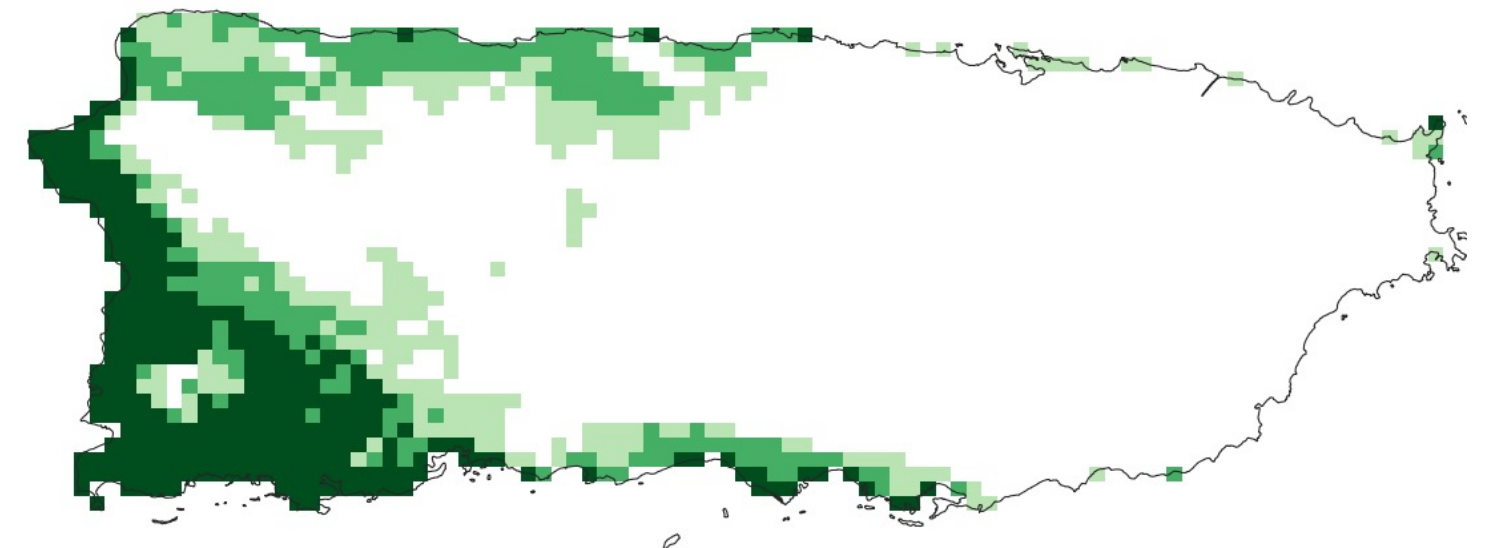
Acoustic Sampling sites
○ Absent
● Present



Future



Habitat suitability



□ Never suitable
□ Suitable in one era
□ Suitable in two eras
□ Always-suitable

Predicted habitat suitability



Buteo platypterus Broad-winged Hawk Guaraguao de Bosque

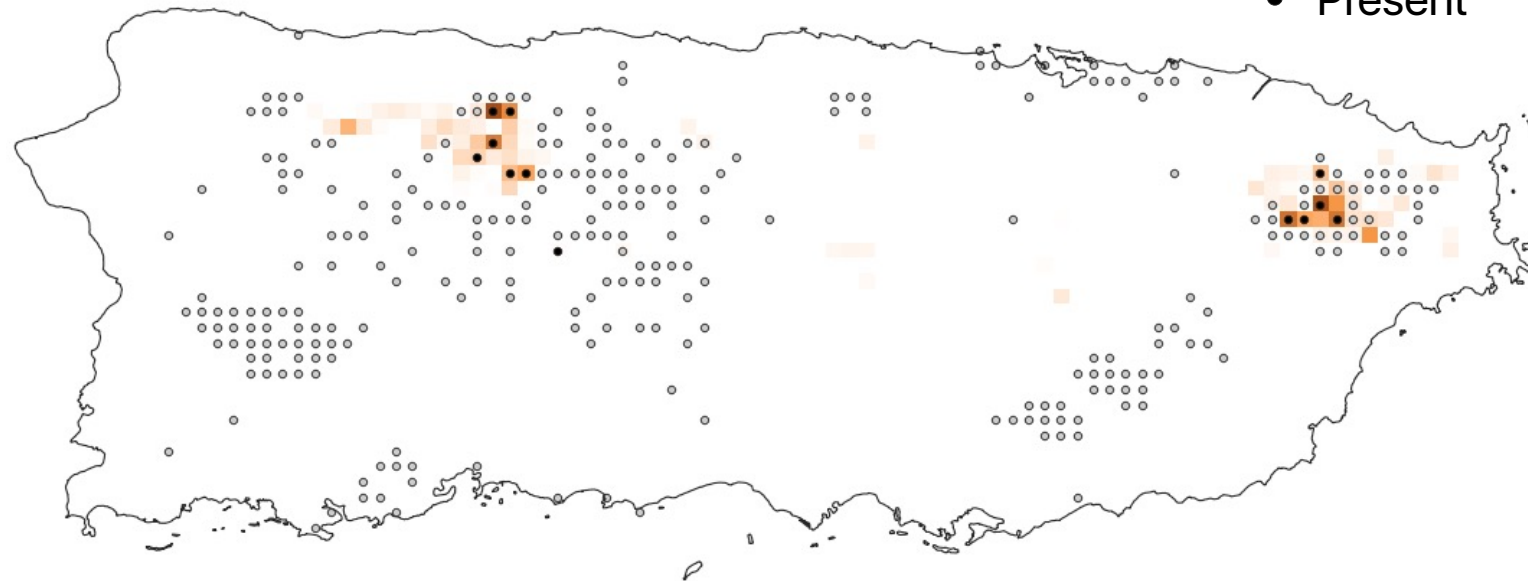
Historical

Historical records
• Present



Current

Acoustic Sampling sites
○ Absent
● Present



Future

Predicted habitat suitability



Habitat suitability



□ Never suitable
□ Suitable in one era
□ Suitable in two eras
□ Always-suitable

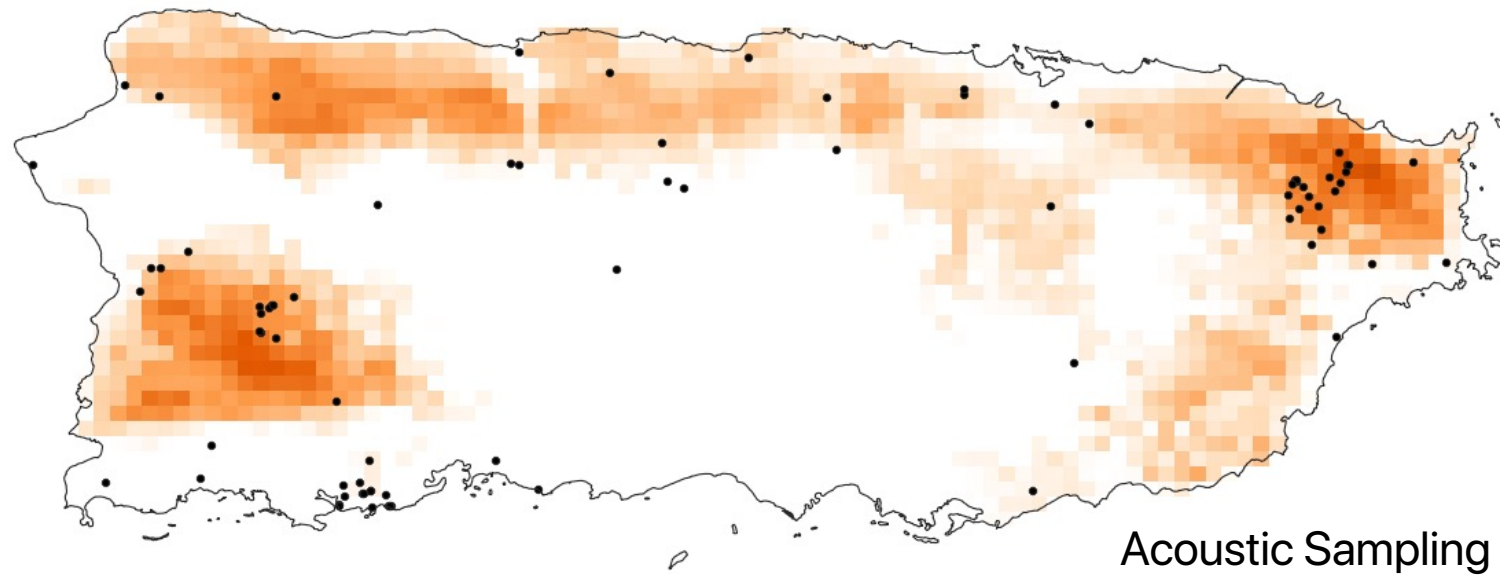
Coccyzus vieilloti

Puerto Rican Lizard-Cuckoo

Pájaro Bobo Mayor

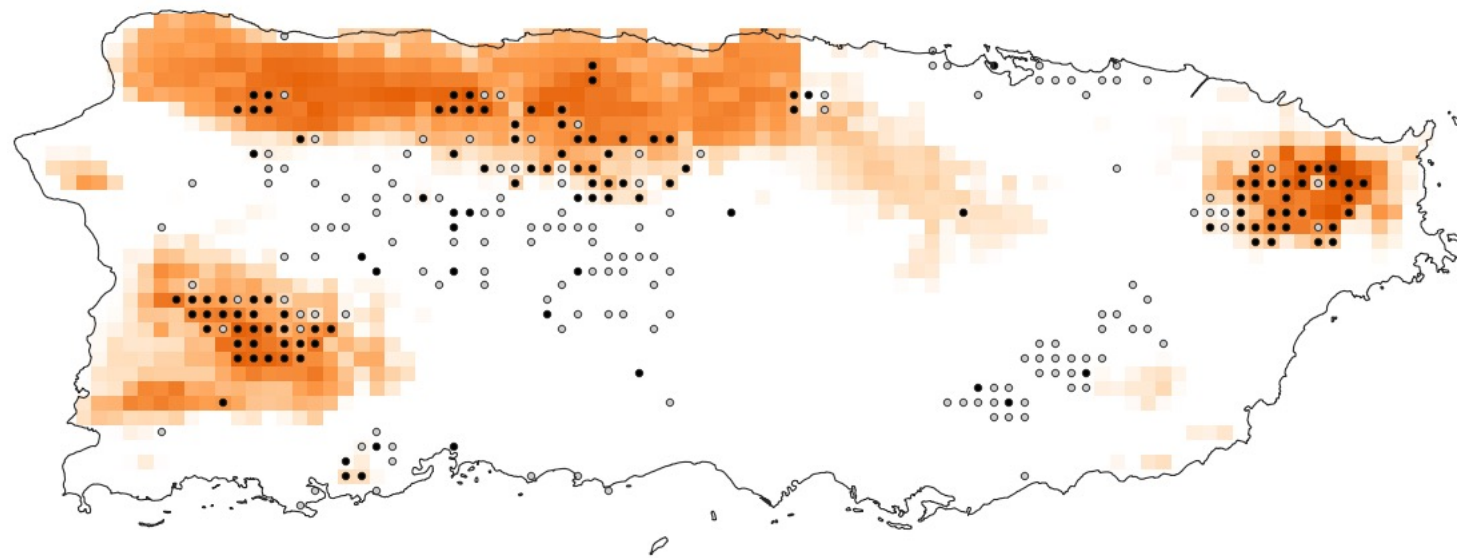
Historical

Historical records
• Present

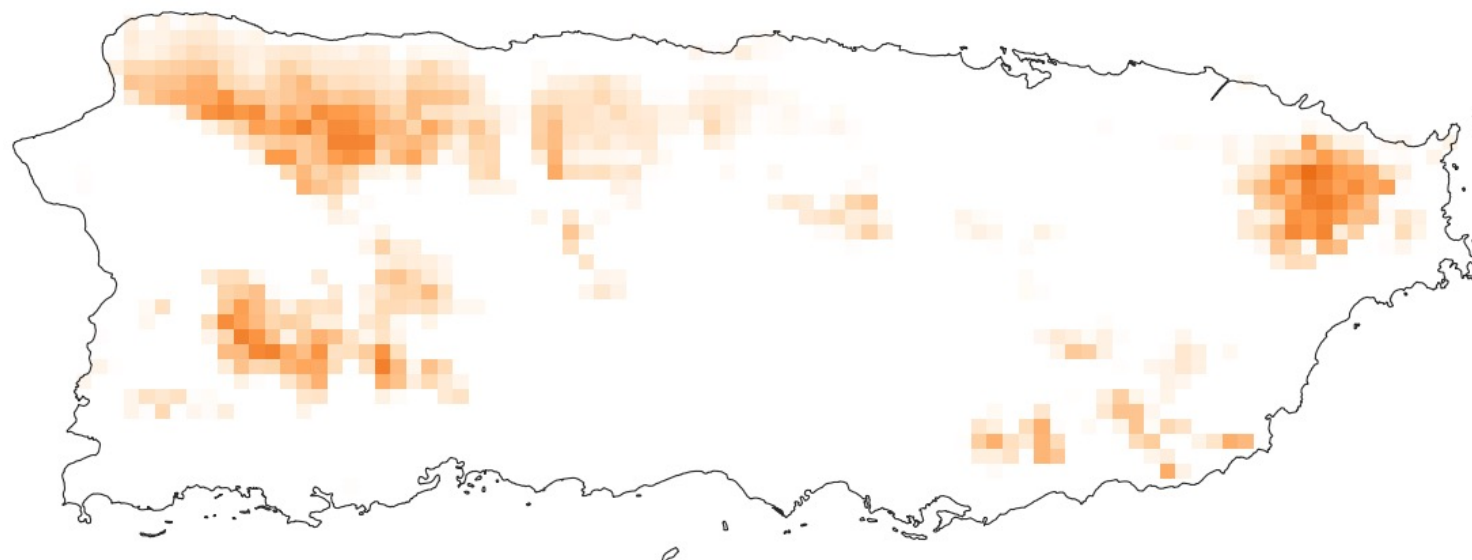


Current

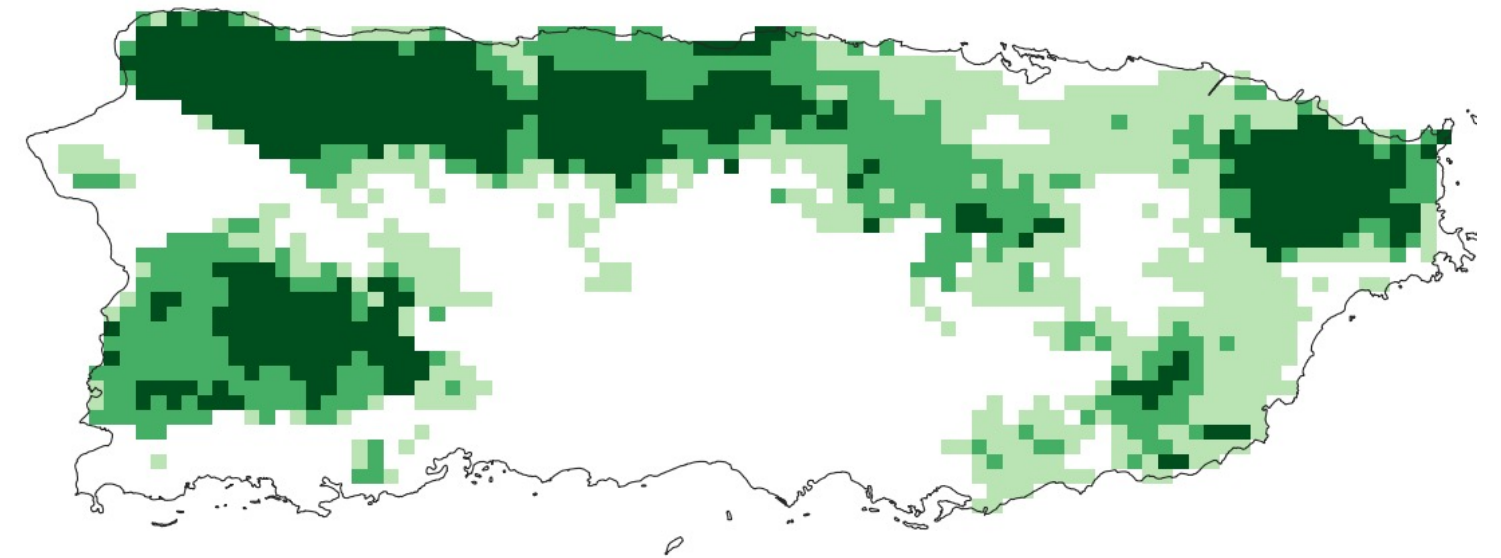
Acoustic Sampling sites
○ Absent
• Present



Future



Habitat suitability



□ Never suitable
□ Suitable in one era
□ Suitable in two eras
■ Always-suitable

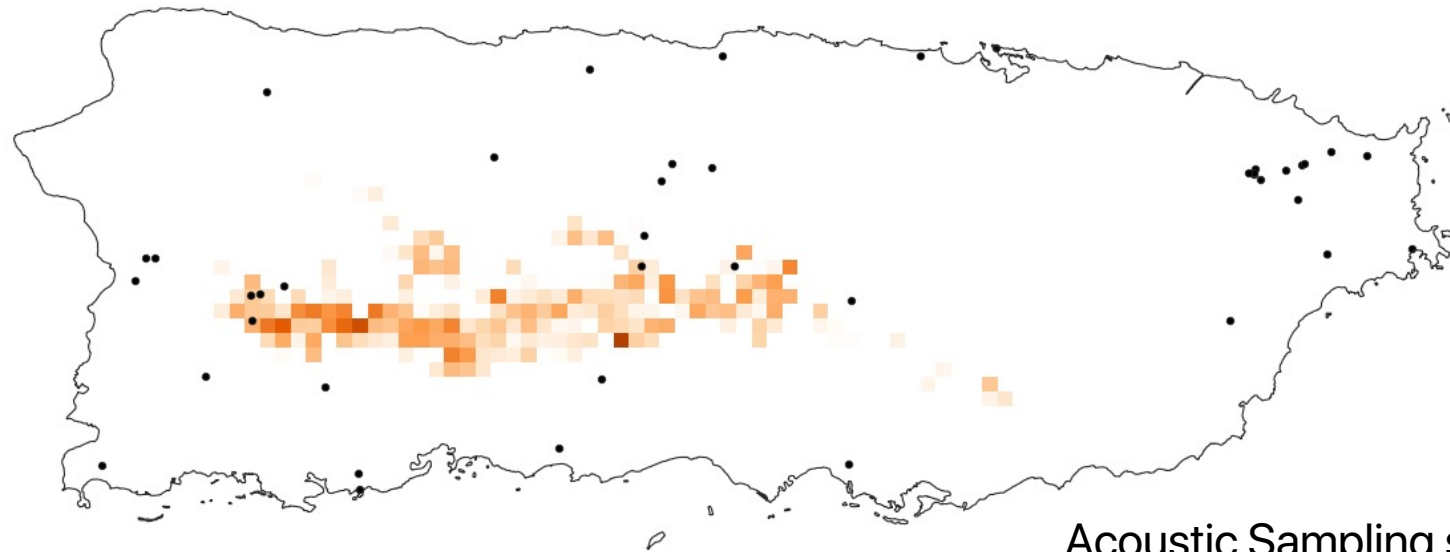
Predicted habitat suitability



Geotrygon montana
Ruddy Quail-Dove
Paloma Perdiz Rojiza

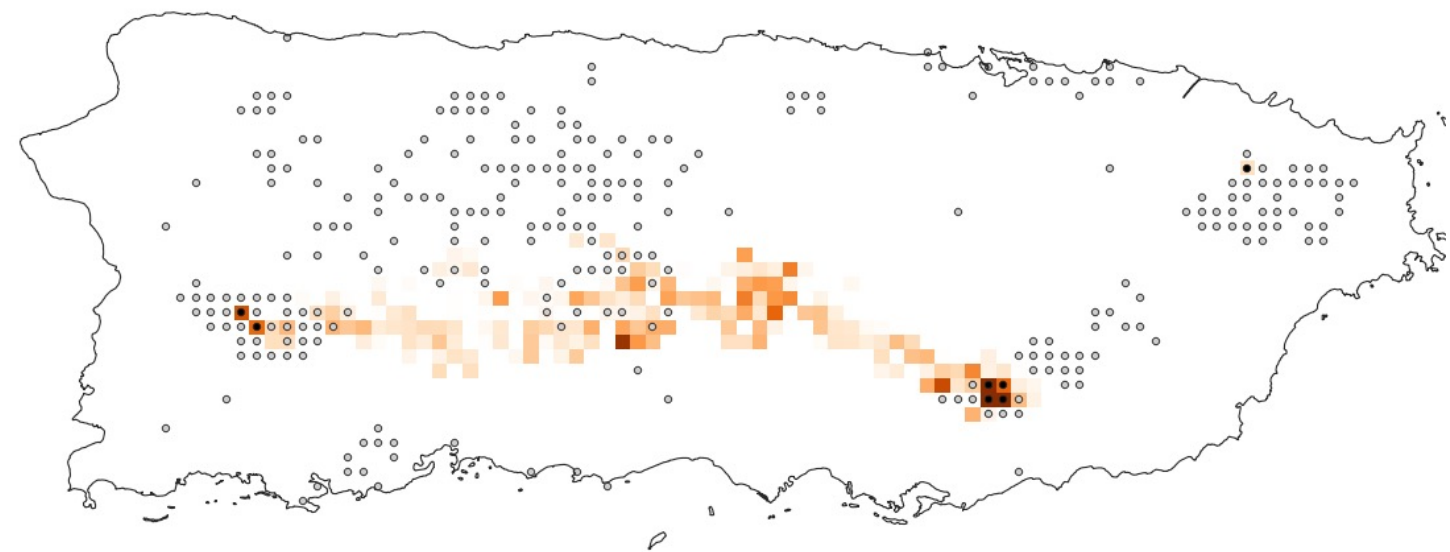
Historical

Historical records
• Present

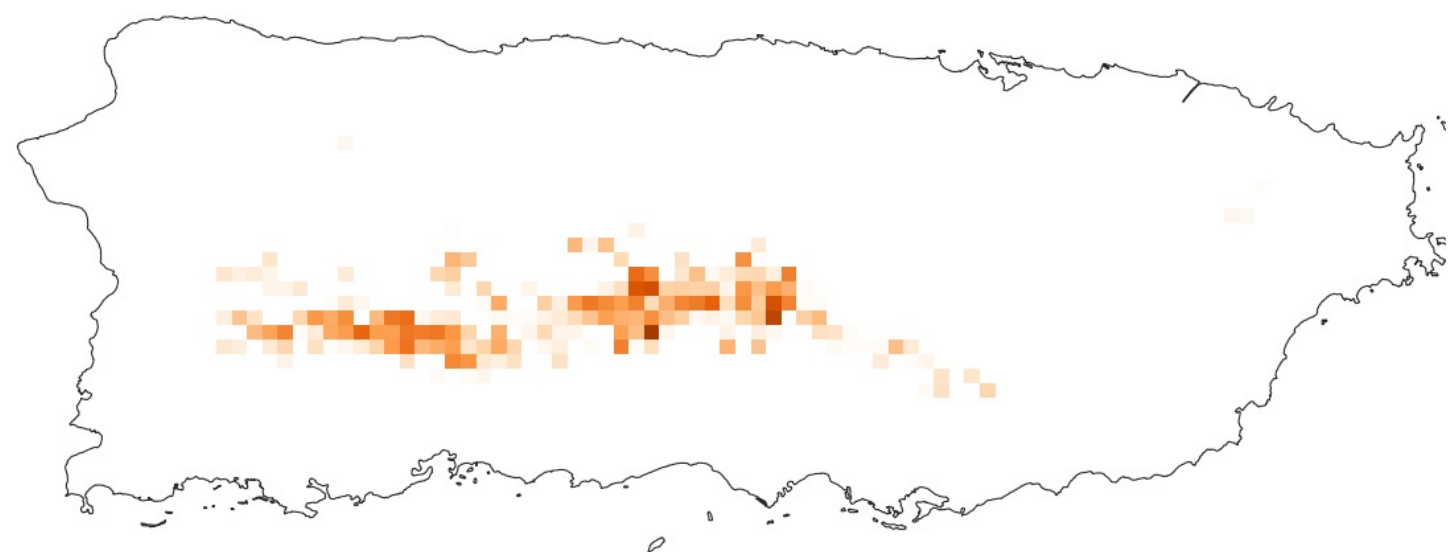


Current

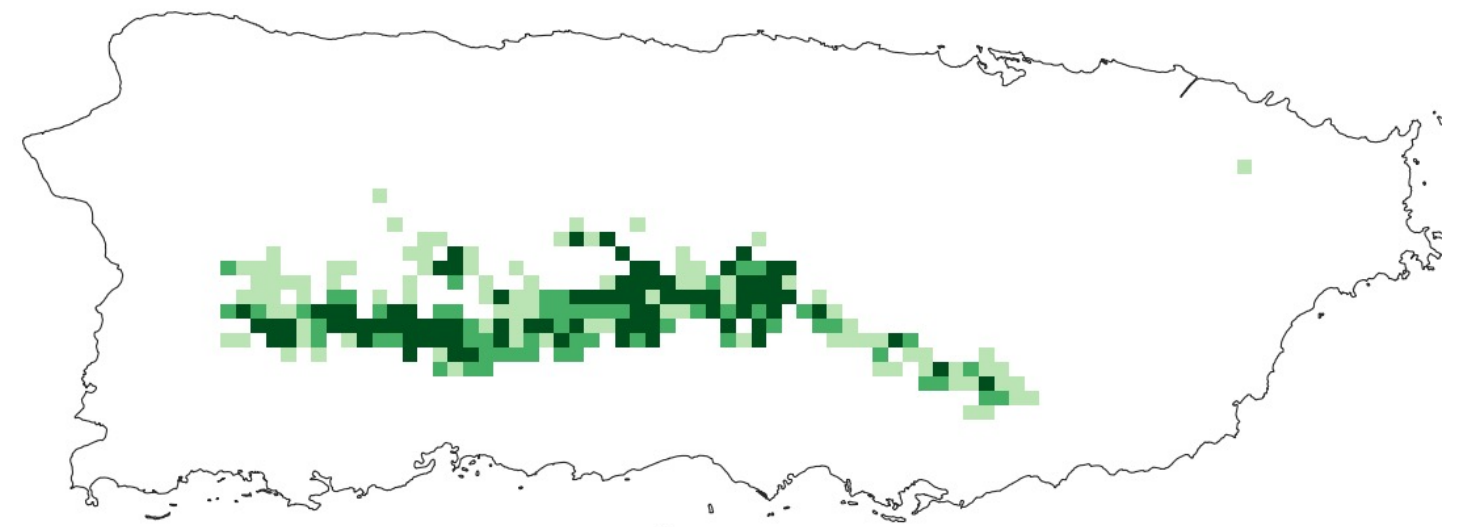
Acoustic Sampling sites
○ Absent
• Present



Future



Habitat suitability



□ Never suitable
□ Suitable in one era
□ Suitable in two eras
□ Always-suitable

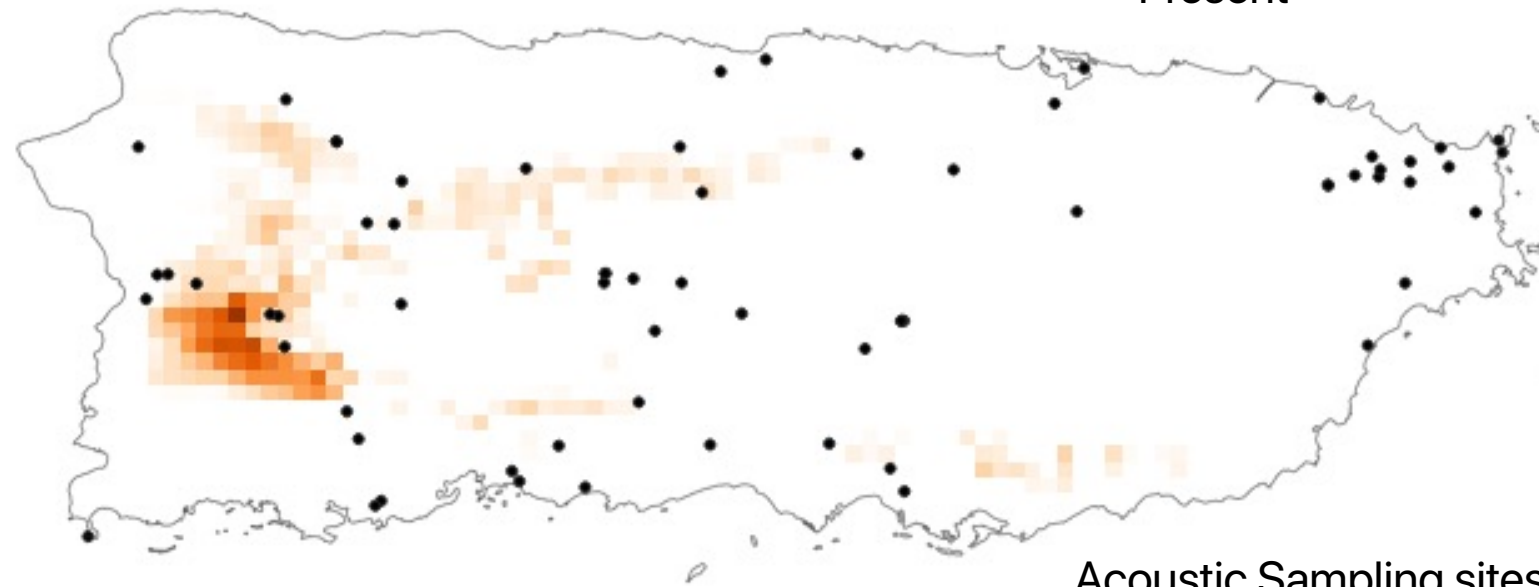
Predicted habitat suitability



Icterus portoricensis Puerto Rican Oriole Calandria

Historical

Historical records
• Present



Current

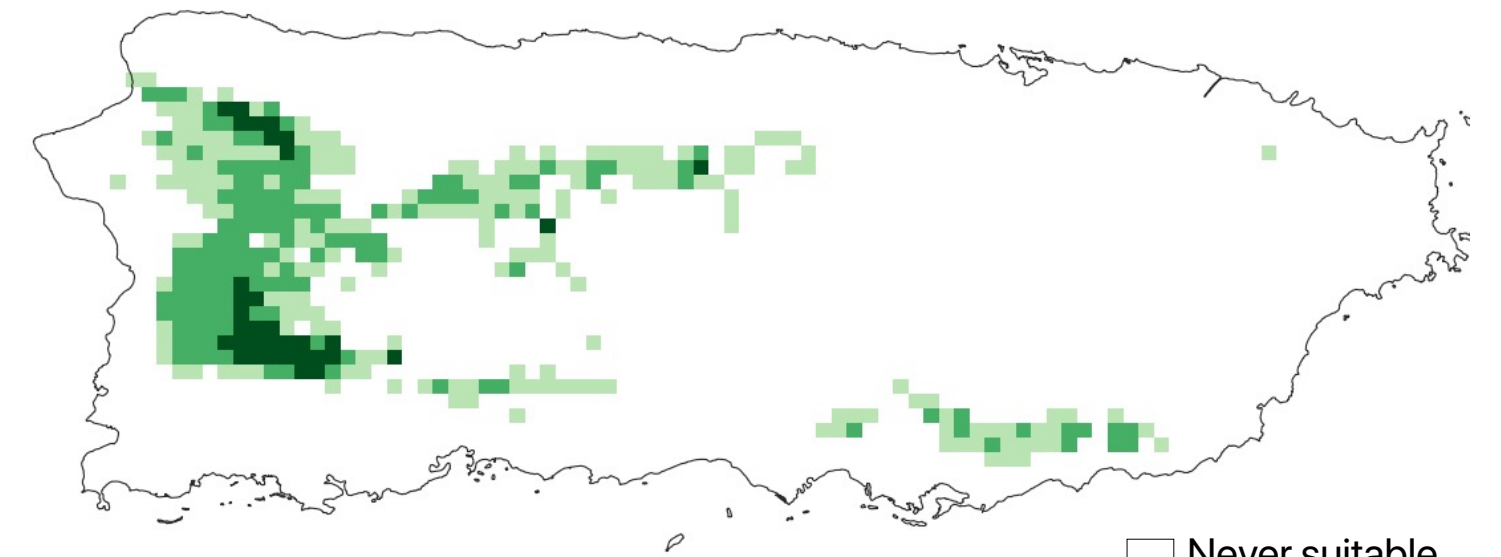
Acoustic Sampling sites
○ Absent
• Present



Future



Habitat suitability



□ Never suitable
■ Suitable in one era
■ Suitable in two eras
■ Always-suitable

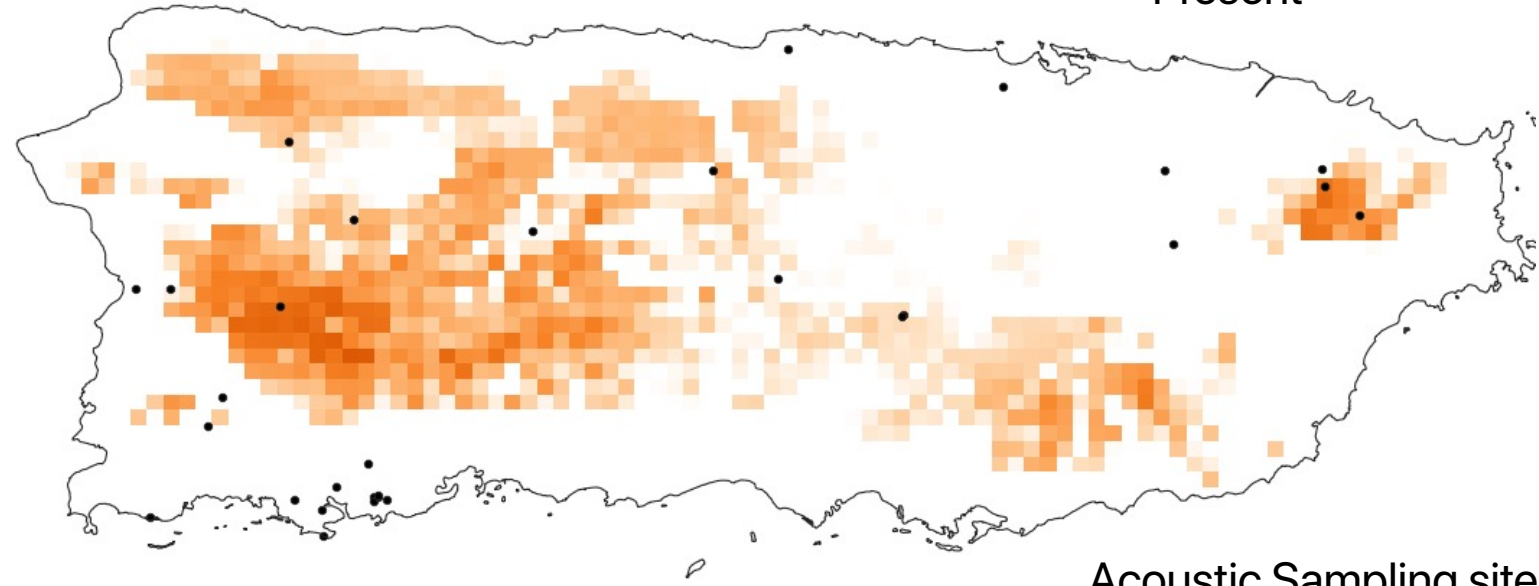
Predicted habitat suitability



Loxigilla portoricensis Puerto Rican Bullfinch Comeñame

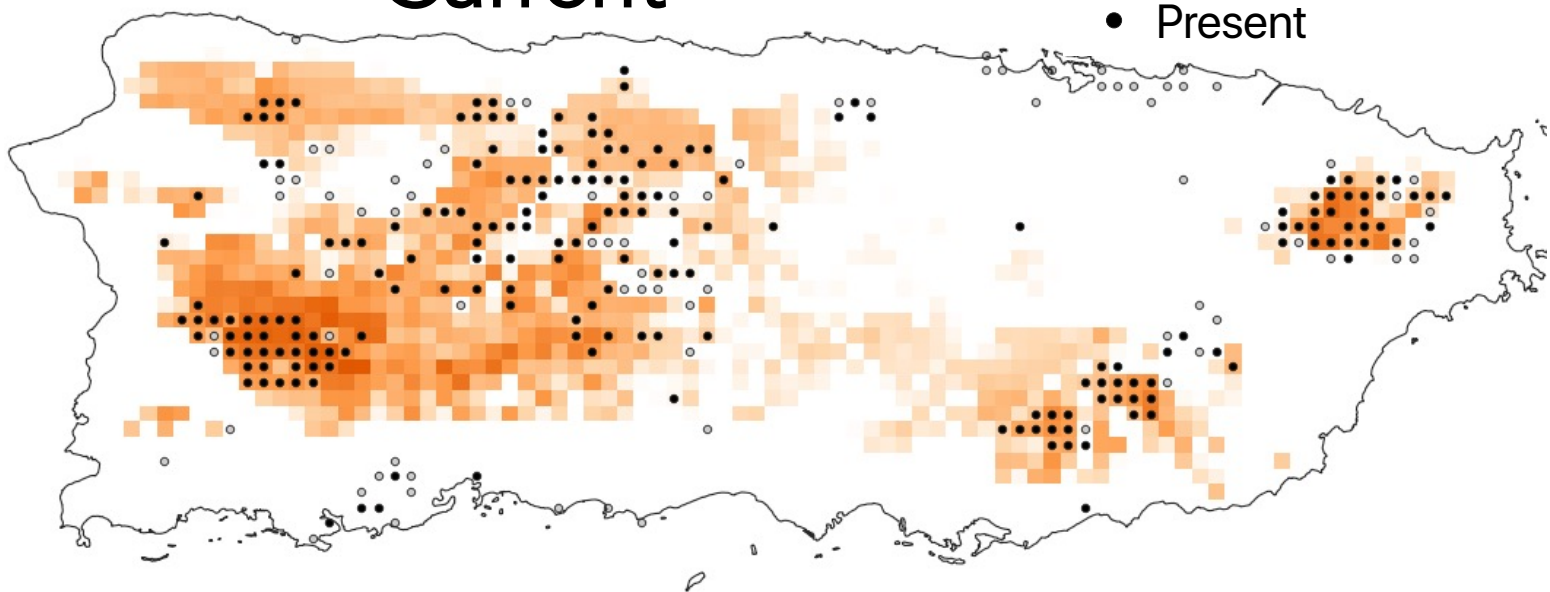
Historical

Historical records
• Present

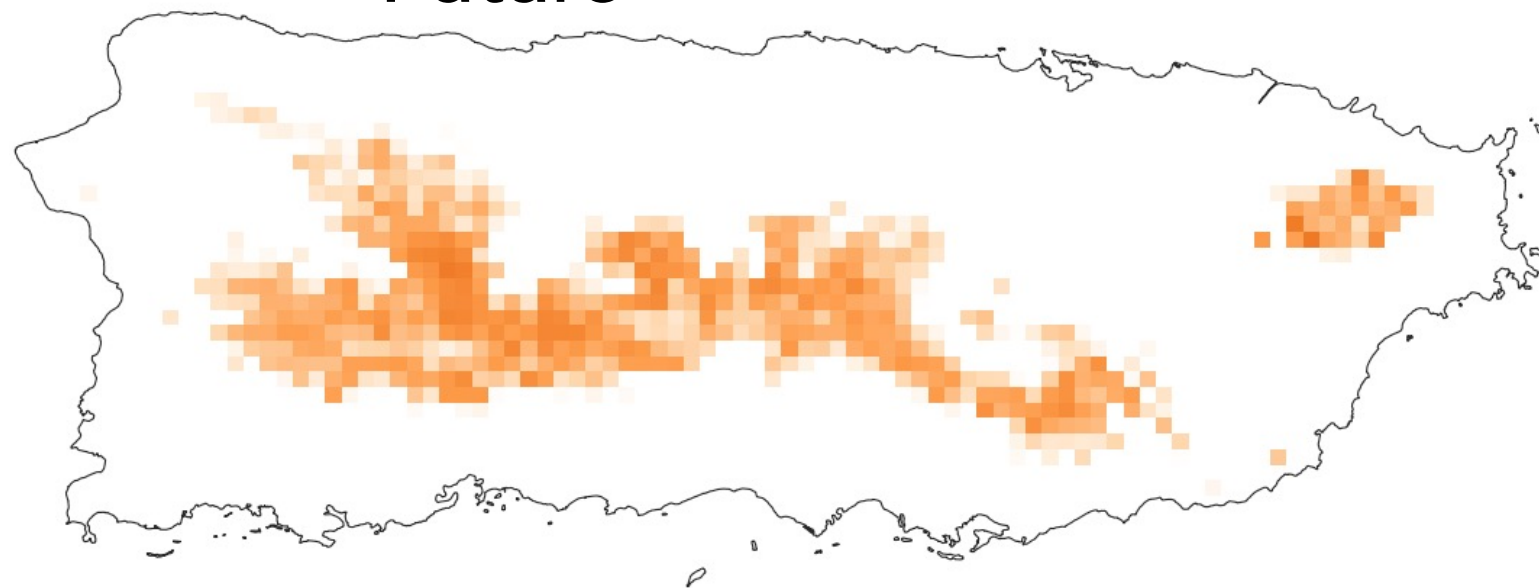


Current

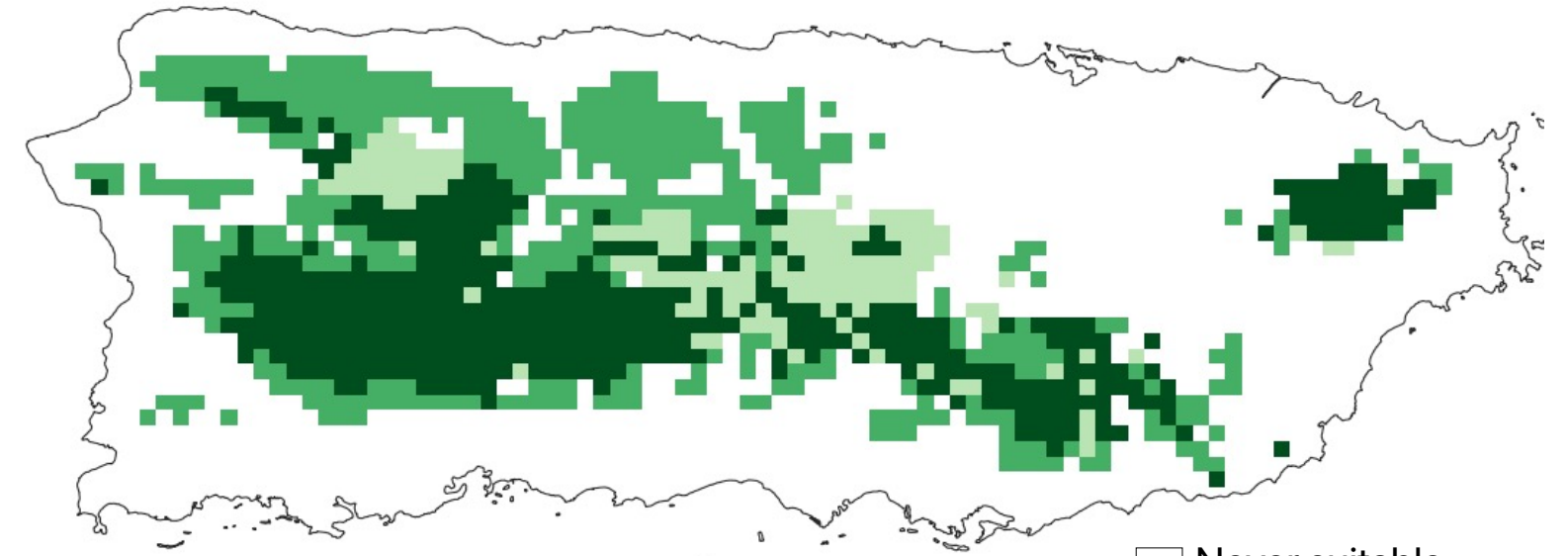
Acoustic Sampling sites
○ Absent
• Present



Future

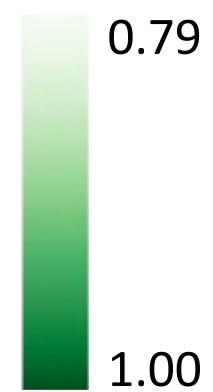


Habitat suitability



□ Never suitable
□ Suitable in one era
□ Suitable in two eras
□ Always-suitable

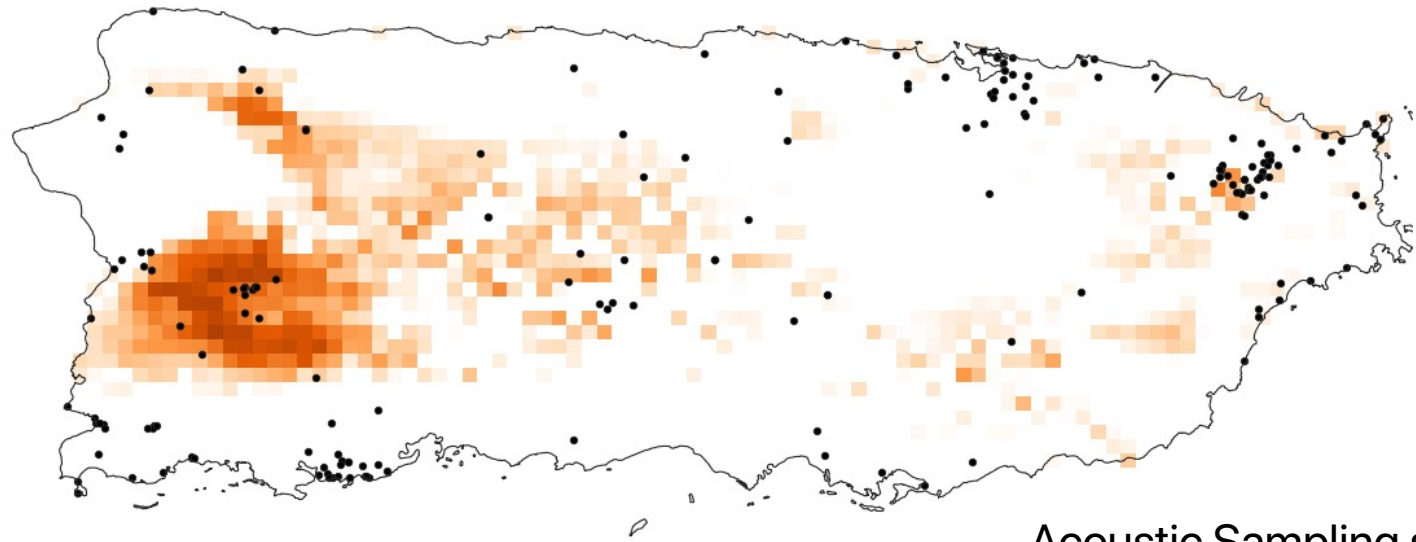
Predicted habitat suitability



Melanerpes portoricensis Puerto Rican Woodpecker Carpintero

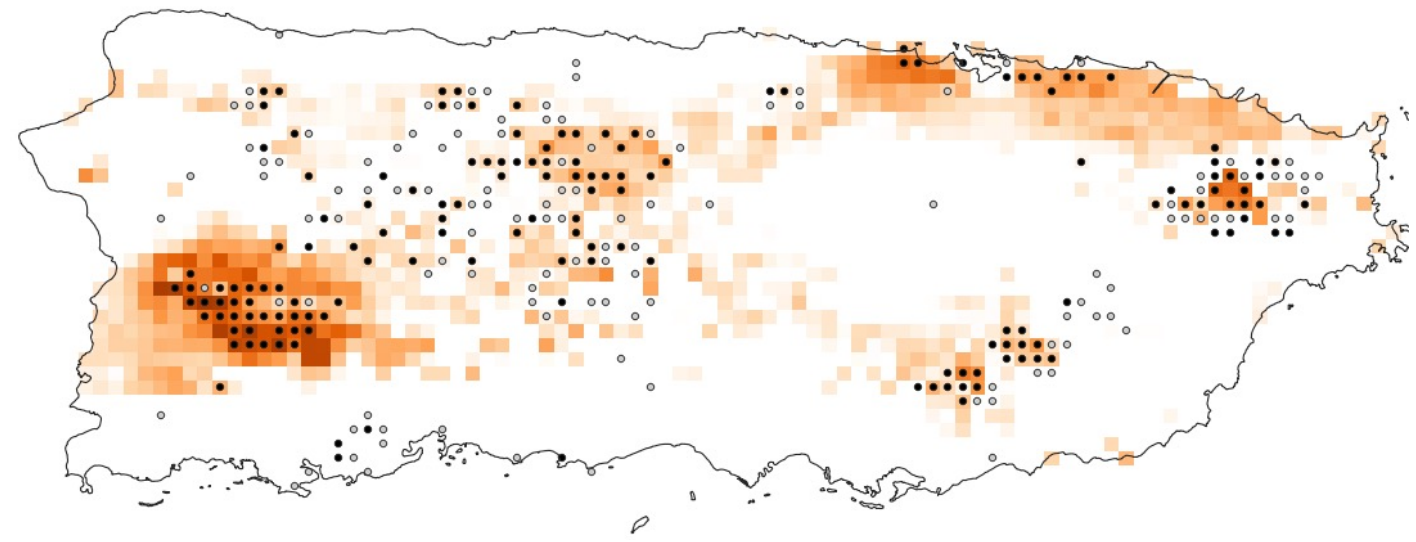
Historical

Historical records
• Present

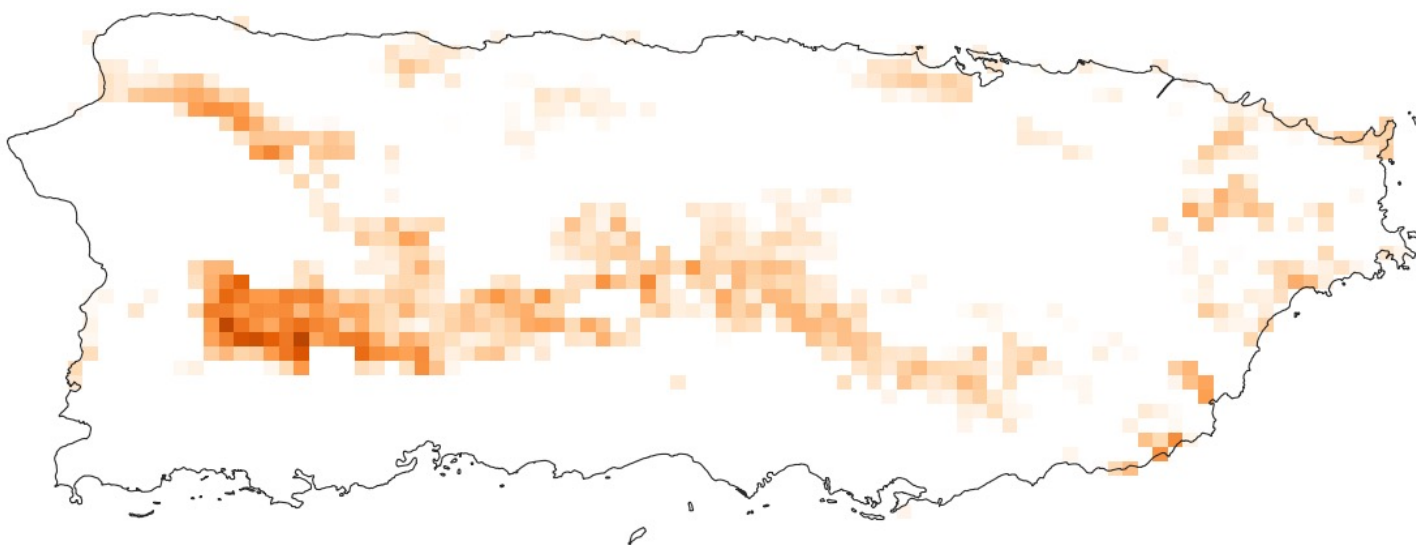


Current

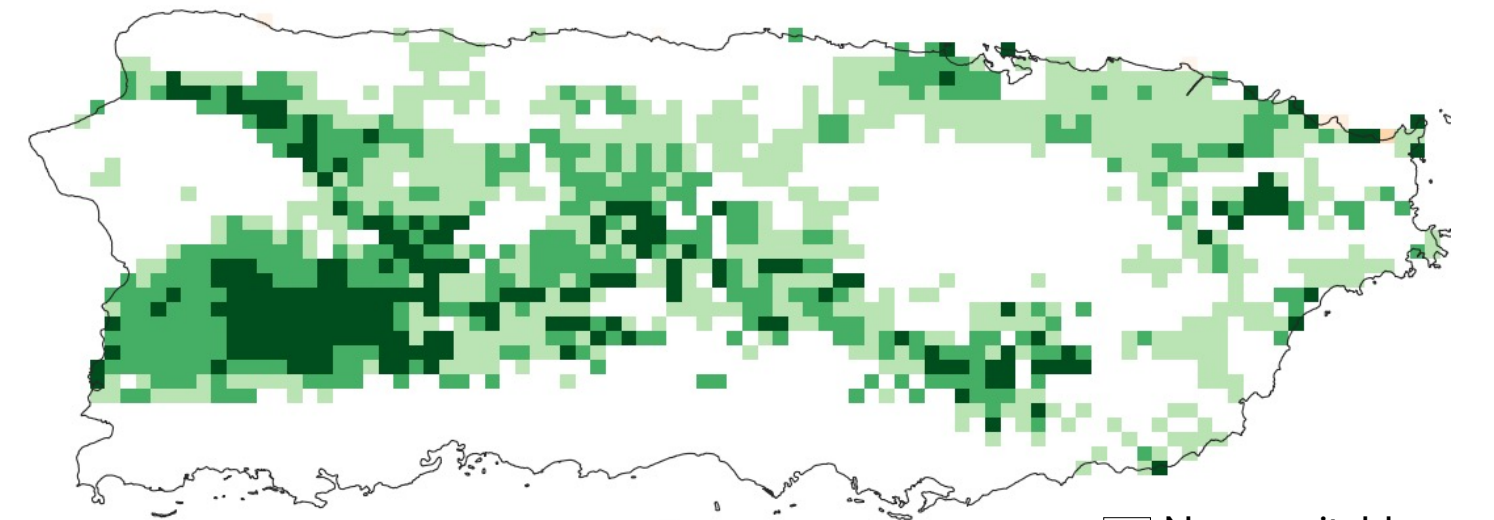
Acoustic Sampling sites
○ Absent
• Present



Future



Habitat suitability



□ Never suitable
□ Suitable in one era
□ Suitable in two eras
■ Always-suitable

Predicted habitat suitability



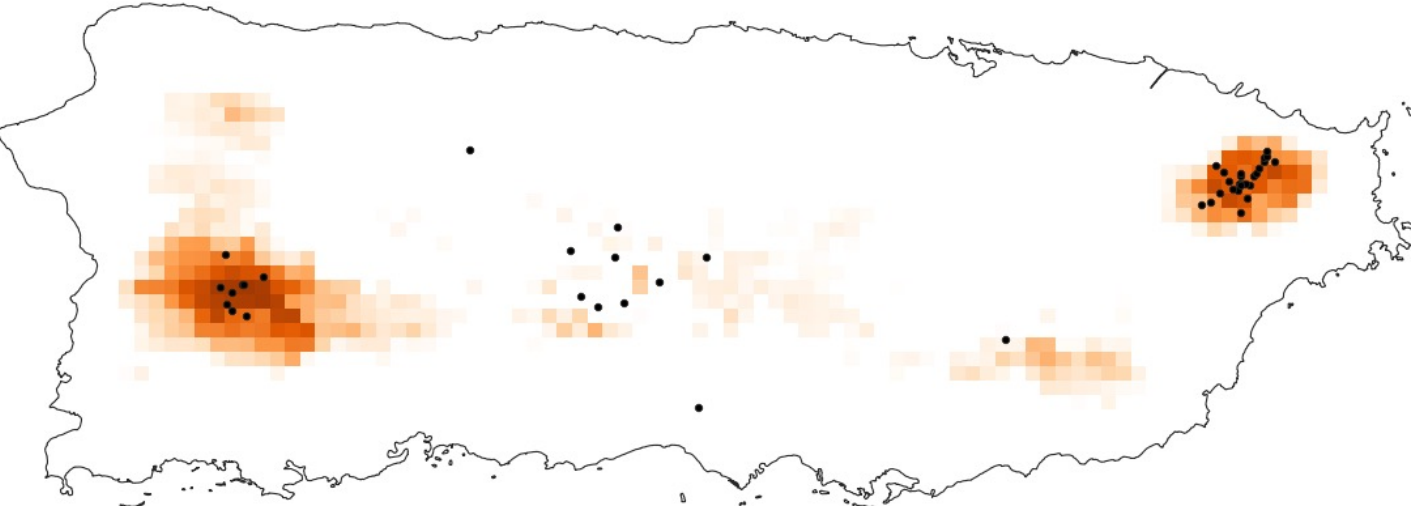
Nesospingus speculariferus

Puerto Rican Tanager

Llorosa

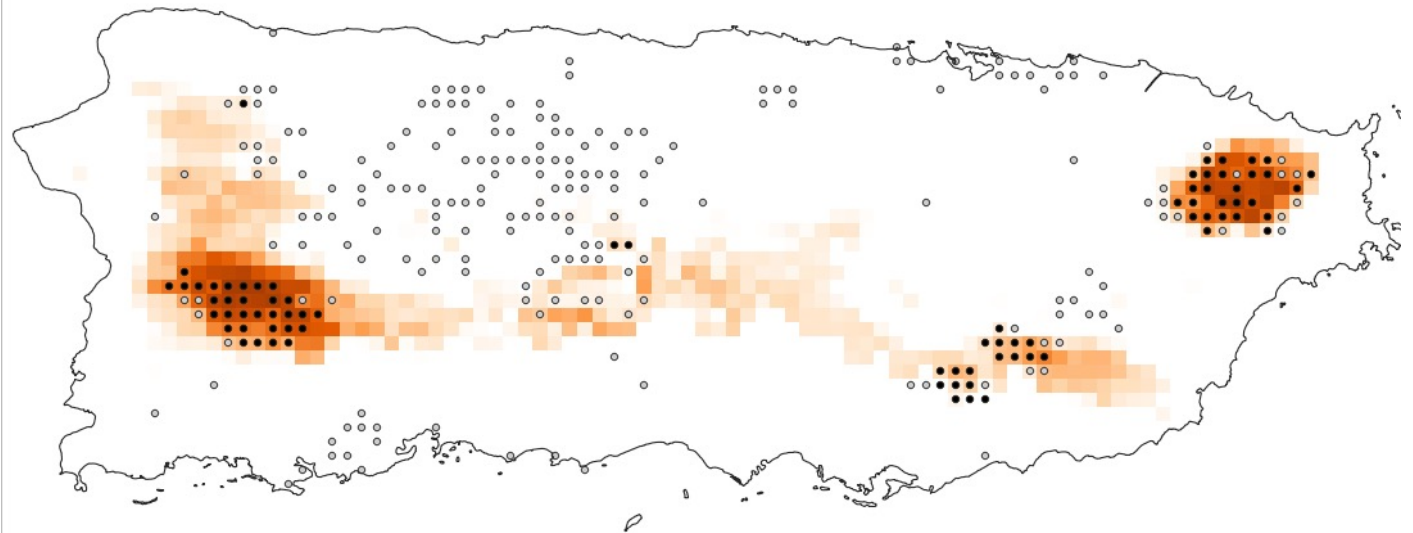
Historical

Historical records
• Present

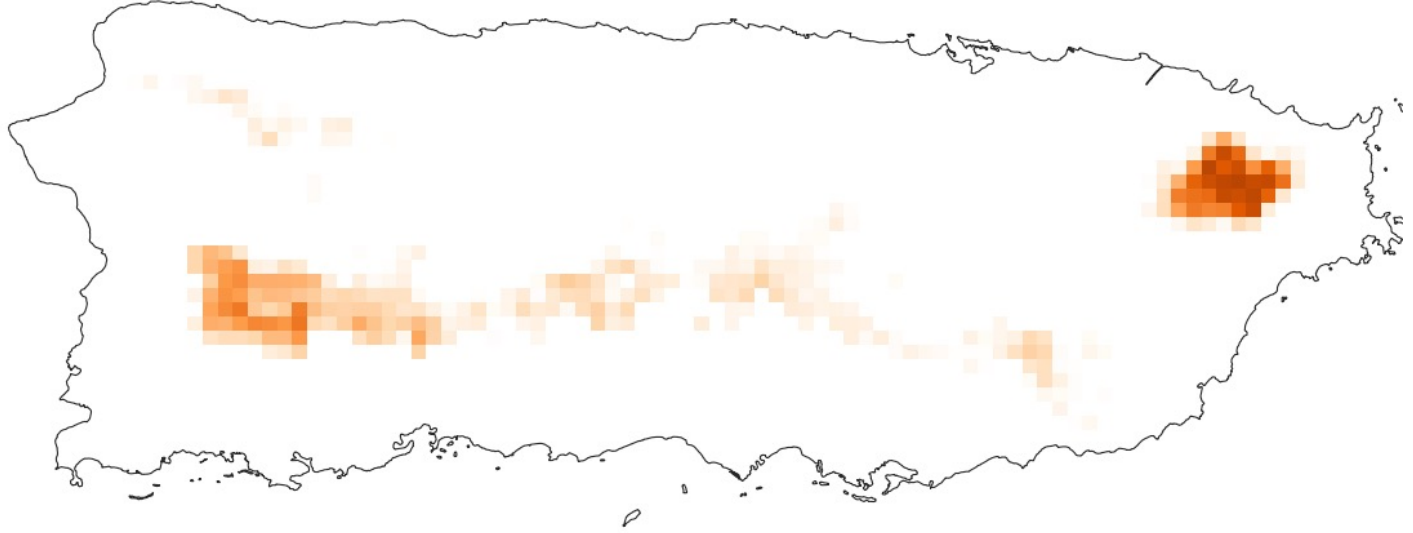


Current

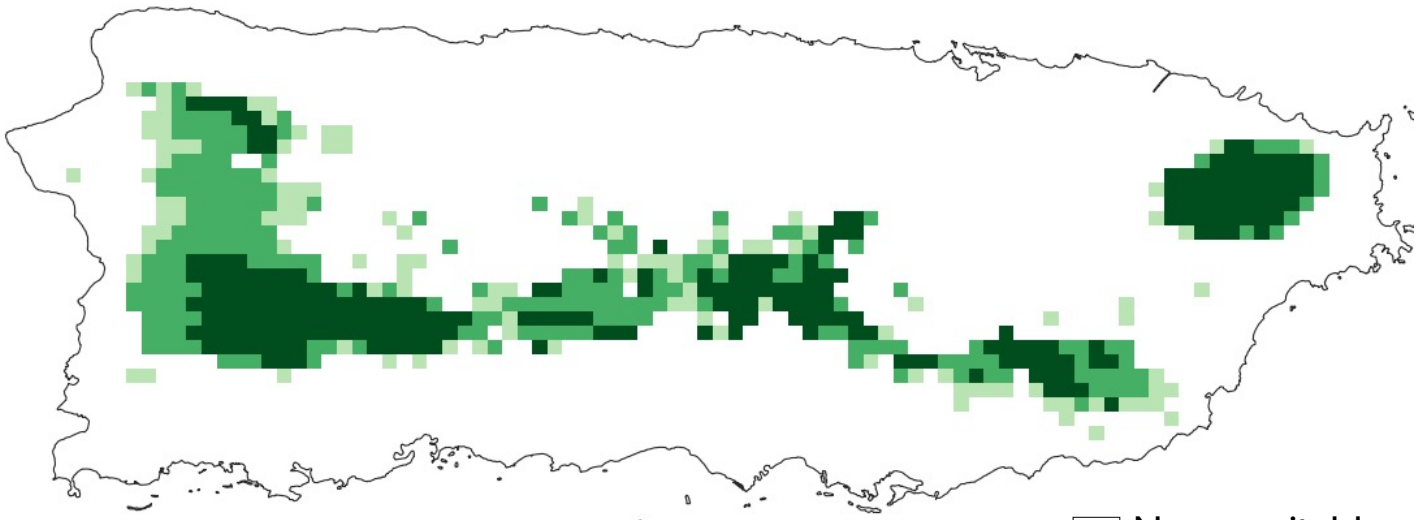
Acoustic Sampling sites
○ Absent
• Present



Future



Habitat suitability



□ Never suitable
□ Suitable in one era
□ Suitable in two eras
□ Always-suitable

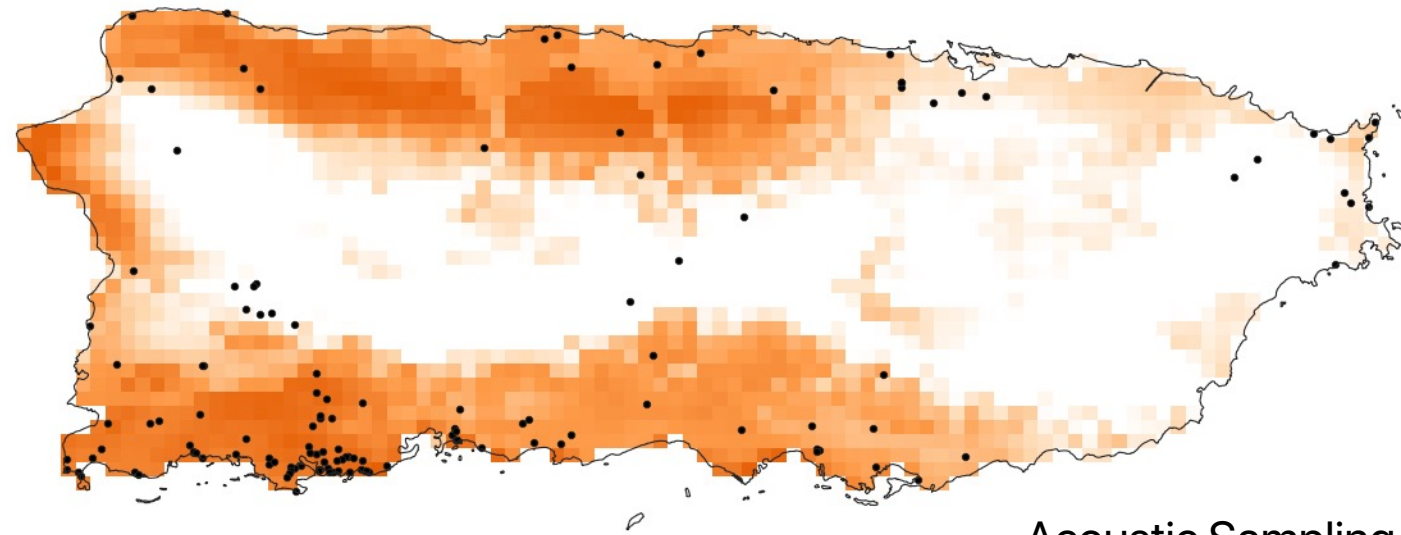
Predicted habitat suitability



Setophaga adelaidae Adelaide's Warbler Reinita Mariposera

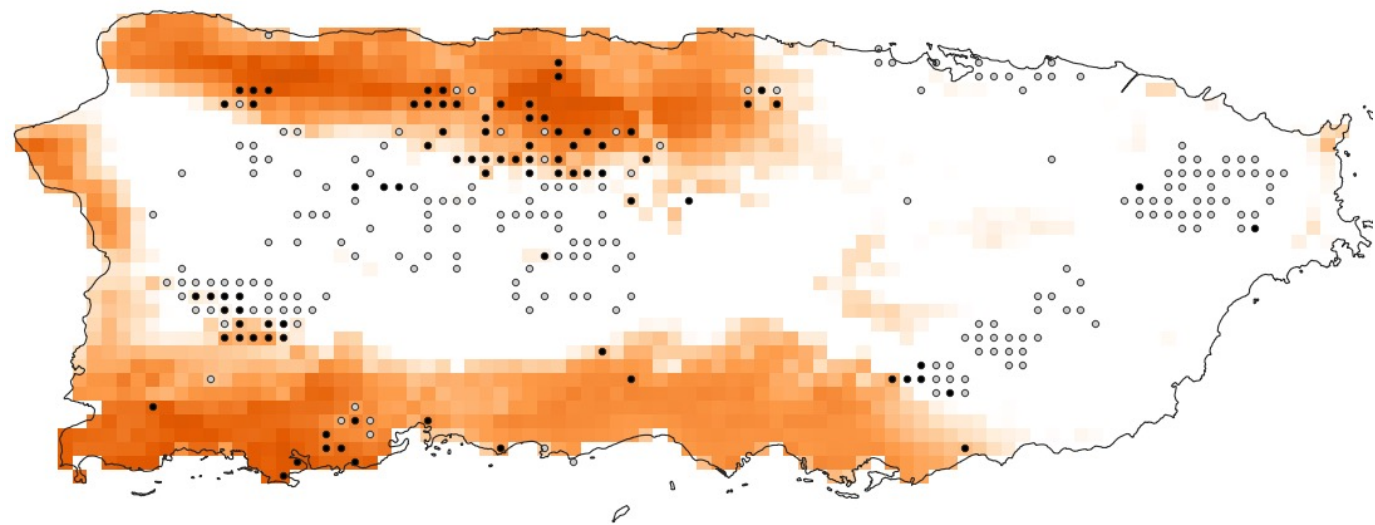
Historical

Historical records
• Present

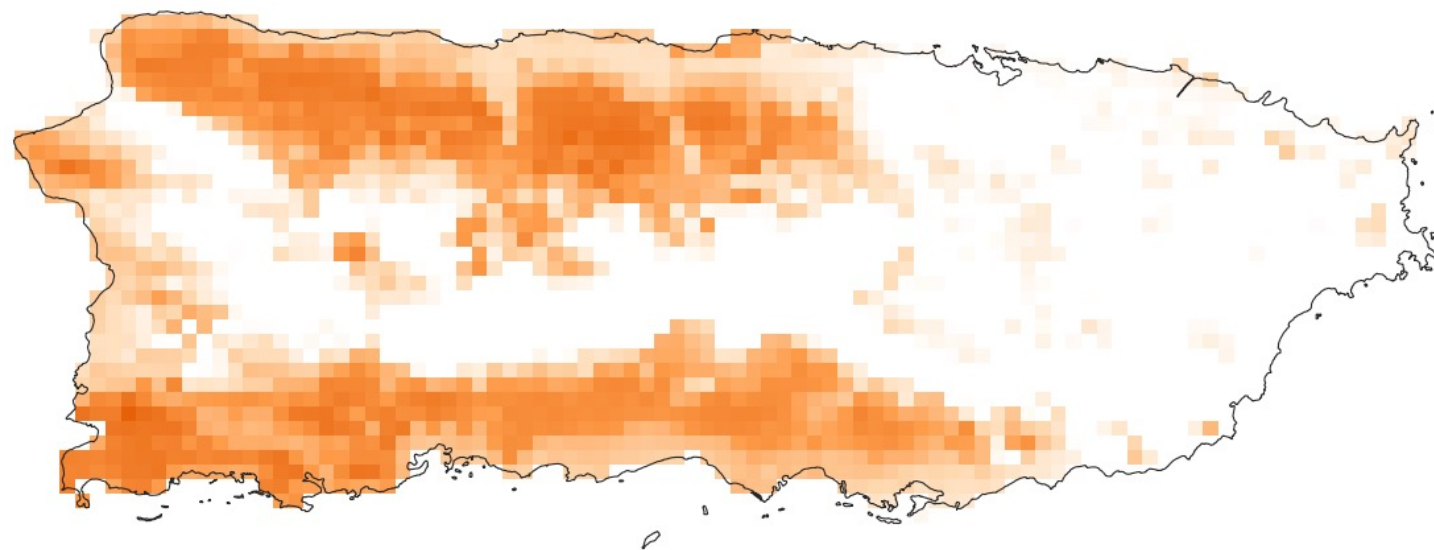


Current

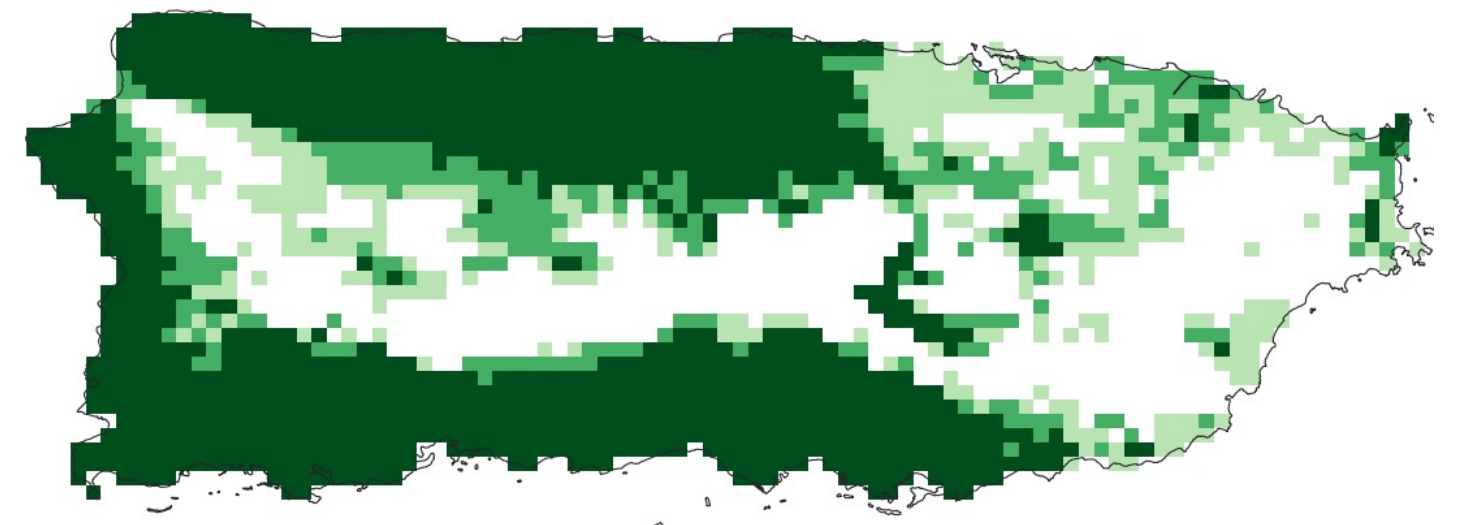
Acoustic Sampling sites
○ Absent
• Present



Future



Habitat suitability



□ Never suitable
□ Suitable in one era
□ Suitable in two eras
□ Always-suitable

Predicted habitat suitability



Setophaga angelae

Elfin Woods Warbler

Reinita del Bosque Enano

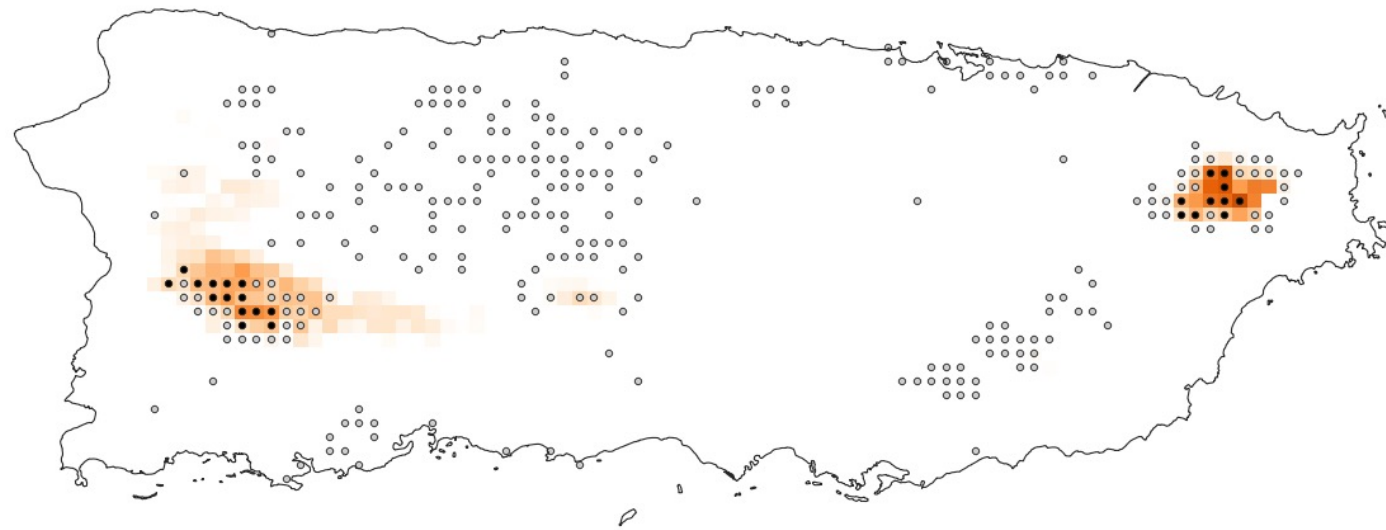
Historical

Historical records
• Present

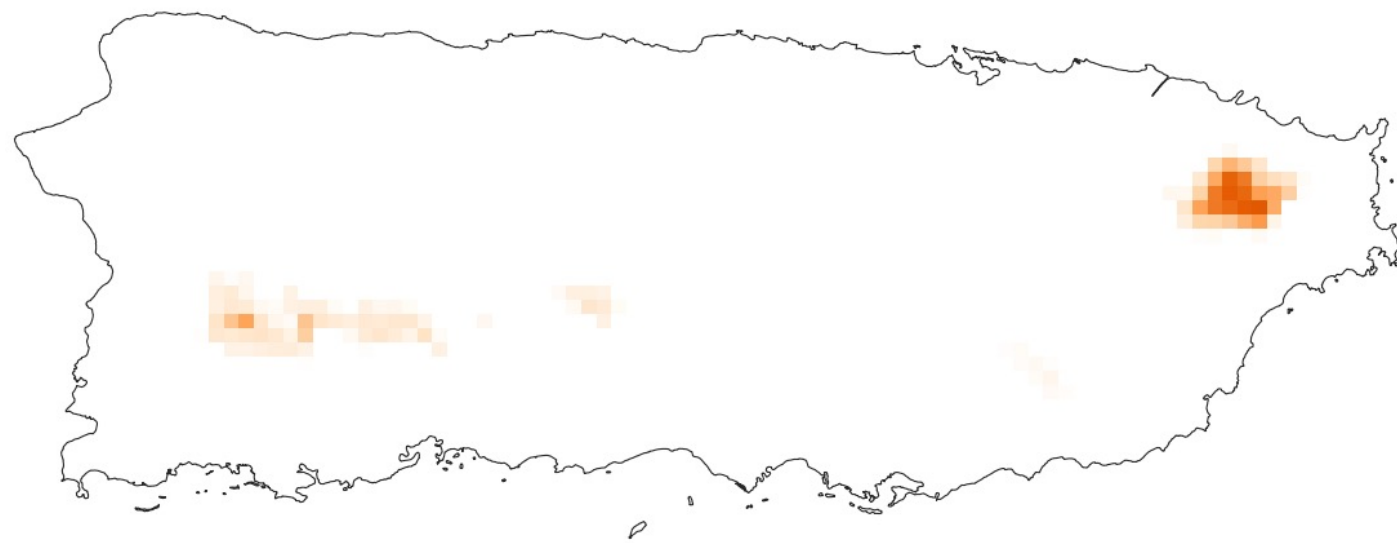


Current

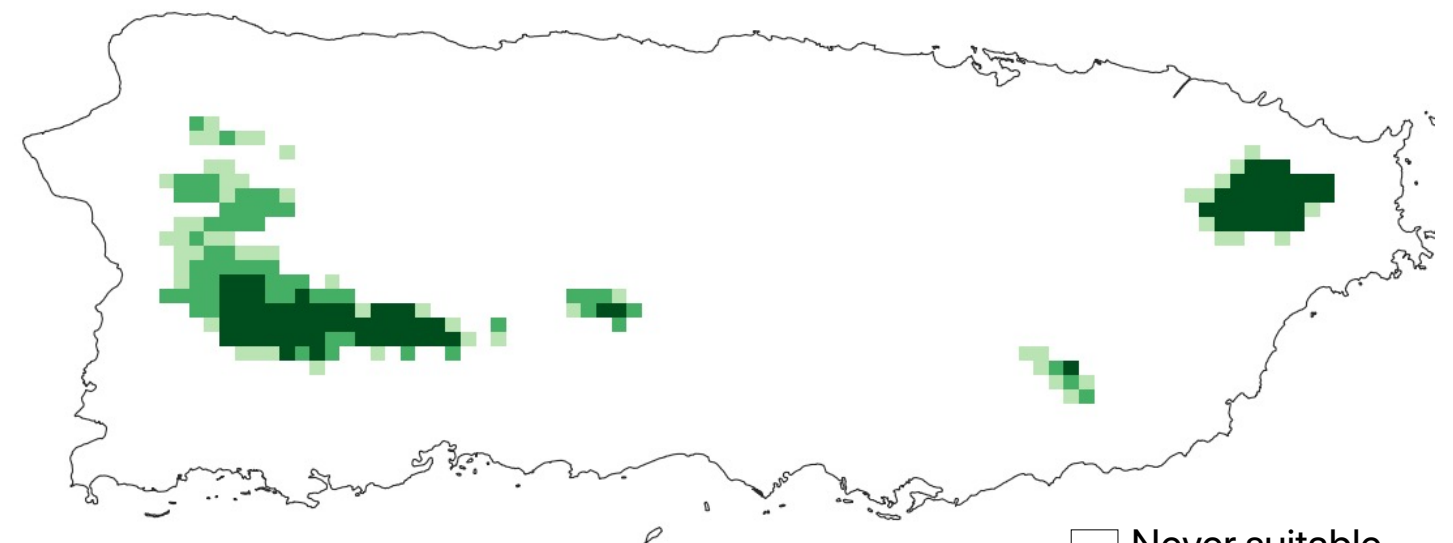
Acoustic Sampling sites
○ Absent
● Present



Future



Habitat suitability



□ Never suitable
□ Suitable in one era
□ Suitable in two eras
■ Always-suitable

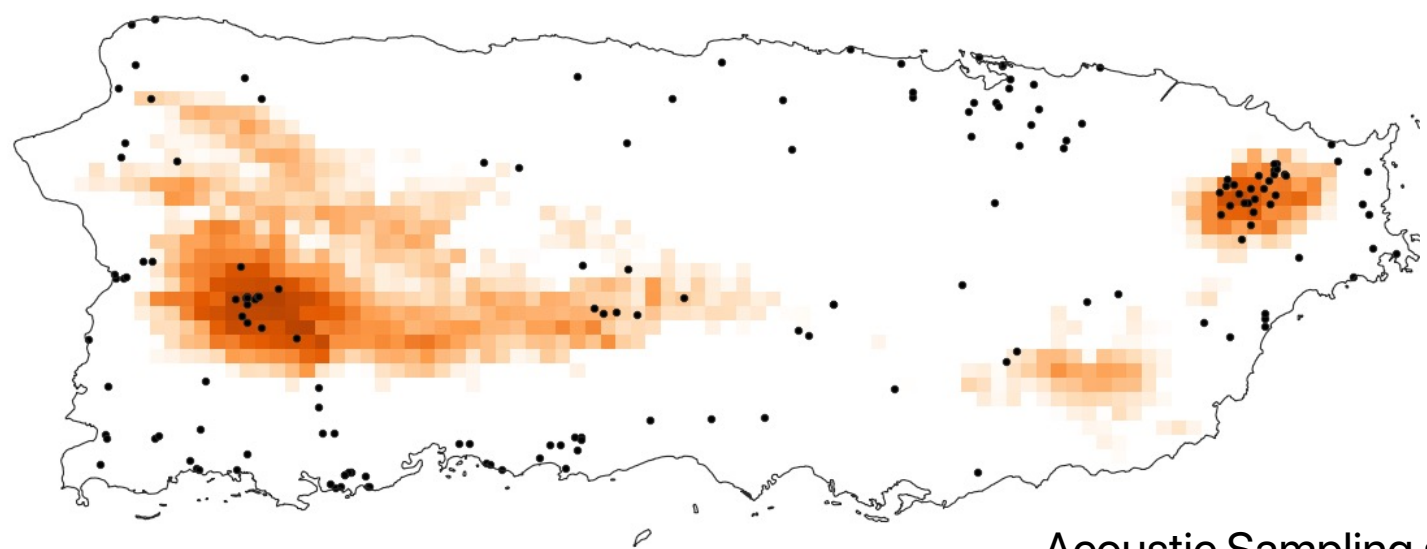
Predicted habitat suitability



Spindalis portoricensis Puerto Rican Spindalis Reina Mora

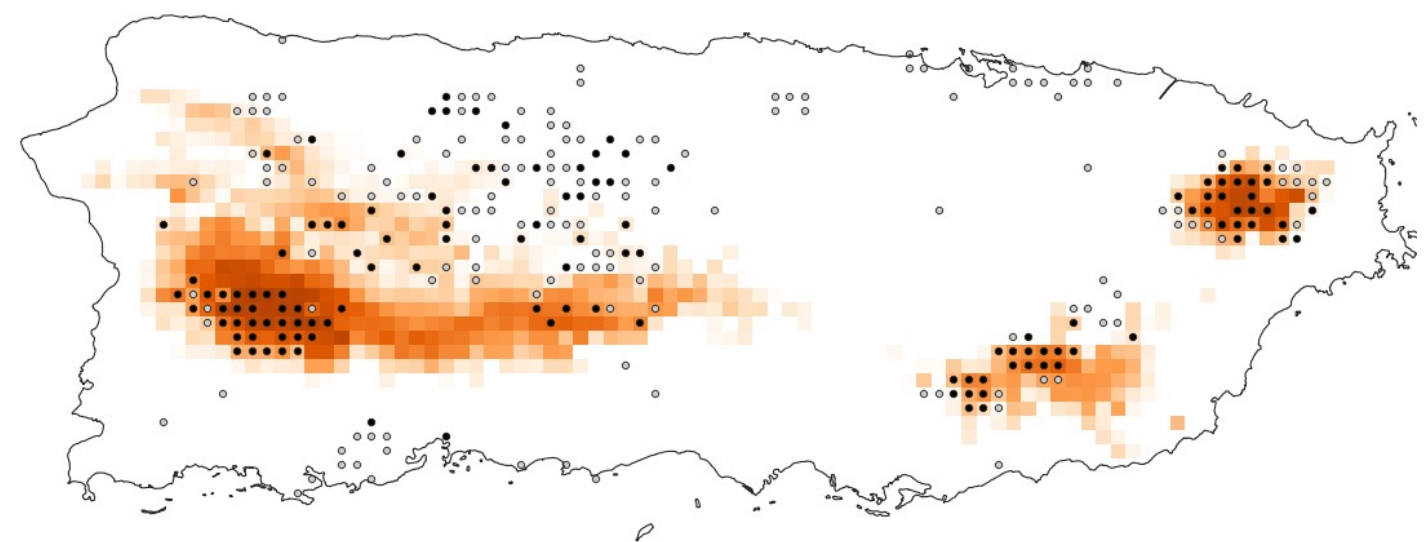
Historical

Historical records
• Present

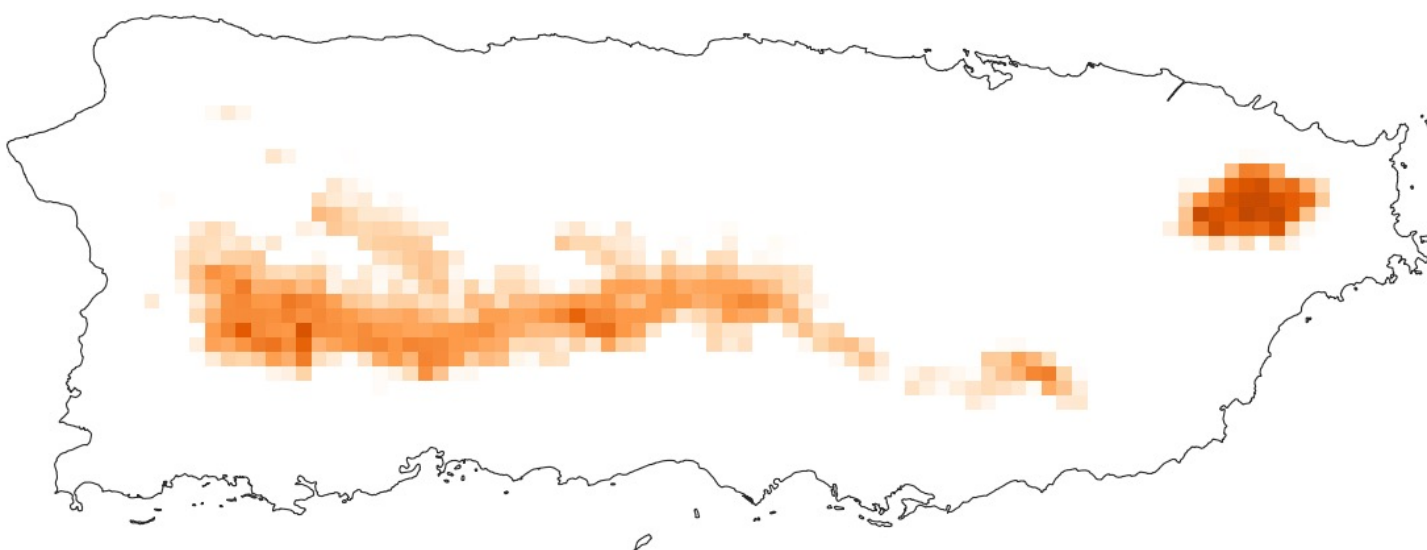


Current

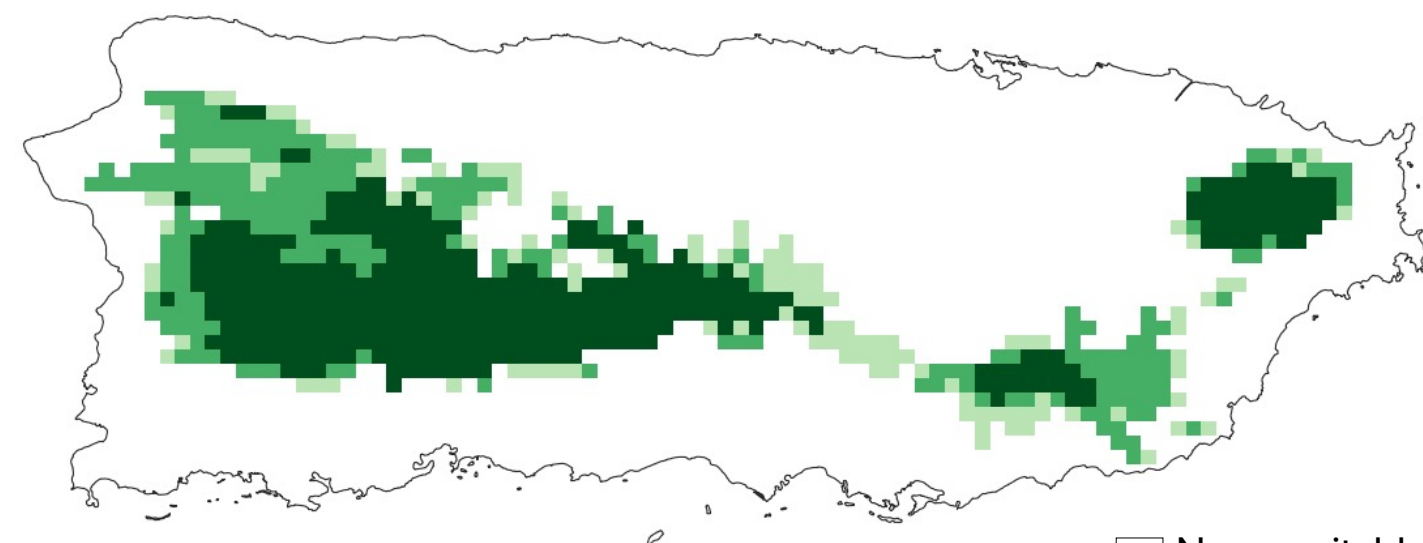
Acoustic Sampling sites
○ Absent
• Present



Future

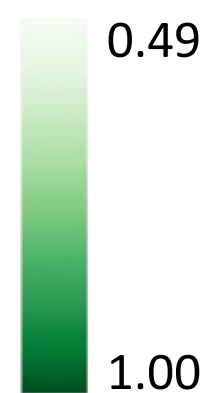


Habitat suitability



□ Never suitable
□ Suitable in one era
□ Suitable in two eras
□ Always-suitable

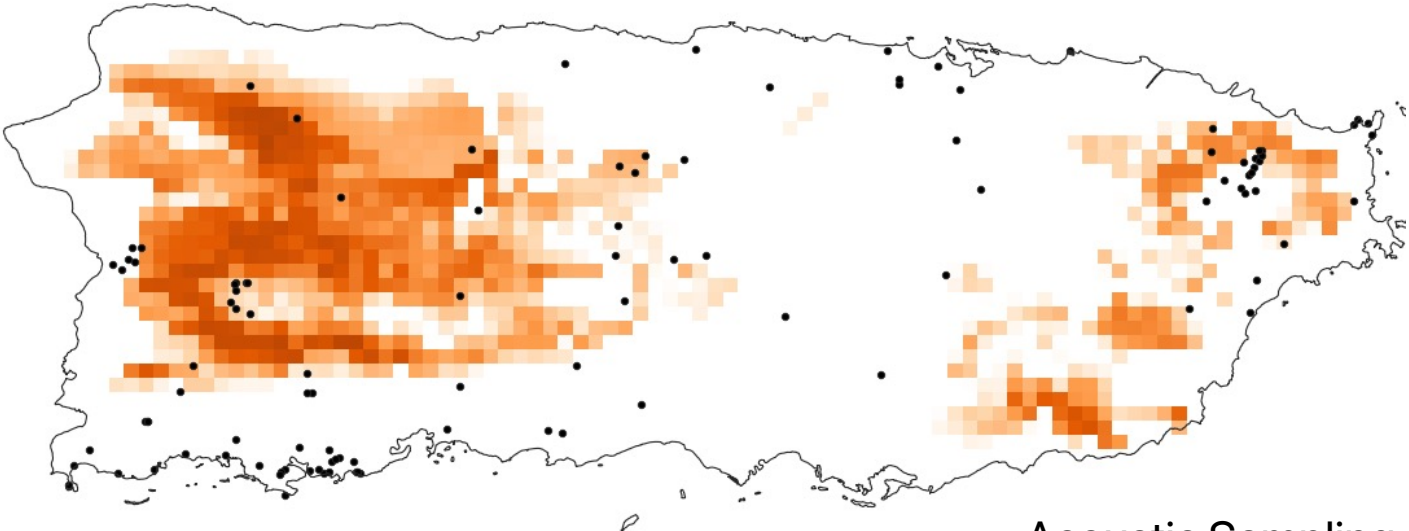
Predicted habitat suitability



Vireo altiloquus Black-whiskered Vireo Julián Chiví

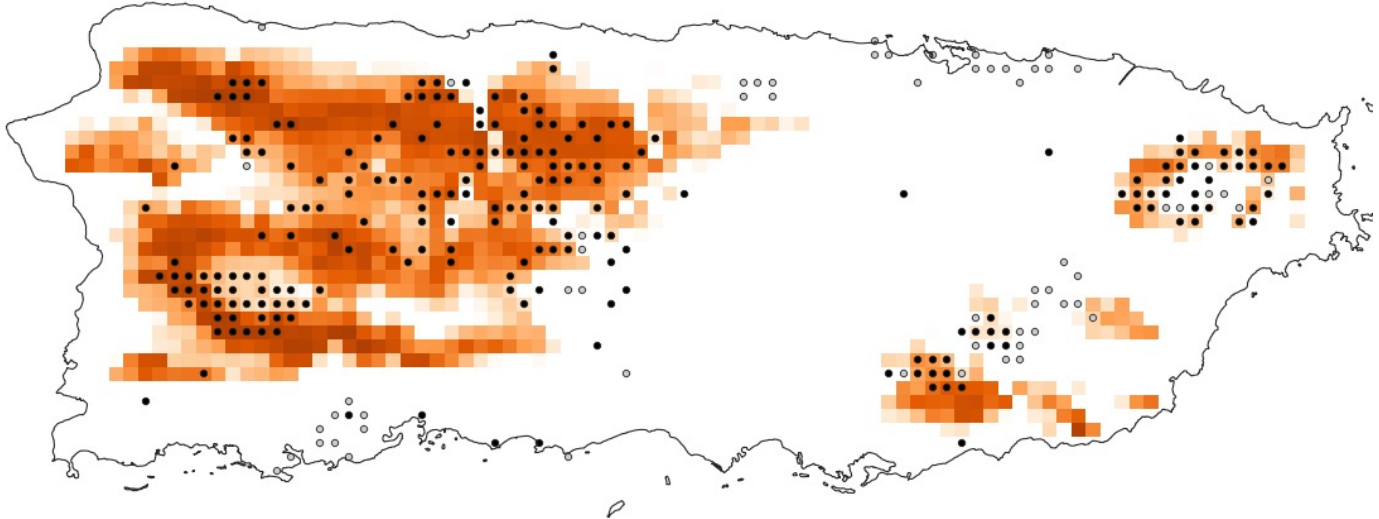
Historical

Historical records
• Present

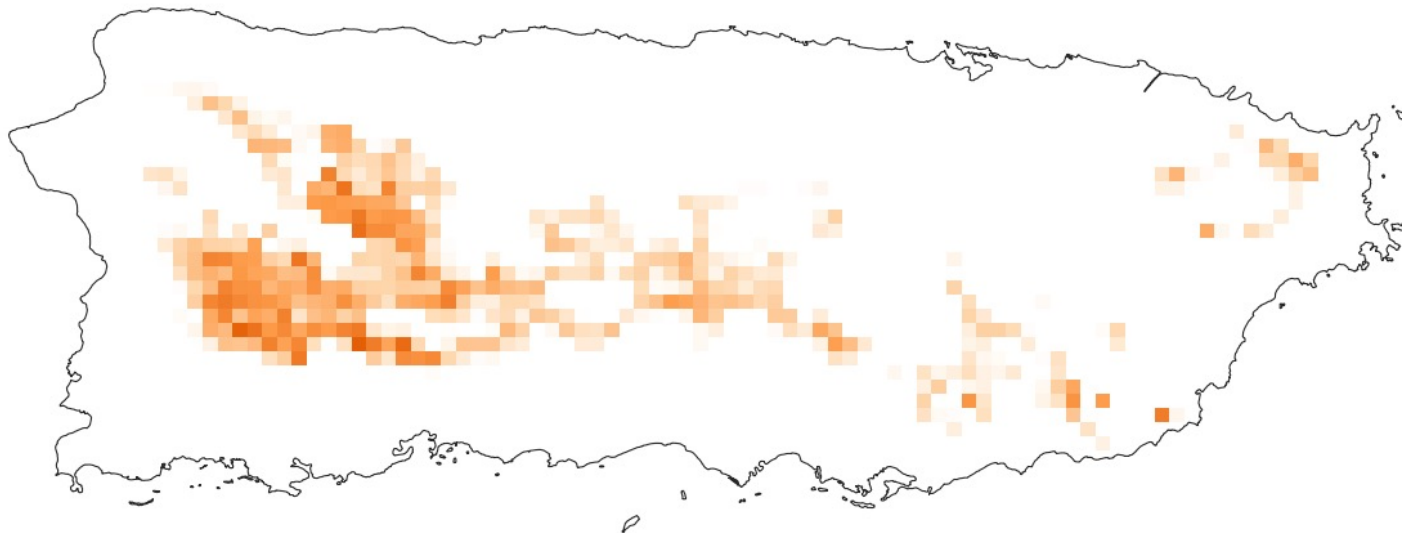


Current

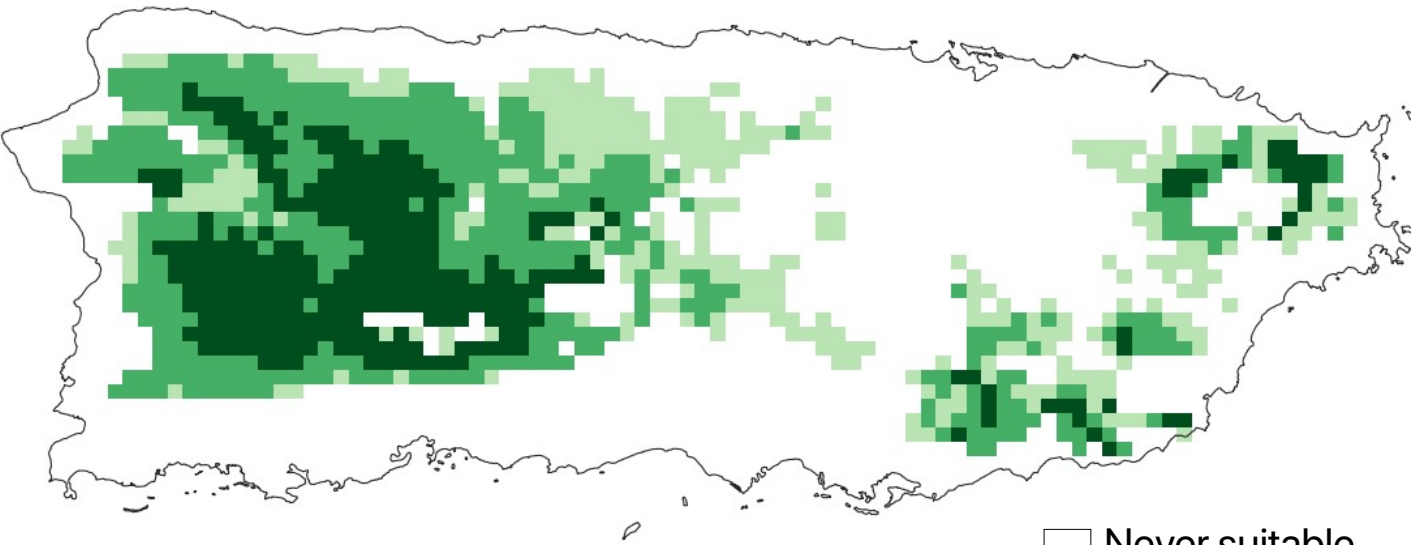
Acoustic Sampling sites
○ Absent
• Present



Future



Habitat suitability



□ Never suitable
□ Suitable in one era
□ Suitable in two eras
□ Always-suitable

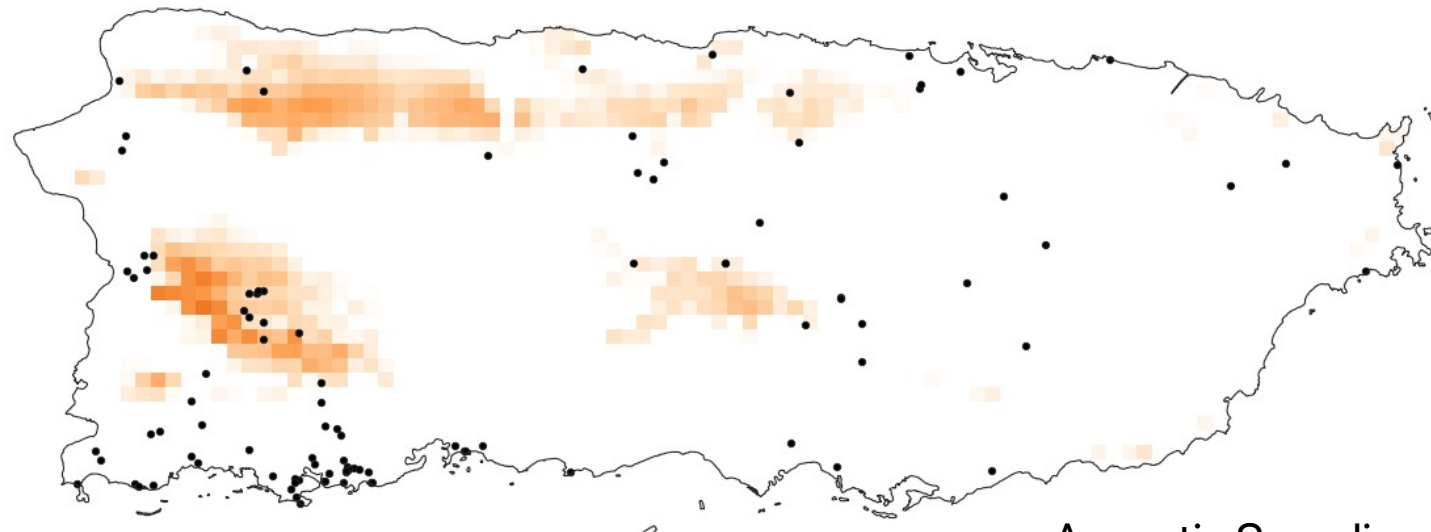
Predicted habitat suitability



Vireo latimeri Puerto Rican Vireo Bienteveo

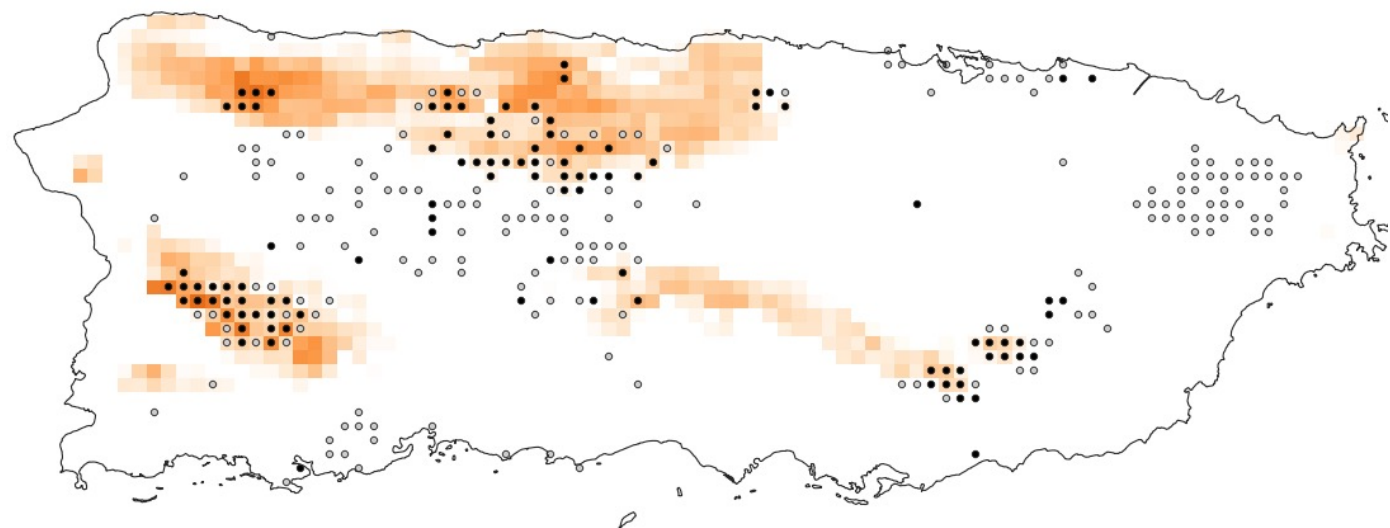
Historical

Historical records
• Present



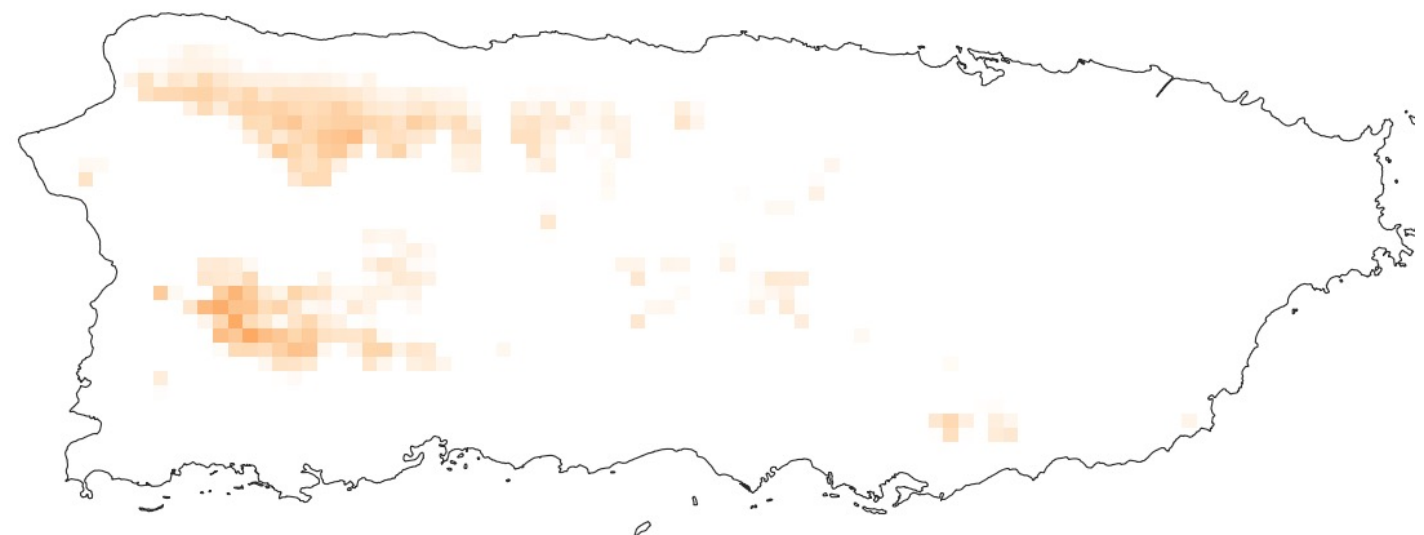
Current

Acoustic Sampling sites
○ Absent
• Present

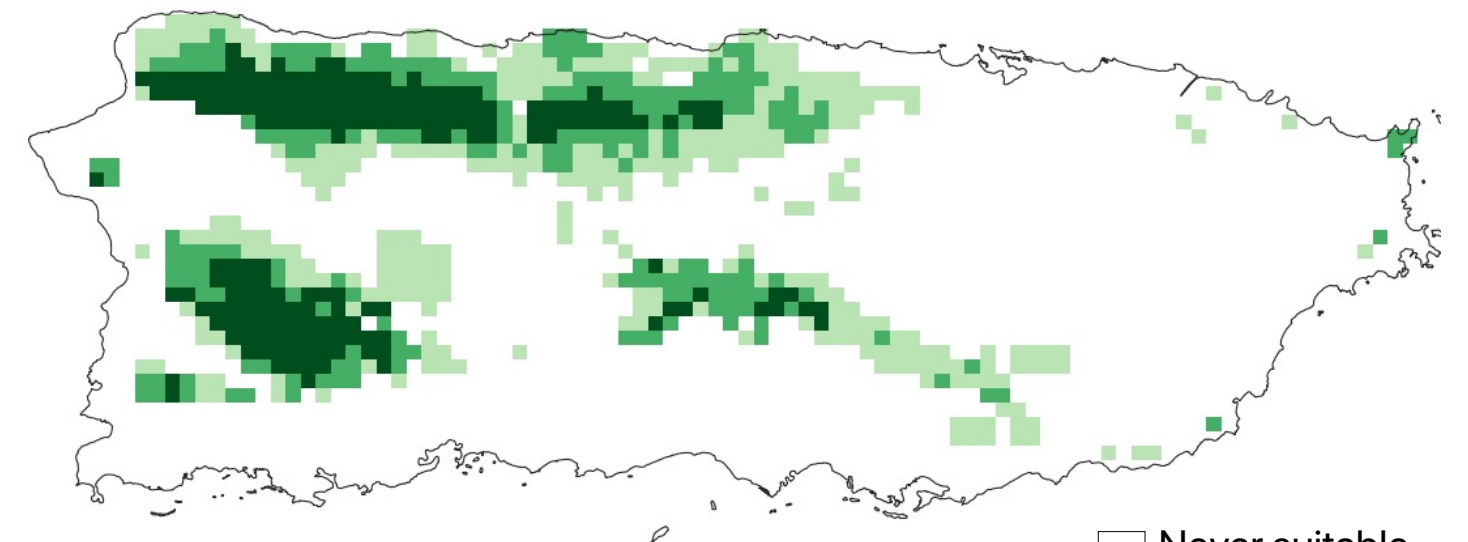


Future

Predicted habitat suitability



Habitat suitability

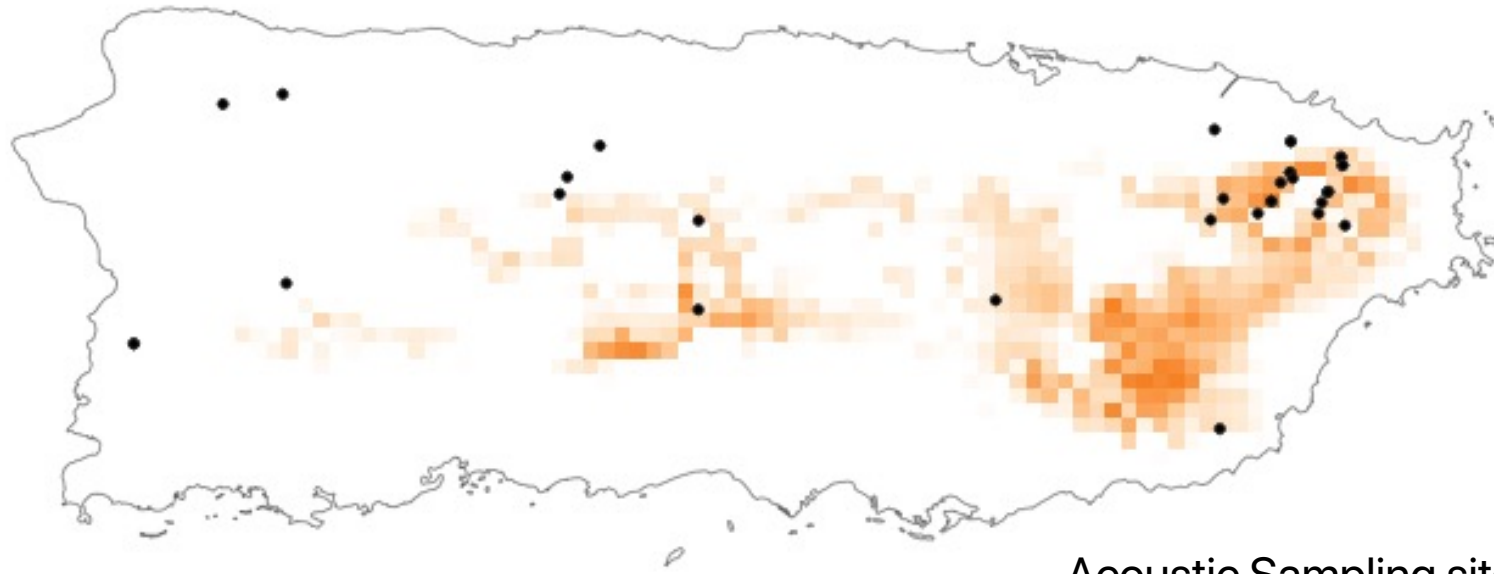


□ Never suitable
□ Suitable in one era
□ Suitable in two eras
■ Always-suitable

E. brittoni
Grass coqui
Coqui de las Hierbas

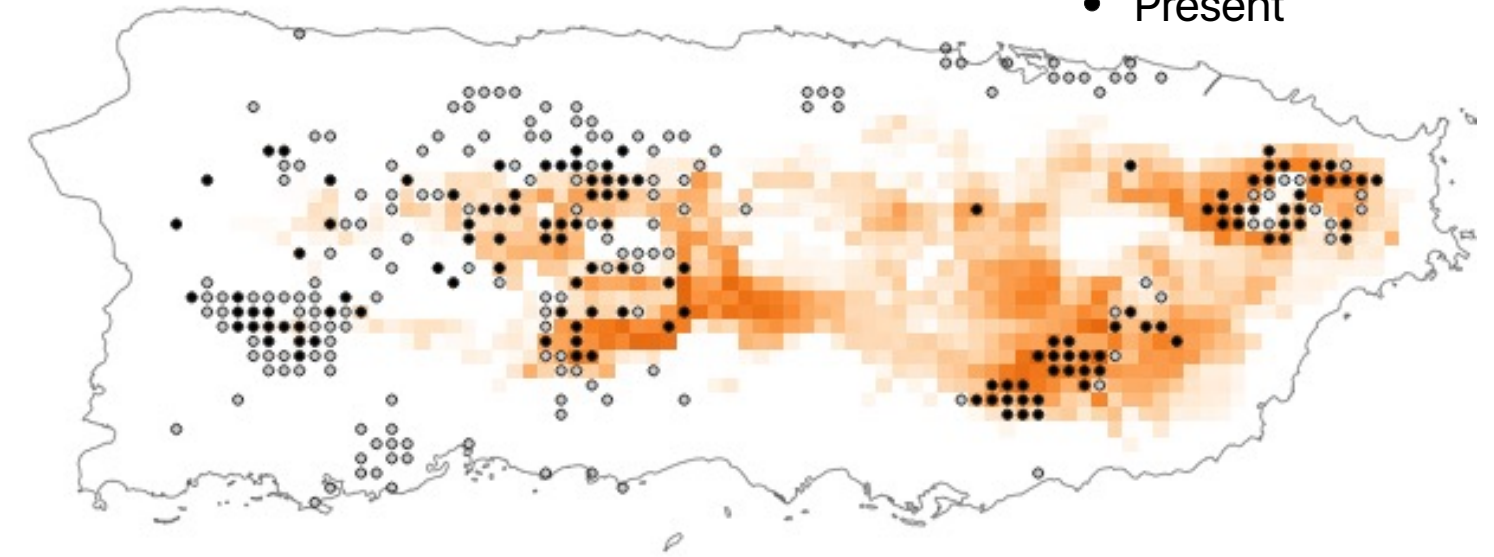
Historical

Historical records
• Present

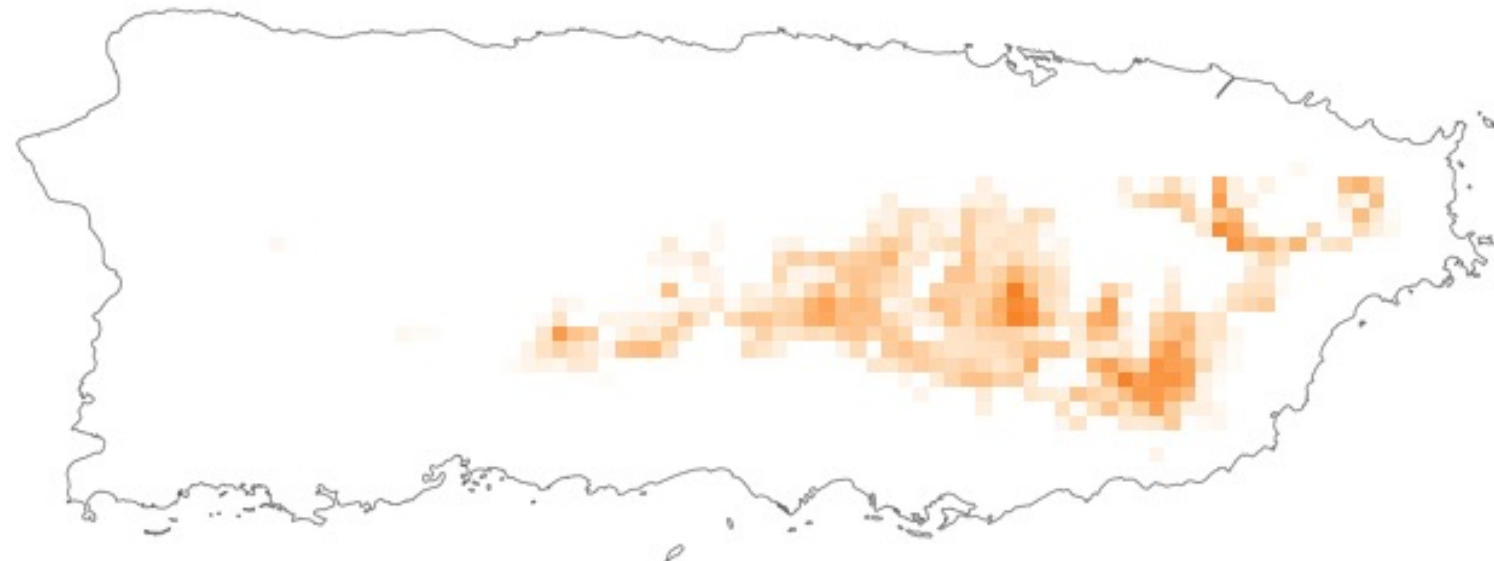


Current

Acoustic Sampling sites
○ Absent
• Present



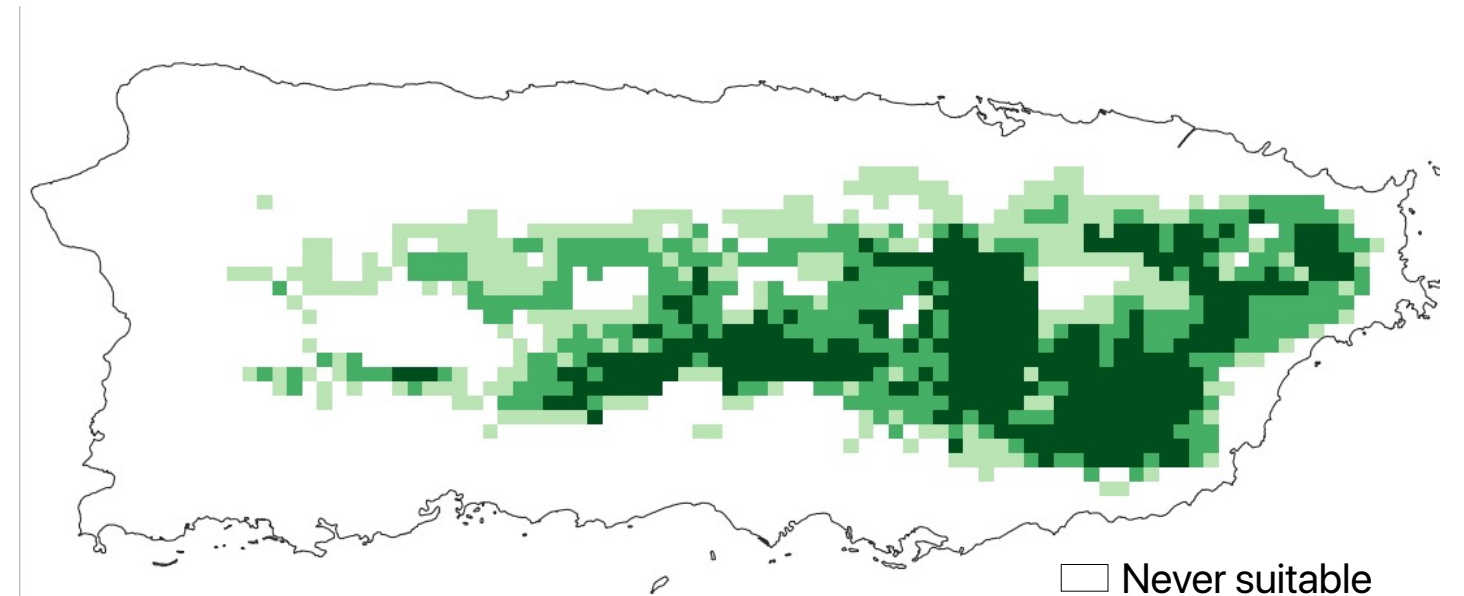
Future



Predicted habitat suitability



Habitat suitability



□ Never suitable
□ Suitable in one era
□ Suitable in two eras
□ Always-suitable

E. gryllus
Cricket coqui
Coqui Grillo

Historical

Historical records
• Present



Current

Acoustic Sampling sites
○ Absent
• Present



Future

Predicted habitat suitability



Habitat suitability

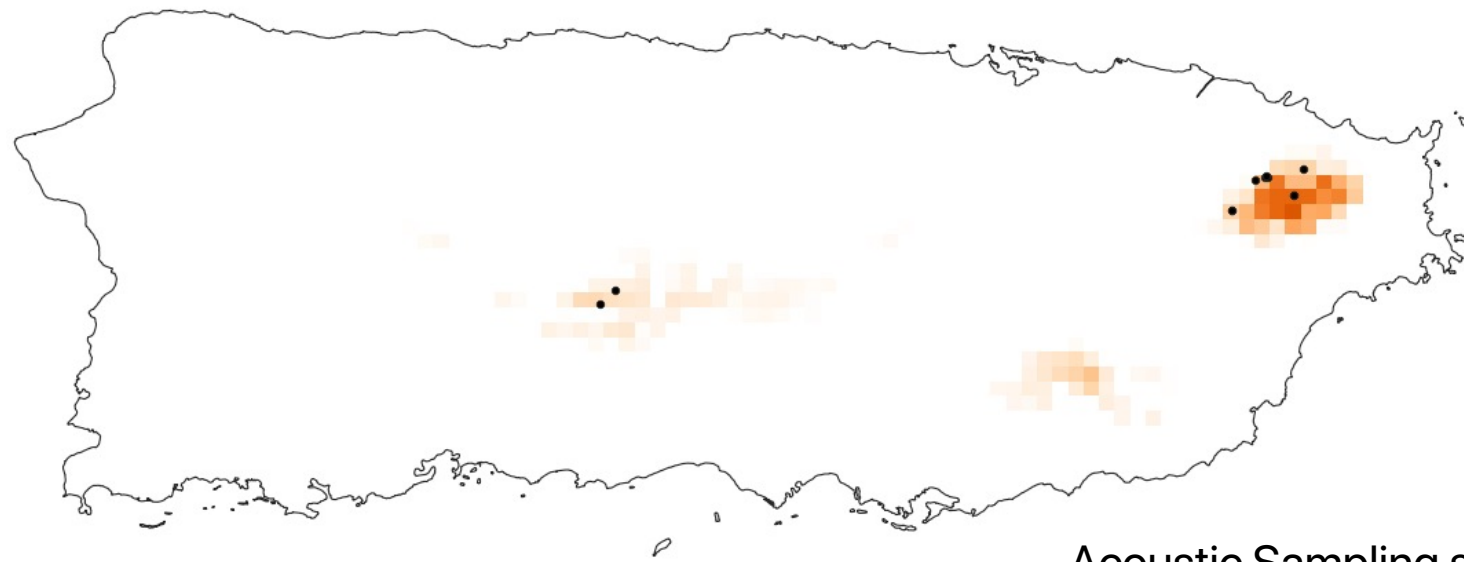


□ Never suitable
□ Suitable in one era
■ Suitable in two eras
■ Always-suitable

E. hedricki
Hedrick's coqui
Coqui de Hedrick

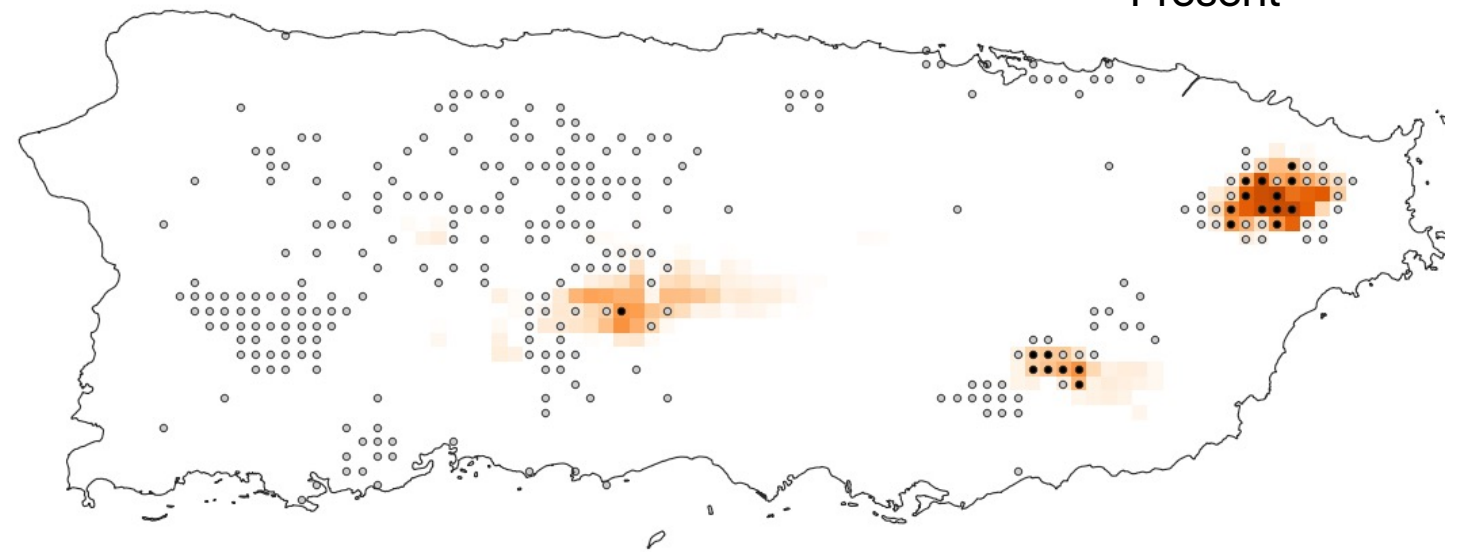
Historical

Historical records
• Present

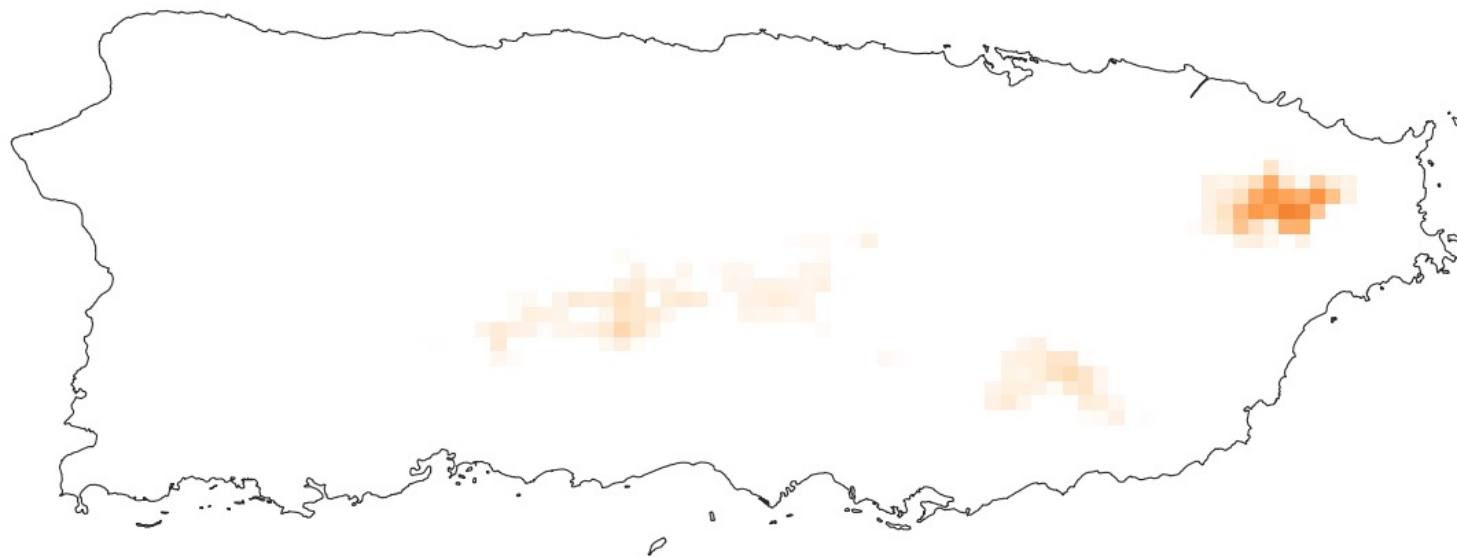


Current

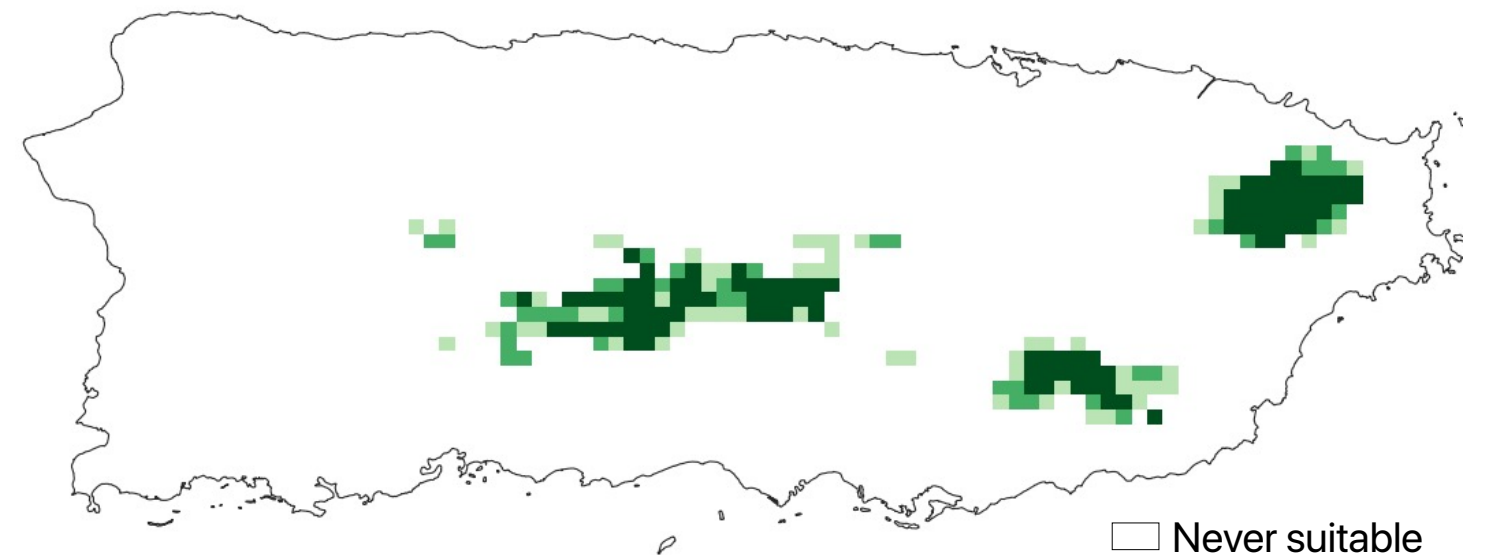
Acoustic Sampling sites
○ Absent
• Present



Future



Habitat suitability



Predicted habitat suitability

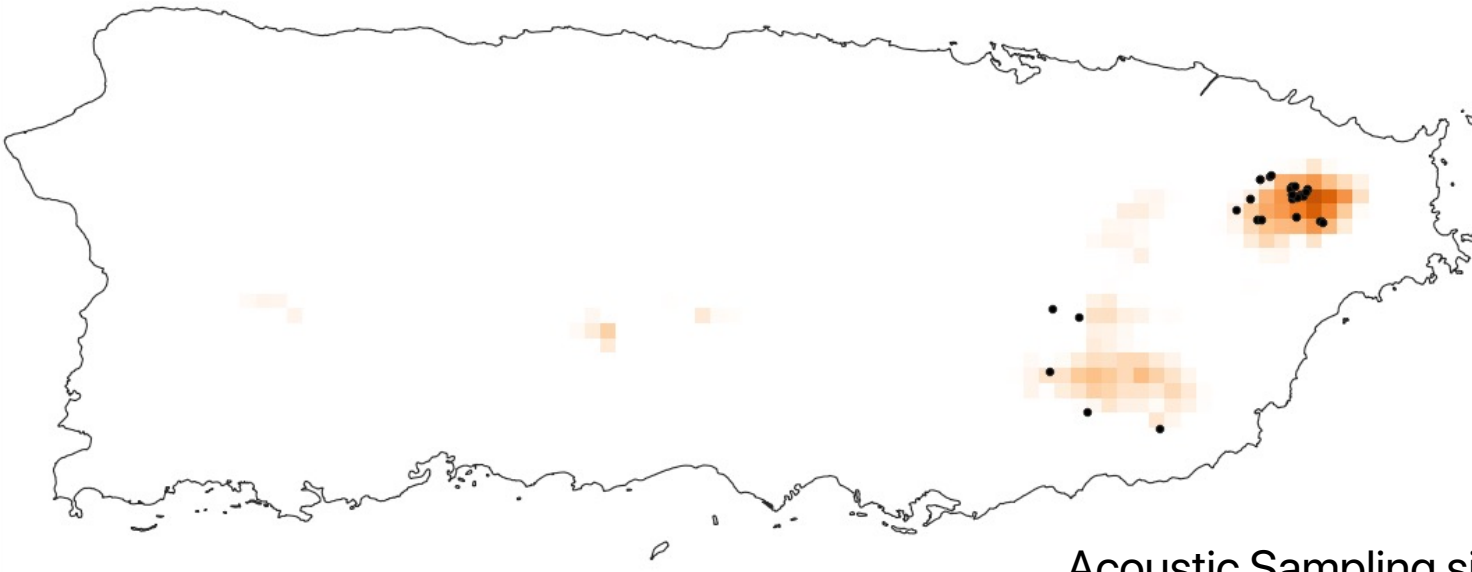


- Never suitable
- Suitable in one era
- Suitable in two eras
- Always-suitable

E. locustus Locust coqui Coqui Martillito

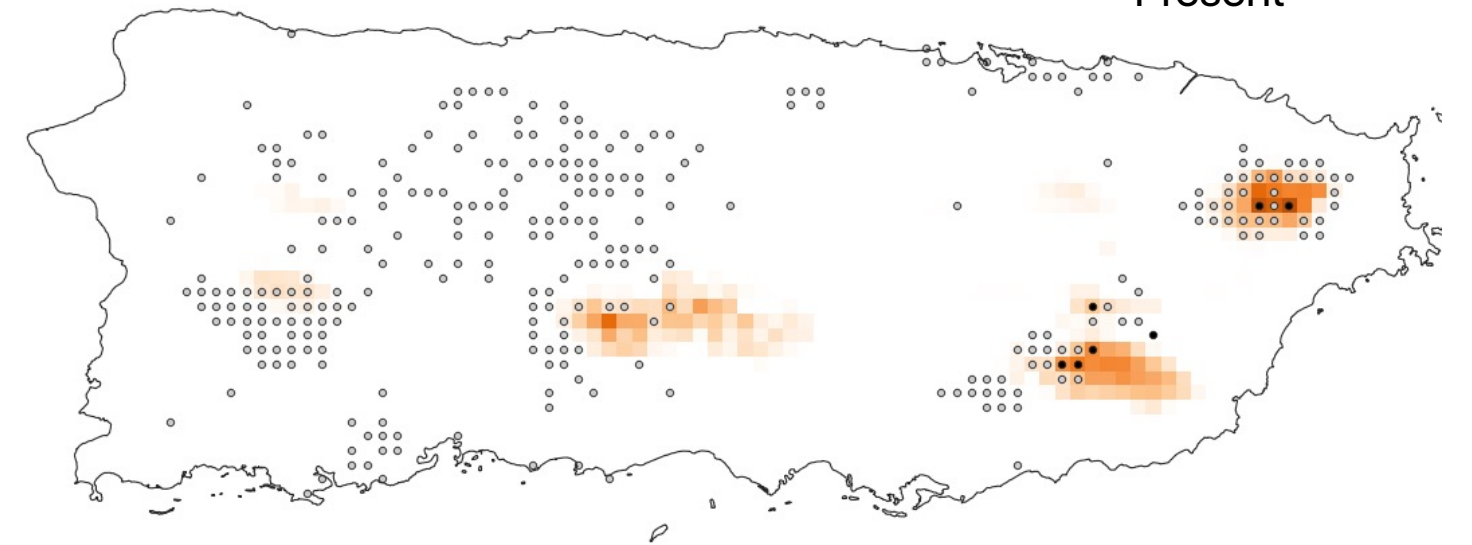
Historical

Historical records
• Present

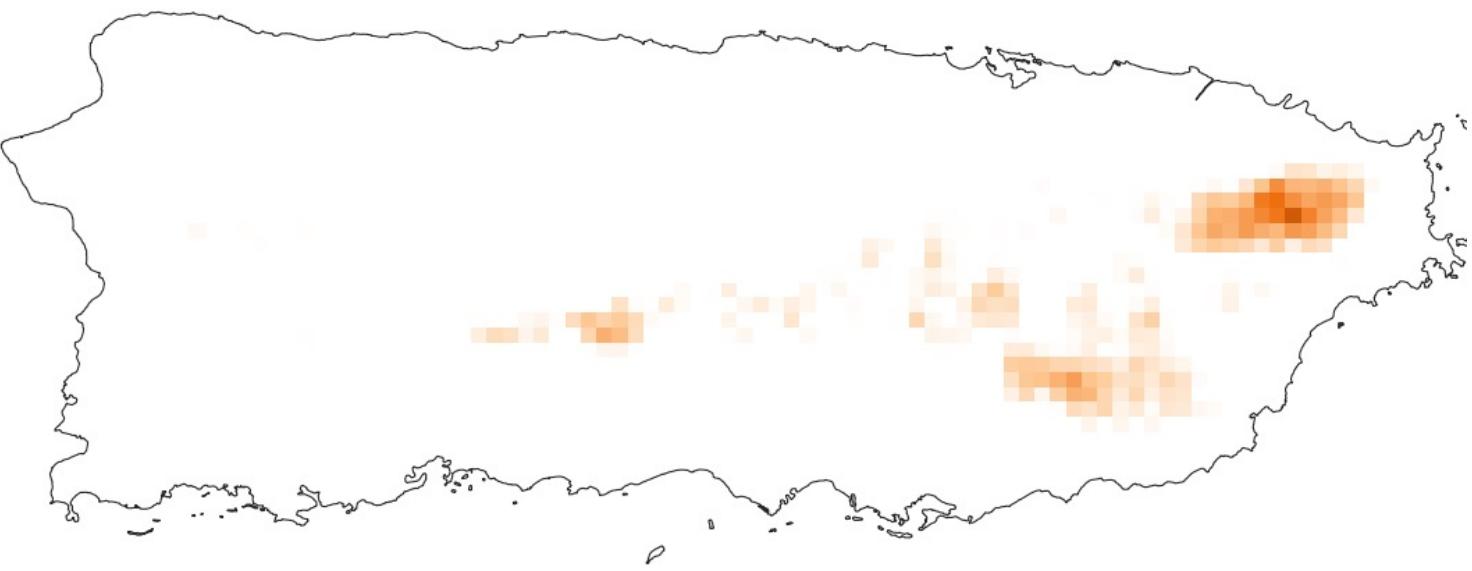


Current

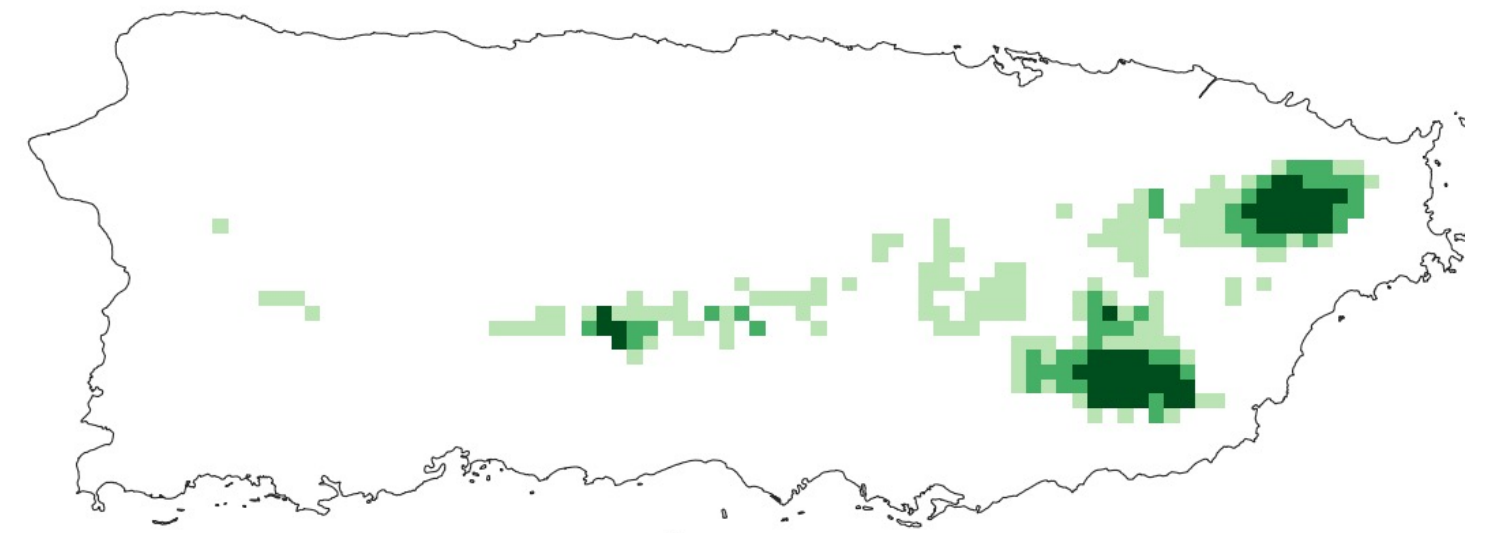
Acoustic Sampling sites
○ Absent
● Present



Future



Habitat suitability



□ Never suitable
□ Suitable in one era
□ Suitable in two eras
□ Always-suitable

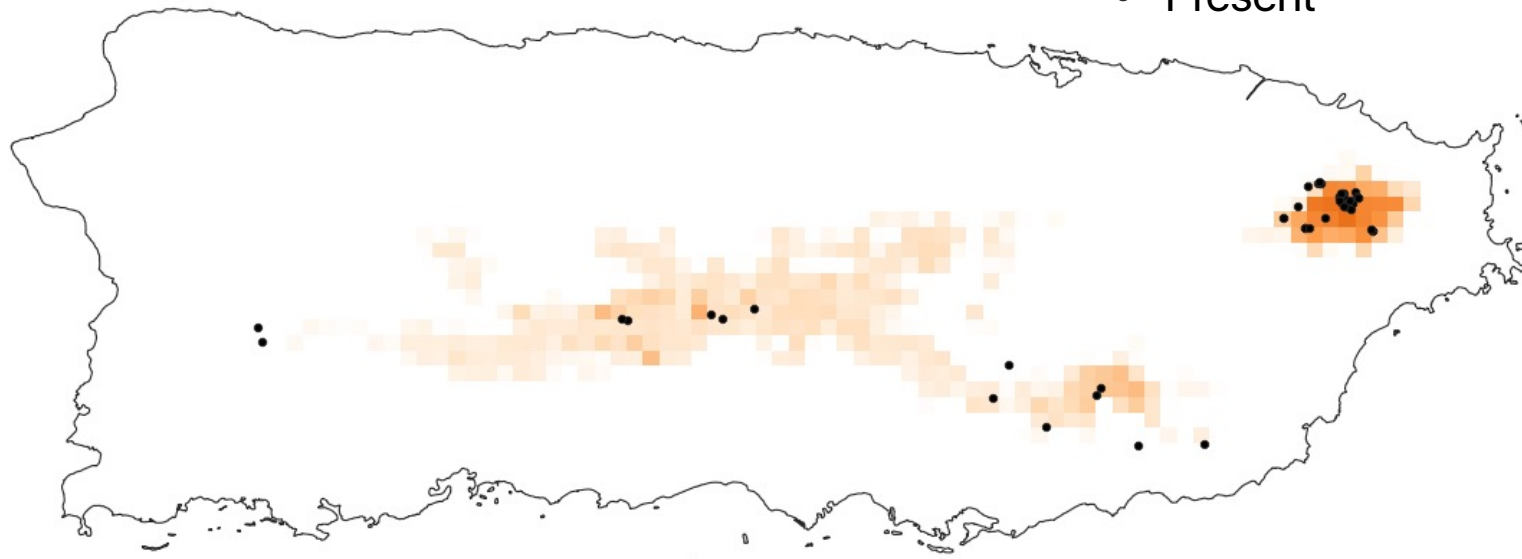
Predicted habitat suitability



E. portoricensis Mountain coqui Coqui de la montaña

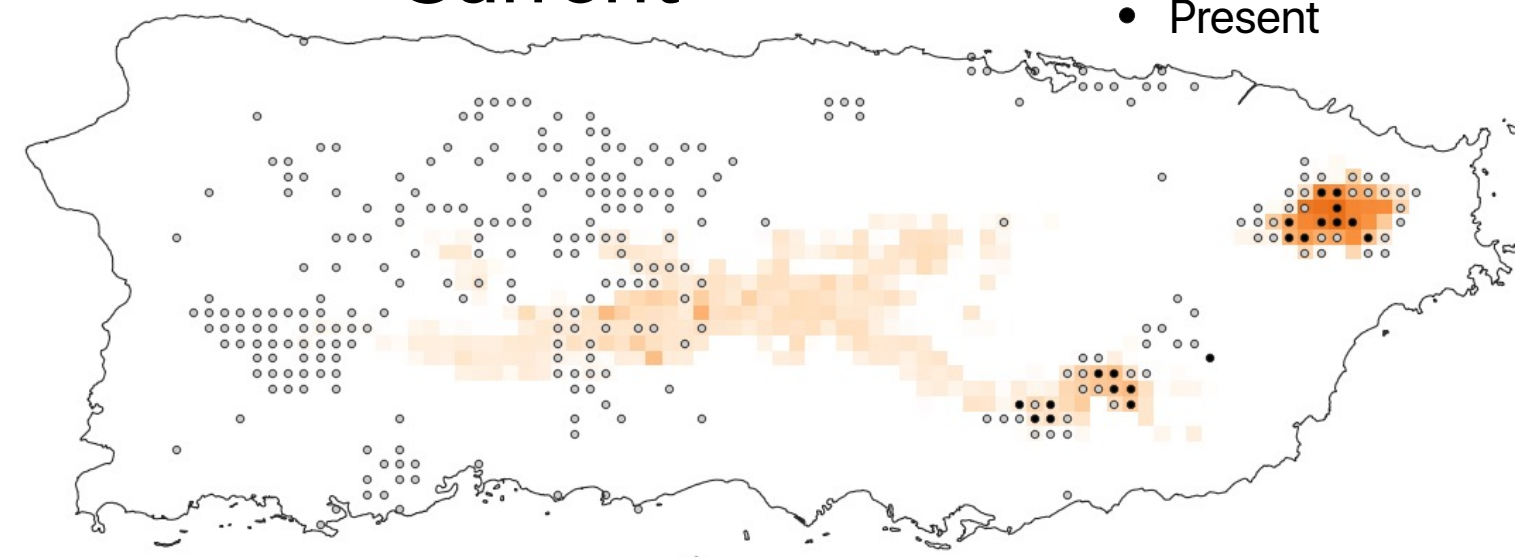
Historical

Historical records
• Present

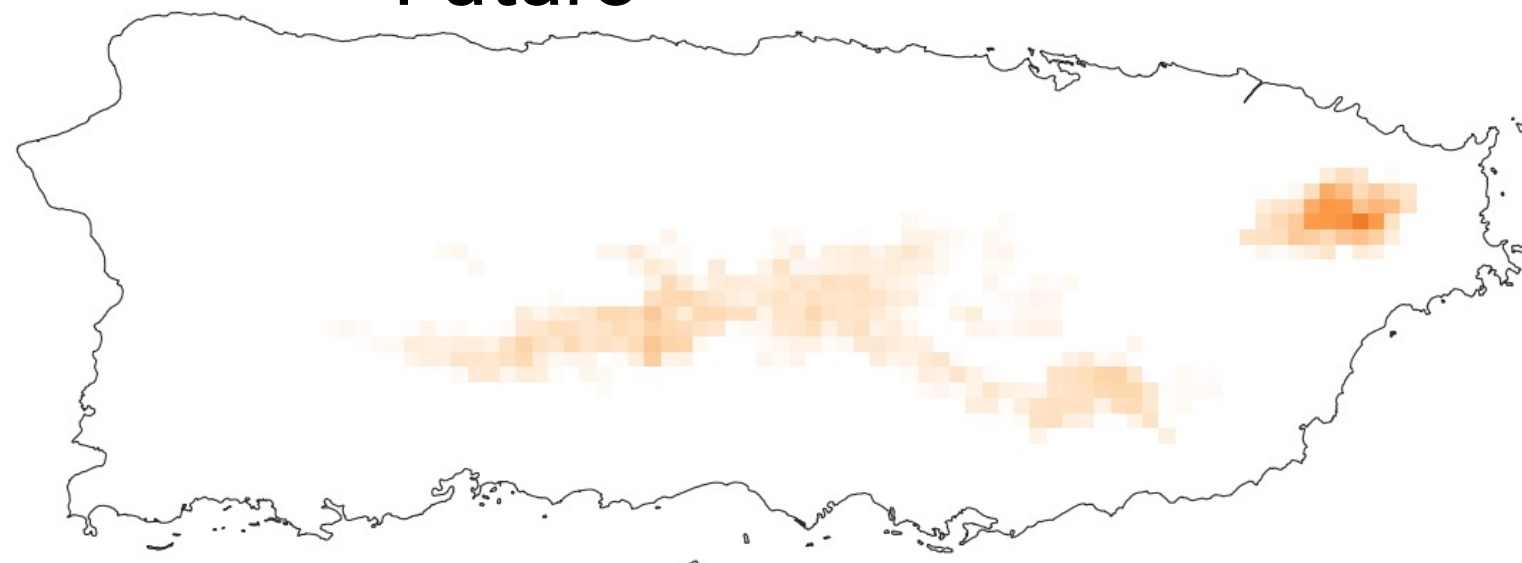


Current

Acoustic Sampling sites
○ Absent
● Present



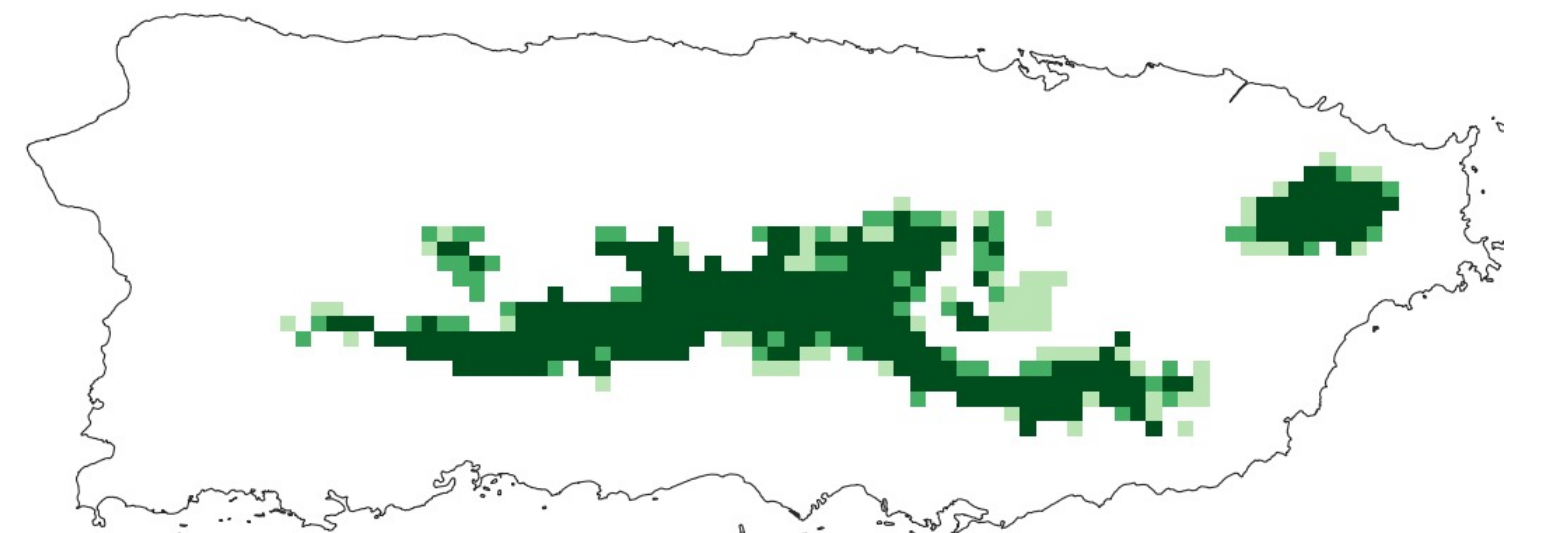
Future



Predicted habitat suitability



Habitat suitability

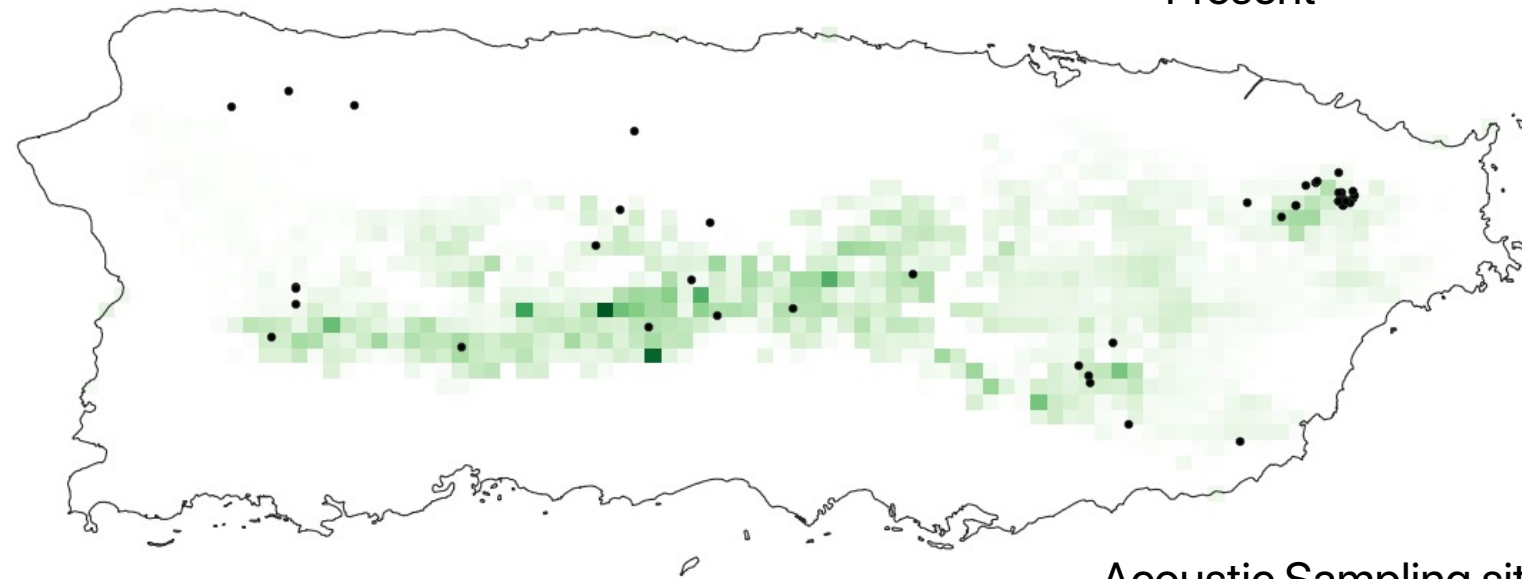


- Never suitable
- Suitable in one era
- Suitable in two eras
- Always-suitable

E. richmondi
Richmond's coqui
Coqui Caoba

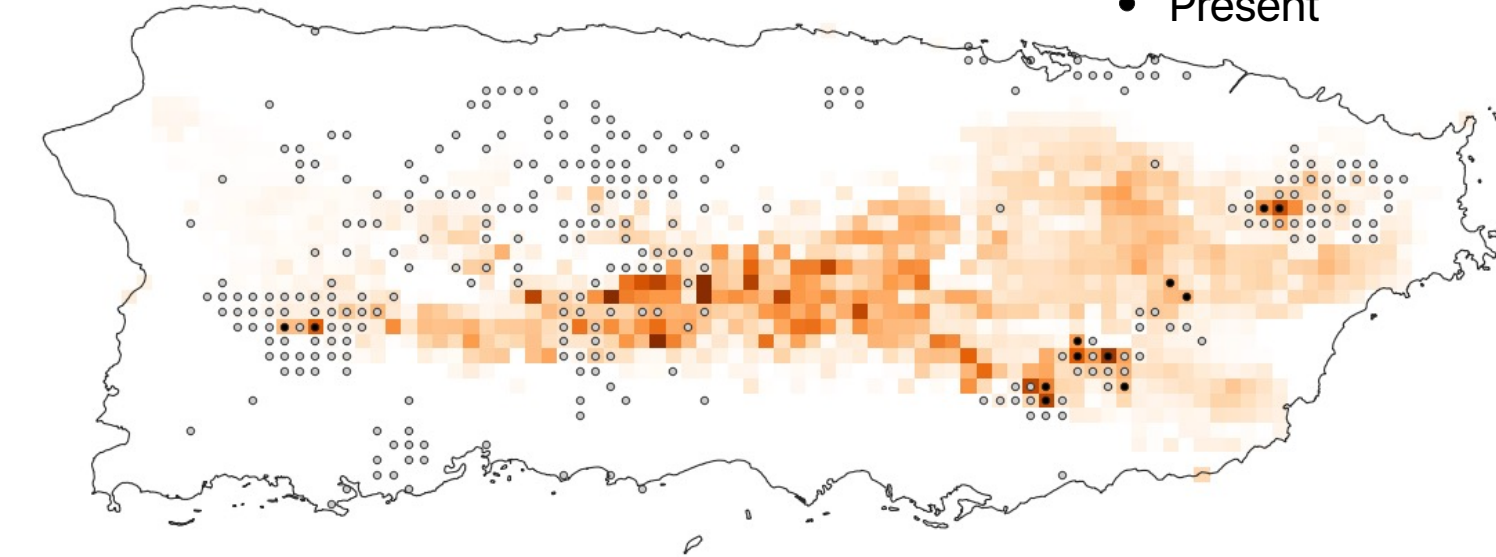
Historical

Historical records
• Present

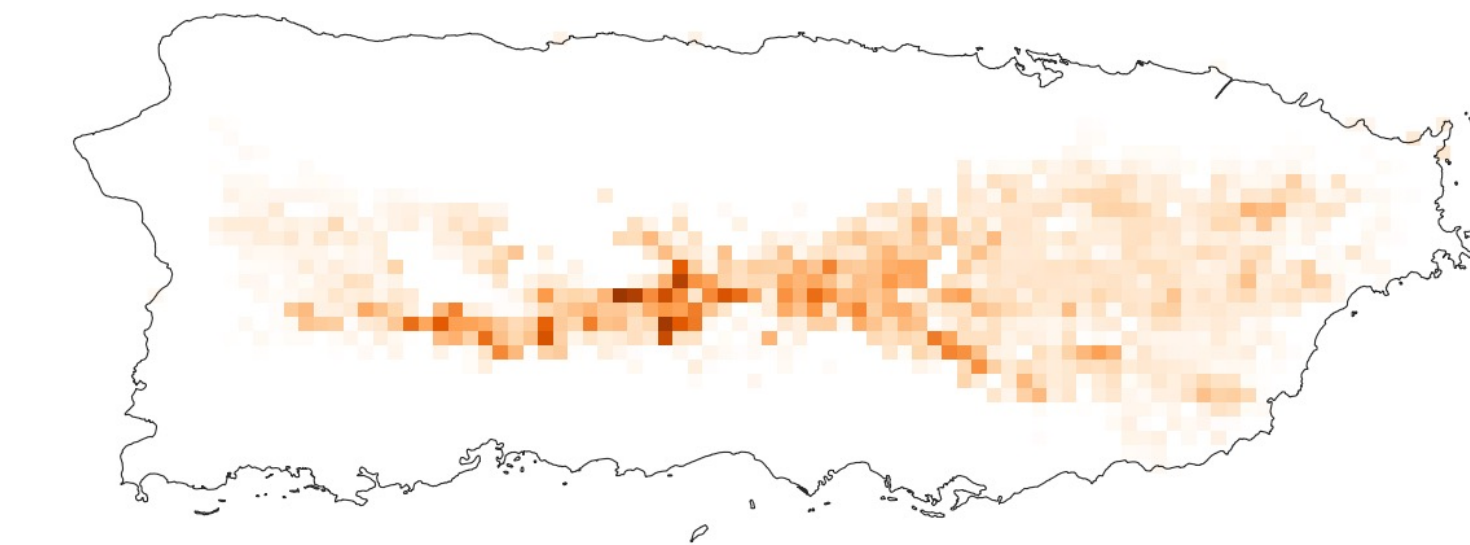


Current

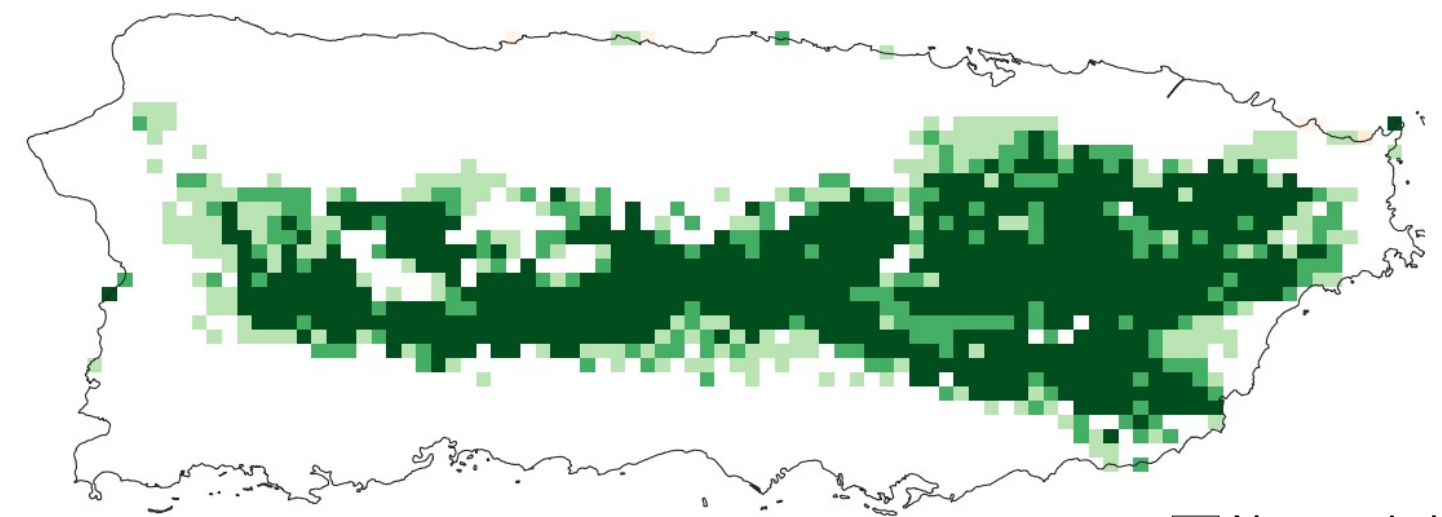
Acoustic Sampling sites
○ Absent
• Present



Future



Habitat suitability



□ Never suitable
□ Suitable in one era
□ Suitable in two eras
□ Always-suitable

Predicted habitat suitability



E. unicolor
Dwarf coqui
Coqui Duende

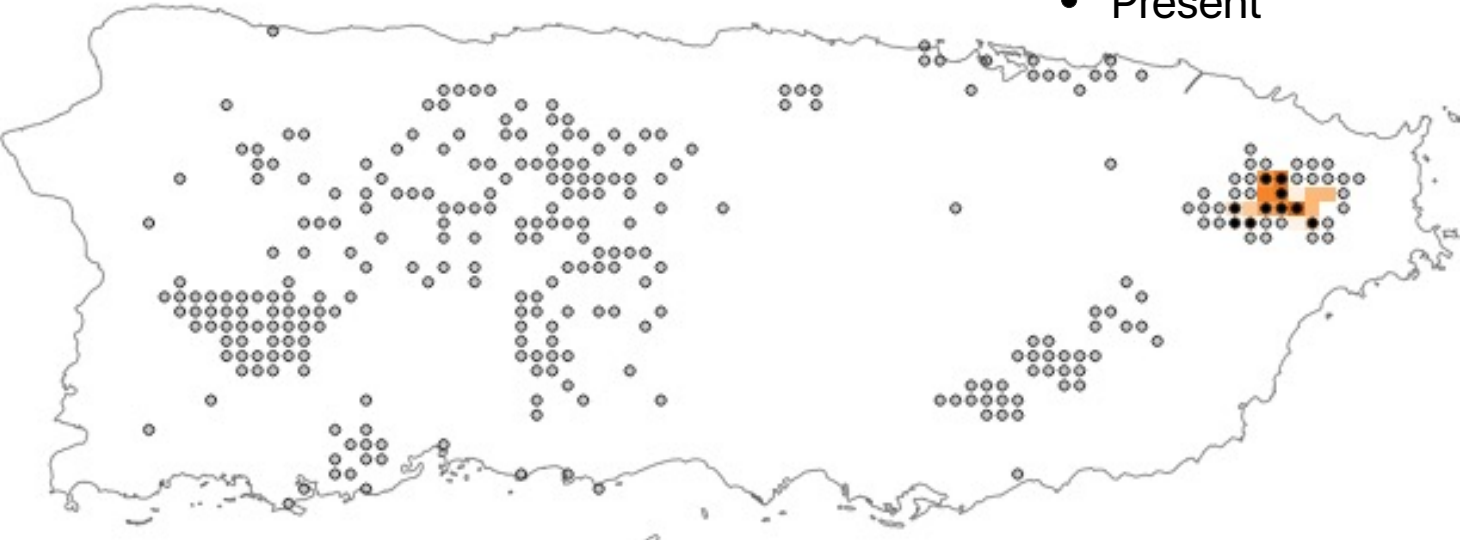
Historical

Historical records
• Present



Current

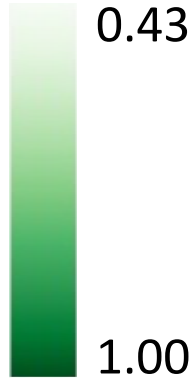
Acoustic Sampling sites
○ Absent
● Present



Future



Predicted habitat suitability



Habitat suitability

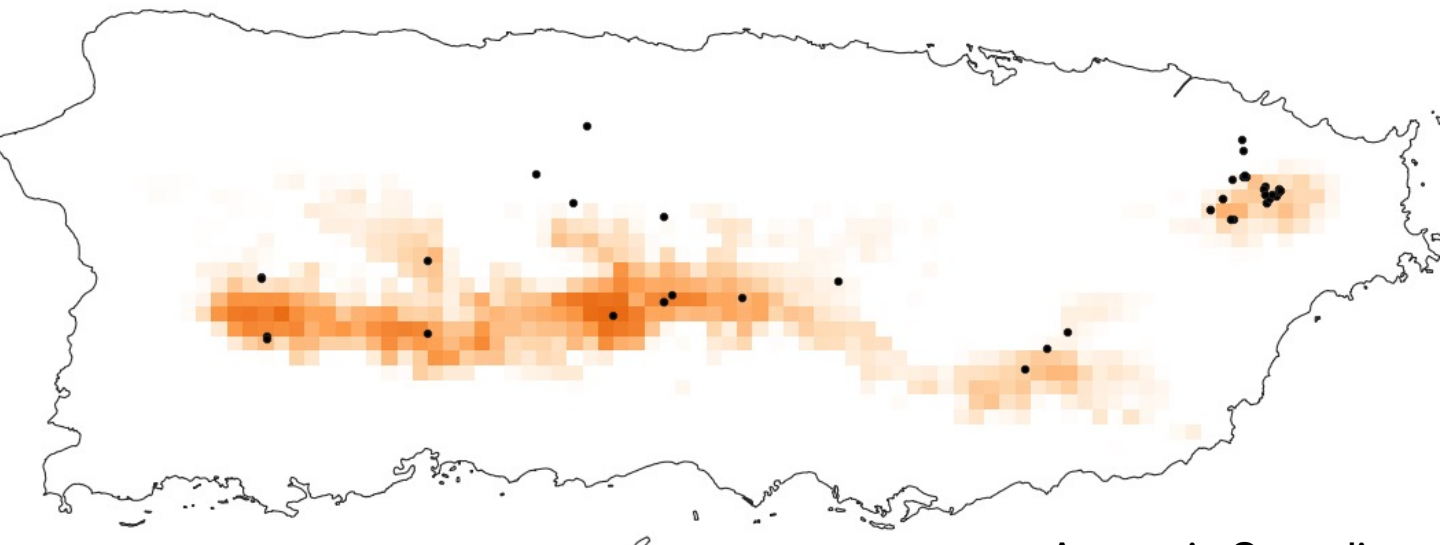


Legend for Habitat suitability:
□ Never suitable
□ Suitable in one era
□ Suitable in two eras
□ Always-suitable

E. wightmanae
Melodious coqui
Coqui melodioso

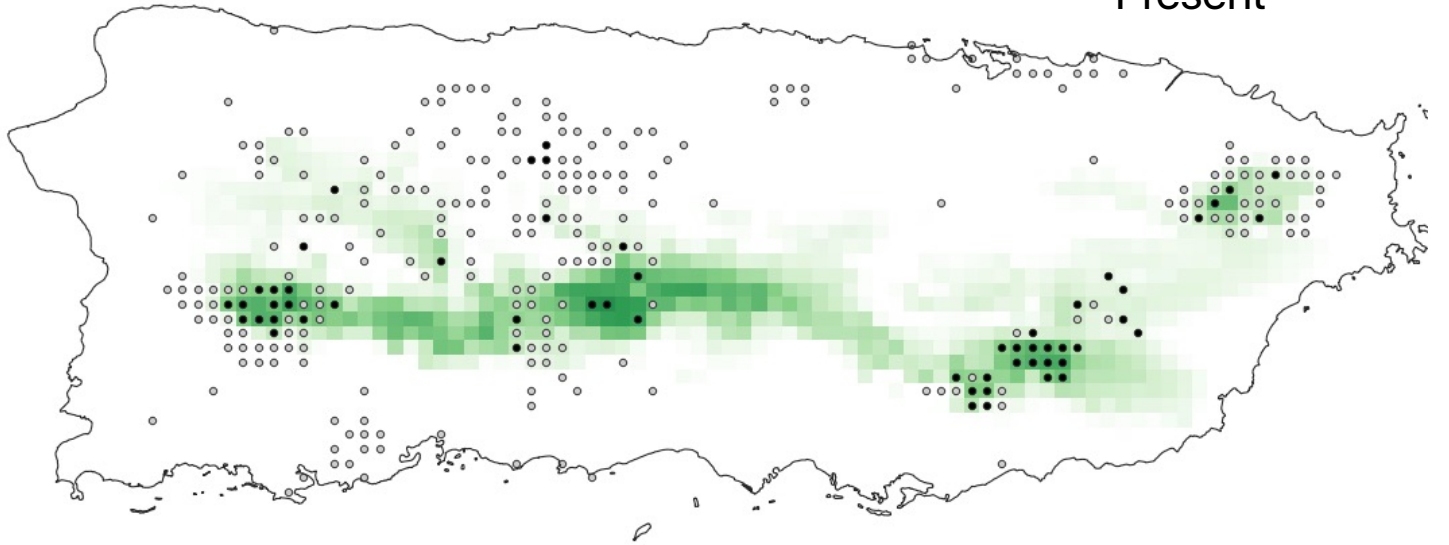
Historical

Historical records
• Present

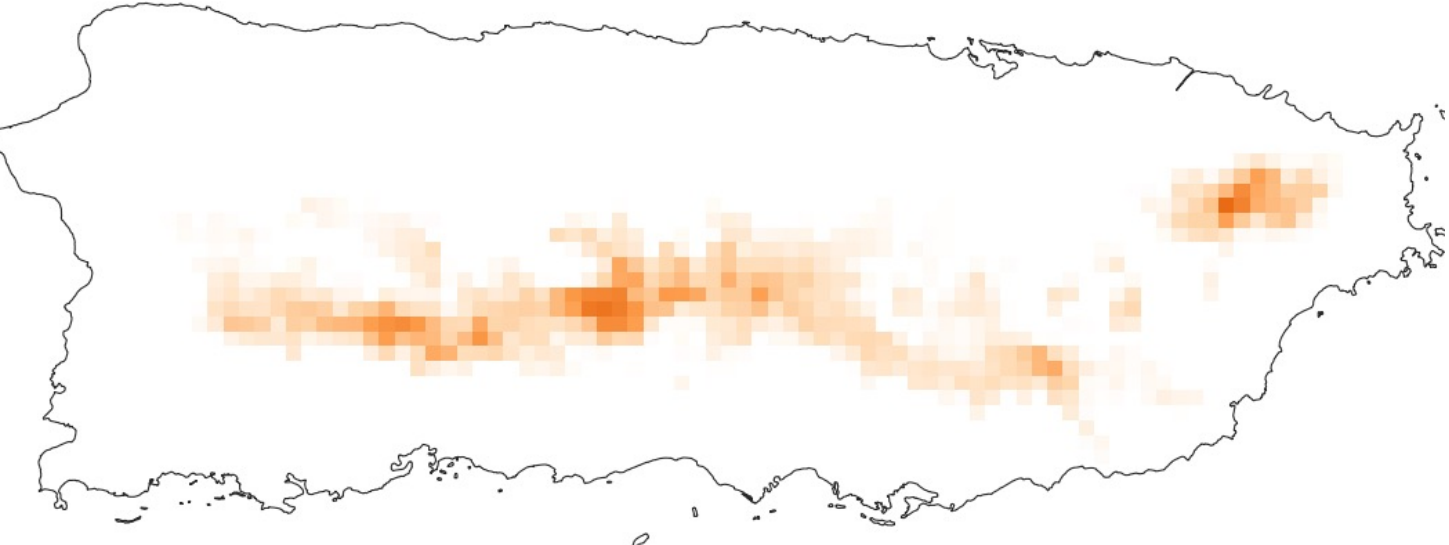


Current

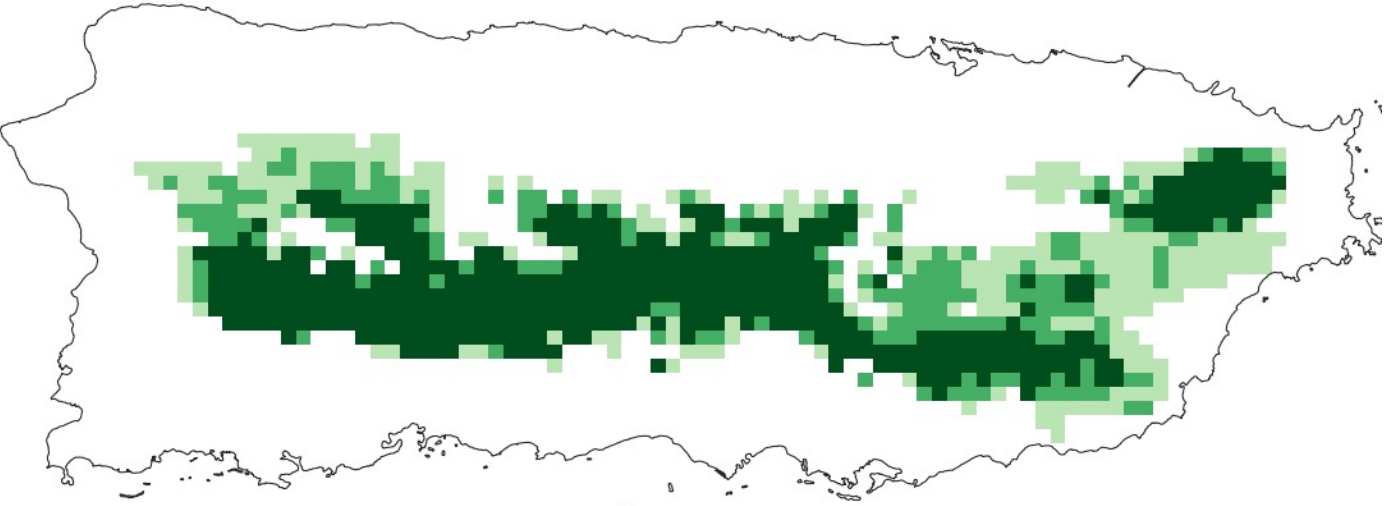
Acoustic Sampling sites
○ Absent
• Present



Future



Habitat suitability



□ Never suitable
□ Suitable in one era
□ Suitable in two eras
□ Always-suitable

Predicted habitat suitability

