

1 **Supplementary Material 1**

2 Supplementary material includes: Table of observed and expected values for the trait
3 'Regularity of Teeth' for six Red List categories; table of year of collection of herbarium
4 material divided by six Red List categories; stacked bar charts and boxplots of leaf traits for
5 six Red List categories; 95% confidence intervals for the difference in proportions of the sub-
6 categories of 'Regularity of Teeth' for each Red List category pair; stressplot for the nMDS
7 ordination; and images of the 14 taxa photographed at the National Botanic Gardens,
8 Glasnevin.

9

10 Can the extinction risk of Irish vascular plants be predicted using leaf traits?

11 Biodiversity and Conservation

12 Harrison O'Rourke^{1*}, Eimear Nic Lughadha², and Karen L. Bacon¹

13 ¹ Botany & Plant Sciences, Natural Sciences, National University of Ireland, Galway, Ireland

14 ² Conservation Science Department, Royal Botanic Gardens, Kew, Richmond, UK

15 * corresponding author (h.orourke2@nuigalway.ie)

16

17

18

19

20 Table S1. The number of observed values for the trait 'Regularity of Teeth' (top); and the
 21 number of expected values if there was no association between 'Regularity of Teeth' and
 22 extinction risk (bottom).

Observed						
	RE	CR	EN	VU	NT	LC
No Teeth	12	11	18	41	75	596
Regularly Spaced Teeth	0	1	2	8	7	121
Irregularly Spaced Teeth	1	7	5	5	8	111
Expected						
No Teeth	9.51	13.90	18.29	39.52	65.86	605.91
Regularly Spaced Teeth	1.76	2.57	3.38	7.29	12.16	111.85
Irregularly Spaced Teeth	1.73	2.53	3.33	7.19	11.98	110.24

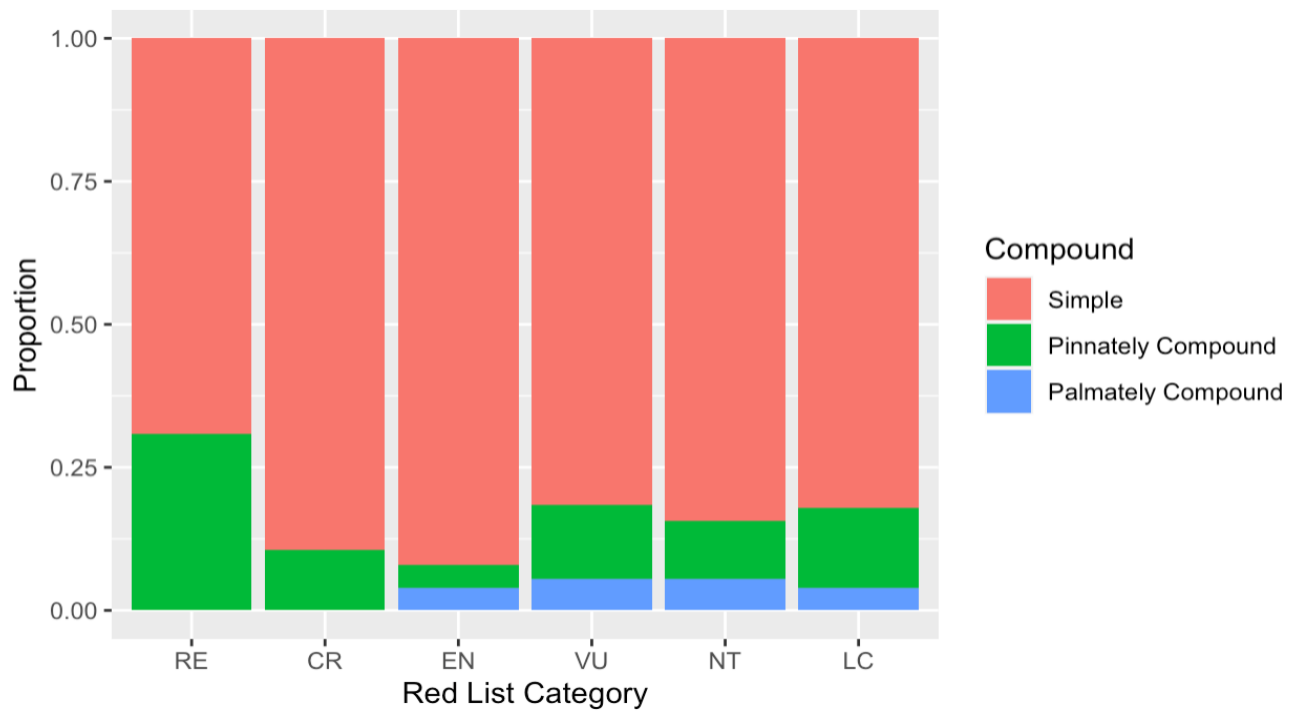
23

24 Table S2. Mean year in which the herbarium samples were collected, divided by Red List
 25 category.

Red List Category	Mean (\pm SD)
Regionally Extinct	1916 (\pm 50.25)
Critically Endangered	1923.84 (\pm 38.84)
Endangered	1917.92 (\pm 41.58)
Vulnerable	1930.89 (\pm 40.31)
Near Threatened	1929.76 (\pm 49.02)
Least Concern	1943.29 (\pm 45.32)

26

27

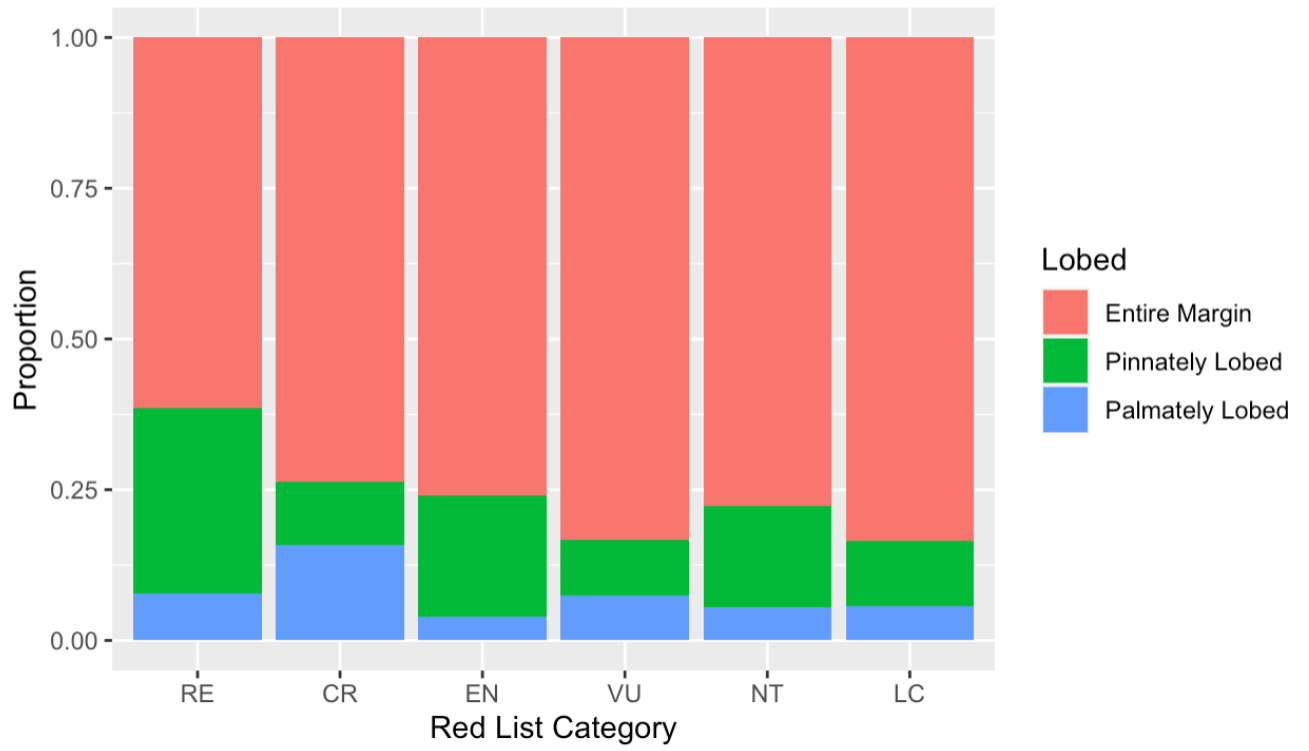


28

29 **Fig. S1** Stacked bar chart of the proportion of compound leaves for the Irish flora divided

30 into six extinction risk categories

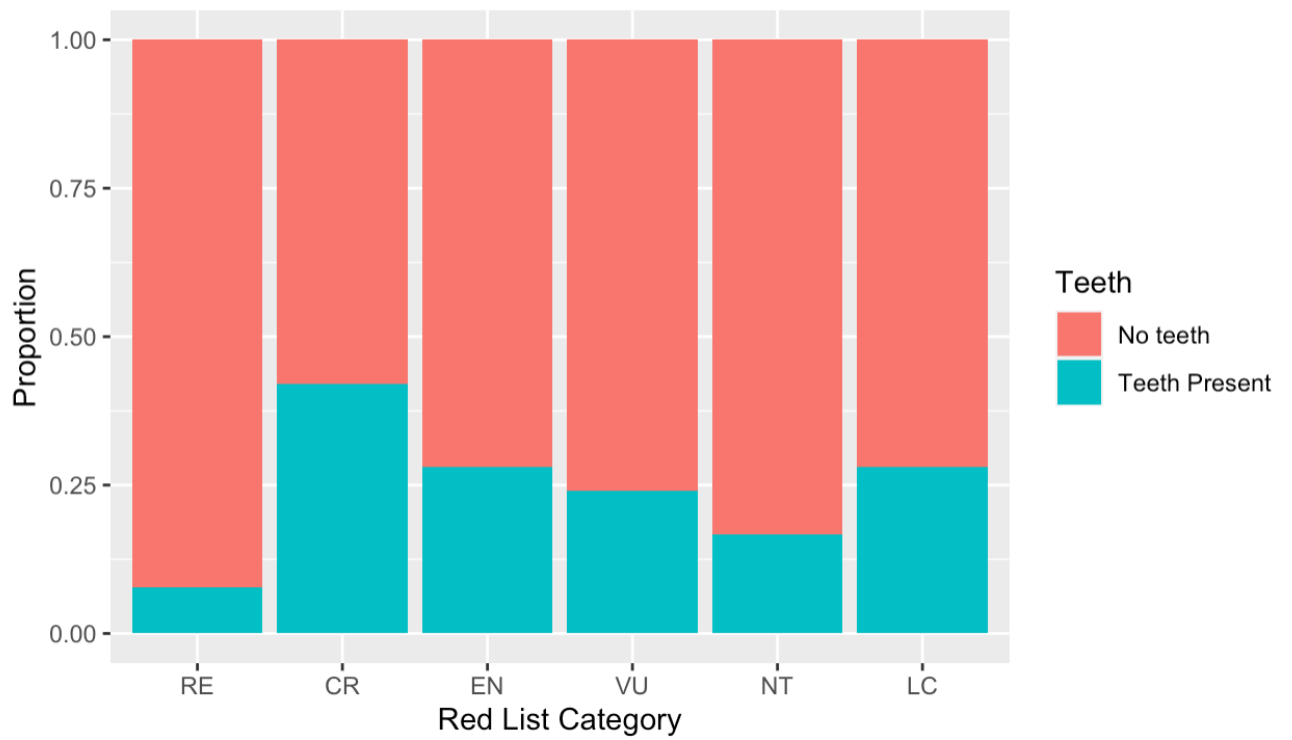
31



32

33 **Fig. S2** Stacked bar chart of the proportion of lobed leaves for the Irish flora divided into six

34 extinction risk categories

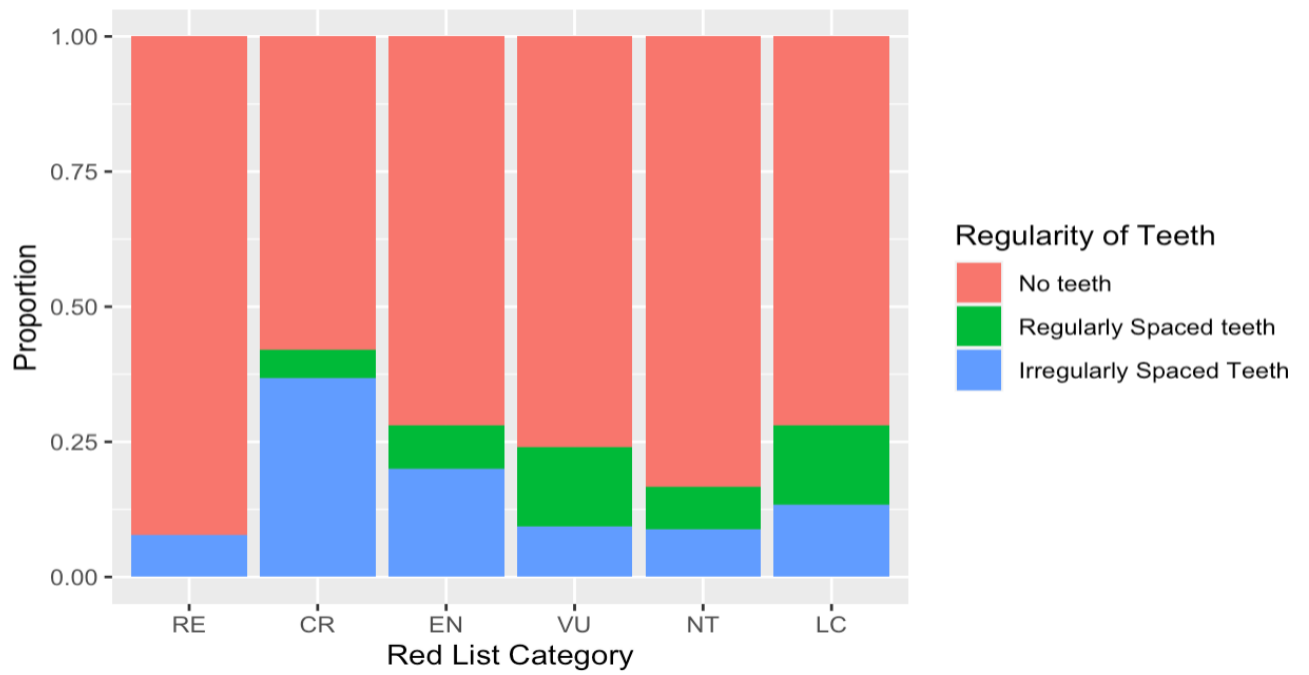


35

36 **Fig. S3** Stacked bar chart of the proportion of toothed leaves for the Irish flora divided into

37 six extinction risk categories

38



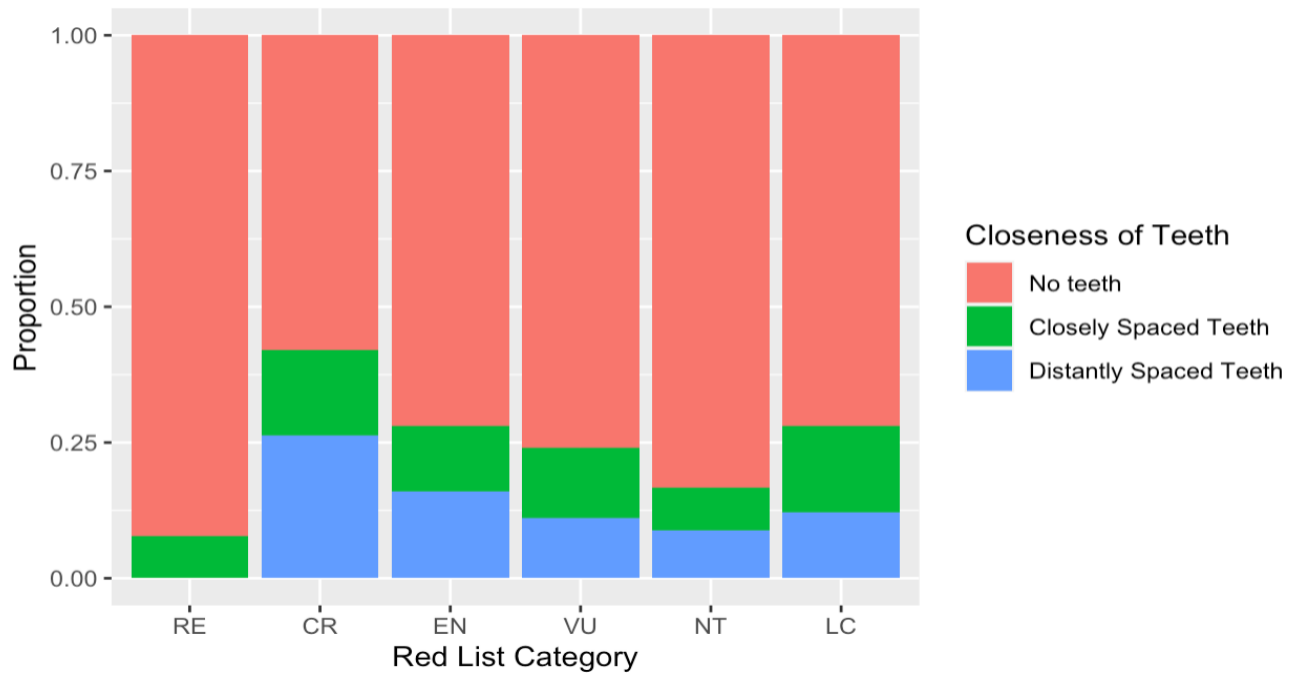
39

40 **Fig. S4** Stacked bar chart of the proportion of regularly spaced leaf teeth for the Irish flora

41 divided into six extinction risk categories

42

43



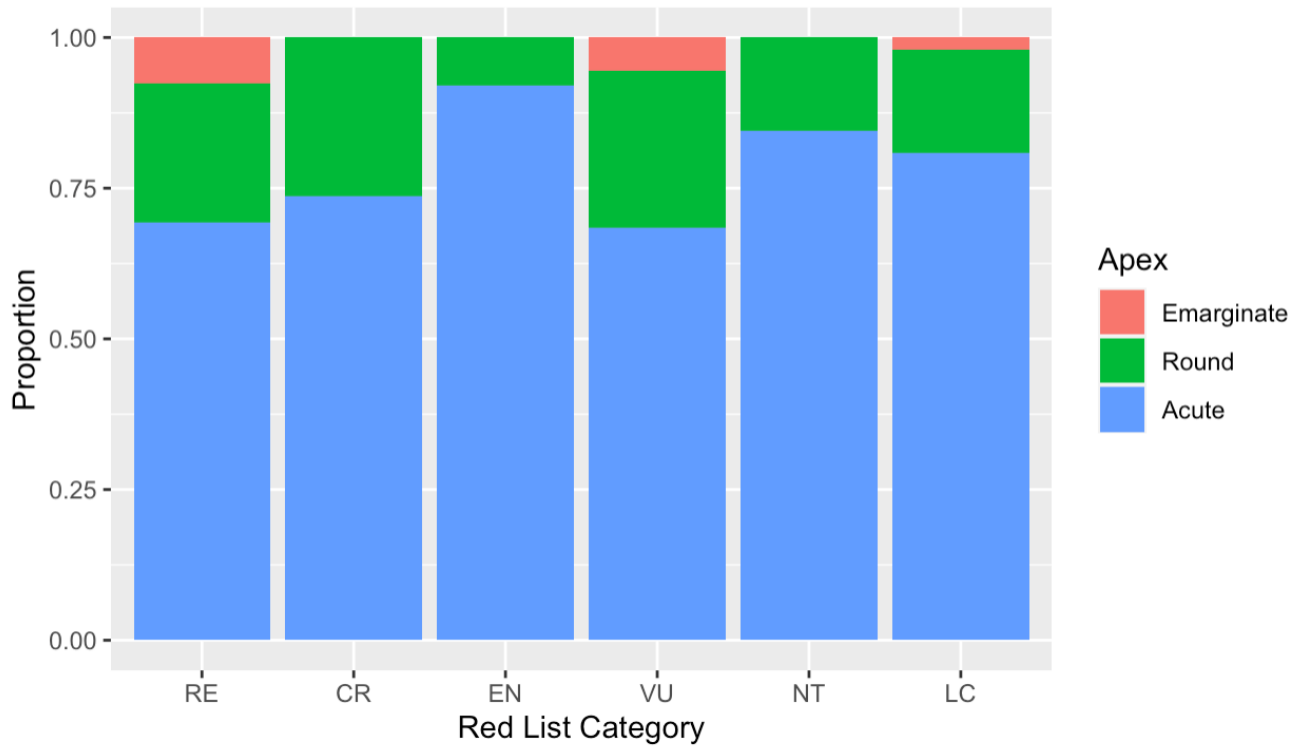
44

45 **Fig. S5** Stacked bar chart of the proportion of closely spaced leaf teeth for the Irish flora

46 divided into six extinction risk categories

47

48

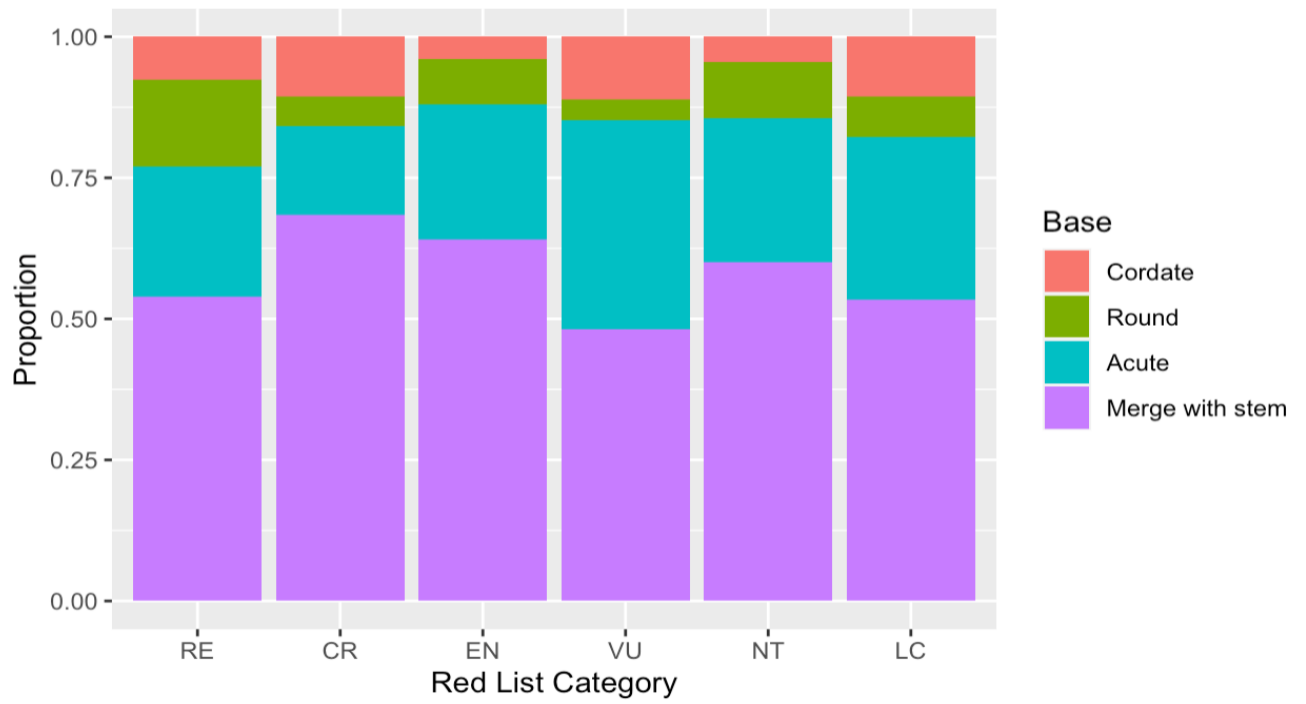


49

50 **Fig. S6** Stacked bar chart of the proportion of leaf apex for the Irish flora divided into six

51 extinction risk categories

52

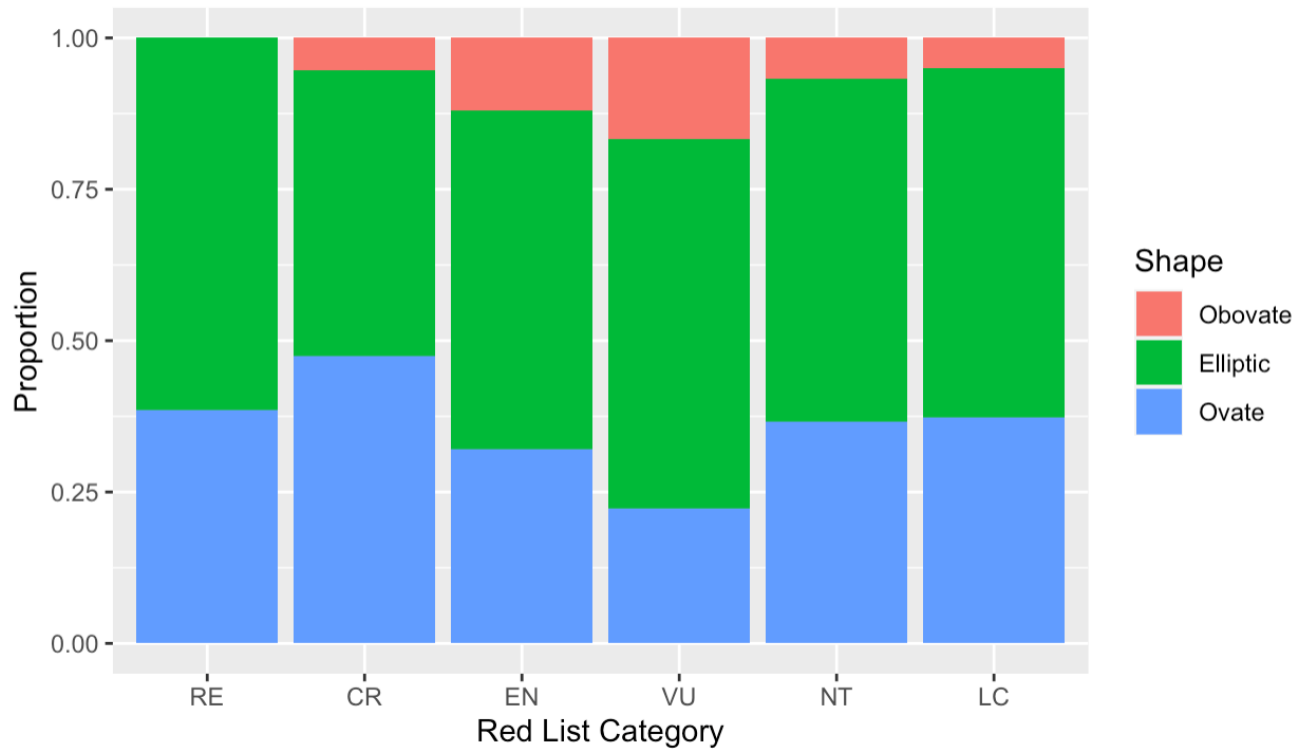


53

54 **Fig. S7** Stacked bar chart of the proportion of leaf base for the Irish flora divided into six

55 extinction risk categories

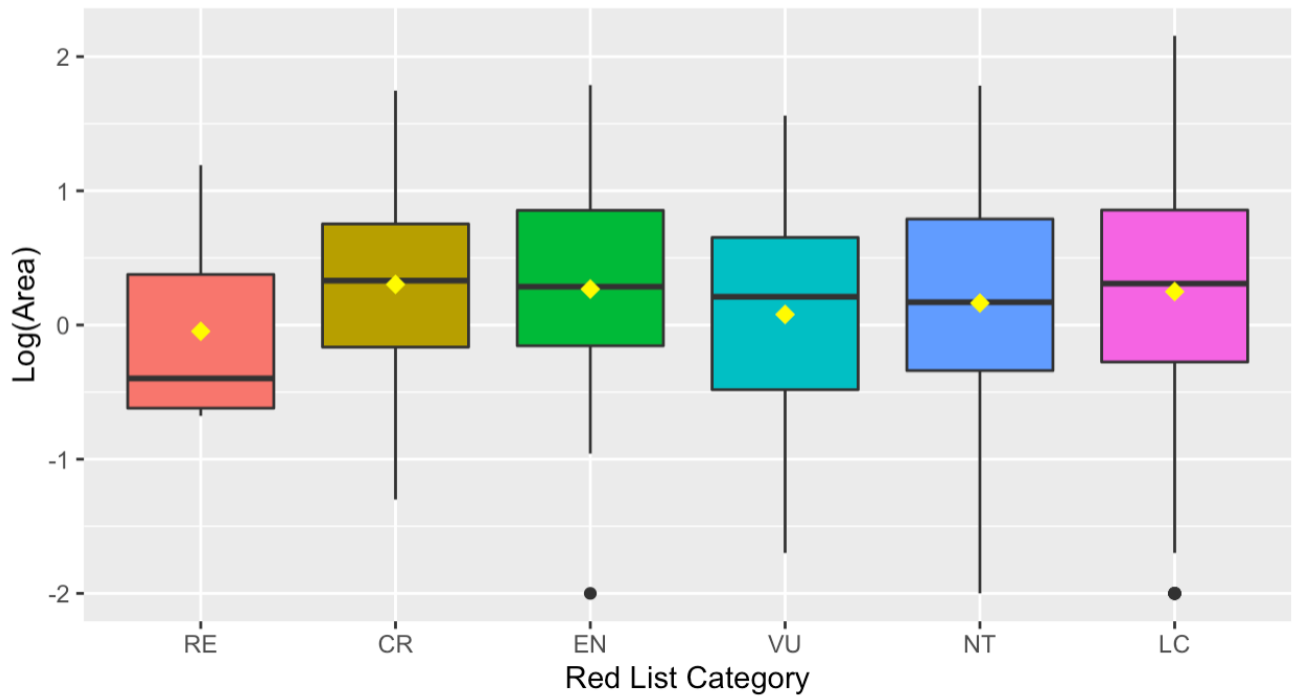
56



57

58 **Fig. S8** Stacked bar chart of the proportion of leaf shape for the Irish flora divided into six
 59 extinction risk categories

60



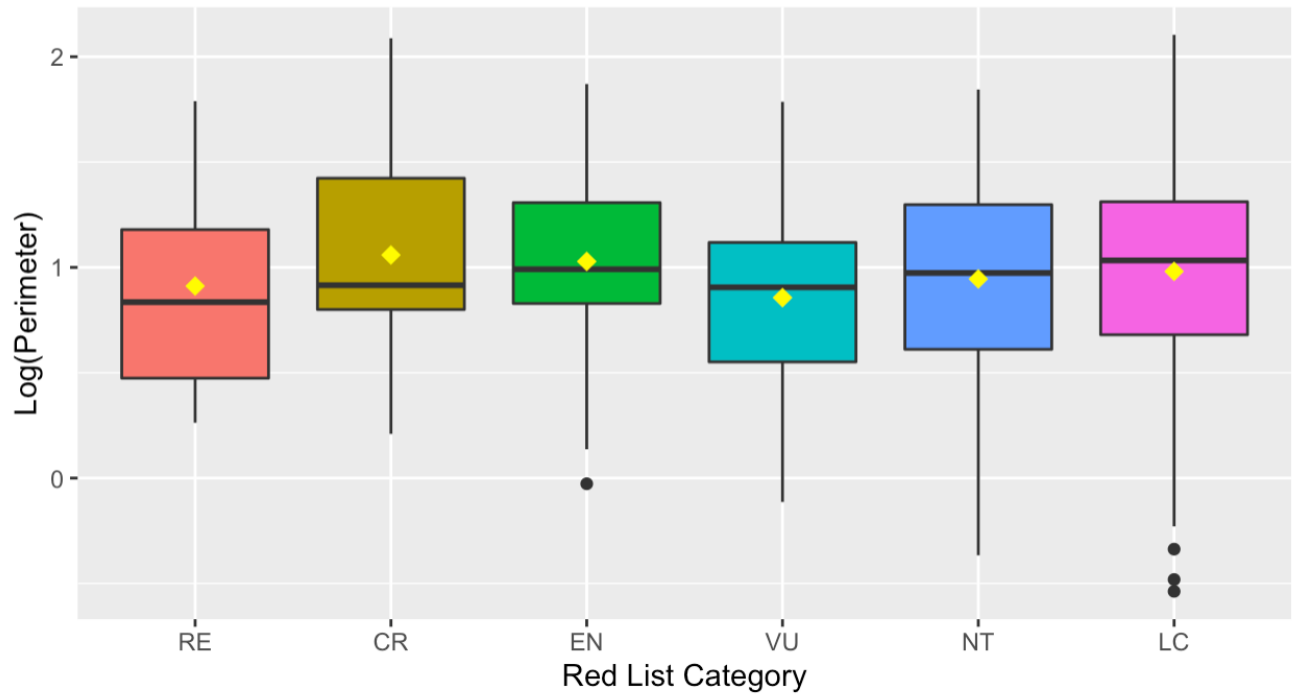
61

62 **Fig. S9** Boxplot of the log leaf area for the Irish flora divided into six extinction risk

63 categories (mean symbol superimposed, yellow diamond)

64

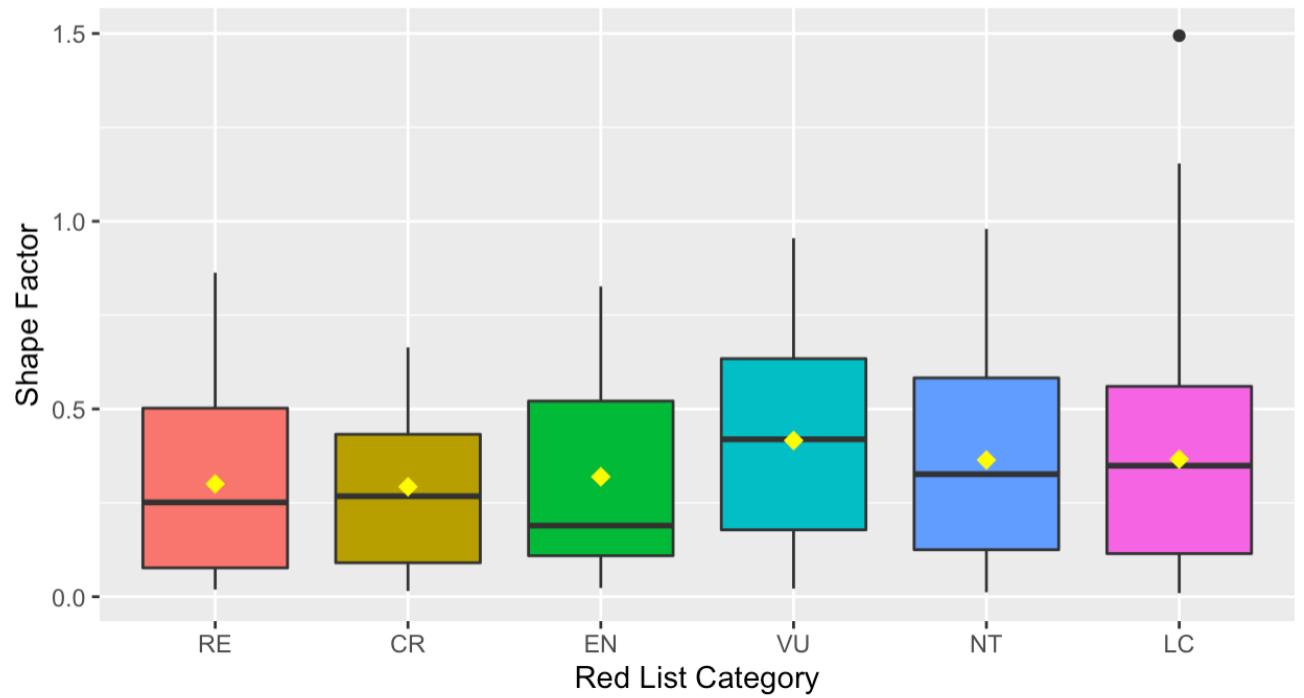
65



66

67 **Fig. S10** Boxplot of the log leaf perimeter for the Irish flora divided into six extinction risk
68 categories (mean symbol superimposed, yellow diamond)

69

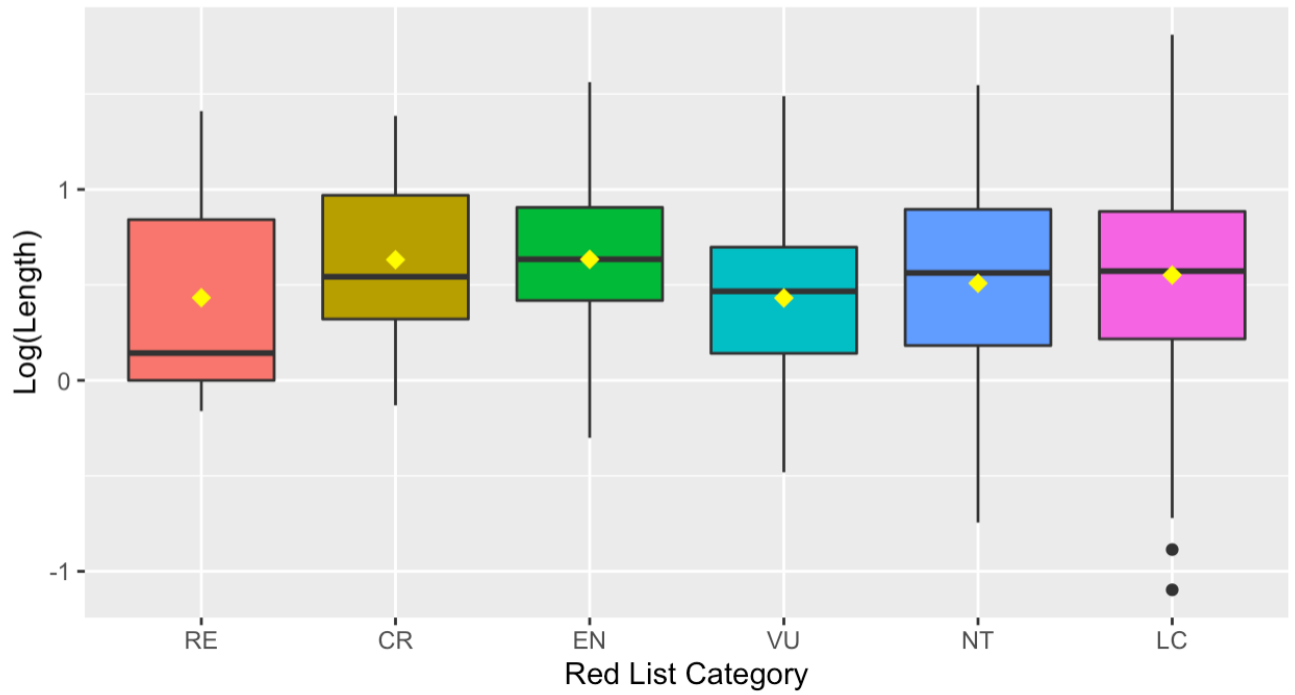


70

71 **Fig. S11** Boxplot of the leaf shape factor for the Irish flora divided into six extinction risk
72 categories (mean symbol superimposed, yellow diamond)

73

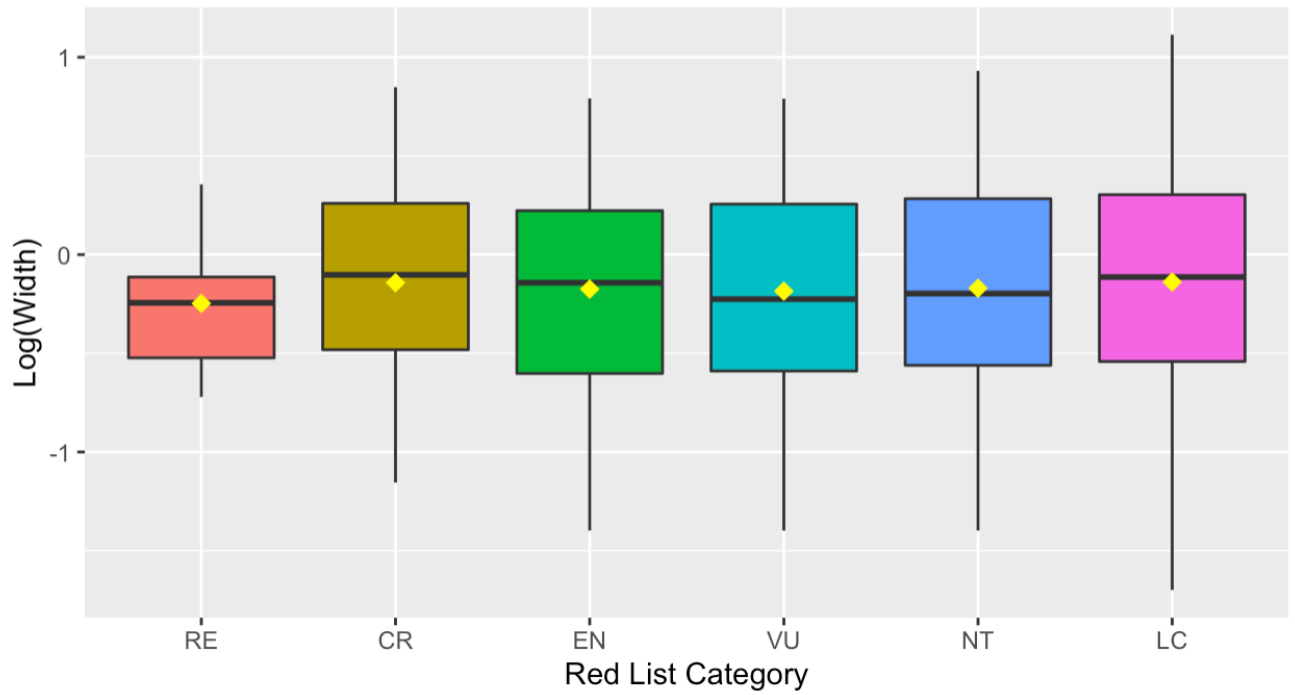
74



75

76 **Fig. S12** Boxplot of the log leaf length for the Irish flora divided into six extinction risk
77 categories (mean symbol superimposed, yellow diamond)

78



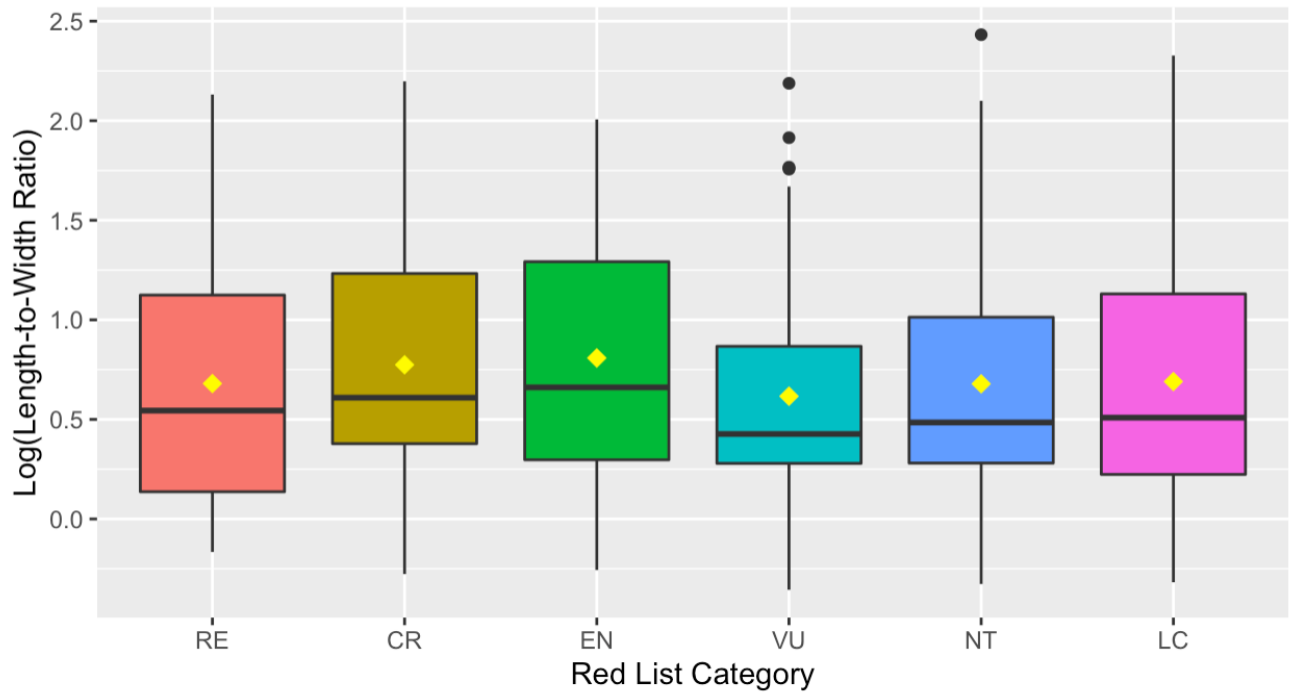
79

80 **Fig. S13** Boxplot of the log leaf width for the Irish flora divided into six extinction risk

81 categories (mean symbol superimposed, yellow diamond)

82

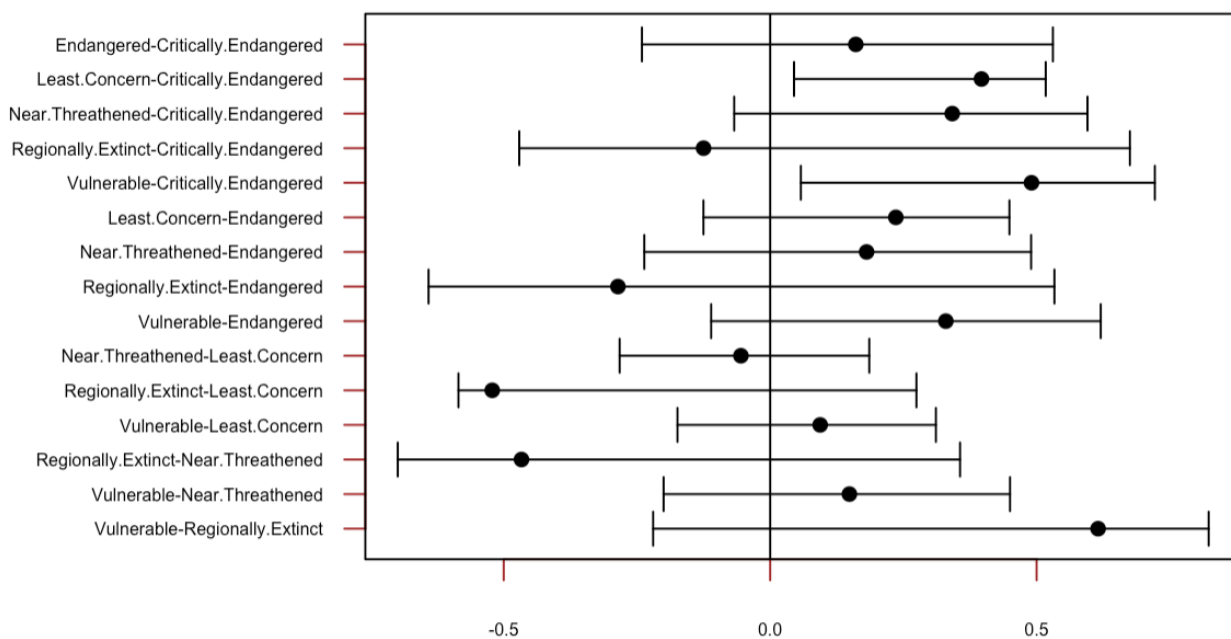
83



84

85 **Fig. S14** Boxplot of the log leaf length-to-width ratio for the Irish flora divided into six
86 extinction risk categories (mean symbol superimposed, yellow diamond)

Regularly spaced-irregularly spaced teeth



95% confidence intervals for differences in proportions

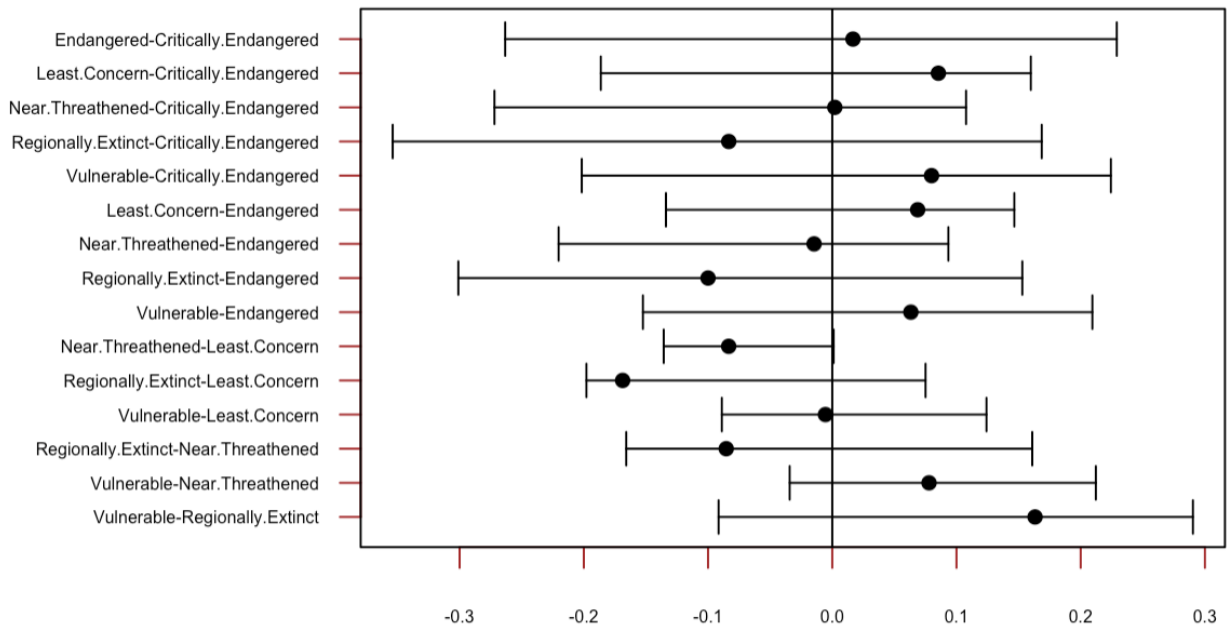
87

88 **Fig. S15** 95% confidence intervals for the difference in proportions of regularly and

89 irregularly spaced leaf teeth for each Red List category pair

90

Regularly spaced-no teeth



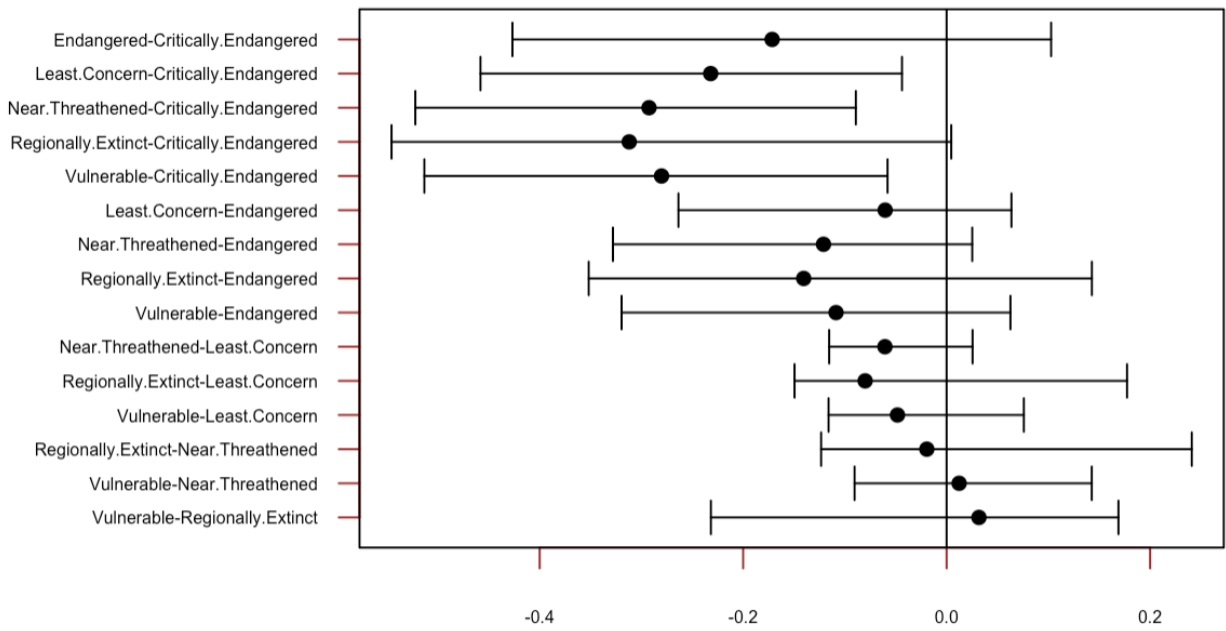
95% confidence intervals for differences in proportions

91

92 **Fig. S16** 95% confidence intervals for the difference in proportions of regularly spaced and

93 no leaf teeth for each Red List category pair

Irregularly spaced-no teeth



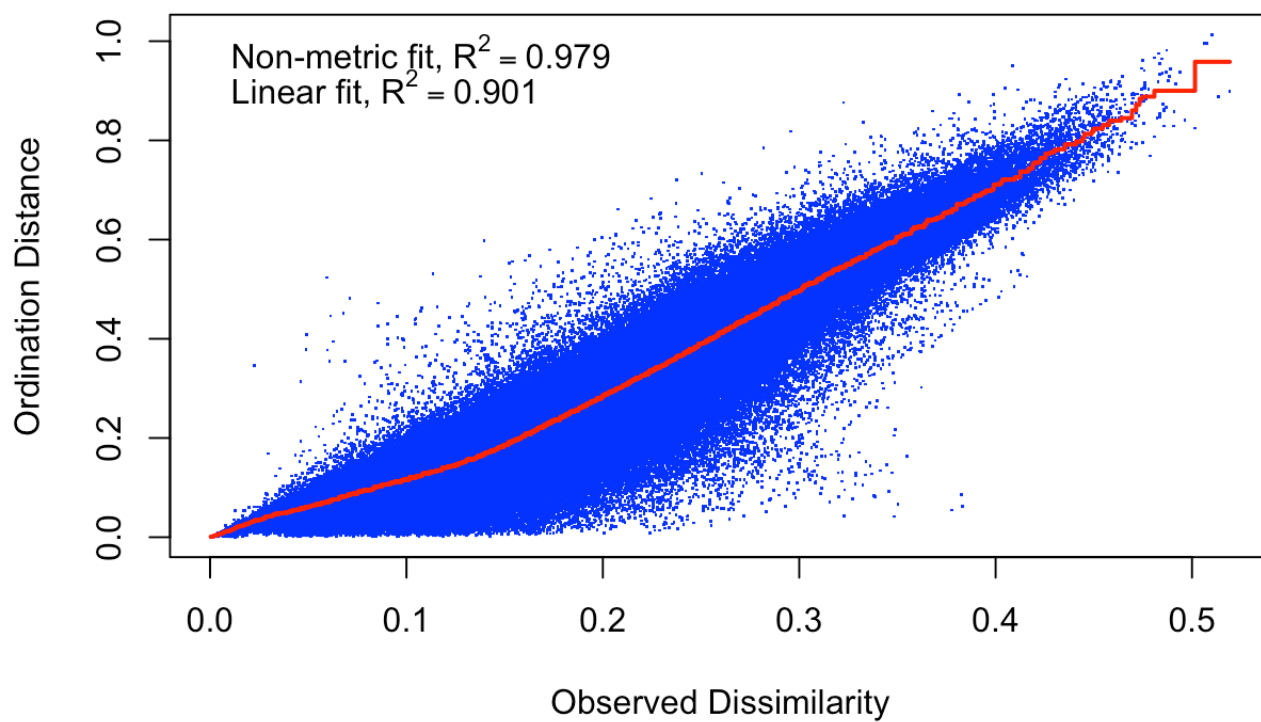
95% confidence intervals for differences in proportions

94

95 **Fig. S17** 95% confidence intervals for the difference in proportions of irregularly spaced and

96 no leaf teeth for each Red List category pair

97



98

99 **Fig. S18** Stressplot for the nMDS ordination of the Irish flora

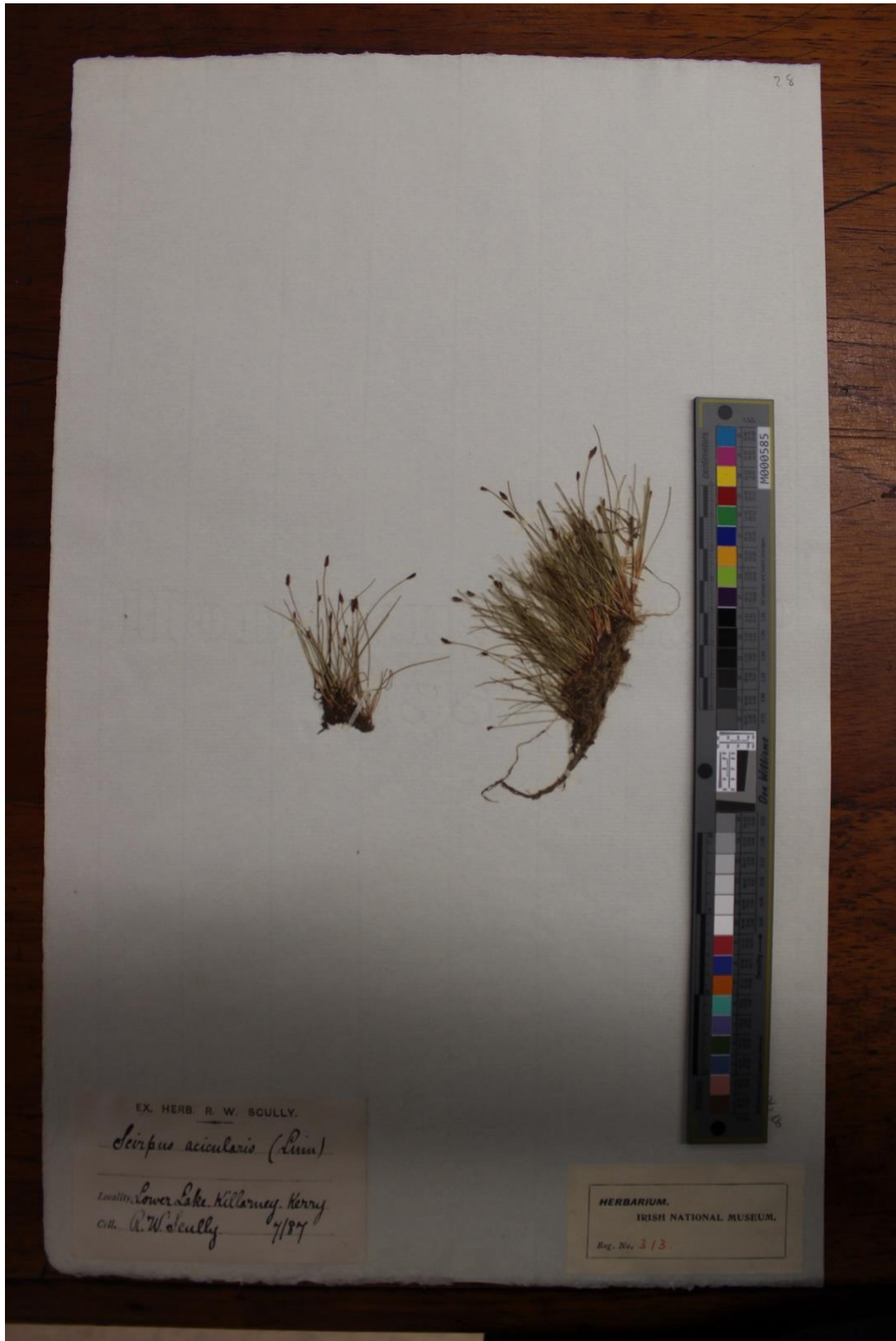
100



101

102 Fig. S19 *Carex lepidocarpa* subsp. *lepidocarpa* from the National Botanic Gardens, Glasnevin

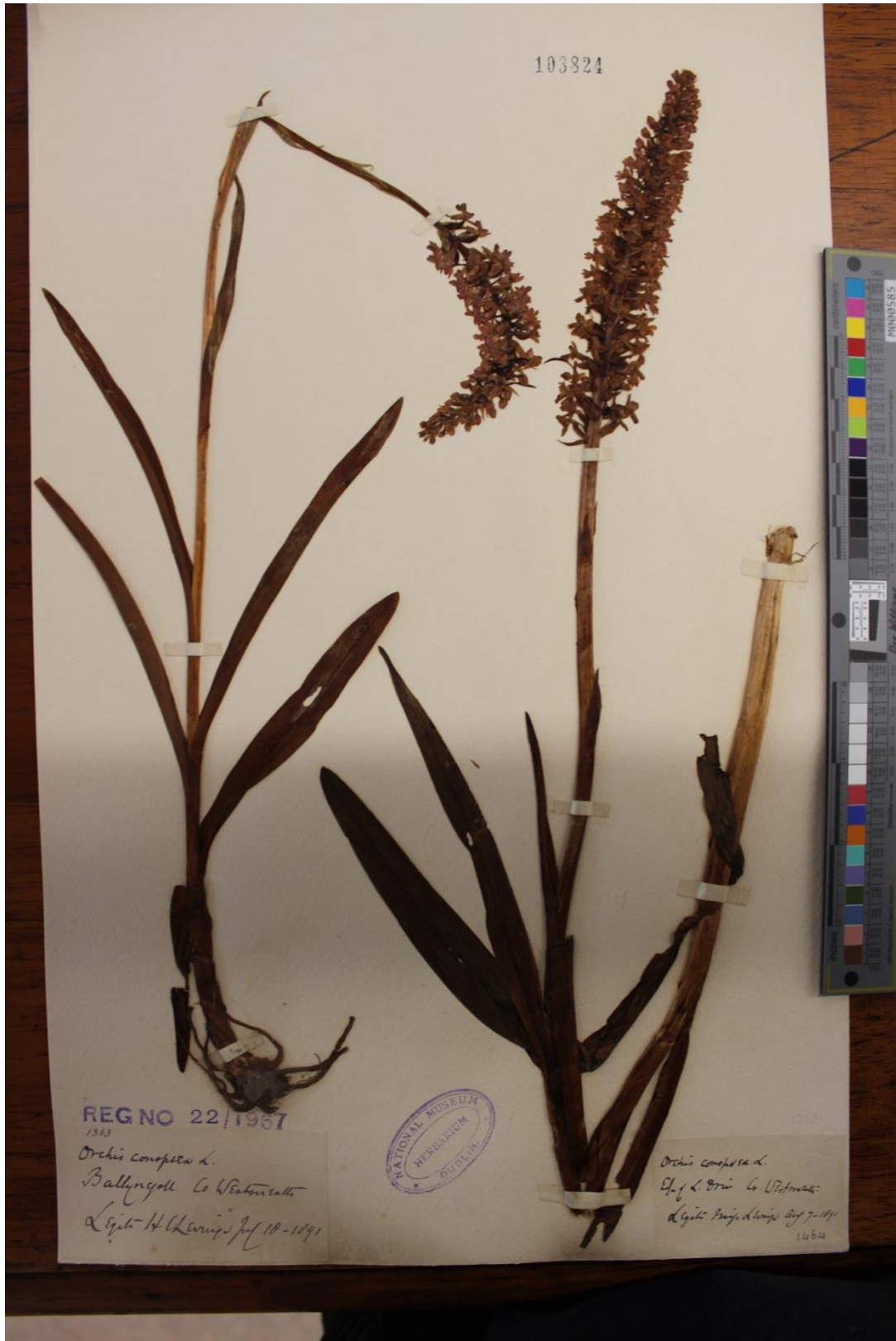
103



104

105 Fig. S20 *Eleocharis acicularis* from the National Botanic Gardens, Glasnevin

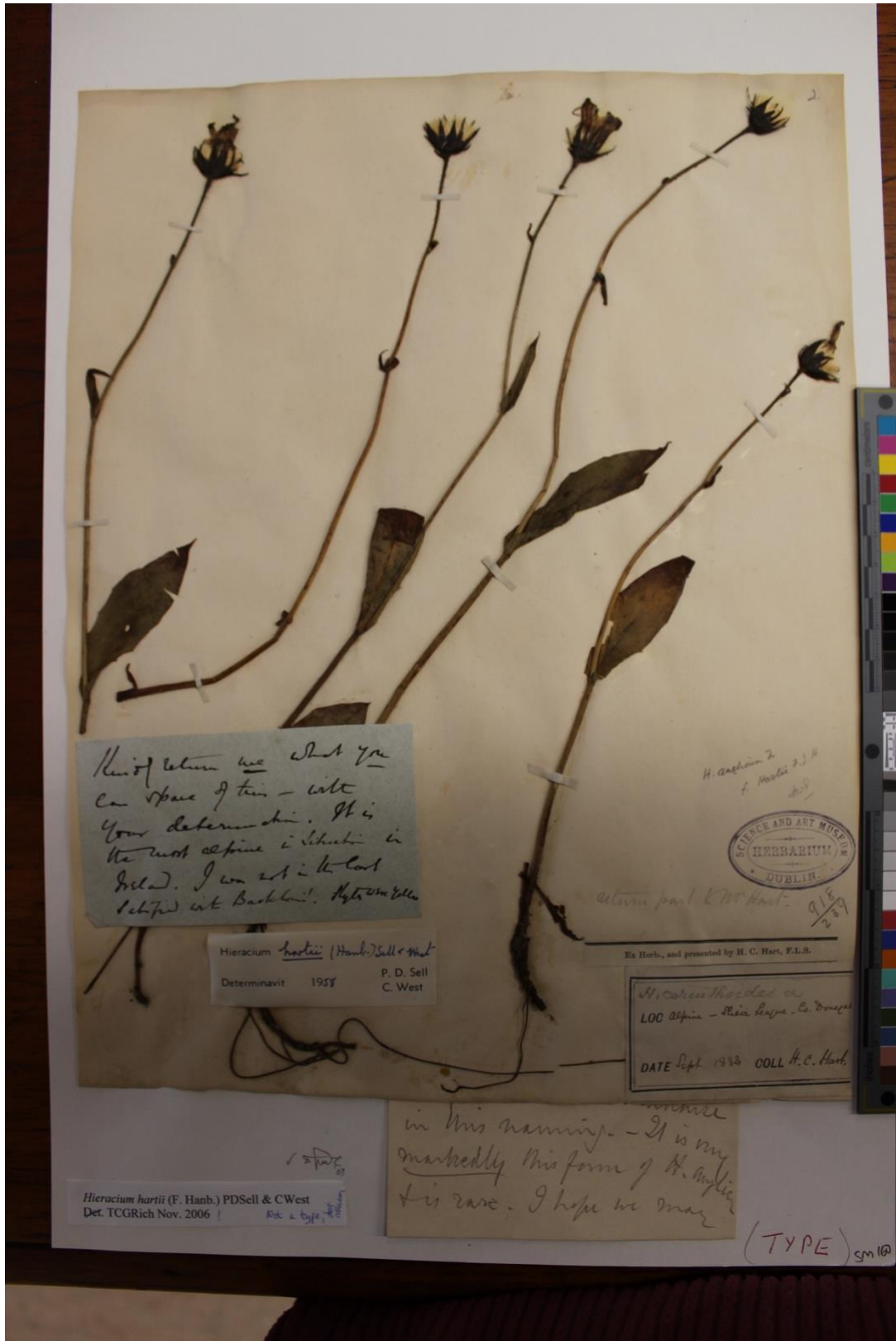
106



107

108 Fig. S21 *Gymnadenia borealis* from the National Botanic Gardens, Glasnevin

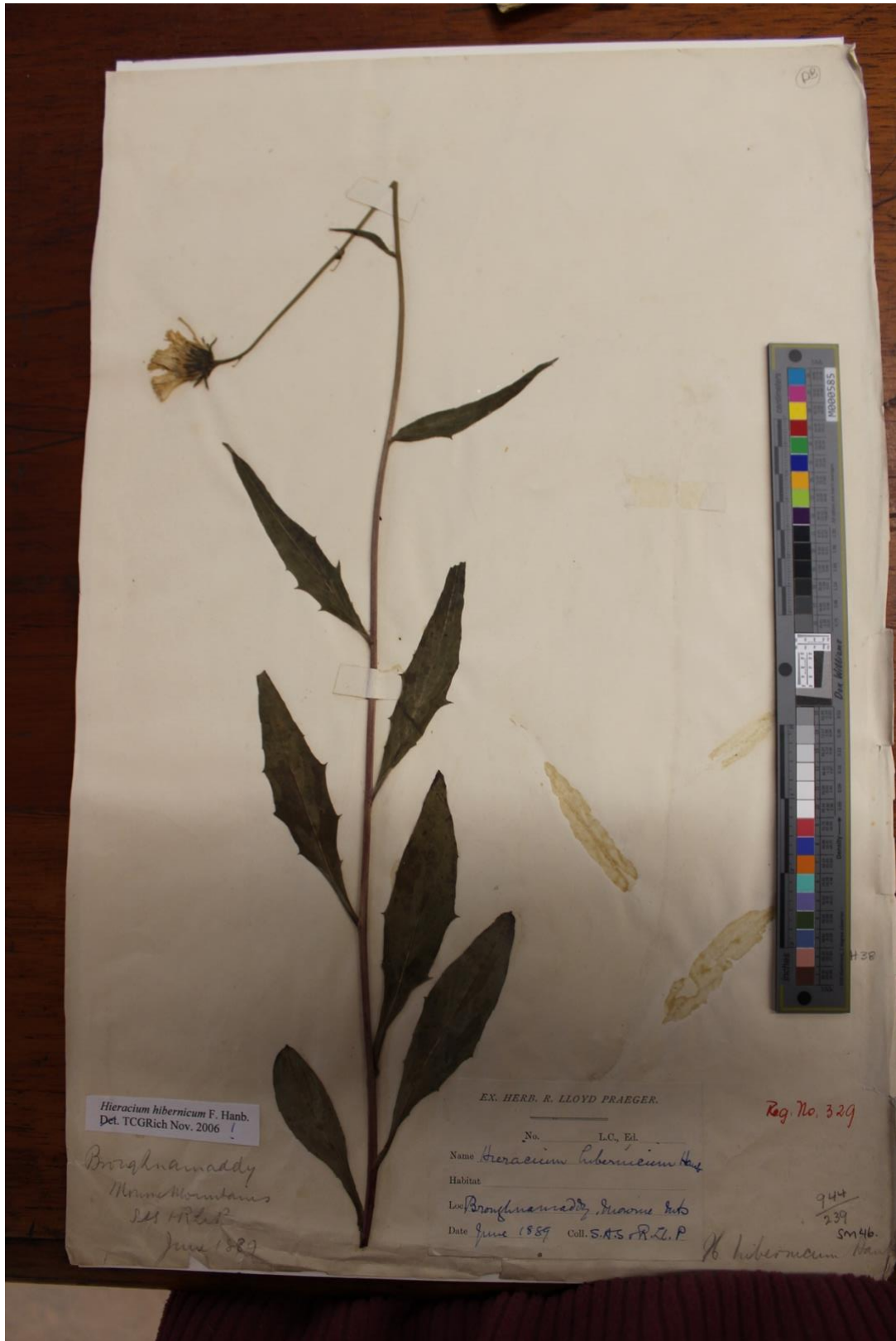
109



110

111 Fig. S22 *Hieracium hartii* from the National Botanic Gardens, Glasnevin

112



113

114 Fig. S23 *Hieracium hibernicum* from the National Botanic Gardens, Glasnevin

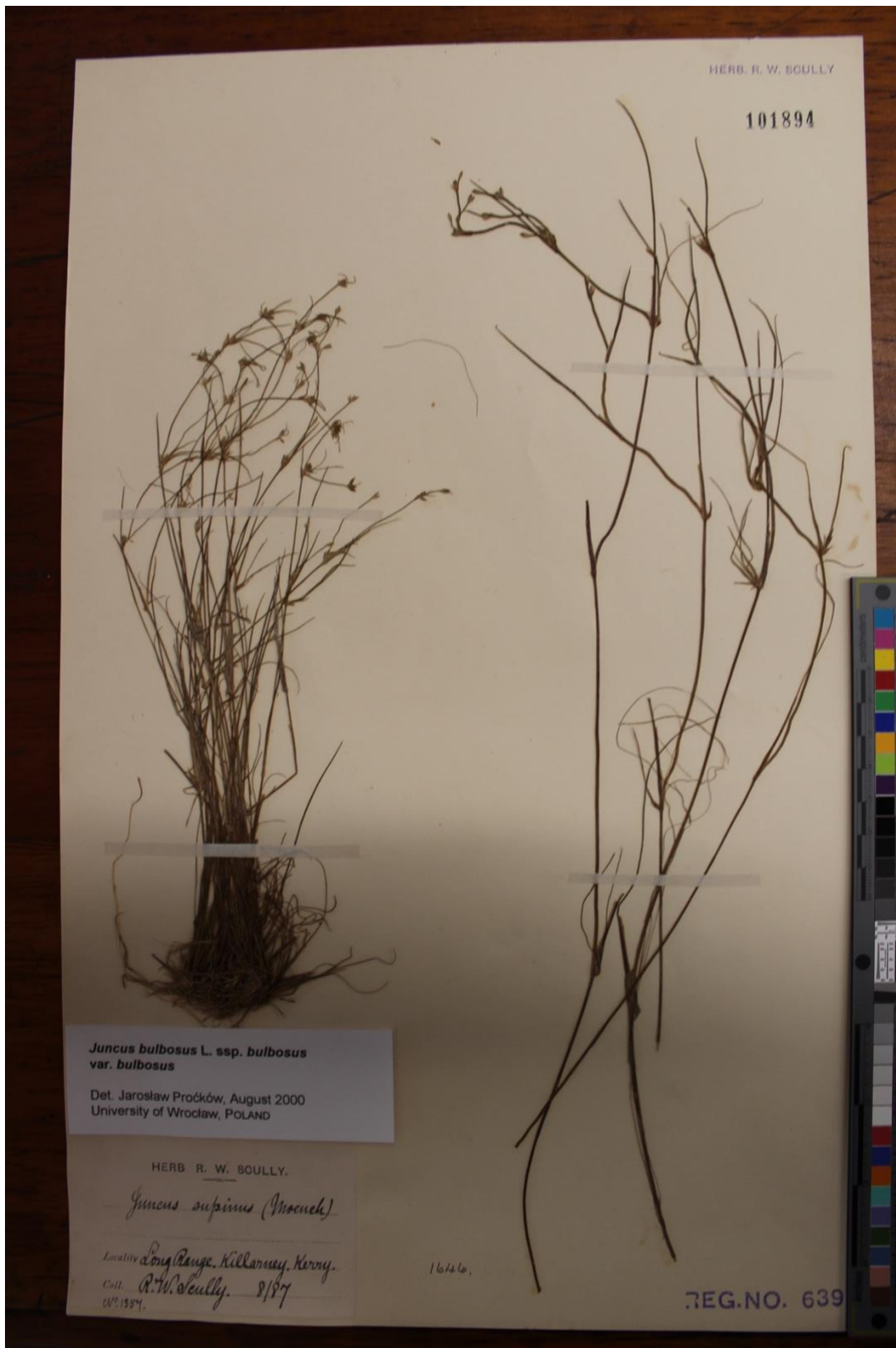
115



116

117 **Fig. S24** *Hieracium sparsifrons* from the National Botanic Gardens, Glasnevin

118



119

120 Fig. S25 *Juncus bulbosus* subsp. *bulbosus* from the National Botanic Gardens, Glasnevin

121

003666



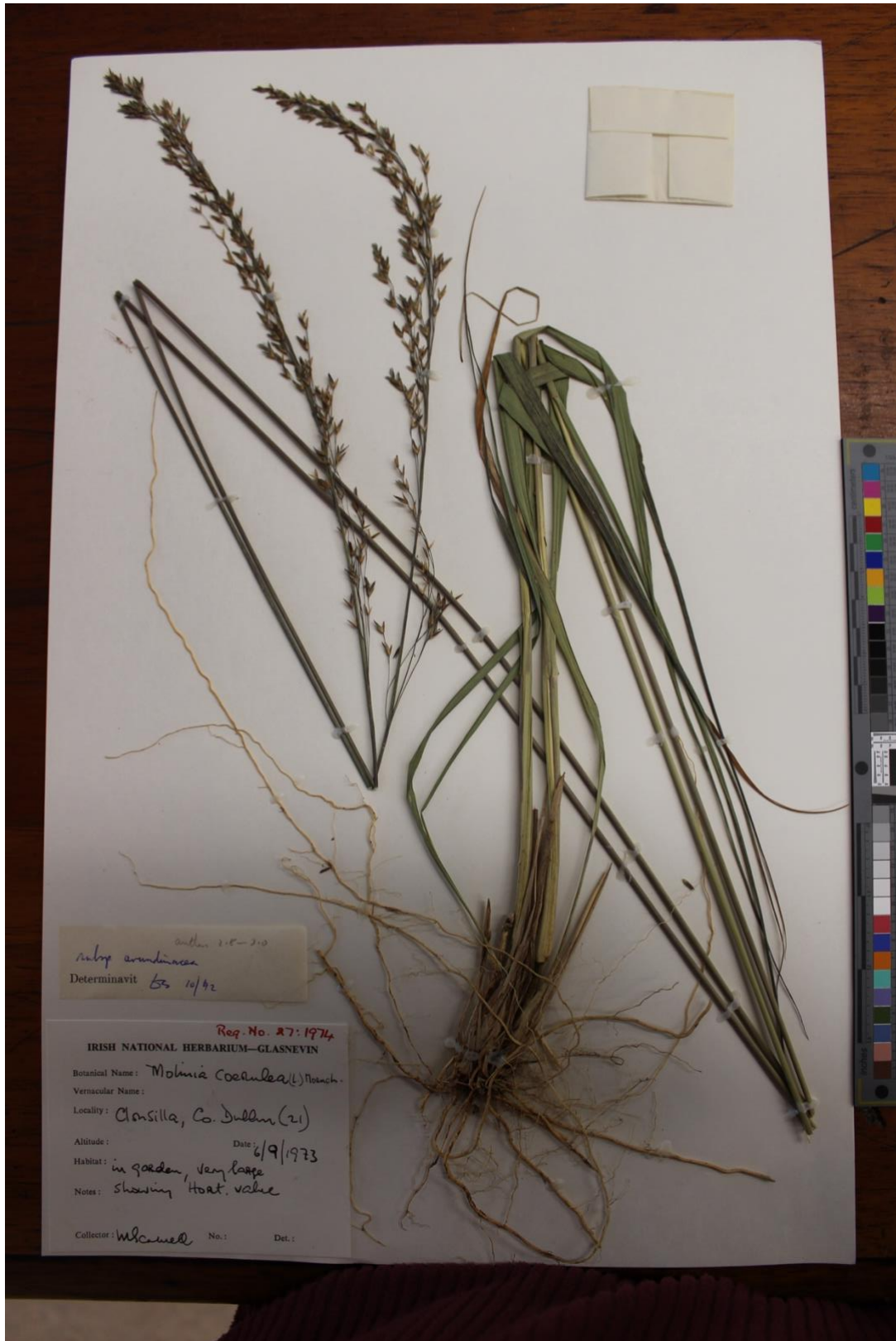
71:1983
IRISH NATIONAL HERBARIUM—GLASNEVIN
Botanical Name: *Limonium recurvum* C.E. Salmon
Vernacular Name: Subsp. *portlandicum* Inghouille
var. *kerryense* Inghouille.
Locality: Banna Strand, Co. Kerry
Altitude: H2 Date: July 1980
Habitat: between dunes and salt marsh:
Notes: ISOTYPE: Code H2BS
Cult. Leicester Sept 1981
Collector: M.J. Inghouille No.: Det.:

LEICESTER UNIVERSITY HERBARIUM (LTR)
FLORA OF THE BRITISH ISLES
LIMONIUM BINERVOSUM (G.E. Sa.) C.E. Salmon
AGGREGATE
L. RECURVUM C.E. Salmon
subsp. PORTLANDICUM Inghouille
var. KERRYENSE Inghouille
ISOTYPE
Between the dunes and salt marsh at Banna
Strand, N. Kerry, v.c.H2; code H2BS.
Coll. M.J. Inghouille July 1980
Cult. at Leicester until September 1981

122

123 Fig. S26 *Limonium recurvum* subsp. *portlandicum* from the National Botanic Gardens,

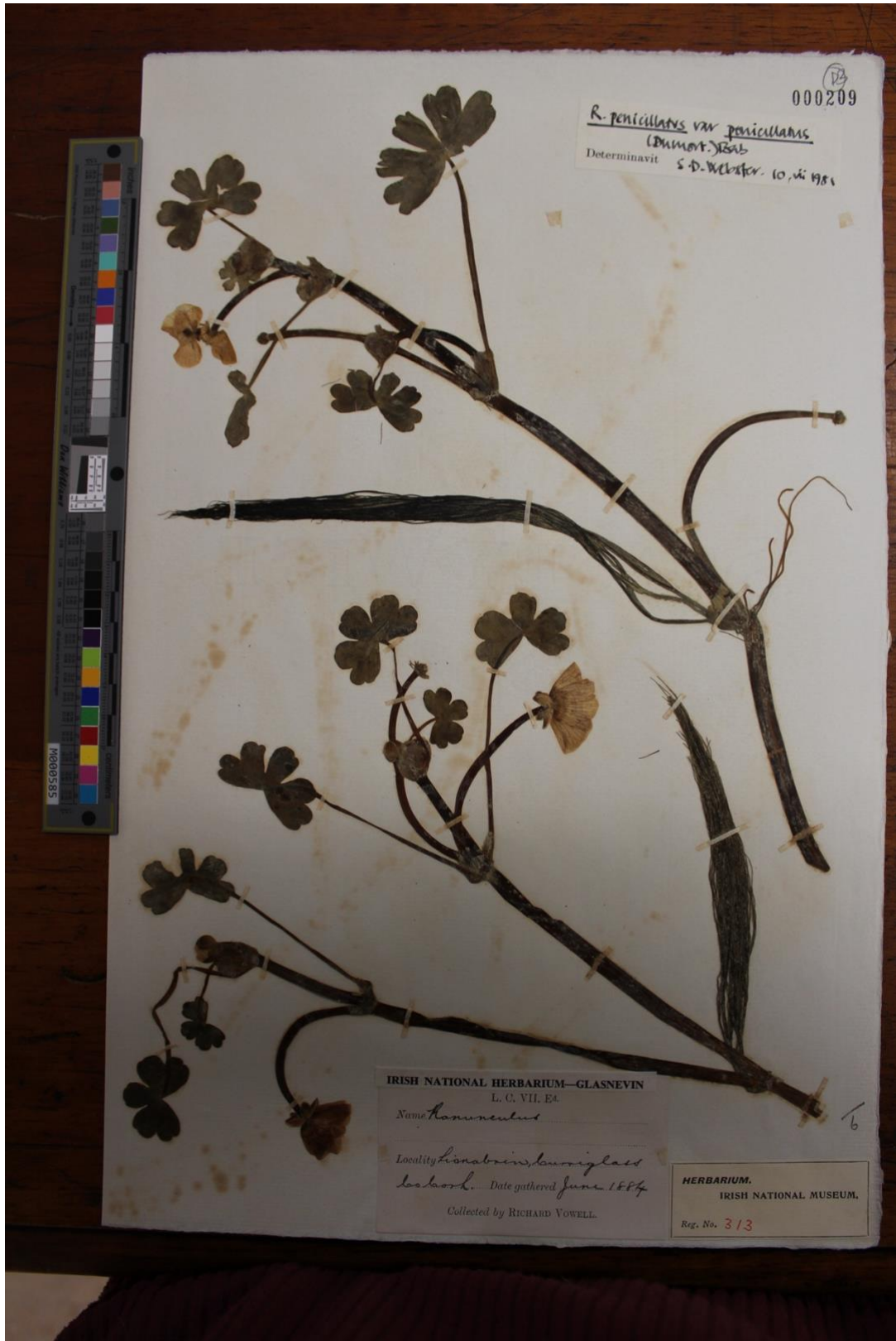
124 Glasnevin



125

126 **Fig. S27** *Molinia caerulea* subsp. *arundinacea* from the National Botanic Gardens, Glasnevin

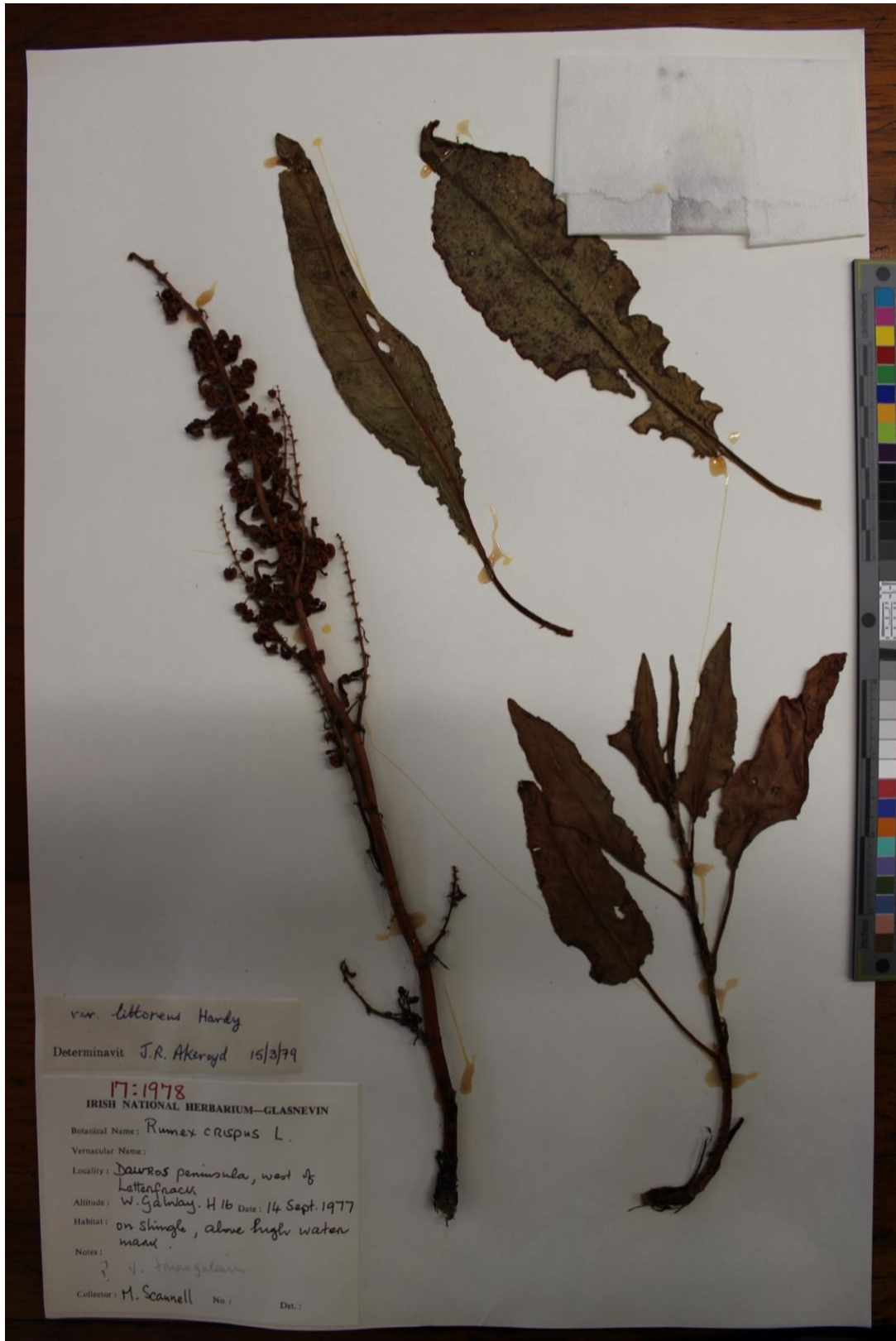
127



128

129 Fig. S28 *Ranunculus penicillatus* subsp. *penicillatus* from the National Botanic Gardens,

130 Glasnevin



131

132 Fig. S29 *Rumex crispus* subsp. *littoreus* from the National Botanic Gardens, Glasnevin

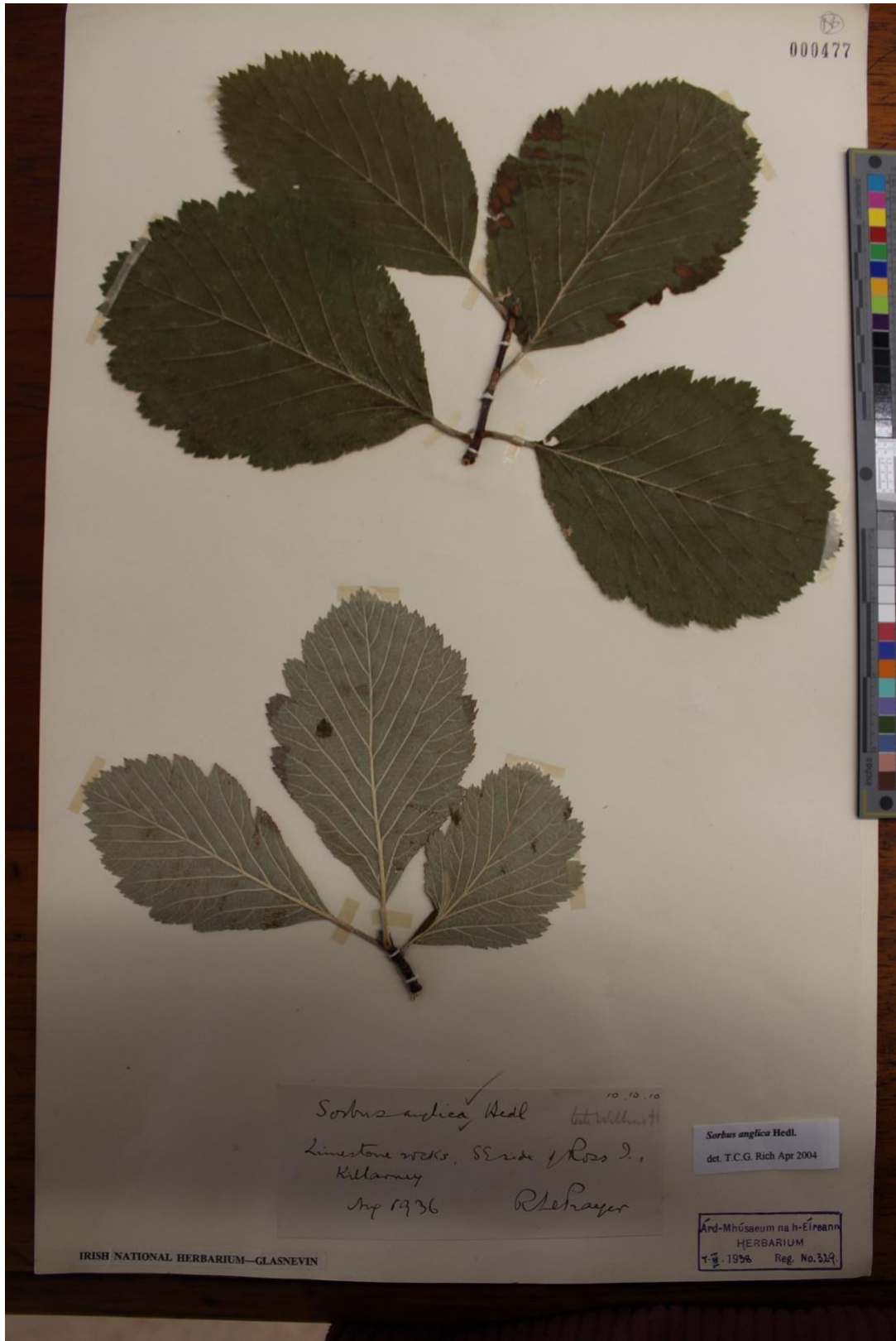
133



134

135 Fig. S30 *Rumex crispus* subsp. *uliginosus* from the National Botanic Gardens, Glasnevin

136



137

138 Fig. S31 *Sorbus anglica* from the National Botanic Gardens, Glasnevin

139



140

141 **Fig. S32** *Sorbus scannelliana* from the National Botanic Gardens, Glasnevin