

Supplementary material

Preparation of cellulose-rich membranes from wood: Effect of wood pretreatment process on membrane performance

Anastasiia Lopatina¹, Ikenna Anugwom², Mohammadamin Esmaeili¹, Liisa Puro¹, Tiina Virtanen¹, Mika Mänttari¹, Mari Kallioinen¹

¹ Department of Separation Science, LUT School of Engineering Science, LUT University, P.O. Box 20, FI-53851 Lappeenranta, Finland;

² LUT Re-Source Research Platform, LUT University, P.O. Box 20, FI-53851 Lappeenranta, Finland.

Corresponding author: Anastasiia Lopatina (Anastasiia.Lopatina@lut.fi)

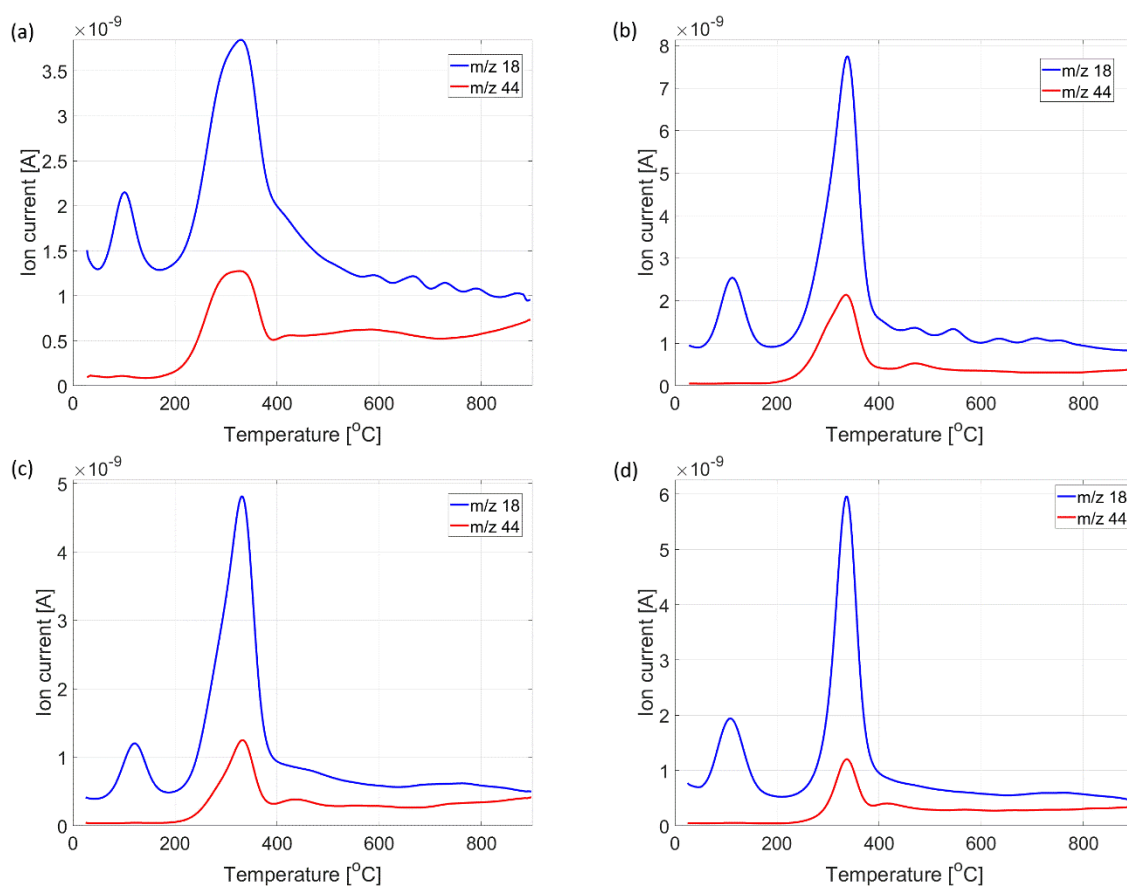


Fig S1 Evolution of H_2O (m/z 18) and CO_2 (m/z 44) for membrane samples prepared from untreated birch (a), DES treated birch (b), DES treated and bleached birch (c), and alkaline-treated bleached DES-treated birch (d)

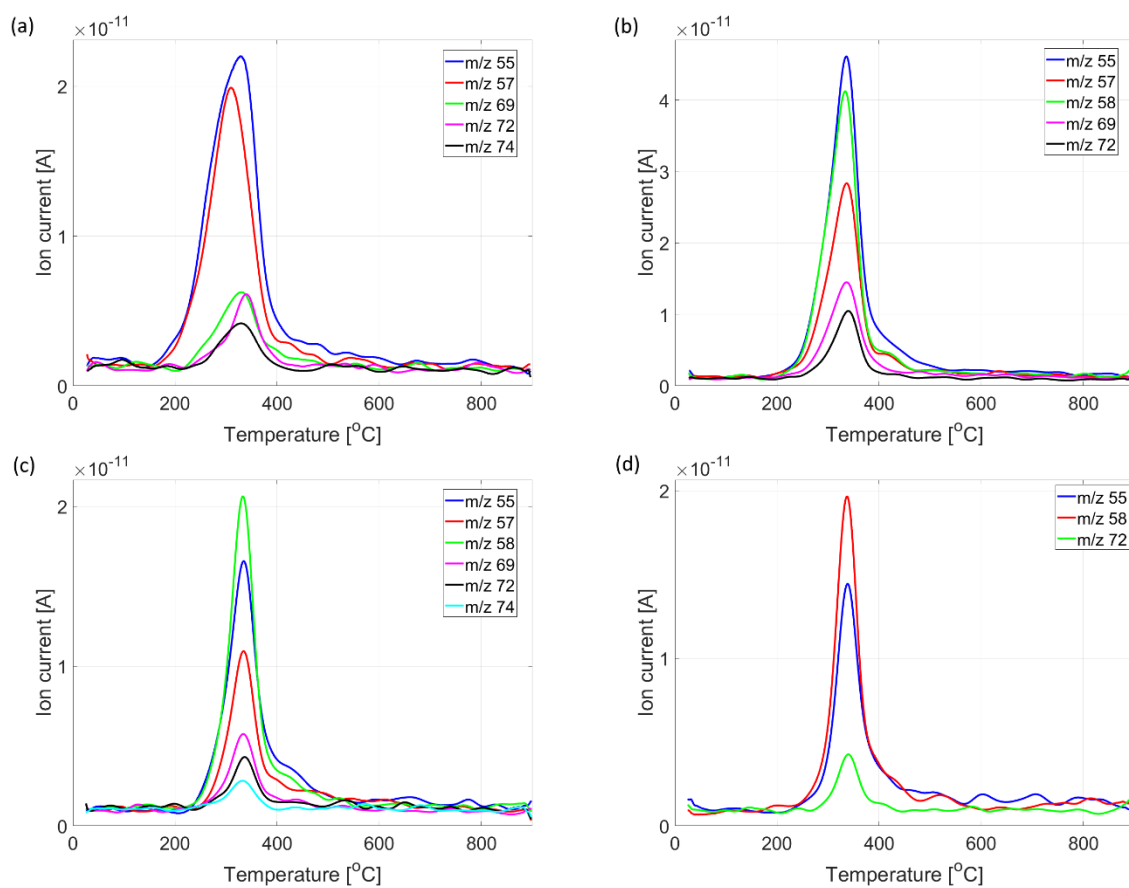


Fig S2 Selected MS ion intensity curves of membrane samples prepared from untreated birch (a), DES treated birch (b), DES treated and bleached birch (c), and alkaline-treated bleached DES-treated birch (d)

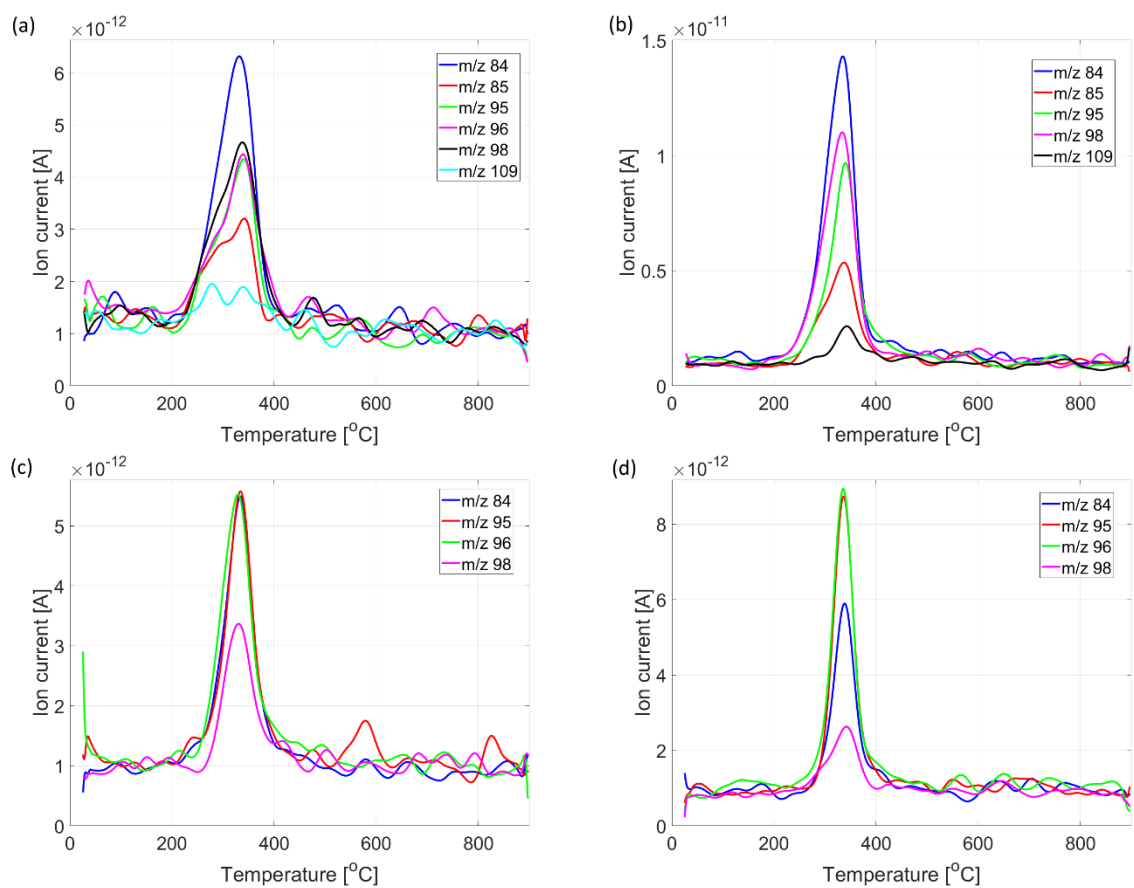


Fig S3 Selected MS ion intensity curves of membrane samples prepared from untreated birch (a), DES treated birch (b), DES treated and bleached birch (c), and alkaline-treated bleached DES-treated birch (d)