

Asma'a A. Al-Ekrish (corresponding author), BDS, MDS, Cert. Diag. Sci.

King Saud University, Department of Oral Medicine and Diagnostic Sciences

E-mail: aalekrish@ksu.edu.sa; asma.alekrish@gmail.com

Sara A. Alfadda, BDS, MSc, PhD, FRCD(C),

Wadea Ameen, MSC, PhD candidate

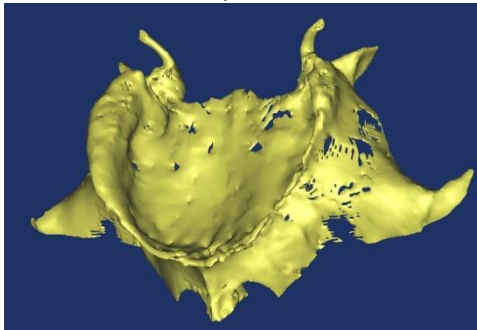
Romed Hörmann, Research Assistant

Wolfgang Puelacher, MD, DMD

Gerlig Widmann, MD, EBIR

Electronic supplementary material 1: The CAD models obtained by the reference protocol and the different combinations of test protocols (TP) and reconstruction techniques.

Reference Model (Reference Dose FBP)



Filtered Backprojection

ASIR 50

ASIR 100

MBIR

