

Unravelling the effect of data augmentation transformations in polyp segmentation

International Journal of Computer Assisted Radiology and Surgery

Luisa F. Sánchez-Peralta*, Artzai Picón, Francisco M. Sánchez-Margallo, J. Blas Pagador

* Jesús Usón Minimally Invasive Surgery Centre. Cáceres (Spain)

<lfsanchez@ccmijesususon.com>

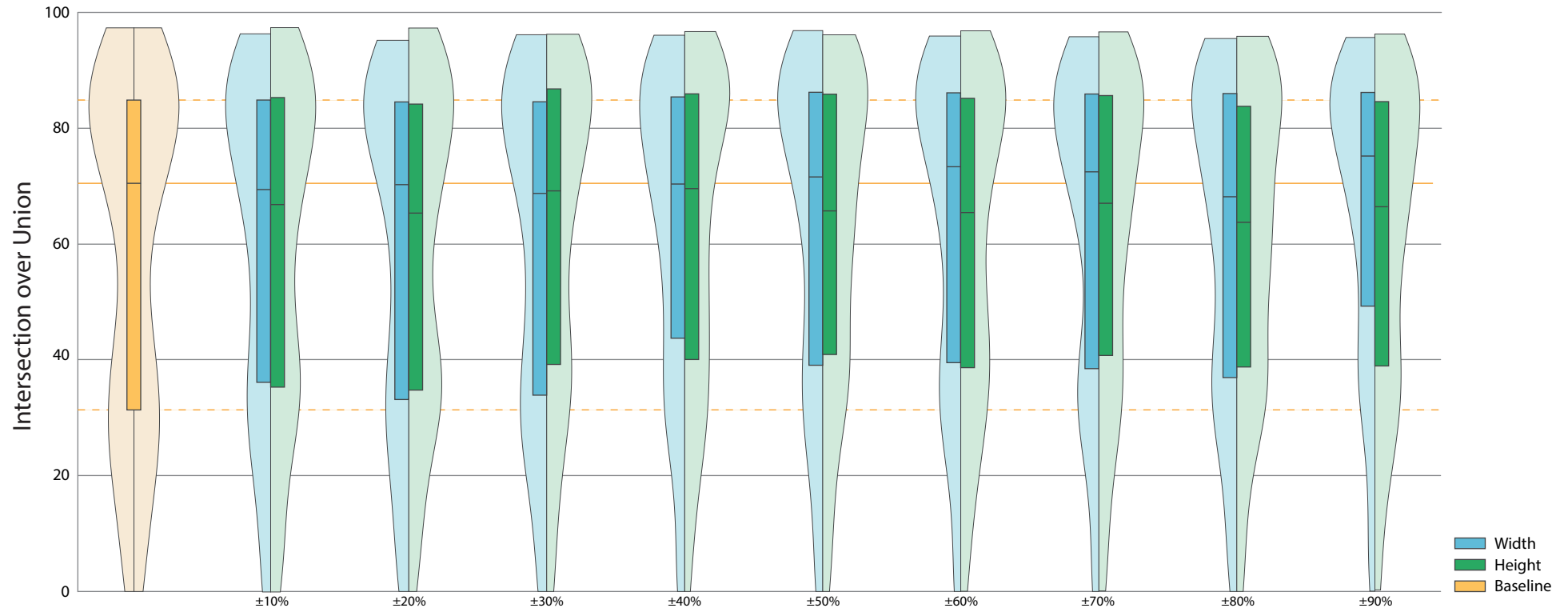


Fig S1.1. Results for width and height shifts for CVC-EndoSceneStill. Baseline is included. Its median and quartiles are prolonged on the background for reference.

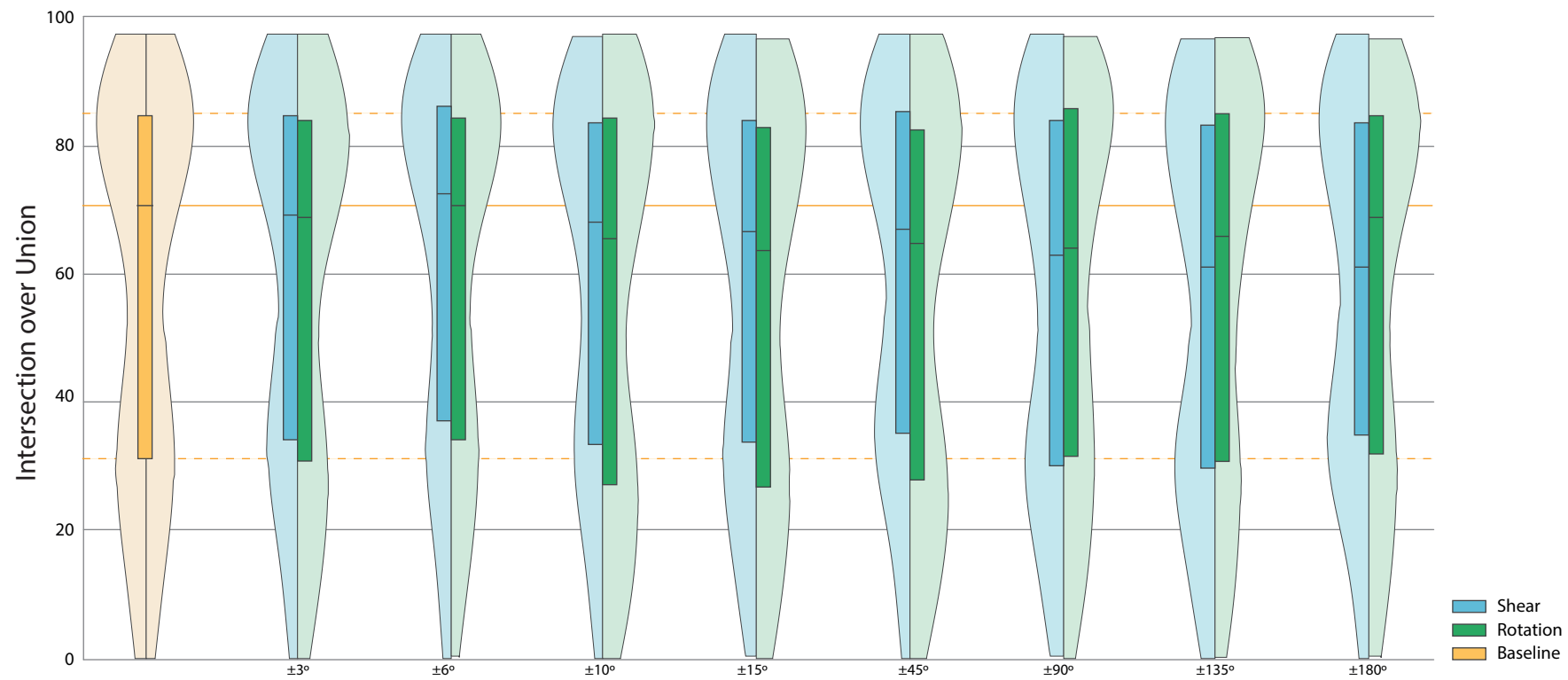


Fig S1.2. Results for rotation and shear for CVC-EndoSceneStill. Baseline is included. Its median and quartiles are prolonged on the background for reference.

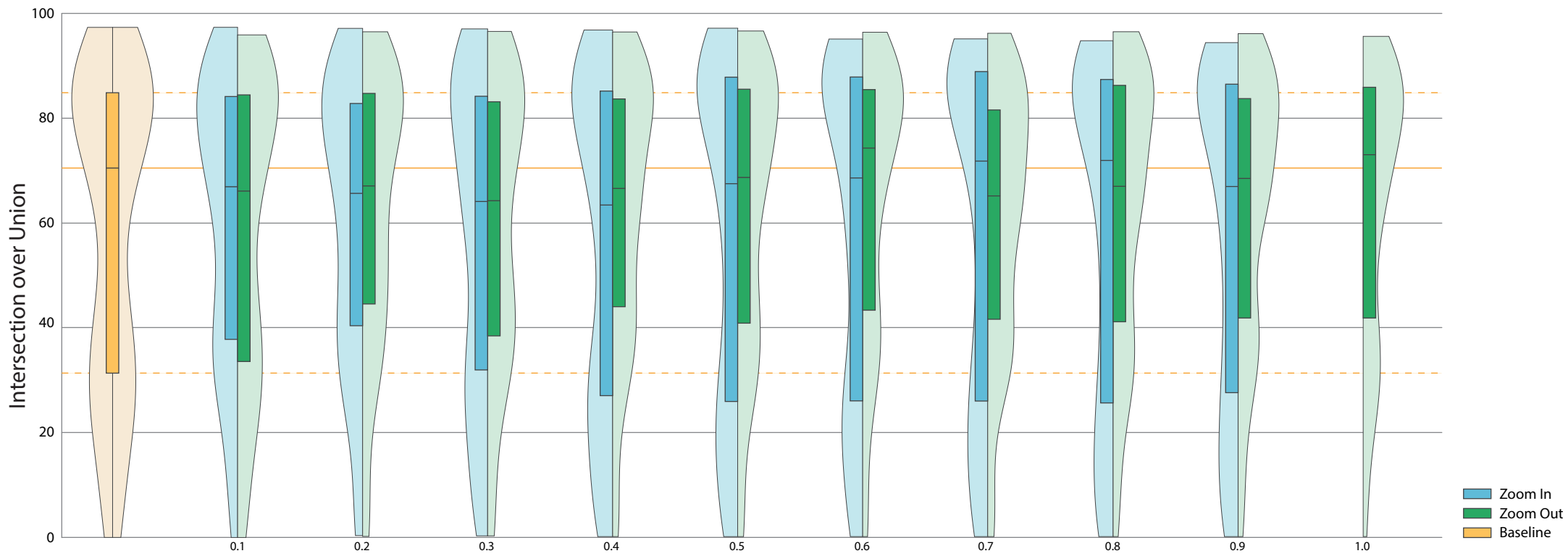


Fig S1.3. Results for zoom in and out for CVC-EndoSceneStill. Baseline is included. Its median and quartiles are prolonged on the background for reference.

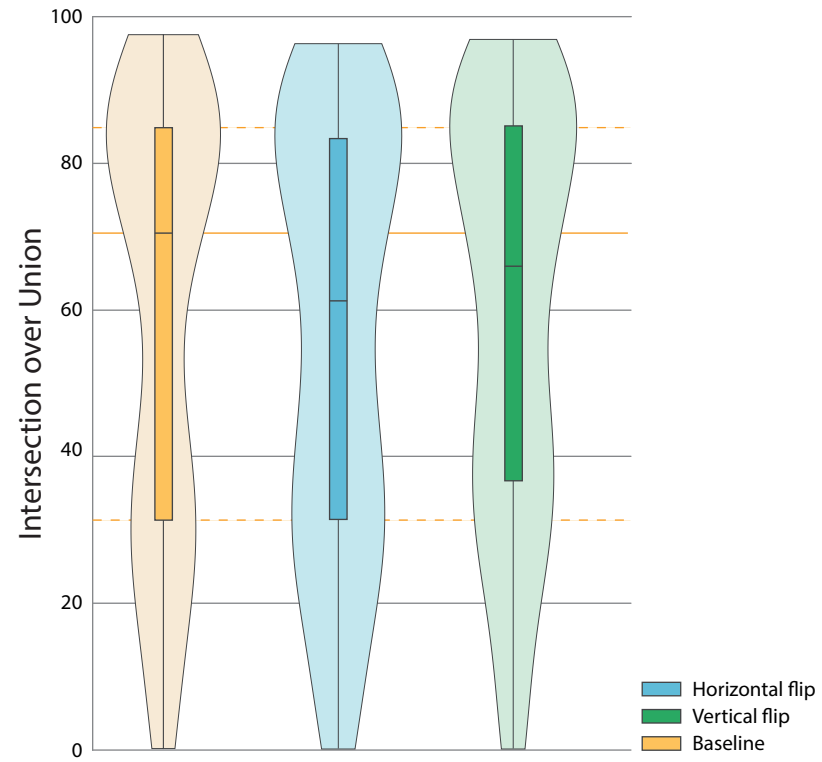


Fig S1.4. Results for horizontal and vertical flips for CVC-EndoSceneStill. Baseline is included. Its median and quartiles are prolonged on the background for reference.

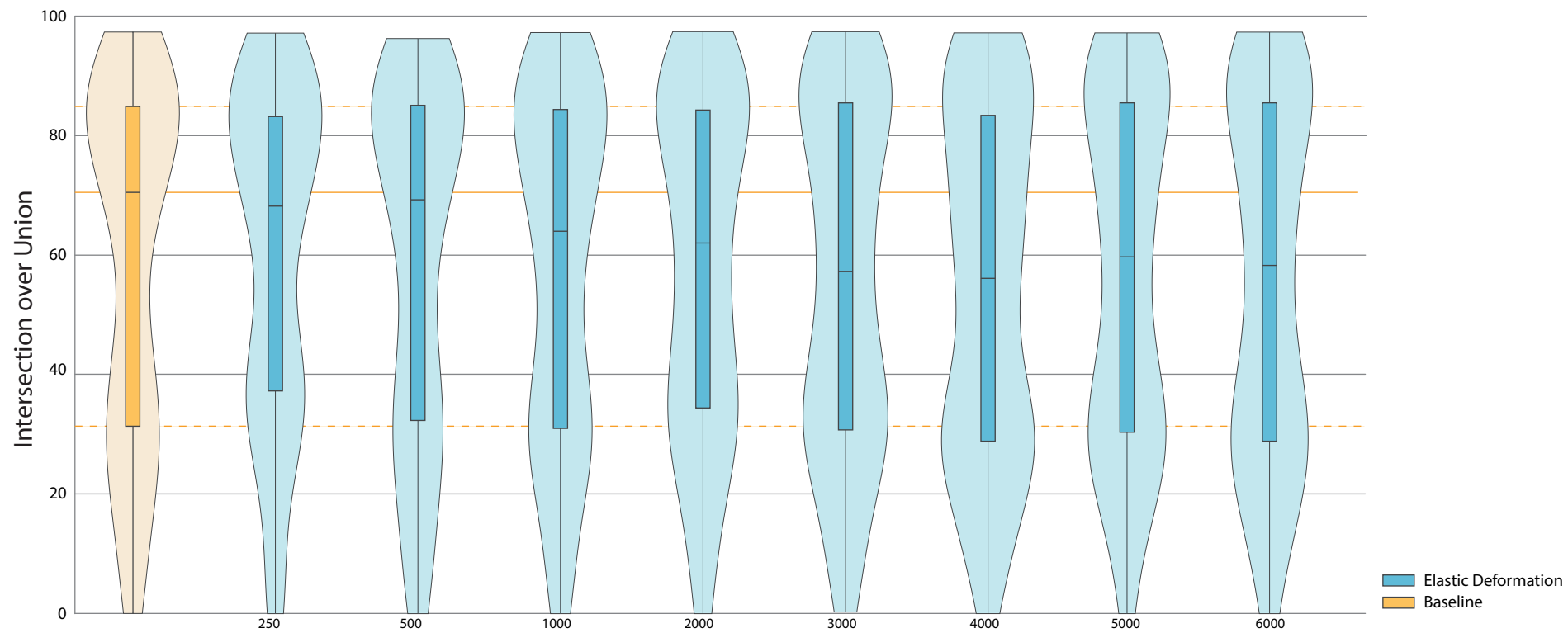


Fig S1.5. Results for elastic deformation for CVC-EndoSceneStill. Baseline is included. Its median and quartiles are prolonged on the background for reference.

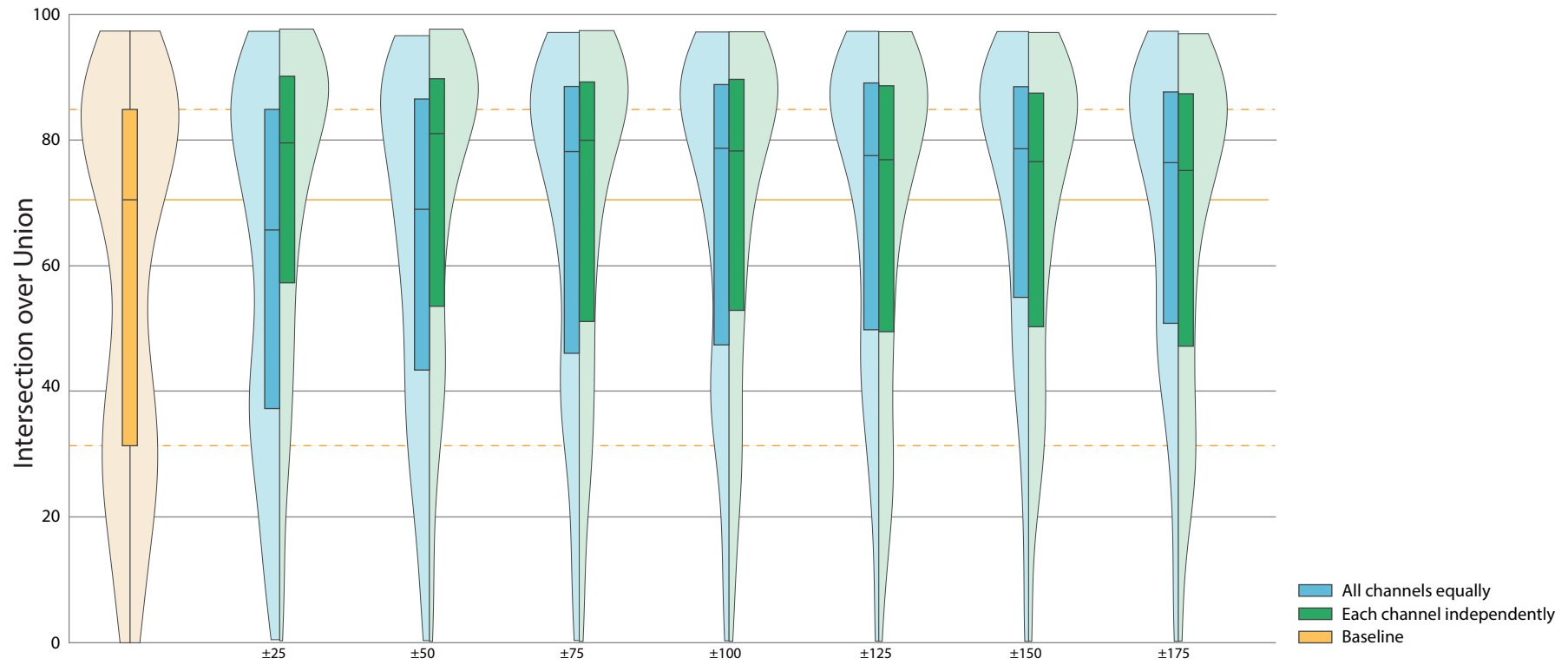


Fig S1.6. Results for changes in brightness for CVC-EndoSceneStill. Baseline is included. Its median and quartiles are prolonged on the background for reference.

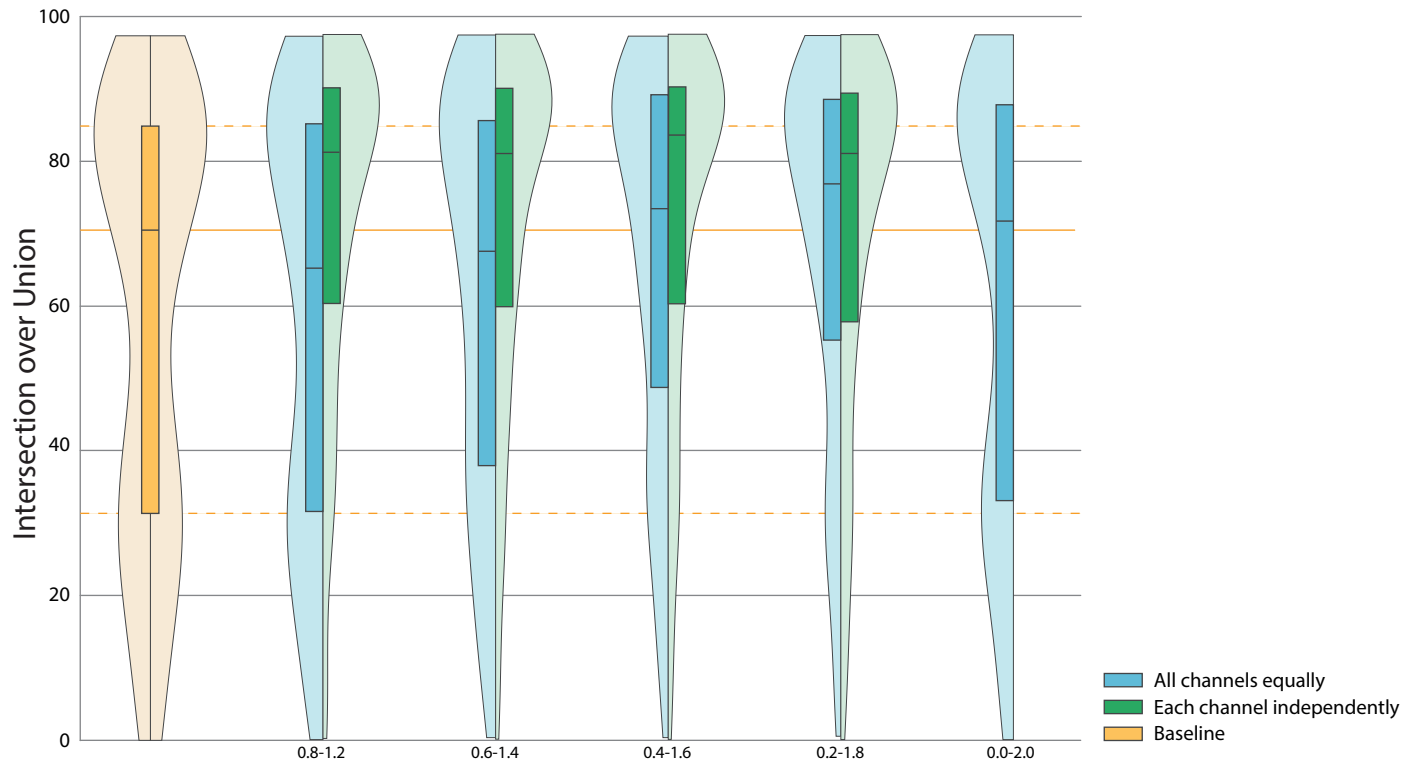


Fig S1.7. Results for changes in contrast for CVC-EndoSceneStill. Baseline is included. Its median and quartiles are prolonged on the background for reference.

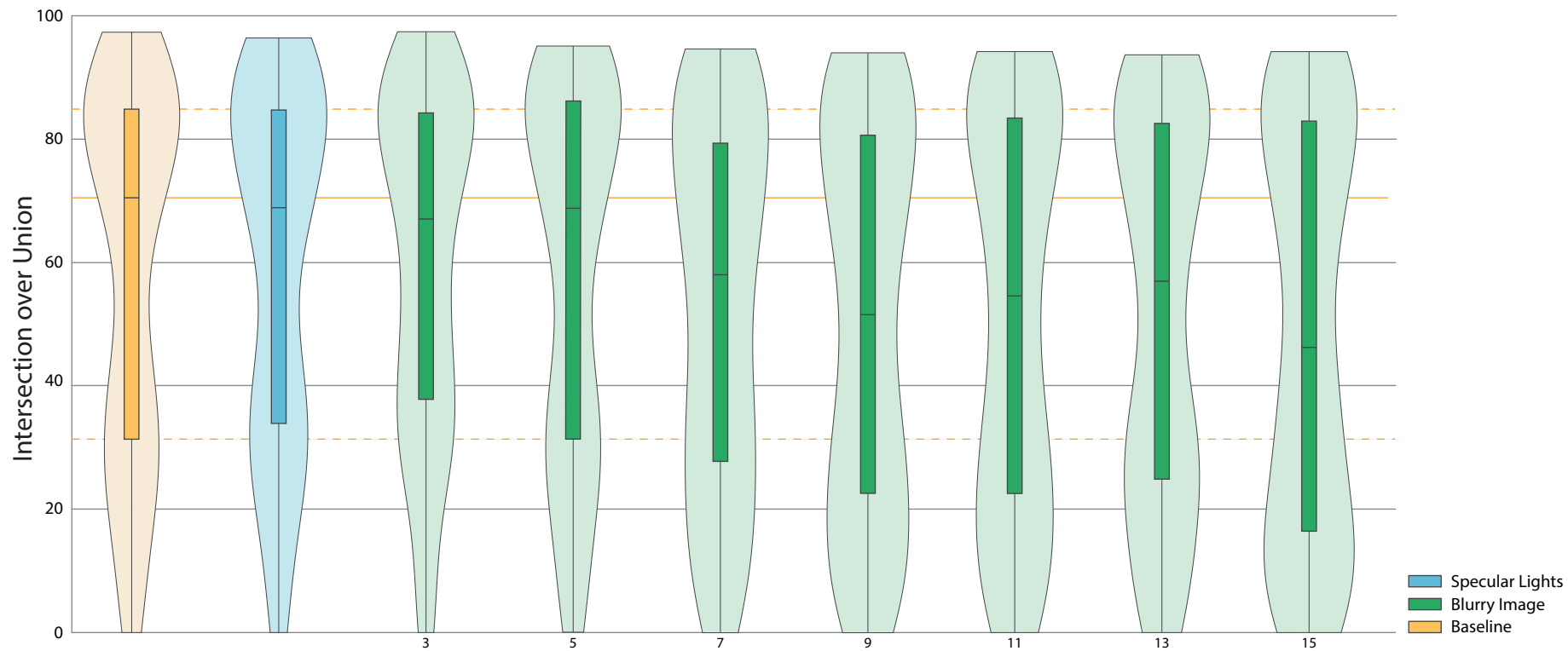


Fig S1.8. Results for inclusion of specular lights and blurry frames (mean filter) for CVC-EndoSceneStill. Baseline is included. Its median and quartiles are prolonged on the background for reference.