

Appendix:
“Good for some, bad for others:
US investors and non-trade issues in preferential trade
agreements”

Lisa Lechner
Department of Political Science
University of Salzburg
lisa.lechner@sbg.ac.at

Contents

List of Countries	5
Baseline Model	9
Anticipation Effect	10
Robustness Checks	10
a. Placebo Test	11
b. Lagged Dependent Variable	12
c. Subsample: Only Countries Signing a PTA with US	14
d. Alternative Estimation Strategies	16
e. Reduced Model	20
f. Expanded Model	22
f. Time-Variant Interaction (H2): Energy Consumption instead of Pollution Levels	24
Sector-Names' Matching Table Sectors	27

Note on the Codebook: I coded the following data-points twice in every PTA. Additionally and to ensure reliability, I cross-checked some data points against existing data-sets that cover similar variables (Kohl et al., 2016; Morin et al., 2016; Raess and Sari, 2016; Spilker and Böhmelt, 2012). Further, I conducted automated text analysis (keyword-match on regular expressions).

Labor Rights: Coding-scheme and factor loadings

Dimension	Variable Name	Definition	Factor Loading
Obligation	lr_main_except	prohibition of trade and investment on the expense of labor rights	0
Obligation	lr_main_promotion ¹	promotion of labor rights	0.053
Obligation	lr_main_obl	obligation to comply with labor rights	0.102
Obligation	lr_obl_measure	concrete measures to improve labor rights	0.185
Obligation	conditionality_post_lr	potential monetary sanctions in case of labor rights violation	0.843
Obligation	conditionality_pre_lr	market access is conditional upon labor rights compliance	5.036
Delegation	delegation_lr_implementation_domestic_norm_dom	decisions on disputes on labor rights must be implemented domestically	0.185
Delegation	body_lr	establishment of a body dealing with labor rights	0.338
Delegation	delegation_lr_dispute_resol_conciliation	conciliation over disputes on labor rights	0.338
Delegation	delegation_lr_access_consult_io ²	consulting international organizations for labor rights issues	0.338
Delegation	delegation_lr_access_file_individual	individuals are allowed to file disputes on labor rights issues	0.554
Delegation	delegation_lr_dispute_resol_adhoc_panel	establishment of ad-hoc panels in case of disputes on labor rights	0.688
Delegation	delegation_lr_access_consult_public	consulting public for labor rights issues	0.688
Delegation	assessment_lr_body	assessment is delegated to international body	0.742
Delegation	delegation_lr_access_consult_business	consulting business for labor rights issues	0.843
Delegation	delegation_lr_access_consult_union	consulting trade unions for labor rights issues	0.843
Delegation	delegation_lr_dispute_resol_state_veto	disputes on labor rights are resolved by member states	1.015
Delegation	delegation_lr_access_consult_experts	consulting experts for labor rights issues	1.227
Delegation	delegation_lr_implementation_international_decision	decisions on disputes are implemented by international tribunals	1.227
Delegation	delegation_lr_access_consult_NGO	consulting NGOs for labor rights issues	1.227
Delegation	delegation_lr_access_consult_science	consulting academia for labor rights issues	5.036
Delegation	delegation_lr_access_file_State	member states file disputes on labor rights	5.036
Precision	lr_general	general clause on labor rights	0.462
Precision	lr_specific	specific definition on labor rights	1.227
Precision	lr_specific_multiple ³	multiple specific issue areas on labor rights (15 coding points)	5.036

¹I use 2 data-points to capture this aspect: labor rights that appear in the preambel, labor rights that appear in the main text, but are written in a promotional rather than binding manner.

²This aspect consists of several data-points that capture the varying IOs: ILO, ILO follow up, ILO children's rights, American Charter of Social Guarantees, UN, UNESR, and European Social Charter.

³This aspect consists of 15 data-points: right to work, right to social security, protection of migrant-workers, right to equal opportunity at work, health and safety at work, prohibition of forced labor, prohibition of child labor, minimum wage, right to unionize, right to bargain collectively, regulated working time (e.g. right to leasure), right to (vocational) training.

⁴I use 2 data-points to capture this aspect: environmental protection issues that appear in the preambel, environmental protection issues that appear in the main text, but are written in a promotional rather than binding manner.

⁵The aspect consists of 38 data-points that capture varying environmental IOs.

⁶This aspect consists of 11 data-points: clean air, emission reduction, prohibition of hazardeous waste, prohibition of hazardeous chemicals, prohibition of contaminating substances, forest protection, sustainable fishing, sustainable mineral extraction, reduction of water pollution, protection of wildlife, protection of biodiversity.

Environmental Protection: Coding-scheme and factor loadings

names	ps		
Obligation	ep_obl_promotion ⁴	promotion of environmental protection	0
Obligation	ep_obl_measure	concrete measure to improve environmental protection	0.526
Obligation	ep_main_exept	prohibition of trade and investment on the expense of environmental protection	0.526
Obligation	ep_obl	obligation to comply with environmental protection	0.582
Obligation	conditionality_post_ep	potential monetary sanctions in case of labor rights violation	2.641
Obligation	conditionality_pre_ep	market access is conditional upon labor rights compliance	13.374
Delegation	delegation_ep_implementation_domestic_norm_dom	decision on disputes on environmental protection must be implemented domestically	0.526
Delegation	body_ep	establishment of a body dealing with environmental protection	0.923
Delegation	delegation_ep_access_consult_public	consulting the public for environmental protection issues	0.923
Delegation	delegation_ep_access_file_Individual	individuals can file disputes on the grounds of environmental protection violation	0.923
Delegation	delegation_ep_dispute_resol_conciliation	conciliation over disputes on environmental protection issues	0.923
Delegation	delegation_ep_access_consult_ngo	consulting NGOs for environmental protection issues	1.657
Delegation	delegation_EP_dispute_resol_adhoc_panel	establishment of ad-hoc panels in case of disputes on environmental protection	1.834
Delegation	assessment_EP_body	assessment is delegated to international body	1.998
Delegation	delegation_ep_access_consult_io	consulting the IOs for environmental protection issues ⁵	1.998
Delegation	delegation_EP_access_consult_business	consulting business for environmental protection issues	1.998
Delegation	delegation_EP_access_consult_experts	consulting experts for environmental protection issues	2.641
Delegation	delegation_EP_access_file_State	member states file disputes on environmental protection issues	2.641
Delegation	delegation_ep_access_consult_science	consulting academia for environmental protection issues	3.455
Delegation	delegation_ep_dispute_resol_state_veto	disputes on environmental protection are resolved by member states	3.455
Delegation	delegation_ep_implementation_international_decision	decision on disputes are implemented by international tribunals	13.374
Precision	ep_general	general clause on labor rights	0.470
Precision	ep_specific	specific definition on labor rights	3.081
Precision	ep_specific_multiple ⁶	multiple specific issue areas on labor rights (15 coding points)	13.374

Note on List of Countries: Bahrain, El-Salvador Guatemala, Jordan⁷, Morocco, and Vietnam are US-PTA partner states, but BEA misses information on sectoral FDI from US firms after the entry into force of the PTA. For this reason, I cover 13 US-PTA partner states in my analysis.

List of Countries

	Country	Measurement period
US-treaty partner	Australia	1982 - 2015
US-treaty partner	Bahrain	1989 - 1999
US-treaty partner	Canada	1982 - 2015
US-treaty partner	Chile	1982 - 2015
US-treaty partner	Colombia	1982 - 2015
US-treaty partner	Costa Rica	1982 - 2015
US-treaty partner	Dominican Republic	1982 - 2015
US-treaty partner	El Salvador	1989 - 1999
US-treaty partner	Honduras	1982 - 2015
US-treaty partner	Israel	1982 - 2015
US-treaty partner	Guatemala	1982 - 1999
US-treaty partner	Jordan	1989 - 1999
US-treaty partner	Korea, Republic of	1982 - 2015
US-treaty partner	Mexico	1982 - 2015
US-treaty partner	Morocco	1989 - 1999
US-treaty partner	Nicaragua	1989 - 1999
US-treaty partner	Panama	1982 - 2015
US-treaty partner	Peru	1982 - 2015
US-treaty partner	Singapore	1982 - 2015
Non-US-treaty partner	Albania	1994 - 1999
Non-US-treaty partner	Algeria	1989 - 1999
Non-US-treaty partner	Andorra	1999 - 1999
Non-US-treaty partner	Angola	1989 - 1999
Non-US-treaty partner	Antigua and Barbuda	1989 - 1999
Non-US-treaty partner	Azerbaijan	1992 - 1999
Non-US-treaty partner	Argentina	1982 - 2015
Non-US-treaty partner	Austria	1982 - 2015
Non-US-treaty partner	Bahamas	1982 - 1999
Non-US-treaty partner	Bangladesh	1989 - 1999
Non-US-treaty partner	Armenia	1999 - 1999
Non-US-treaty partner	Barbados	1982 - 2015
Non-US-treaty partner	Belgium	1982 - 2015
Non-US-treaty partner	Bermuda	1982 - 2015
Non-US-treaty partner	Bhutan	1999 - 1999
Non-US-treaty partner	Bolivia, Plurinational State of	1989 - 1999
Non-US-treaty partner	Bosnia and Herzegovina	1994 - 1999
Non-US-treaty partner	Botswana	1989 - 1999
Non-US-treaty partner	Brazil	1982 - 2015
Non-US-treaty partner	Belize	1989 - 1999
Non-US-treaty partner	Solomon Islands	1994 - 1999
Non-US-treaty partner	Brunei Darussalam	1989 - 1999
Non-US-treaty partner	Bulgaria	1994 - 1999
Non-US-treaty partner	Myanmar	1989 - 1999
Non-US-treaty partner	Belarus	1998 - 1999
Non-US-treaty partner	Cambodia	1998 - 1999
Non-US-treaty partner	Cameroon	1989 - 1999

⁷The Jordan-US PTA was signed in 2000. Therefore, I am able to include Jordan in the analysis on the anticipation effect.

List of Countries

	Country	Measurement period
Non-US-treaty partner	Central African Republic	1999 - 1999
Non-US-treaty partner	Sri Lanka	1989 - 1999
Non-US-treaty partner	Chad	1989 - 1999
Non-US-treaty partner	China	1982 - 2015
Non-US-treaty partner	Taiwan, Province of China	1982 - 2015
Non-US-treaty partner	Congo	1989 - 1999
Non-US-treaty partner	Congo, the Democratic Republic of the	1989 - 1999
Non-US-treaty partner	Croatia	1992 - 1999
Non-US-treaty partner	Cuba	1989 - 1999
Non-US-treaty partner	Cyprus	1989 - 1999
Non-US-treaty partner	Czechoslovakia	1990 - 1992
Non-US-treaty partner	Czech Republic	1993 - 2015
Non-US-treaty partner	Denmark	1982 - 2015
Non-US-treaty partner	Dominica	1989 - 1999
Non-US-treaty partner	Ecuador	1982 - 2015
Non-US-treaty partner	Equatorial Guinea	1992 - 1999
Non-US-treaty partner	Ethiopia	1989 - 1999
Non-US-treaty partner	Eritrea	1997 - 1999
Non-US-treaty partner	Estonia	1994 - 1999
Non-US-treaty partner	Fiji	1989 - 1999
Non-US-treaty partner	Finland	1982 - 2015
Non-US-treaty partner	France	1982 - 2015
Non-US-treaty partner	French Guiana	1989 - 1999
Non-US-treaty partner	Djibouti	1989 - 1999
Non-US-treaty partner	Gabon	1989 - 1999
Non-US-treaty partner	Georgia	1999 - 1999
Non-US-treaty partner	Germany	1982 - 2015
Non-US-treaty partner	Ghana	1989 - 1999
Non-US-treaty partner	Gibraltar	1989 - 1999
Non-US-treaty partner	Greece	1982 - 2015
Non-US-treaty partner	Greenland	1989 - 1999
Non-US-treaty partner	Grenada	1989 - 1999
Non-US-treaty partner	Guinea	1989 - 1999
Non-US-treaty partner	Guyana	1989 - 1999
Non-US-treaty partner	Haiti	1989 - 1999
Non-US-treaty partner	Hong Kong	1982 - 2015
Non-US-treaty partner	Hungary	1989 - 2015
Non-US-treaty partner	Iceland	1989 - 1999
Non-US-treaty partner	India	1982 - 2015
Non-US-treaty partner	Indonesia	1982 - 2015
Non-US-treaty partner	Iran, Islamic Republic of	1989 - 1999
Non-US-treaty partner	Ireland	1982 - 2015
Non-US-treaty partner	Italy	1982 - 2015
Non-US-treaty partner	Cote d'Ivoire	1989 - 1999
Non-US-treaty partner	Jamaica	1982 - 1999
Non-US-treaty partner	Japan	1982 - 2015
Non-US-treaty partner	Kazakhstan	1992 - 1999
Non-US-treaty partner	Kenya	1989 - 1999
Non-US-treaty partner	Korea, Democratic People's Republic of	1990 - 1992
Non-US-treaty partner	Kuwait	1989 - 1999
Non-US-treaty partner	Kyrgyzstan	1999 - 1999
Non-US-treaty partner	Lao People's Democratic Republic	1994 - 1999
Non-US-treaty partner	Lebanon	1989 - 1999
Non-US-treaty partner	Lesotho	1989 - 1999
Non-US-treaty partner	Latvia	1994 - 1999
Non-US-treaty partner	Liberia	1989 - 1999
Non-US-treaty partner	Libya	1989 - 1999
Non-US-treaty partner	Liechtenstein	1989 - 1999
Non-US-treaty partner	Lithuania	1994 - 1999
Non-US-treaty partner	Luxembourg	1982 - 2015

List of Countries

	Country	Measurement period
Non-US-treaty partner	Macao	1989 - 1999
Non-US-treaty partner	Madagascar	1989 - 1999
Non-US-treaty partner	Malawi	1989 - 1999
Non-US-treaty partner	Malaysia	1982 - 2015
Non-US-treaty partner	Mali	1989 - 1999
Non-US-treaty partner	Malta	1989 - 1999
Non-US-treaty partner	Mauritania	1989 - 1999
Non-US-treaty partner	Mauritius	1989 - 1999
Non-US-treaty partner	Moldova, Republic of	1999 - 1999
Non-US-treaty partner	Morocco	1989 - 1999
Non-US-treaty partner	Mozambique	1994 - 1999
Non-US-treaty partner	Oman	1989 - 1999
Non-US-treaty partner	Namibia	1994 - 1999
Non-US-treaty partner	Nauru	1999 - 1999
Non-US-treaty partner	Nepal	1999 - 1999
Non-US-treaty partner	Netherlands	1982 - 2015
Non-US-treaty partner	Netherlands Antilles	1982 - 1999
Non-US-treaty partner	Aruba	1989 - 1999
Non-US-treaty partner	Vanuatu	1989 - 1999
Non-US-treaty partner	New Zealand	1982 - 2015
Non-US-treaty partner	Nicaragua	1989 - 1999
Non-US-treaty partner	Niger	1989 - 1999
Non-US-treaty partner	Nigeria	1982 - 2015
Non-US-treaty partner	Norway	1982 - 2015
Non-US-treaty partner	Micronesia, Federated States of	1989 - 1999
Non-US-treaty partner	Marshall Islands	1989 - 1999
Non-US-treaty partner	Palau	1989 - 1999
Non-US-treaty partner	Pakistan	1989 - 1999
Non-US-treaty partner	Papua New Guinea	1989 - 1999
Non-US-treaty partner	Paraguay	1989 - 1999
Non-US-treaty partner	Philippines	1982 - 2015
Non-US-treaty partner	Poland	1990 - 2015
Non-US-treaty partner	Portugal	1982 - 2015
Non-US-treaty partner	Qatar	1989 - 1999
Non-US-treaty partner	Romania	1989 - 1999
Non-US-treaty partner	Russian Federation	1989 - 2015
Non-US-treaty partner	Rwanda	1989 - 1993
Non-US-treaty partner	Saint Kitts and Nevis	1989 - 1999
Non-US-treaty partner	Anguilla	1999 - 1999
Non-US-treaty partner	Saint Lucia	1989 - 1999
Non-US-treaty partner	Saint Vincent and the Grenadines	1989 - 1999
Non-US-treaty partner	Saudi Arabia	1982 - 2015
Non-US-treaty partner	Senegal	1989 - 1999
Non-US-treaty partner	Serbia	1992 - 1999
Non-US-treaty partner	Seychelles	1999 - 1999
Non-US-treaty partner	Sierra Leone	1989 - 1999
Non-US-treaty partner	Slovakia	1993 - 1999
Non-US-treaty partner	Viet Nam	1994 - 1999
Non-US-treaty partner	Slovenia	1992 - 1999
Non-US-treaty partner	Somalia	1989 - 1999
Non-US-treaty partner	South Africa	1982 - 2015
Non-US-treaty partner	Zimbabwe	1989 - 1999
Non-US-treaty partner	Yemen People's Republic	1989 - 1989
Non-US-treaty partner	Spain	1982 - 2015
Non-US-treaty partner	Sudan	1989 - 1999
Non-US-treaty partner	Suriname	1989 - 1999
Non-US-treaty partner	Swaziland	1989 - 1999
Non-US-treaty partner	Sweden	1982 - 2015
Non-US-treaty partner	Switzerland	1982 - 2015
Non-US-treaty partner	Syrian Arab Republic	1989 - 1999

List of Countries

	Country	Measurement period
Non-US-treaty partner	Thailand	1982 - 2015
Non-US-treaty partner	Togo	1989 - 1999
Non-US-treaty partner	Tonga	1989 - 1999
Non-US-treaty partner	Trinidad and Tobago	1982 - 1999
Non-US-treaty partner	United Arab Emirates	1982 - 2015
Non-US-treaty partner	Tunisia	1989 - 1999
Non-US-treaty partner	Turkey	1982 - 2015
Non-US-treaty partner	Turkmenistan	1994 - 1999
Non-US-treaty partner	Uganda	1989 - 1999
Non-US-treaty partner	Ukraine	1994 - 1999
Non-US-treaty partner	Macedonia, the former Yugoslav Republic of	1999 - 1999
Non-US-treaty partner	Egypt	1982 - 2015
Non-US-treaty partner	United Kingdom	1982 - 2015
Non-US-treaty partner	Tanzania, United Republic of	1989 - 1999
Non-US-treaty partner	Burkina Faso	1989 - 1999
Non-US-treaty partner	Uruguay	1989 - 1999
Non-US-treaty partner	Uzbekistan	1993 - 1999
Non-US-treaty partner	Venezuela, Bolivarian Republic of	1982 - 2015
Non-US-treaty partner	Samoa	1989 - 1999
Non-US-treaty partner	Yemen	1989 - 1999
Non-US-treaty partner	Zambia	1989 - 1999

Baseline Models

Table 2: Baseline (H1)

<i>Dependent variable:</i>	
EP in PTA	0.354*** (0.121)
Pollution Levels	646,114.000* (337,826.400)
Economic Depth of PTA	-0.008 (0.095)
Residual of 1st stage	-0.030 (0.044)
EP in PTA:Pollution Levels	-0.154*** (0.013)
Constant	-1,201,505.000* (628,216.200)
Year-fixed effects?	Yes
Country-fixed effects?	Yes
Observations	39,955
R ²	0.442
Adjusted R ²	0.438
Residual Std. Error	4.440 (df = 39720)
F Statistic	134.186*** (df = 234; 39720)

Note: *p<0.1; **p<0.05; ***p<0.01

Table 3: Baseline (H2)

	<i>Dependent variable:</i>	
	FDI (low-wage) (1)	FDI (high-wage) (2)
Labor Rights in PTA	0.714*** (0.158)	-1.065*** (0.159)
Labor Endowment	4.838*** (1.677)	-4.815*** (1.866)
Economic Depth of PTA		2.060*** (0.335)
Residual of 1st stage	0.033 (0.082)	0.129 (0.080)
Labor Rights:Labor Endow.	-2.228*** (0.343)	3.524*** (0.495)
Constant	-3.424*** (0.821)	2.267** (0.988)
Year-fixed effects?	Yes	Yes
Country-fixed effects?	Yes	Yes
Observations	19,389	21,534
R ²	0.469	0.419
Adjusted R ²	0.463	0.413
Residual Std. Error	4.391 (df = 19166)	4.480 (df = 21310)
F Statistic	76.304*** (df = 222; 19166)	68.990*** (df = 223; 21310)

Note: *p<0.1; **p<0.05; ***p<0.01

Anticipation Effect

Table 4: Anticipation Effect (H1)

	<i>Dependent variable:</i>		
	(lag2)	(lag4)	(lag8)
EP in PTA	0.014 (0.138)	0.540*** (0.130)	4.439*** (0.249)
Pollution Levels	-0.542*** (0.017)	-0.536*** (0.017)	-0.532*** (0.017)
Economic Depth of PTA	0.079 (0.051)	-0.122** (0.051)	-2.144*** (0.124)
Residual of 1st stage	0.151 (0.110)	-0.293*** (0.105)	-3.604*** (0.209)
EP in PTA:Pollution Levels	-0.105*** (0.011)	-0.103*** (0.010)	-0.080*** (0.008)
Constant	1.062** (0.522)	1.019* (0.522)	0.842 (0.520)
Year-fixed effects?	Yes	Yes	Yes
Country-fixed effects?	Yes	Yes	Yes
Observations	39,591	39,591	39,591
R ²	0.302	0.302	0.307
Adjusted R ²	0.298	0.298	0.303
Residual Std. Error (df = 39371)	4.349	4.348	4.333
F Statistic (df = 219; 39371)	77.638***	77.771***	79.569***

Note: *p<0.1; **p<0.05; ***p<0.01

Table 5: Anticipation Effect (H2)

	<i>Dependent variable:</i>					
	low-wage (lag2)	high-wage (lag2)	low-wage (lag4)	high-wage (lag4)	low-wage (lag8)	high-wage (lag8)
Labor Rights in PTA	0.528* (0.302)	-1.152*** (0.269)	1.071*** (0.241)	-0.547** (0.214)	3.895*** (0.293)	1.982*** (0.274)
Labor Endowment	7.633*** (0.401)	16.087*** (0.438)	7.679*** (0.402)	16.076*** (0.439)	7.913*** (0.407)	15.976*** (0.444)
Economic Depth of PTA	-0.002 (0.196)	0.216 (0.174)	-0.409*** (0.156)	-0.147 (0.139)	-2.609*** (0.211)	-1.921*** (0.196)
Residual of 1st stage	0.018 (0.064)	0.059 (0.058)	-0.147** (0.070)	-0.092 (0.064)	-1.549*** (0.124)	-1.197*** (0.120)
Labor Rights:Labor Endow.	-1.746*** (0.292)	3.190*** (0.311)	-1.612*** (0.270)	2.918*** (0.285)	-0.672*** (0.228)	2.798*** (0.242)
Constant	-2.779*** (0.706)	-4.758*** (0.636)	-2.797*** (0.706)	-4.749*** (0.636)	-3.007*** (0.704)	-4.833*** (0.635)
Year-fixed effects?	Yes	Yes	Yes	Yes	Yes	Yes
Country-fixed effects?	Yes	Yes	Yes	Yes	Yes	Yes
Observations	18,953	21,625	18,953	21,625	18,953	21,625
R ²	0.346	0.328	0.346	0.328	0.351	0.331
Adjusted R ²	0.338	0.321	0.339	0.321	0.344	0.324
Residual Std. Error	4.243 (df = 18739)	4.067 (df = 21411)	4.242 (df = 18739)	4.067 (df = 21411)	4.226 (df = 18739)	4.058 (df = 21411)

Note: *p<0.1; **p<0.05; ***p<0.01

Robustness Checks

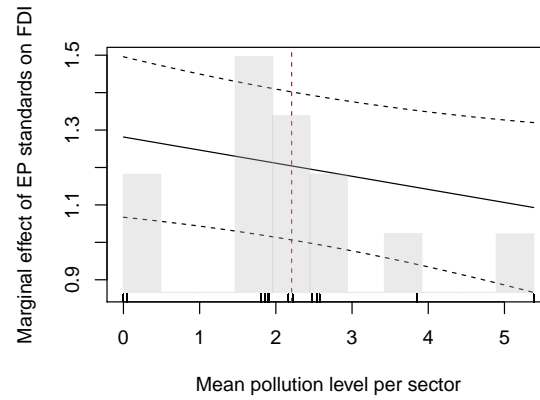


Figure 1: Placebo Test (H1)

Table 6: Placebo Test (H1)

	<i>Dependent variable:</i>
EP in PTA	1.281*** (0.109)
Pollution Levels	-0.582*** (0.018)
Economic Depth of PTA	-0.923*** (0.083)
Residual of 1st stage	-2.089*** (0.110)
EP in PTA:Pollution Levels	-0.035* (0.018)
Constant	0.402 (0.562)
Year-fixed effects?	Yes
Country-fixed effects?	Yes
Observations	37,940
R ²	0.359
Adjusted R ²	0.355
Residual Std. Error	4.675 (df = 37717)
F Statistic	95.024*** (df = 222; 37717)
<i>Note:</i>	* p<0.1; ** p<0.05; *** p<0.01

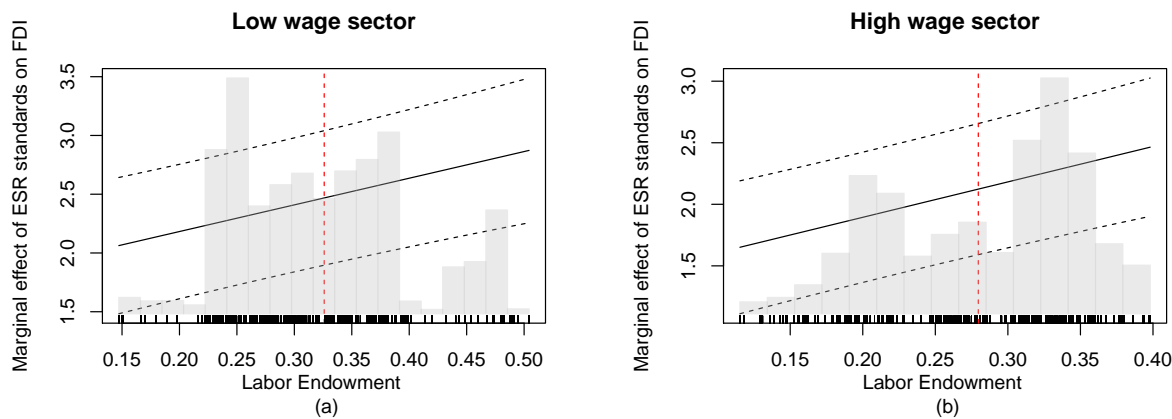


Figure 2: Placebo Test (H2)

Table 7: Placebo Test (H2)

	<i>Dependent variable:</i>	
	FDI (low-wage) (1)	FDI (high-wage) (2)
Labor Rights in PTA	1.729*** (0.318)	1.319*** (0.294)
Labor Endowment	8.789*** (0.430)	19.478*** (0.499)
Economic Depth of PTA	-2.157*** (0.251)	-1.811*** (0.235)
Residual of 1st stage	-4.267*** (0.330)	-3.627*** (0.310)
Labor Rights:Labor Endow.	2.268*** (0.496)	2.876*** (0.539)
Constant	-3.608*** (0.706)	-6.060*** (0.754)
Year-fixed effects?	Yes	Yes
Country-fixed effects?	Yes	Yes
Observations	18,393	20,415
R ²	0.424	0.374
Adjusted R ²	0.417	0.368
Residual Std. Error	4.492 (df = 18177)	4.546 (df = 20199)
F Statistic	62.207*** (df = 215; 18177)	56.175*** (df = 215; 20199)

Note:

* p<0.1; ** p<0.05; *** p<0.01

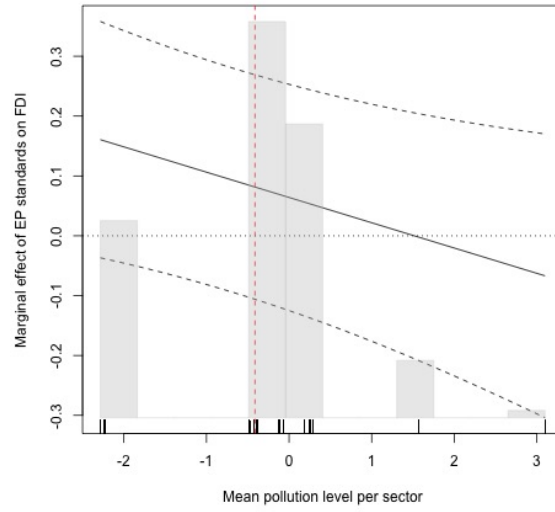


Figure 3: Lagged Dependent Variable (H1)

Table 8: Lagged Dependent Variable (H1)

	<i>Dependent variable:</i>
EP in PTA	0.064 (0.096)
Pollution Levels	-0.434*** (0.036)
Economic Depth of PTA	-0.014 (0.079)
Lagged DV	0.360*** (0.010)
EP in PTA:Pollution Levels	-0.042** (0.020)
Constant	3.543*** (0.843)
Year-fixed effects?	Yes
Country-fixed effects?	Yes
Observations	14,376
R ²	0.363
Adjusted R ²	0.355
Residual Std. Error	4.414 (df = 14203)
F Statistic	47.038*** (df = 172; 14203)

Note: * p<0.1; ** p<0.05; *** p<0.01

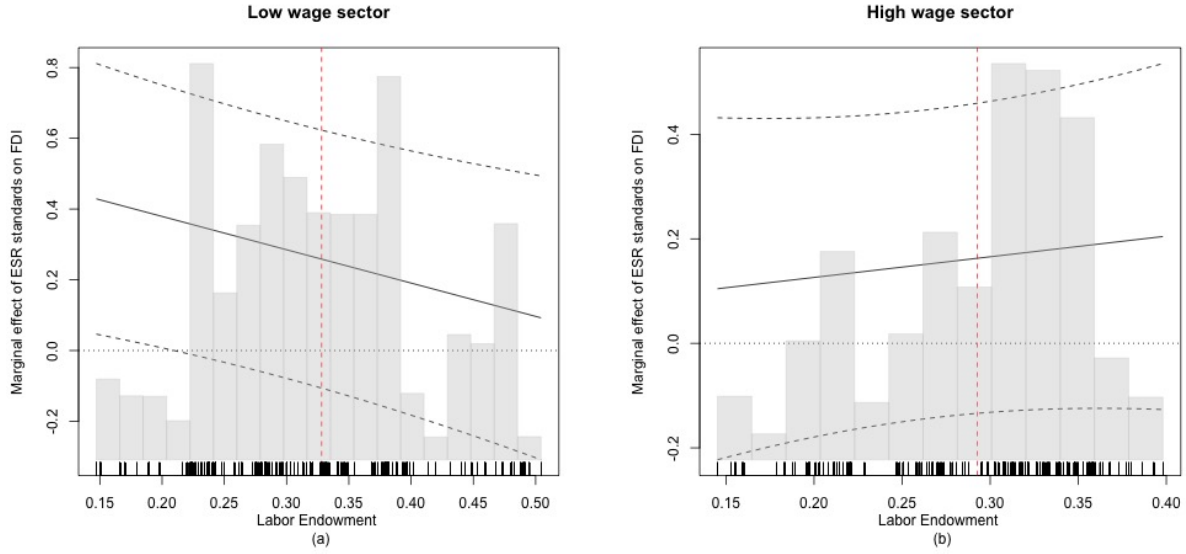


Figure 4: Lagged Dependent Variable (H2)

Table 9: Lagged Dependent Variable (H2)

	<i>Dependent variable:</i>	
	FDI (low-wage) (1)	FDI (high-wage) (2)
Labor Rights in PTA	0.567** (0.222)	0.047 (0.218)
Labor Endowment	7.124*** (0.643)	22.167*** (0.967)
Economic Depth of PTA	-0.113 (0.127)	-0.113 (0.103)
Lagged DV	0.266*** (0.016)	0.350*** (0.013)
Labor Rights:Labor Endow.	-0.942** (0.412)	0.395 (0.586)
Constant	0.539 (1.146)	-4.254*** (1.162)
Year-fixed effects?	Yes	Yes
Country-fixed effects?	Yes	Yes
Observations	7,980	7,363
R ²	0.335	0.436
Adjusted R ²	0.321	0.422
Residual Std. Error	4.532 (df = 7808)	4.150 (df = 7191)
F Statistic	23.012*** (df = 171; 7808)	32.483*** (df = 171; 7191)

Note: * p<0.1; ** p<0.05; *** p<0.01

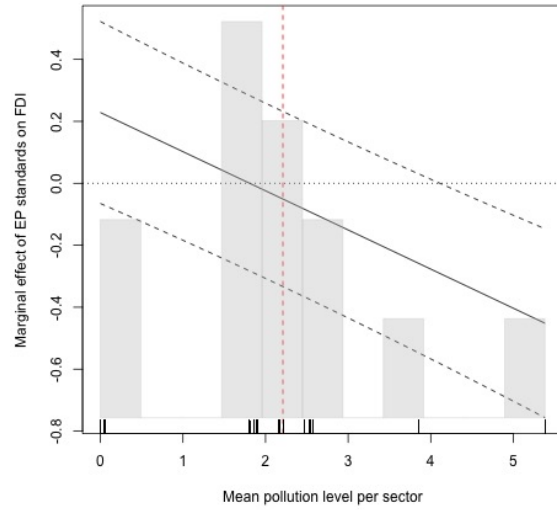


Figure 5: Subsample: Only Countries Signing a PTA with US (H1)

Table 10: Subsample: Only Countries Signing a PTA with US (H1)

	<i>Dependent variable:</i>
EP in PTA	0.229 (0.150)
Pollution Levels	-0.787*** (0.065)
Economic Depth of PTA	0.029 (0.119)
Residual of 1st stage	-0.021 (0.080)
EP in PTA:Pollution Levels	-0.126*** (0.018)
Constant	11.441*** (0.521)
Year-fixed effects?	Yes
Country-fixed effects?	Yes
Observations	5,746
R ²	0.255
Adjusted R ²	0.249
Residual Std. Error	5.563 (df = 5695)
F Statistic	39.037*** (df = 50; 5695)
<i>Note:</i>	* p<0.1; ** p<0.05; *** p<0.01

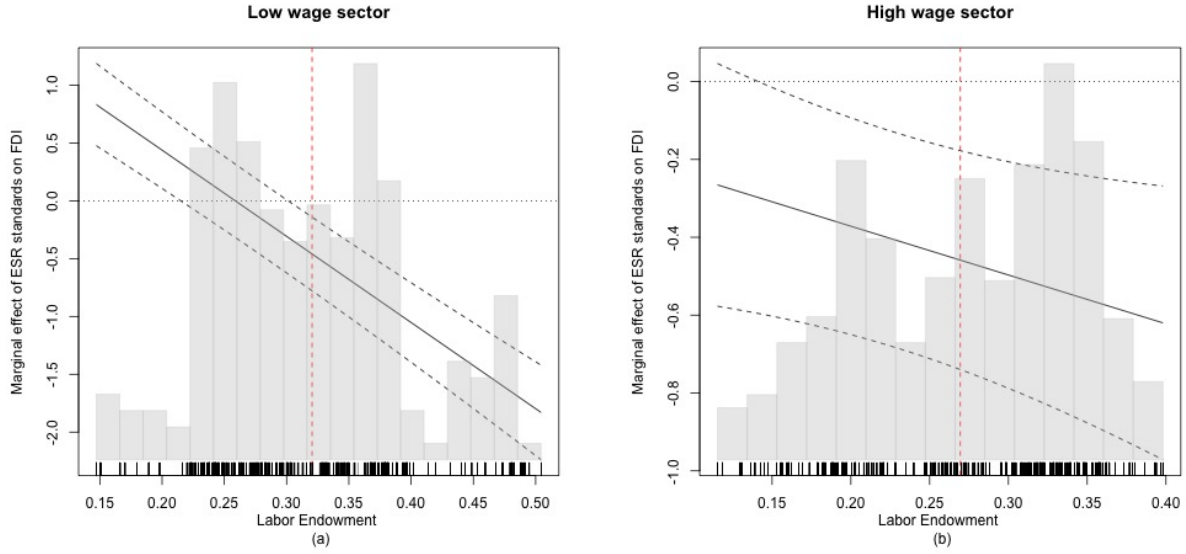


Figure 6: Subsample: Only Countries Signing a PTA with US (H2)

Table 11: Subsample: Only Countries Signing a PTA with US (H2)

	<i>Dependent variable:</i>	
	FDI (low-wage) (1)	FDI (high-wage) (2)
Labor Rights in PTA	1.928*** (0.236)	-0.121 (0.205)
Labor Endowment	12.499*** (1.710)	28.435*** (1.751)
Economic Depth of PTA	-0.051 (0.103)	0.154* (0.091)
Residual of 1st stage	4.291*** (0.334)	3.776*** (0.302)
Labor Rights:Labor Endow.	-7.452*** (0.605)	-1.254* (0.654)
Constant	6.954*** (0.892)	-0.010 (0.820)
Year-fixed effects?	Yes	Yes
Country-fixed effects?	Yes	Yes
Observations	2,576	2,884
R ²	0.277	0.416
Adjusted R ²	0.265	0.407
Residual Std. Error	5.461 (df = 2531)	5.104 (df = 2839)
F Statistic	22.063*** (df = 44; 2531)	45.958*** (df = 44; 2839)

Note: *p<0.1; **p<0.05; ***p<0.01

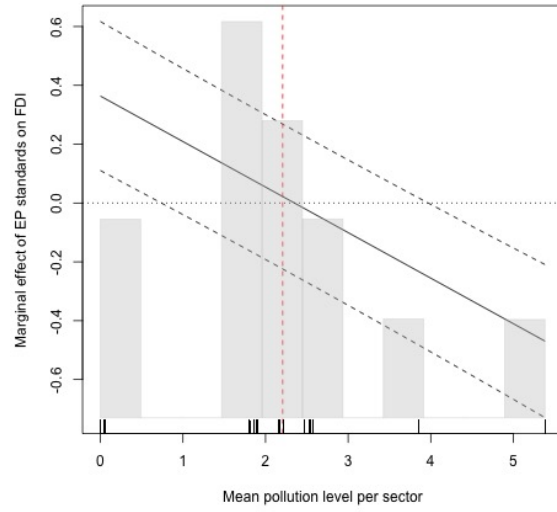


Figure 7: Pooling-OLS Model(H1)

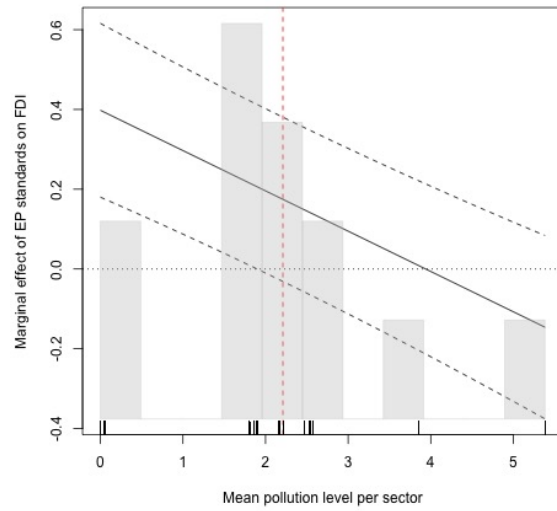


Figure 8: Random Effects Model (H1)

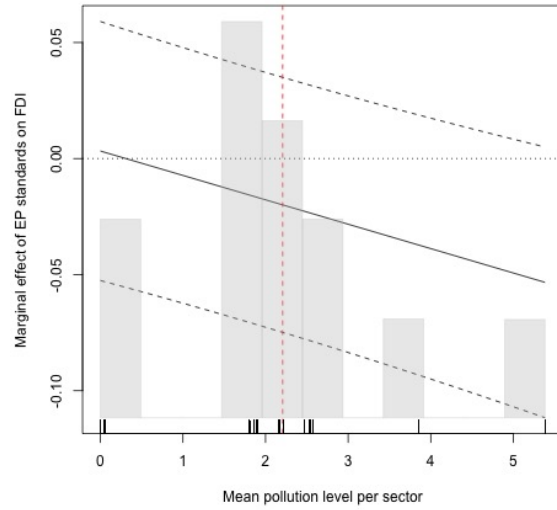


Figure 9: Poisson Maximum Likelihood (H1)

Table 12: Alternative Estimation Strategies (H1)

	Dependent variable:		
	(pooling) (1)	panel linear (random eff.) (2)	glm: quasipoisson link = log (poisson) (3)
EP in PTA	0.364*** (0.129)	0.398*** (0.111)	0.003 (0.028)
Pollution Levels	-0.598*** (0.018)	-0.834*** (0.208)	-0.150*** (0.005)
Economic Depth of PTA	-0.014 (0.102)	-0.157* (0.087)	0.011 (0.023)
Residual of 1st stage	-0.033 (0.047)	-0.145** (0.059)	0.001 (0.012)
GDP		1.817*** (0.214)	
POP		-0.758** (0.342)	
Geographic Distance		-0.305 (0.341)	
EP in PTA:Pollution Levels	-0.155*** (0.014)	-0.101*** (0.016)	-0.011*** (0.003)
Constant	0.698 (0.570)	-21.338*** (5.261)	-1.513** (0.663)
Year-fixed effects?	Yes	Yes	
Country-fixed effects?	Yes	Yes	
Observations	39,955	5,746	39,955
R ²	0.359	0.038	
Adjusted R ²	0.356	0.032	
F Statistic	100.276*** (df = 222; 39732)	5.568*** (df = 41; 5704)	

Note:

*p<0.1; **p<0.05; ***p<0.01

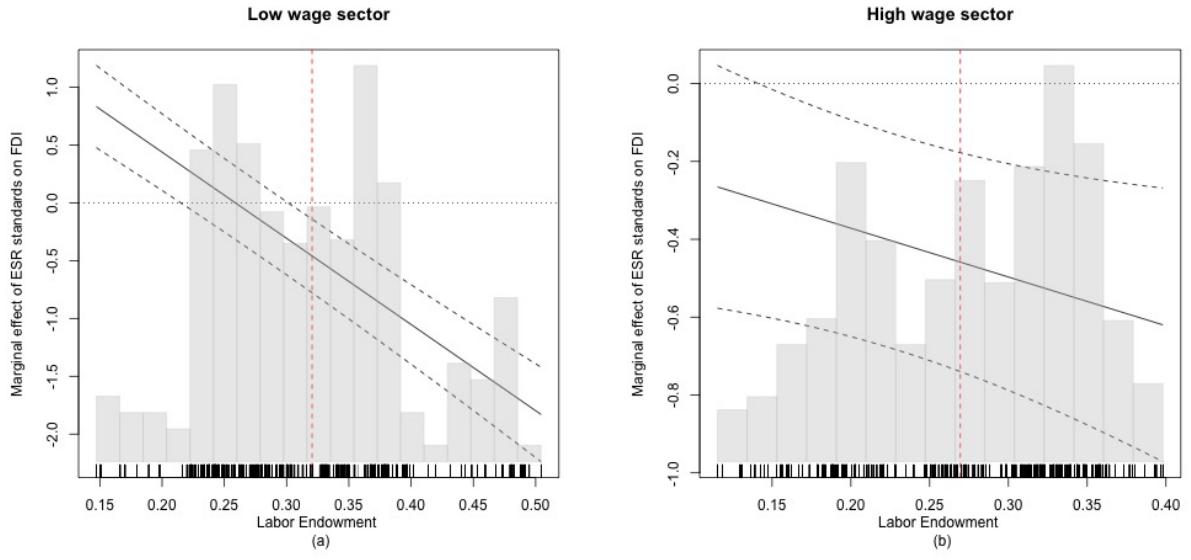


Figure 10: Pooled-OLS model (H2)

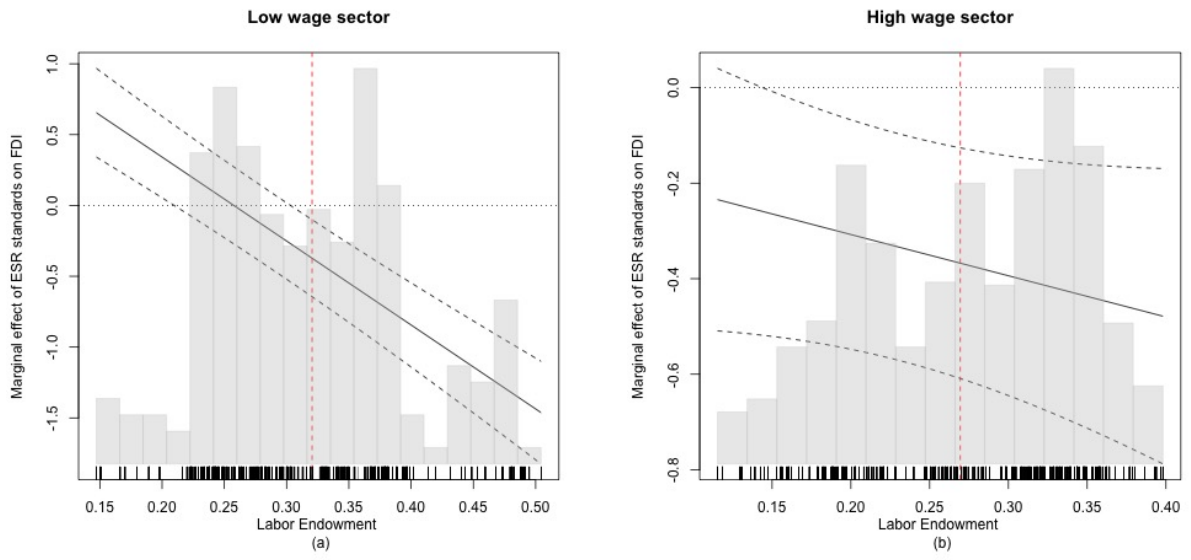


Figure 11: Random Effect Model (H2)

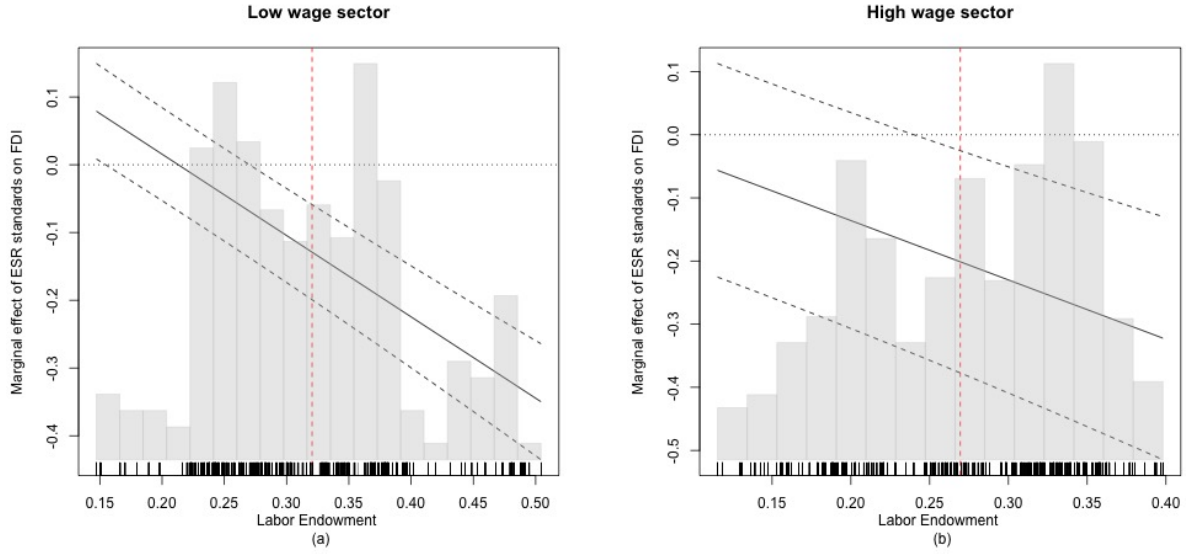


Figure 12: Poisson Maximum Likelihood (H2)

Table 13: Alternative Estimation Strategies (H2)

	<i>Dependent variable:</i>					
			<i>panel linear</i>		<i>glm: quasipoisson link = log</i>	
	<i>low-wage (pooling)</i>	<i>high-wage (pooling)</i>	<i>low-wage (random eff.)</i>	<i>high-wage (random eff.)</i>	<i>low-wage (poisson)</i>	<i>high-wage (poisson)</i>
	(1)	(2)	(3)	(4)	(5)	(6)
Labor Rights in PTA	1.928*** (0.236)	-0.121 (0.205)	1.482*** (0.210)	-0.218 (0.181)	0.256*** (0.042)	0.052 (0.089)
Labor Endowment	12.499*** (1.710)	28.435*** (1.751)	21.437*** (3.285)	5.805* (3.290)	1.750*** (0.262)	6.852*** (0.489)
Economic Depth of PTA	-0.051 (0.103)	0.154* (0.091)	-0.0001 (0.085)	0.201*** (0.075)	0.015 (0.022)	0.094* (0.056)
Residual of 1st stage	4.291*** (0.334)	3.776*** (0.302)	3.583*** (0.274)	2.845*** (0.248)	0.789*** (0.067)	0.738*** (0.090)
GDP			2.522*** (0.308)	2.404*** (0.268)		
POP			-1.624*** (0.462)	-1.439*** (0.398)		
Geographic Distance			-0.370 (0.422)	0.129 (0.366)		
Labor Rights:Labor Endow.	-7.452*** (0.605)	-1.254* (0.654)	-6.037*** (0.565)	-0.918 (0.598)	-1.201*** (0.098)	-0.940*** (0.171)
Constant	6.954*** (0.892)	-0.010 (0.820)	-31.115*** (6.536)	-32.285*** (5.688)	1.804*** (0.135)	-0.120 (0.214)
Year-fixed effects?	Yes	Yes	Yes	Yes	Yes	Yes
Country-fixed effects?	Yes	Yes	Yes	Yes	Yes	Yes
Observations	2,576	2,884	2,576	2,884	2,576	2,884
R ²	0.277	0.416	0.111	0.119		
Adjusted R ²	0.265	0.407	0.099	0.108		

Note:

* p<0.1; ** p<0.05; *** p<0.01

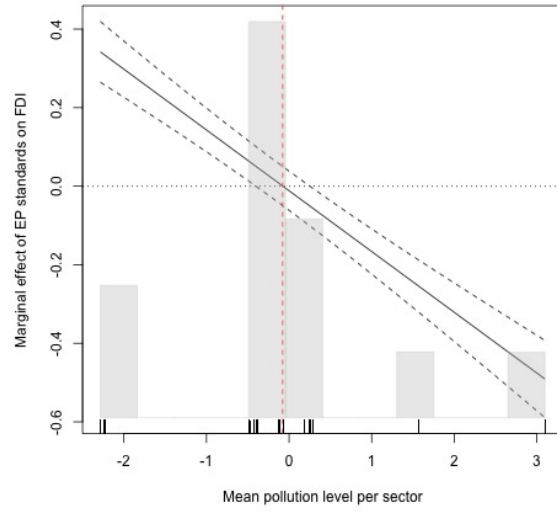


Figure 13: Reduced Model (H1)

Table 14: Reduced Model(H1)

	<i>Dependent variable:</i>
EP in PTA	-0.012 (0.025)
Pollution Levels	-0.598*** (0.018)
EP in PTA:Pollution Levels	-0.155*** (0.014)
Constant	-0.666 (0.569)
Year-fixed effects?	Yes
Country-fixed effects?	Yes
Observations	39,955
R ²	0.359
Adjusted R ²	0.356
Residual Std. Error	4.755 (df = 39734)
F Statistic	101.184*** (df = 220; 39734)
<i>Note:</i>	*p<0.1; **p<0.05; ***p<0.01

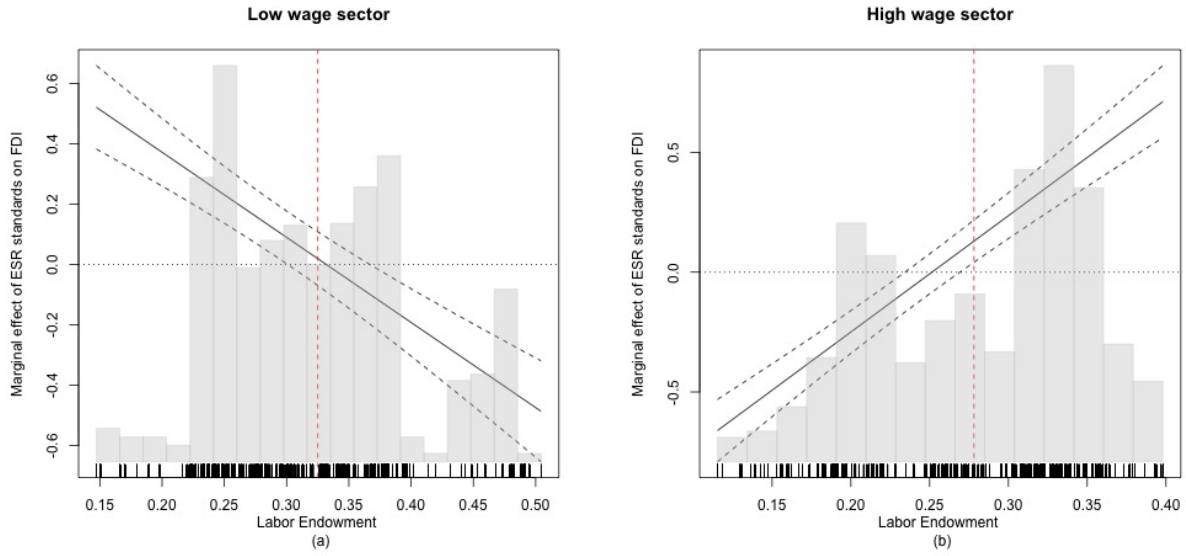


Figure 14: Reduced Model (H2)

Table 15: Reduced Model (H2)

	<i>Dependent variable:</i>	
	FDI (low-wage) (1)	FDI (high-wage) (2)
Labor Rights in PTA	0.936*** (0.116)	-1.221** (0.107)
Labor Endowment	9.138*** (0.429)	20.281*** (0.493)
Labor Rights:Labor Endow.	-2.822*** (0.357)	4.856*** (0.407)
Constant	-3.636*** (0.720)	-6.220*** (0.762)
Year-fixed effects?	Yes	Yes
Country-fixed effects?	Yes	Yes
Observations	19,389	21,534
R ²	0.419	0.385
Adjusted R ²	0.413	0.379
Residual Std. Error	4.592 (df = 19174)	4.609 (df = 21319)
F Statistic	64.653*** (df = 214; 19174)	62.426*** (df = 214; 21319)

Note:

* p<0.1; ** p<0.05; *** p<0.01

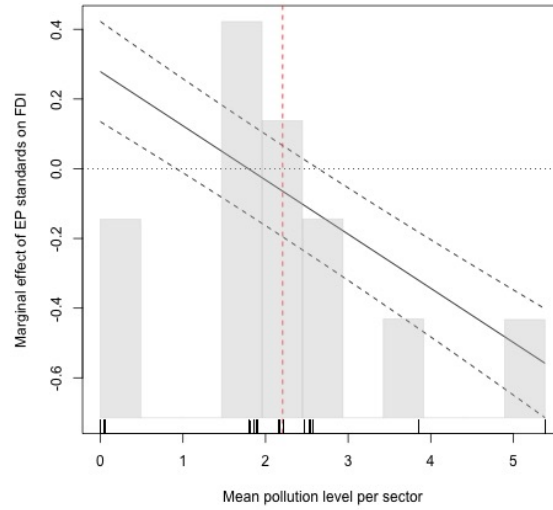


Figure 15: Expanded Model (H1)

Table 16: Expanded Model (H1)

	<i>Dependent variable:</i>
EP in PTA	0.279*** (0.073)
Pollution Levels	-0.597*** (0.019)
Economic Depth of PTA	0.028 (0.054)
Residual of 1st stage	13.508** (6.421)
BIT	-0.280 (0.175)
GDP	0.883*** (0.105)
Population	-1.058*** (0.281)
Geographic Distance	0.000 (1.457)
EP in PTA:Pollution Levels	-0.155*** (0.014)
Constant	-1.901 (13.798)
<hr/>	
Year-fixed effects?	Yes
Country-fixed effects?	Yes
Observations	38,694
R ²	0.359
Adjusted R ²	0.356
Residual Std. Error	4.771 (df = 38477)
F Statistic	99.850*** (df = 216; 38477)
<hr/>	
<i>Note:</i>	*p<0.1; **p<0.05; ***p<0.01

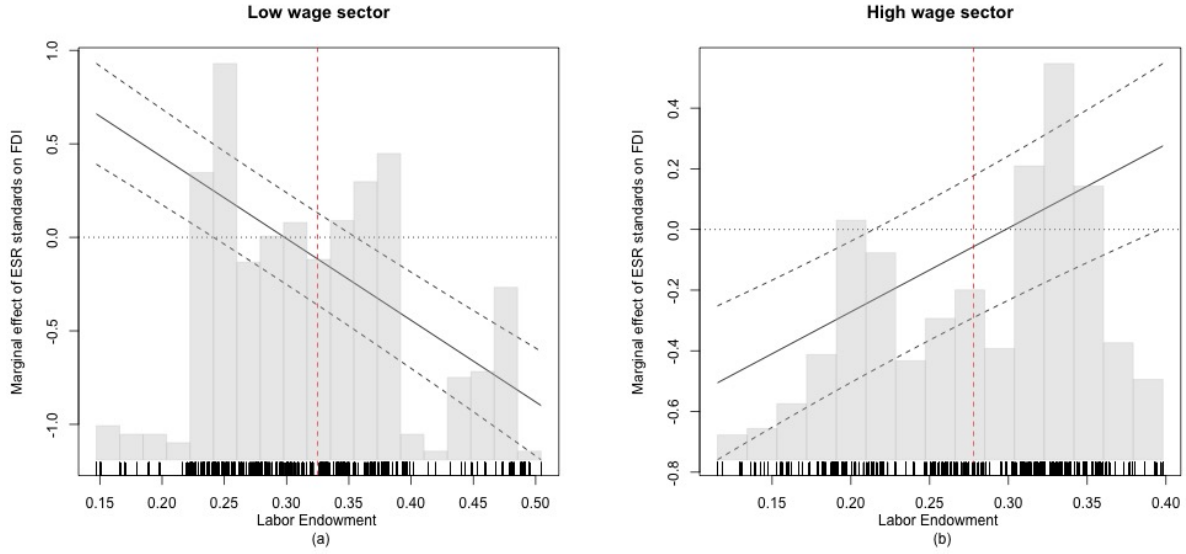


Figure 16: Expanded Model (H2)

Table 17: Expanded Model (H2)

	<i>Dependent variable:</i>	
	FDI (low-wage) (1)	FDI (high-wage) (2)
Labor Rights in PTA	1.303*** (0.168)	-0.824*** (0.158)
Labor Endowment	9.012*** (0.436)	20.116*** (0.501)
Economic Depth of PTA	-0.147* (0.087)	-0.009 (0.081)
Residual of 1st stage	2.015*** (0.162)	1.773*** (0.156)
BIT	-0.253 (0.251)	-0.567** (0.240)
GDP	0.984*** (0.157)	0.609*** (0.150)
Population	-1.886*** (0.473)	-2.739*** (0.448)
Geographic Distance	-0.000 (1.909)	-0.000 (1.795)
Labor Rights:Labor Endow.	-4.366*** (0.379)	2.762*** (0.447)
Constant	3.770 (18.507)	21.782 (17.422)
Year-fixed effects?	Yes	Yes
Country-fixed effects?	Yes	Yes
Observations	18,787	20,846
R ²	0.423	0.389
Adjusted R ²	0.417	0.383
Residual Std. Error	4.588 (df = 18576)	4.612 (df = 20635)
F Statistic	64.963*** (df = 210; 18576)	62.571*** (df = 210; 20635)

Note: *p<0.1; **p<0.05; ***p<0.01

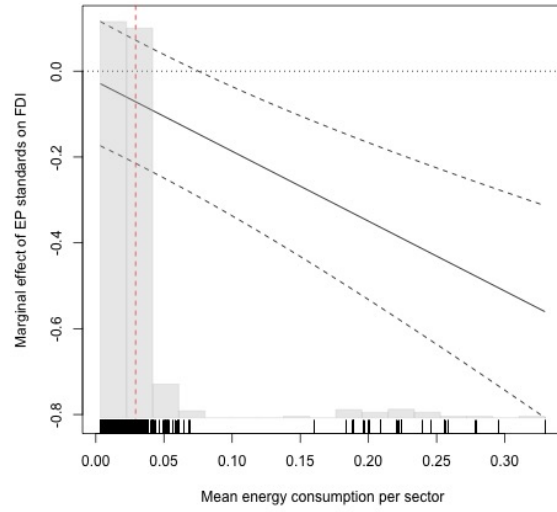


Figure 17: Time-Variant Interaction (H1)

Table 18: Energy Consumption instead of Polluting Levels (H1)

	<i>Dependent variable:</i>
EP in PTA	-0.024 (0.074)
Energy Consumption	-26.112*** (0.661)
Economic Depth of PTA	0.029 (0.060)
EP in PTA:Energy Consumption	-1.629*** (0.346)
Constant	1.407** (0.597)
Year-fixed effects?	Yes
Country-fixed effects?	Yes
Observations	35,513
R ²	0.409
Adjusted R ²	0.406
Residual Std. Error	4.849 (df = 35297)
F Statistic	113.746*** (df = 215; 35297)
<i>Note:</i>	* p<0.1; ** p<0.05; *** p<0.01

Sector Names Matching

Sector-Names' Matching Table

Product-Line Name	Name used in Analysis	BEA-Industry Name	4-Digit Industry Code	World Bank Industry Code
Other electrical equipment and components	Electric equipment	Electric and electronic equipment	3300	3350
Insurance carriers and related activities	Finance non-bank	Finance, except depository institutions	5500	5530
Insurance carriers, except life insurance carriers	Finance non-bank	Finance, except depository institutions	5500	5530
Life insurance carriers	Finance non-bank	Finance, except depository institutions	5500	5530
Agencies, brokerages, and other insurance related activities	Finance non-bank	Finance, except depository institutions	5500	5530
Finance, except depository institutions	Finance non-bank	Finance except depository institutions and insurance	5200	5230
Securities, commodity contracts, and other intermediation and related activities	Finance non-bank	Finance except depository institutions and insurance	5200	5230
Securities and commodity contracts intermediation and brokerage	Finance non-bank	Finance except depository institutions and insurance	5200	5230
Other financial investment activities and exchanges	Finance non-bank	Finance except depository institutions and insurance	5200	5230
Nondepository credit intermediation and related services	Finance non-bank	Finance except depository institutions and insurance	5200	5220
Nondepository credit intermediation	Finance non-bank	Finance except depository institutions and insurance	5200	5220
Activities related to credit intermediation	Finance non-bank	Finance except depository institutions and insurance	5200	5220
Funds, trusts, and other financial vehicles	Finance non-bank	Finance except depository institutions and insurance	5200	5250
Crop production	Agriculture	Food	1100	1110
Forestry and logging	Agriculture	Food	1100	1130
Fishing, hunting, and trapping	Agriculture	Food	1100	1140
Agriculture, forestry, fishing, and hunting	Agriculture	Food	1100	1100
Animal production	Agriculture	Food	1100	1120
Support activities for agriculture and forestry	Agriculture	Food	1100	1150
Animal slaughtering and processing	Food	Food and kindred products	3100	3110
Dairy products	Food	Food and kindred products	3100	3110

Sector-Names' Matching Table

Product-Line Name	Name used in Analysis	BEA-Industry Name	4-Digit Industry Code	World Bank Industry Code
Food	Food	Food and kindred products	3100	
Animal foods	Food	Food and kindred products	3100	3111
Grain and oilseed milling	Food	Food and kindred products	3100	3112
Sugar and confectionery products	Food	Food and kindred products	3100	3113
Fruit and vegetable preserving and specialty foods	Food	Food and kindred products	3100	3114
Seafood product preparation and packaging	Food	Food and kindred products	3100	3117
Bakeries and tortillas	Food	Food and kindred products	3100	3118
Other food products	Food	Food and kindred products	3100	3119
Beverages and tobacco products	Food	Food and kindred products	3100	3120
Beverages	Food	Food and kindred products	3100	3121
Management of nonbank companies and enterprises	Holding	Holding companies nonbank	5500	5510
Holding companies, except bank holding companies	Holding	Holding companies nonbank	5500	5512
Corporate, subsidiary, and regional management offices	Holding	Holding companies nonbank	5500	5513
Information	Information	Information	5100	
Publishing industries	Information	Information	5100	NH
Newspaper, periodical, book, and database publishers	Information	Information	5100	NH
Software publishers	Information	Information	5100	NH
Motion picture and sound recording industries	Information	Information	5100	NH
Motion picture and video industries	Information	Information	5100	NH
Sound recording industries	Information	Information	5100	NH
Broadcasting (except Internet) and telecommunications	Information	Information	5100	NH
Broadcasting (except Internet)	Information	Information	5100	NH
Radio and television broadcasting	Information	Information	5100	NH
Cable and other subscription programming	Information	Information	5100	NH
Telecommunications	Information	Information	5100	NH
Wired telecommunications carriers	Information	Information	5100	NH

Sector-Names' Matching Table

Product-Line Name	Name used in Analysis	BEA-Industry Name	4-Digit Industry Code	World Bank Industry Code
Wireless telecommunications carriers (except satellite)	Information	Information	5100	5172
Satellite telecommunications	Information	Information	5100	5170
Other telecommunications	Information	Information	5100	5170
Data processing, hosting, and related services	Information	Information	5100	5180
Other information services	Information	Information	5100	5191
Machinery	Machinery	Machinery except electrical	3300	3330
Agriculture, construction, and mining machinery	Machinery	Machinery except electrical	3300	3331
Industrial machinery	Machinery	Machinery except electrical	3300	3332
Other	Machinery	Machinery except electrical	3300	3330
Commercial and service industry machinery	Machinery	Machinery except electrical	3300	3333
Ventilation, heating, air-conditioning, and commercial refrigeration equipment	Machinery	Machinery except electrical	3300	3334
Metalworking machinery	Machinery	Machinery except electrical	3300	3335
Engines, turbines, and power transmission equipment	Machinery	Machinery except electrical	3300	3336
Other general purpose machinery	Machinery	Machinery except electrical	3300	3339
Other	Mining	Mining	2100	BA
Iron ores	Mining	Mining	2100	BC
Mining	Mining	Mining	2100	IA
Coal mining	Mining	Mining	2100	
Nonmetallic mineral mining and quarrying	Mining	Mining	2100	
Metal ore mining	Mining	Mining	2100	
Gold and silver ores	Mining	Mining	2100	
Copper, nickel, lead, and zinc ores	Mining	Mining	2100	
Other metal ores	Mining	Mining	2100	
Support activities for mining	Mining	Mining	2100	
Support activities for oil and gas extraction	Mining	Mining	2100	
Support activities for mining, except for oil and gas extraction	Mining	Mining	2100	
Textile product mills	Other manufacturing	Other manufacturing	3000	3140
			3100	3140
			3100	DA

Sector-Names' Matching Table

Product-Line Name	Name used in Analysis	BEA-Industry Name	4-Digit Industry Code	World Bank Industry Code
Apparel	Other manufacturing	Other manufacturing	3100	3150
Leather and allied products	Other manufacturing	Other manufacturing	3100	3160
Miscellaneous manufacturing	Other manufacturing	Other manufacturing	3300	3390
Medical equipment and supplies	Other manufacturing	Other manufacturing	3300	3391
Other miscellaneous manufacturing	Other manufacturing	Other manufacturing	3300	3399
Manufacturing	Other manufacturing	3000		
Textiles, apparel, and leather products	Other manufacturing	Other manufacturing	3100	
Textile mills	Other manufacturing	Other manufacturing	3100	3130
Wood products	Other manufacturing	Other manufacturing	3200	3210
Paper	Other manufacturing	Other manufacturing	3200	3220
Pulp, paper, and paperboard mills	Other manufacturing	Other manufacturing	3200	3221
Converted paper products	Other manufacturing	Other manufacturing	3200	3222
Plastics and rubber products	Other manufacturing	Other manufacturing	3200	3260
Plastics products	Other manufacturing	Other manufacturing	3200	3261
Rubber products	Other manufacturing	Other manufacturing	3200	3262
Oil and gas extraction	Petroleum	Petroleum	2111	BB
Petroleum refining excluding oil and gas extraction	Petroleum	Petroleum	3200	3243
Petroleum and coal products	Petroleum	Petroleum	3200	3240
Integrated petroleum refining and extraction	Petroleum	Petroleum	3200	3242
Asphalt and other petroleum and coal products	Petroleum	Petroleum	3200	3244
Petroleum tanker operations	Petroleum	Petroleum	4800	4833
Primary and fabricated metals	Metal	Primary and fabricated metals	3300	
Primary metals	Metal	Primary and fabricated metals	3300	3310
Iron and steel mills and ferroalloys	Metal	Primary and fabricated metals	3300	3311
Steel products from purchased steel	Metal	Primary and fabricated metals	3300	3312
Alumina and aluminum production and processing	Metal	Primary and fabricated metals	3300	3313
Nonferrous metal (except aluminum) production and processing	Metal	Primary and fabricated metals	3300	3314
Foundries	Metal	Primary and fabricated metals	3300	3315

Sector-Names' Matching Table

Product-Line Name	Name used in Analysis	BEA-Industry Name	4-Digit Industry Code	World Bank Industry Code
Fabricated metal products	Metal	Primary and fabricated metals	3300	3320
Forging and stamping	Metal	Primary and fabricated metals	3300	3320
Cutlery and handtools	Metal	Primary and fabricated metals	3300	3320
Architectural and structural metals	Metal	Primary and fabricated metals	3300	3320
Boilers, tanks, and shipping containers	Metal	Primary and fabricated metals	3300	3320
Hardware	Metal	Primary and fabricated metals	3300	3320
Spring and wire products	Metal	Primary and fabricated metals	3300	3320
Machine shops, turned products, and screws, nuts, and bolts	Metal	Primary and fabricated metals	3300	3320
Coating, engraving, heat treating, and allied activities	Metal	Primary and fabricated metals	3300	3320
Other fabricated metal products	Metal	Primary and fabricated metals	3300	3320
Professional, scientific, and technical services	Technical service	Professional scientific and technical services	5400	5410
Architectural, engineering, and related services	Technical service	Professional scientific and technical services	5400	5410
Computer systems design and related services	Technical service	Professional scientific and technical services	5400	5410
Management, scientific, and technical consulting	Technical service	Professional scientific and technical services	5400	5410
Advertising and related services	Technical service	Professional scientific and technical services	5400	5410
Other	Technical service	Professional scientific and technical services	5400	5410
Legal services	Technical service	Professional scientific and technical services	5400	5410
Accounting, tax preparation, bookkeeping, and payroll services	Technical service	Professional scientific and technical services	5400	5410
Specialized design services	Technical service	Professional scientific and technical services	5400	5410
Scientific research and development services	Technical service	Professional scientific and technical services	5400	5410
Other professional, scientific, and technical services	Technical service	Professional scientific and technical services	5400	5410
Office administrative services	Service	Services	5600	5610
Personal and laundry services	Service	Services	8100	8120

Sector-Names' Matching Table

Product-Line Name	Name used in Analysis	BEA-Industry Name	4-Digit Industry Code	World Bank Industry Code
Repair and maintenance	Service	Services	8100	8110
Other rental and leasing services	Service	Services	5000	5320
Administrative and support services	Service	Services	5000	5610
Facilities support services	Service	Services	5000	5612
Employment services	Service	Services	5000	5613
Business support services	Service	Services	5000	5614
Travel arrangement and reservation services	Service	Services	5000	5615
Investigation and security services	Service	Services	5000	5616
Services to buildings and dwellings	Service	Services	5000	5617
Other support services	Service	Services	5000	5619
Waste management and remediation services	Service	Services	5000	5620
Health care and social assistance	Service	Services	6000	6200
Ambulatory health care services	Service	Services	6000	6200
Hospitals	Service	Services	6000	6220
Nursing and residential care facilities	Service	Services	6000	6230
Social assistance	Service	Services	6000	6240
Accommodation and food services	Service	Services	7000	7200
Accommodation	Service	Services	7000	7210
Food services and drinking places	Service	Services	7000	7220
Miscellaneous services	Service	Services	6000	6100
Educational services	Service	Services	6000	6110
Arts, entertainment, and recreation	Service	Services	7000	7100
Performing arts, spectator sports, and related industries	Service	Services	7000	7110
Museums, historical sites, and similar institutions	Service	Services	7000	7120
Amusement, gambling, and recreation industries	Service	Services	7000	7130
				PF
				5329
				5612
				5613
				5614
				5615
				5616
				5617
				5619
				5620
				6200
				6200
				6220
				6230
				6240
				7200
				7210
				7220
				6100
				6110
				7100
				7110
				7120
				7121
				7130

Sector-Names' Matching Table

Product-Line Name	Name used in Analysis	BEA-Industry Name	4-Digit Industry Code	World Bank Industry Code
Other services (except public administration and private households)	Service	Services	8100	
Nonbusiness entities, except government	Service	Services	8100	
Printing and related support activities	Service	Services	3200	3231
Ship and boat building	Transport equipment	Transportation equipment	3300	3366
Rail transportation	Transport equipment	Transportation equipment	4800	4821
Transit and ground passenger transportation	Transport equipment	Transportation equipment	4800	4850
Water transportation	Transport equipment	Transportation equipment	4800	4830
Air transportation	Transport equipment	Transportation equipment	4800	4810
Transportation equipment	Transport equipment	Transportation equipment	3300	3360
Motor vehicles, bodies and trailers, and parts	Transport equipment	Transportation equipment	3300	3360
Motor vehicles	Transport equipment	Transportation equipment	3300	3361
Motor vehicle bodies and trailers	Transport equipment	Transportation equipment	3300	3362
Motor vehicle parts	Transport equipment	Transportation equipment	3300	3363
Other	Transport equipment	Transportation equipment	3300	3360
Aerospace products and parts	Transport equipment	Transportation equipment	3300	3364
Railroad rolling stock	Transport equipment	Transportation equipment	3300	3365
Other transportation equipment	Transport equipment	Transportation equipment	3300	3369
Electric power generation, transmission, and distribution	Utilities	Utilities	2000	2211
Utilities	Utilities	Utilities	2000	2210
Natural gas distribution	Utilities	Utilities	2000	2210
Water, sewage, and other systems	Utilities	Utilities	2000	2210
Beer, wine, and distilled alcoholic beverages	Wholesale trade	Wholesale trade	4200	4248
Miscellaneous nondurable goods	Wholesale trade	Wholesale trade	4200	4249
Wholesale trade	Wholesale trade	Wholesale trade	4000	4234
Professional and commercial equipment and supplies	Wholesale trade	Wholesale trade	4200	4247
Petroleum and petroleum products	Wholesale trade	Wholesale trade	4000	4240
Drugs and druggists' sundries	Wholesale trade	Wholesale trade	4000	4242
Other	Wholesale trade	Wholesale trade	4000	4230

Sector-Names' Matching Table

Product-Line Name	Name used in Analysis	BEA-Industry Name	4-Digit Industry Code	World Bank Industry Code
Motor vehicles and motor vehicle parts and supplies	Wholesale trade	Wholesale trade	4200	4230
Furniture and home furnishings	Wholesale trade	Wholesale trade	4200	4230
Lumber and other construction materials	Wholesale trade	Wholesale trade	4200	4230
Metals and minerals (except petroleum)	Wholesale trade	Wholesale trade	4200	4230
Electrical goods	Wholesale trade	Wholesale trade	4200	4230
Hardware, and plumbing and heating equipment and supplies	Wholesale trade	Wholesale trade	4200	4230
Machinery, equipment, and supplies	Wholesale trade	Wholesale trade	4200	4230
Miscellaneous durable goods	Wholesale trade	Wholesale trade	4200	4230
Paper and paper products	Wholesale trade	Wholesale trade	4200	4240
Apparel, piece goods, and notions	Wholesale trade	Wholesale trade	4200	4240
Grocery and related products	Wholesale trade	Wholesale trade	4200	4240
Farm product raw materials	Wholesale trade	Wholesale trade	4200	4240
Chemical and allied products	Wholesale trade	Wholesale trade	4200	4240
Wholesale electronic markets and agents and brokers	Wholesale trade	Wholesale trade	4200	4250
Construction	not covered by BEA		2300	
Construction of buildings	not covered by BEA		2300	
Heavy and civil engineering construction	not covered by BEA		2300	
Special trade contractors	not covered by BEA		2300	
Food and beverage stores	not covered by BEA		4400	
Tobacco products	Other manufacturing	Other manufacturing	3100	
Nonmetallic mineral products	Other manufacturing	Other manufacturing	3000	
Clay products and refractories	Other manufacturing	Other manufacturing	3200	
Glass and glass products	Other manufacturing	Other manufacturing	3200	
Cement and concrete products	Other manufacturing	Other manufacturing	3200	
Lime and gypsum products	Other manufacturing	Other manufacturing	3200	
Other nonmetallic mineral products	Other manufacturing	Other manufacturing	3200	
Furniture and related products	Other manufacturing	Other manufacturing	3300	
Retail trade	not covered by BEA		4500	
General merchandise stores	not covered by BEA		4500	

Sector-Names' Matching Table

Product-Line Name	Name used in Analysis	BEA-Industry Name	4-Digit Industry Code	World Bank Industry Code
Clothing and clothing accessories stores	not covered by BEA	4000	4400	4480
Other	not covered by BEA	4000	4400	
Motor vehicle and parts dealers	not covered by BEA	4000	4410	
Furniture and home furnishings stores	not covered by BEA	4000	4420	
Electronics and appliance stores	not covered by BEA	4000	4430	4431
Building material and garden equipment and supplies dealers	not covered by BEA	4000	4440	
Health and personal care stores	not covered by BEA	4000	4460	4461
Gasoline stations	not covered by BEA	4000	4470	4471
Sporting goods, hobby, book, and music stores	not covered by BEA	4000	4500	4510
Miscellaneous store retailers	not covered by BEA	4000	4500	4530
Nonstore retailers	not covered by BEA	4000	4500	4540
Finance and insurance	not covered by BEA	5000		
Other industries	not covered by BEA	1000		
Transportation and warehousing	not covered by BEA	4000	4800	
Other water transportation	not covered by BEA	4000	4800	4830
Truck transportation	not covered by BEA	4000	4800	4840
Pipeline transportation	not covered by BEA	4000	4800	4860
Pipeline transportation of crude oil, refined petroleum products, and natural gas	not covered by BEA	4000	4800	4863
Other pipeline transportation	not covered by BEA	4000	4800	4868
Scenic and sightseeing transportation	not covered by BEA	4000	4800	4870
Support activities for transportation	not covered by BEA	4000	4800	4880
Couriers and messengers	not covered by BEA	4000	4900	4920
Warehousing and storage facilities	not covered by BEA	4000	4900	4930
Petroleum storage for hire	not covered by BEA	4000	4900	4932
Other warehousing and storage	not covered by BEA	4000	4900	4939
Real estate and rental and leasing	not covered by BEA	5000	5300	
Real estate	not covered by BEA	5000	5300	5310
Rental and leasing (except real estate)	not covered by BEA	5000	5300	5320

Sector-Names' Matching Table

Product-Line Name	Name used in Analysis	BEA-Industry Name	4-Digit Industry Code	World Bank Industry Code
Automotive equipment rental and leasing	not covered by BEA		5300	5320
Lessors of nonfinancial intangible assets (except copyrighted works)	not covered by BEA		5300	5330
Administration, support, and waste management	not covered by BEA		5600	
Depository credit intermediation (banking)	Banking	Depository institutions	5200	5220
Banks	Banking	Depository institutions	5200	5220
Branches and agencies	Banking	Depository institutions	5200	5220
Chemicals	Chemicals	Chemicals	3200	3250
Basic chemicals	Chemicals	Chemicals	3200	3250
Resins and synthetic rubber, fibers, and filaments	Chemicals	Chemicals	3200	3250
Pharmaceuticals and medicines	Chemicals	Chemicals	3200	3250
Soap, cleaning compounds, and toilet preparations	Chemicals	Chemicals	3200	3250
Other	Chemicals	Chemicals	3200	3250
Pesticides, fertilizers, and other agricultural chemicals	Chemicals	Chemicals	3200	3250
Paints, coatings, and adhesives	Chemicals	Chemicals	3200	3250
Other chemical products and preparations	Chemicals	Chemicals	3200	3250
Electric lighting equipment	Electric equipment	Electrical equipment and components	3300	3350
Electrical equipment, appliances, and components	Electric equipment	Electrical equipment and components	3300	3350
Household appliances	Electric equipment	Electrical equipment and components	3300	3350
Electrical equipment	Electric equipment	Electrical equipment and components	3300	3350
Other electrical equipment and components	Electric equipment	Electrical equipment and components	3300	3350
Insurance carriers and related activities	Finance non-bank	Finance except depository institutions and insurance	5500	5530
Insurance carriers, except life insurance carriers	Finance non-bank	Finance except depository institutions and insurance	5500	5530

Sector-Names' Matching Table

Product-Line Name	Name used in Analysis	BEA-Industry Name	4-Digit Industry Code	World Bank Industry Code
Life insurance carriers	Finance non-bank	Finance except depository institutions and insurance	5500	5249
Agencies, brokerages, and other insurance related activities	Finance non-bank	Finance except depository institutions and insurance	5500	5242
Finance, except depository institutions	Finance non-bank	Finance except depository institutions and insurance	5200	5230
Management of nonbank companies and enterprises	not covered by BEA	5000	5510	
Holding companies, except bank holding companies	not covered by BEA	5000	5510	5512
Corporate, subsidiary, and regional management offices	not covered by BEA	5000	5510	5513
Machinery	Machinery	Machinery	3300	3330
Agriculture, construction, and mining machinery	Machinery	Machinery	3300	3331
Industrial machinery	Machinery	Machinery	3300	3332
Other	Machinery	Machinery	3300	3330
Commercial and service industry machinery	Machinery	Machinery	3300	3333
Ventilation, heating, air-conditioning, and commercial refrigeration equipment	Machinery	Machinery	3300	3334
Metalworking machinery	Machinery	Machinery	3300	3335
Engines, turbines, and power transmission equipment	Machinery	Machinery	3300	3336
Other general purpose machinery	Machinery	Machinery	3300	3339
Textile product mills	Other manufacturing	Other manufacturing	3100	3140
Apparel	Other manufacturing	Other manufacturing	3100	3150
Leather and allied products	Other manufacturing	Other manufacturing	3100	3160
Miscellaneous manufacturing	Other manufacturing	Other manufacturing	3300	3390
Medical equipment and supplies	Other manufacturing	Other manufacturing	3300	3391
Other miscellaneous manufacturing	Other manufacturing	Other manufacturing	3300	3399
Manufacturing	Other manufacturing	Other manufacturing	3000	
Textiles, apparel, and leather products	Other manufacturing	Other manufacturing	3100	
Textile mills	Other manufacturing	Other manufacturing	3100	3130
Wood products	Other manufacturing	Other manufacturing	3200	3210

Sector-Names' Matching Table

Product-Line Name	Name used in Analysis	BEA-Industry Name	4-Digit Industry Code	World Bank Industry Code
Paper	Other manufacturing	Other manufacturing	3200	3220
Pulp, paper, and paperboard mills	Other manufacturing	Other manufacturing	3200	3221
Converted paper products	Other manufacturing	Other manufacturing	3200	3222
Plastics and rubber products	Other manufacturing	Other manufacturing	3200	3260
Plastics products	Other manufacturing	Other manufacturing	3200	3261
Rubber products	Other manufacturing	Other manufacturing	3200	3262
Professional, scientific, and technical services	Technical service	Services	5400	5410
Architectural, engineering, and related services	Technical service	Services	5400	5413
Computer systems design and related services	Technical service	Services	5400	5415
Management, scientific, and technical consulting	Technical service	Services	5400	5416
Advertising and related services	Technical service	Services	5400	5418
Other	Technical service	Services	5400	5410
Legal services	Technical service	Services	5400	5411
Accounting, tax preparation, bookkeeping, and payroll services	Technical service	Services	5400	5412
Specialized design services	Technical service	Services	5400	5414
Scientific research and development services	Technical service	Services	5400	5417
Other professional, scientific, and technical services	Technical service	Services	5400	5419
Ship and boat building	Transport equipment	Transport equipment	3300	3366
Rail transportation	Transport equipment	Transport equipment	4800	4821
Transit and ground passenger transportation	Transport equipment	Transport equipment	4800	4850
Water transportation	Transport equipment	Transport equipment	4800	4830
Air transportation	Transport equipment	Transport equipment	4800	4810
Transportation equipment	Transport equipment	Transport equipment	3300	3360
Motor vehicles, bodies and trailers, and parts	Transport equipment	Transport equipment	3300	3360
Motor vehicles	Transport equipment	Transport equipment	3300	3361
Motor vehicle bodies and trailers	Transport equipment	Transport equipment	3300	3362
Motor vehicle parts	Transport equipment	Transport equipment	3300	3363
Other	Transport equipment	Transport equipment	3300	3360
				JD
				NB
				ND
				NF

Sector-Names' Matching Table

Product-Line Name	Name used in Analysis	BEA-Industry Name	4-Digit Industry Code	World Bank Industry Code
Aerospace products and parts	Transport equipment	Transport equipment	3300	3364
Railroad rolling stock	Transport equipment	Transport equipment	3300	3365
Other transportation equipment	Transport equipment	Transport equipment	3300	3369
Beer, wine, and distilled alcoholic beverages	Wholesale trade	Wholesale trade	4200	4248 MA
Miscellaneous nondurable goods	Wholesale trade	Wholesale trade	4200	4249 MA
Wholesale trade	Wholesale trade	Wholesale trade	4000	
Professional and commercial equipment and supplies	Wholesale trade	Wholesale trade	4200	4234
Petroleum and petroleum products	Wholesale trade	Wholesale trade	4200	4247
Drugs and druggists' sundries	Wholesale trade	Wholesale trade	4200	4242
Other	Wholesale trade	Wholesale trade	4200	4230
Motor vehicles and motor vehicle parts and supplies	Wholesale trade	Wholesale trade	4200	4231
Furniture and home furnishings	Wholesale trade	Wholesale trade	4200	4232
Lumber and other construction materials	Wholesale trade	Wholesale trade	4200	4233
Metals and minerals (except petroleum)	Wholesale trade	Wholesale trade	4200	4235
Electrical goods	Wholesale trade	Wholesale trade	4200	4236
Hardware, and plumbing and heating equipment and supplies	Wholesale trade	Wholesale trade	4200	4237
Machinery, equipment, and supplies	Wholesale trade	Wholesale trade	4200	4238
Miscellaneous durable goods	Wholesale trade	Wholesale trade	4200	4239
Paper and paper products	Wholesale trade	Wholesale trade	4200	4241
Apparel, piece goods, and notions	Wholesale trade	Wholesale trade	4200	4243
Grocery and related products	Wholesale trade	Wholesale trade	4200	4244
Farm product raw materials	Wholesale trade	Wholesale trade	4200	4245
Chemical and allied products	Wholesale trade	Wholesale trade	4200	4246
Wholesale electronic markets and agents and brokers	Wholesale trade	Wholesale trade	4200	4251
Tobacco products	Other manufacturing	Other manufacturing	3100	3122
Nonmetallic mineral products	Other manufacturing	Other manufacturing	3200	3270
Clay products and refractories	Other manufacturing	Other manufacturing	3200	3271
Glass and glass products	Other manufacturing	Other manufacturing	3200	3272
Cement and concrete products	Other manufacturing	Other manufacturing	3200	3273

Sector-Names' Matching Table

Product-Line Name	Name used in Analysis	BEA-Industry Name	4-Digit Industry Code	World Bank Industry Code
Lime and gypsum products	Other manufacturing	3000	3200	3274
Other nonmetallic mineral products	Other manufacturing	3000	3200	3279
Furniture and related products	Other manufacturing	3000	3300	3370

References

- Kohl, T., Brakman, S., and Garretsen, H. (2016). Do Trade Agreements Stimulate International Trade Differently? Evidence from 296 Trade Agreements. *The World Economy*, 39(1):97–131. [3](#)
- Morin, J.-F., Dür, A., and Lechner, L. (2016). Mapping the Trade and Environment Nexus: Insights from a New Dataset. [3](#)
- Raess, D. and Sari, D. (2016). LABPTA: Labour Provisions in Trade Agreements. [3](#)
- Spilker, G. and Böhmelt, T. (2012). The impact of preferential trade agreements on governmental repression revisited. *The Review of International Organizations*, 8(3):343–361. [3](#)