

Online Resource 1

TABLE S1. Sample Exclusion Process

Preceding Interval	1962-1979		1938-1960	
	N	N excluded	N	N excluded
Total born in Sweden	1,951,202		2,491,059	
ID for both parents	1,927,677	23,525	2,210,012	281,047
All siblings born in Sweden	1,893,446	34,231	2,193,609	16,403
No multiple births	1,846,327	47,119	1,980,743	212,866
No half-siblings	1,347,819	498,508	1,735,140	245,603
Sibling group size >2	570,595	777,224	871,081	864,059
Males only	294,808	275,787	-	-
Outmigration or death before 1990	-	-	836,583	34,498
No first-borns	209,361	85,447	596,833	239,750
Cohort cut	125,340	84,021	581,544	15,289
Within-group variance in mortality	-	-	159,554	421,990
No missing values on model variables	~105,000	20,340	159,554	0
Final	~105,000		159,554	
Subsequent Interval	1962-1979		1938-1960	
	N	N excluded	N	N excluded
Total born in Sweden	1,951,202		2,491,059	
ID for both parents	1,927,677	23,525	2,210,012	281,047
All siblings born in Sweden	1,893,446	34,231	2,193,609	16,403
No multiple births	1,846,327	47,119	1,980,743	212,866
No half-siblings	1,347,819	498,508	1,735,140	245,603
Sibling group size >2	570,595	777,224	871,081	864,059
Males only	294,808	275,787	-	-
Outmigration or death before 1990	-	-	836,583	34,498
No last-borns	198,431	96,377	639,628	196,955
Cohort cut	132,618	65,813	606,515	33,113
Within-group variance in mortality	-	-	150,907	455,608
No missing values on model variables	~110,000	22,618	150,907	0
Final	~110,000		150,907	

Note: Final sample for 1962-1979 cohorts varies slightly by outcome variable.

TABLE S3. Descriptive Statistics: Length of the Preceding Birth Interval in Relation to Being Overweight or Obese at Ages 17-20, and Mortality at Ages 30-74.

		Preceding Birth Interval																	
		9-12	13-18	19-24	25-30	31-36	37-42	43-48	49-54	55-60	61-66	67-72	73-78	79-84	85-90	91-96	>96	Everyone	
Overweight or Obese	N	1,132	8,530	13,643	14,422	13,813	10,957	8,698	6,852	5,571	4,086	3,197	2,555	2,091	1,561	1,143	3,749	102,000	
	%	9.5	10.2	9.9	9.8	11.0	11.0	11.3	11.5	13.0	13.2	13.9	14.1	15.3	15.4	17.1	18.0	11.5	
	Mean	2.7	2.6	2.6	2.5	2.6	2.7	2.8	2.9	3.0	3.1	3.1	3.1	3.1	3.2	3.2	3.2	3.2	2.7
	Maternal age	25.0	26.3	26.7	27.0	27.5	28.2	28.8	29.6	30.3	30.8	31.3	31.7	32.4	32.8	33.3	34.8	34.8	28.6
	Birth year	1969.7	1970.1	1970.6	1971.0	1971.2	1971.2	1971.2	1971.2	1971.3	1971.3	1971.5	1971.8	1971.9	1972.2	1972.6	1972.8	1973.4	1971.2
	Sibling group size % by birth year	3.8	3.8	3.6	3.5	3.4	3.4	3.5	3.5	3.5	3.5	3.5	3.5	3.4	3.5	3.5	3.5	3.5	3.5
Mortality	1962-1964	7.7	9.6	7.7	7.7	13.6	4.5	5.7	2.4	10.0	0.0	0.0	0.0	0.0	25.0	0.0	33.3	8.0	
	1965-1969	8.1	9.7	8.8	8.5	9.9	9.8	10.0	9.8	12.5	11.5	12.0	10.8	13.3	15.4	16.9	16.6	10.0	
	1970-1974	11.2	9.3	9.7	10.0	10.8	10.9	11.1	11.8	12.0	13.5	14.5	13.7	14.8	13.7	17.1	17.3	11.5	
	1975-1979	10.2	13.1	12.7	11.7	12.6	13.1	13.8	13.5	15.0	14.9	15.1	17.9	18.0	17.9	17.2	19.1	13.9	
	Mortality rate (10 ⁻³)	1.22	1.20	1.18	1.25	1.23	1.24	1.21	1.22	1.22	1.12	1.16	1.16	1.09	1.06	1.00	0.95	0.84	1.18
	Deaths	659	6,322	7,366	6,230	5,038	3,982	3,269	2,586	2,586	2,041	1,659	1,349	1,026	822	596	477	1,635	45,057
Mortality	Person-time	1.4	13.8	16.2	13.0	10.7	8.4	7.0	5.5	4.8	3.7	3.0	3.0	2.5	2.0	1.6	1.3	5.1	100.0
	%	47.0	46.5	48.0	46.1	46.8	46.5	46.6	46.9	47.1	46.2	46.9	48.2	46.5	48.1	46.3	47.2	46.9	
	Birth order	3.1	3.3	3.3	3.3	3.2	3.2	3.2	3.2	3.2	3.2	3.2	3.2	3.3	3.3	3.3	3.3	3.3	3.2
	Maternal age	26.8	28.0	29.2	29.9	30.3	30.8	31.3	31.7	32.3	32.9	33.1	33.7	34.2	34.6	35.1	36.8	36.8	30.8
	Birth year	1947.0	1946.6	1946.8	1947.2	1947.7	1948.0	1948.4	1948.7	1949.2	1949.4	1949.7	1950.2	1950.7	1951.2	1951.6	1953.5	1948.2	
	Sibling group size	5.0	4.9	4.8	4.6	4.4	4.3	4.2	4.1	4.1	4.0	3.9	3.9	3.9	3.9	3.8	3.8	3.6	4.4
Rate by birth year	1938-1940	1.50	1.73	1.93	2.16	2.31	2.46	2.48	2.58	2.63	2.85	2.66	2.70	3.04	2.98	2.59	2.76	2.12	
	1941-1945	1.45	1.31	1.30	1.41	1.42	1.48	1.52	1.73	1.59	1.85	1.87	2.01	2.16	2.01	2.39	2.58	1.47	
	1946-1950	1.09	1.04	1.00	1.06	1.06	1.09	1.06	1.03	0.96	1.08	1.09	1.04	1.07	1.17	1.06	1.29	1.05	
	1951-1955	0.97	0.87	0.88	0.94	0.91	0.89	0.89	0.84	0.84	0.78	0.83	0.81	0.73	0.75	0.68	0.65	0.85	
1956-1960	0.97	1.00	0.88	0.91	0.88	0.89	0.86	0.83	0.70	0.56	0.65	0.53	0.62	0.49	0.61	0.54	0.77		

TABLE S4. Descriptive Statistics: Length of the Subsequent Birth Interval in Relation to Physical Fitness, Height, and Being Underweight or Severely Underweight at Ages 17-20.

	Subsequent Birth Interval																		
	9-12	13-18	19-24	25-30	31-36	37-42	43-48	49-54	55-60	61-66	67-72	73-78	79-84	85-90	91-96	>96	Everyone		
Physical Fitness	N	1,017	7,658	12,646	13,724	13,474	10,691	8,793	6,950	5,771	4,607	3,600	3,013	2,585	2,119	1,718	7,576	105,942	
	Mean fitness	294.4	298.5	301.7	302.2	302.3	301.5	302.4	301.4	299.8	301.5	300.8	302.3	301.5	299.5	299.4	299.7	301.2	
	Mean	1.6	1.6	1.5	1.5	1.5	1.6	1.7	1.8	1.9	2.0	2.1	2.1	2.1	2.1	2.2	2.2	1.7	
	Maternal age	23.9	25.1	24.9	24.8	24.7	24.9	25.1	25.2	25.4	25.6	25.5	25.6	25.5	25.6	25.6	25.2	25.1	
	Birth year	1969.4	1970.0	1970.6	1970.9	1971.0	1971.0	1971.1	1971.0	1971.0	1971.2	1971.0	1971.0	1971.1	1971.2	1971.2	1971.5	1971.4	1970.9
	Sibling group size	Mean	3.8	3.7	3.6	3.5	3.4	3.4	3.4	3.4	3.4	3.4	3.4	3.4	3.4	3.4	3.4	3.4	3.5
	Fitness by birth year	Mean	250.6	261.1	260.5	269.3	274.5	272.8	258.6	262.1	265.1	258.1	256.2	267.4	239.1	240.5	270.0	256.6	264.0
		Mean	290.4	291.2	294.7	295.6	296.7	293.7	297.3	294.8	294.1	295.6	294.7	296.3	294.3	295.3	292.6	291.7	294.7
		Mean	302.2	307.0	307.5	308.1	306.6	307.8	306.7	306.4	304.6	306.3	305.6	307.0	305.2	301.5	303.6	304.3	306.5
		Mean	1970-1974	1975-1979	1975-1979	1975-1979	1975-1979	1975-1979	1975-1979	1975-1979	1975-1979	1975-1979	1975-1979	1975-1979	1975-1979	1975-1979	1975-1979	1975-1979	1975-1979
Height (cm)	N	1,043	8,025	13,464	14,639	14,422	11,457	9,423	7,450	6,182	4,966	3,869	3,246	2,787	2,260	1,861	8,156	113,250	
	Mean height	178.6	179.4	179.8	179.6	179.6	179.5	179.6	179.5	179.5	179.4	179.4	179.4	179.3	179.5	179.1	179.3	179.5	
	Mean	1.6	1.6	1.5	1.5	1.5	1.6	1.7	1.8	1.9	2.0	2.0	2.1	2.1	2.1	2.2	2.2	1.7	
	Maternal age	23.9	25.1	25.0	24.8	24.7	24.9	25.1	25.3	25.5	25.6	25.6	25.6	25.6	25.6	25.6	25.2	25.1	
	Birth year	1969.6	1970.3	1971.0	1971.3	1971.4	1971.4	1971.5	1971.4	1971.4	1971.6	1971.5	1971.5	1971.6	1971.6	1971.6	1972.0	1971.8	1971.3
	Sibling group size	Mean	3.8	3.7	3.6	3.5	3.4	3.4	3.4	3.4	3.4	3.4	3.4	3.4	3.4	3.4	3.4	3.4	3.5
	Fitness by birth year	Mean	177.9	178.3	179.7	179.3	180.1	179.2	179.1	179.0	181.0	180.1	179.3	181.5	179.1	178.0	182.5	179.1	179.4
		Mean	1965-1969	178.3	179.2	179.4	179.4	179.3	179.3	179.2	179.4	179.1	179.2	179.1	178.9	179.3	179.1	178.9	179.2
		Mean	1970-1974	178.9	179.8	179.8	179.8	179.7	179.7	179.6	179.4	179.5	179.7	179.6	179.5	179.9	179.2	179.5	179.7
		Mean	1975-1979	179.1	179.4	180.1	179.8	179.8	179.7	179.7	179.8	179.6	179.5	179.4	179.3	179.5	179.1	179.3	179.7
Underweight or Severely Underweight	N	997	7,688	12,885	14,012	13,782	10,973	8,965	7,082	5,907	4,727	3,653	3,070	2,648	2,142	1,772	7,721	108,024	
	%	6.8	7.2	7.3	7.1	7.1	7.3	7.3	7.0	7.0	6.8	6.7	6.1	6.6	7.4	6.5	7.21	108.024	
	Mean	1.6	1.6	1.5	1.5	1.5	1.6	1.7	1.8	1.9	2.0	2.1	2.1	2.1	2.1	2.2	2.2	1.7	
	Maternal age	24.0	25.1	25.0	24.8	24.8	24.9	25.1	25.3	25.5	25.6	25.6	25.6	25.6	25.6	25.7	25.2	25.1	
	Birth year	1969.5	1970.2	1970.9	1971.2	1971.3	1971.3	1971.4	1971.3	1971.3	1971.5	1971.3	1971.4	1971.5	1971.5	1971.9	1971.7	1971.2	
	Sibling group size	Mean	3.8	3.7	3.6	3.5	3.4	3.4	3.4	3.4	3.4	3.4	3.4	3.4	3.4	3.4	3.4	3.4	3.5
	% by birth year	Mean	12.5	11.7	10.6	10.6	10.6	10.0	10.0	8.9	8.0	8.0	12.5	12.5	11.1	20.0	6.6	7.0	7.7
		Mean	1965-1964	6.1	8.5	7.9	7.4	7.2	8.0	7.4	7.0	7.9	7.2	6.4	6.6	7.0	6.6	7.2	7.5
		Mean	1970-1974	7.9	6.7	7.4	7.2	7.5	7.5	8.4	6.4	7.1	6.6	6.6	7.5	9.4	5.7	6.5	7.3
		Mean	1975-1979	6.4	4.6	6.3	6.6	6.2	7.1	5.1	5.4	5.9	5.4	5.1	5.8	5.2	7.4	5.0	6.0

TABLE S5. Descriptive Statistics: Length of the Subsequent Birth Interval in Relation to Being Overweight or Obese at Ages 17-20, and Mortality at Ages 30-74.

	Subsequent Birth Interval														>96	Everyone			
	9-12	13-18	19-24	25-30	31-36	37-42	43-48	49-54	55-60	61-66	67-72	73-78	79-84	85-90			91-96		
Overweight or Obese	N	997	7,688	12,885	14,012	13,782	10,973	8,965	7,082	5,907	4,727	3,653	3,070	2,648	2,142	1,772	7,721	108,024	
	%	11.7	10.9	10.3	10.8	10.5	10.9	10.8	11.2	11.2	10.7	10.8	10.3	11.4	10.4	11.3	10.8	11.1	10.8
	Mean	1.6	1.6	1.5	1.5	1.5	1.6	1.7	1.7	1.8	1.9	2.0	2.1	2.1	2.1	2.1	2.2	2.2	1.7
	Maternal age	24.0	25.1	25.0	24.8	24.8	24.9	25.1	25.3	25.3	25.5	25.6	25.6	25.6	25.6	25.6	25.7	25.2	25.1
	Birth year	1969.5	1970.2	1970.9	1971.2	1971.3	1971.3	1971.4	1971.3	1971.3	1971.3	1971.5	1971.3	1971.4	1971.5	1971.5	1971.9	1971.7	1971.2
Sibling group size % by birth year	3.8	3.7	3.6	3.5	3.4	3.4	3.4	3.4	3.4	3.4	3.4	3.4	3.4	3.4	3.4	3.4	3.4	3.5	
1962-1964	0.0	5.8	6.2	10.9	7.3	7.7	8.0	14.3	14.3	13.3	8.0	0.0	18.8	0.0	0.0	20.0	11.6	8.4	
1965-1969	10.9	9.6	9.3	9.6	9.6	9.7	9.8	9.4	9.4	8.8	9.1	8.9	9.9	9.1	9.6	9.6	9.9	9.5	
1970-1974	12.9	11.1	9.8	10.9	10.0	10.3	9.9	11.7	11.7	9.9	10.8	10.0	10.0	9.6	11.3	10.3	10.4	10.4	
1975-1979	12.8	14.2	12.8	12.6	12.6	13.3	13.2	13.0	13.0	14.1	13.0	13.0	14.8	13.0	13.7	12.3	13.4	13.1	
Mortality	(10 ⁻³)	1.25	1.32	1.37	1.41	1.46	1.49	1.56	1.52	1.60	1.61	1.59	1.58	1.64	1.66	1.63	1.68	1.47	
Deaths	624	6,352	7,658	6,287	5,374	4,337	3,758	3,758	2,943	2,606	2,125	1,689	1,398	1,215	980	843	3,820	52,009	
Person-time	%	1.4	13.6	15.9	12.6	10.4	8.2	6.8	5.5	4.6	3.7	3.0	2.5	2.1	1.7	1.5	6.4	100.0	
Sex	%	49.5	47.3	46.5	46.7	47.2	46.3	45.9	45.3	43.4	45.6	44.4	46.5	45.4	45.2	46.4	45.8	46.3	
Birth order	Mean	2.0	2.2	2.3	2.3	2.2	2.2	2.2	2.3	2.3	2.4	2.4	2.5	2.5	2.5	2.5	2.5	2.285	
Maternal age	Mean	25.6	26.5	27.2	27.5	27.4	27.6	27.6	27.6	27.7	27.9	27.7	27.8	27.7	27.7	27.7	27.7	27.338	
Birth year	Mean	1946.5	1945.8	1945.7	1945.8	1946.0	1946.0	1946.1	1946.3	1946.4	1946.4	1946.6	1946.7	1946.9	1946.9	1947.0	1947.1	1946.121	
Sibling group size	Mean	4.9	4.8	4.7	4.5	4.4	4.2	4.1	4.1	4.0	4.0	3.9	3.9	3.9	3.8	3.8	3.7	4.346	
Rate by birth year	1938-1940	1.65	1.73	1.79	1.89	1.98	2.02	2.27	2.31	2.51	2.48	2.57	2.50	2.68	2.87	2.65	3.07	2.08	
1941-1945	1.31	1.39	1.44	1.51	1.55	1.60	1.61	1.61	1.60	1.73	1.78	1.79	1.73	1.84	1.87	1.95	1.94	1.57	
1946-1950	1.32	1.11	1.20	1.17	1.30	1.28	1.31	1.27	1.27	1.30	1.33	1.26	1.30	1.37	1.20	1.17	1.28	1.24	
1951-1955	0.87	1.10	1.07	1.12	1.12	1.16	1.19	1.11	1.11	1.22	1.13	1.09	1.20	1.16	1.22	1.23	1.31	1.14	
1956-1960	0.85	1.07	1.07	1.07	1.14	1.13	1.28	1.18	1.18	1.14	1.10	1.17	1.14	1.19	1.43	1.24	1.28	1.14	

TABLE S6. Results: Relationship Between Preceding Birth Interval and Physical Fitness for Swedish Men Born 1962-1979. Estimates for Age at Conscription Test and Year of Conscription Test Not Shown.

		Within-family			Between-family		
		Beta	SE	95% CI	Beta	SE	95% CI
Preceding Interval Length	9-12	-0.013	0.047	-0.105, 0.079	-0.010	0.029	-0.067, 0.047
	13-18	-0.054	0.022	-0.096, -0.011	-0.015	0.013	-0.041, 0.011
	19-24	-0.054	0.019	-0.092, -0.016	-0.003	0.012	-0.026, 0.020
	25-30 (ref)	0.000			0.000		
	31-36	-0.061	0.020	-0.100, -0.022	-0.034	0.012	-0.057, -0.011
	37-42	-0.048	0.021	-0.090, -0.006	-0.058	0.012	-0.082, -0.034
	43-48	-0.061	0.023	-0.106, -0.016	-0.078	0.013	-0.104, -0.052
	49-54	-0.053	0.025	-0.103, -0.004	-0.083	0.015	-0.112, -0.055
	55-60	-0.041	0.028	-0.095, 0.013	-0.102	0.015	-0.132, -0.071
	61-66	-0.112	0.031	-0.174, -0.051	-0.109	0.017	-0.143, -0.075
	67-72	-0.067	0.036	-0.137, 0.004	-0.126	0.020	-0.165, -0.087
	73-78	-0.075	0.039	-0.152, 0.002	-0.140	0.021	-0.182, -0.099
	79-84	-0.073	0.044	-0.160, 0.014	-0.168	0.024	-0.214, -0.121
	85-90	-0.070	0.050	-0.168, 0.028	-0.177	0.026	-0.228, -0.126
Birth Order	91-96	0.011	0.058	-0.102, 0.125	-0.154	0.030	-0.213, -0.095
	97+	-0.040	0.044	-0.126, 0.045	-0.190	0.020	-0.228, -0.151
	2 (ref)	0.000			0.000		
	3	-0.066	0.020	-0.105, -0.026	-0.116	0.007	-0.131, -0.102
	4	-0.056	0.039	-0.133, 0.021	-0.189	0.014	-0.215, -0.162
	5	-0.136	0.060	-0.254, -0.018	-0.264	0.025	-0.312, -0.215
	6	-0.189	0.083	-0.352, -0.026	-0.310	0.037	-0.383, -0.236
Maternal Age	7+	-0.129	0.109	-0.342, 0.084	-0.291	0.048	-0.385, -0.198
	15-19	-0.099	0.065	-0.227, 0.028	-0.336	0.033	-0.402, -0.271
	20-24	0.006	0.021	-0.035, 0.048	-0.157	0.009	-0.174, -0.140
	25-29 (ref)	0.000			0.000		
	30-34	0.002	0.021	-0.038, 0.043	0.102	0.008	0.085, 0.118
	35-39	-0.029	0.040	-0.106, 0.049	0.122	0.013	0.097, 0.147
	40-44	-0.091	0.070	-0.228, 0.047	0.098	0.026	0.047, 0.150
Birth Year	45+	0.042	0.194	-0.337, 0.421	0.057	0.109	-0.156, 0.270
	1962	-0.924	0.764	-2.421, 0.574	-0.338	0.208	-0.747, 0.070
	1963	-1.197	0.250	-1.686, -0.707	-0.804	0.134	-1.067, -0.542
	1964	-0.771	0.166	-1.097, -0.445	-0.472	0.093	-0.655, -0.290
	1965	-0.576	0.144	-0.860, -0.293	-0.354	0.083	-0.517, -0.191
	1966	-0.330	0.119	-0.563, -0.096	-0.205	0.071	-0.344, -0.065
	1967	-0.253	0.100	-0.448, -0.057	-0.170	0.060	-0.288, -0.053
	1968	-0.310	0.076	-0.458, -0.161	-0.253	0.046	-0.343, -0.163
	1969	-0.091	0.054	-0.197, 0.014	-0.133	0.034	-0.200, -0.067
	1970 (ref)	0.000			0.000		
	1971	-0.072	0.049	-0.168, 0.023	-0.095	0.032	-0.158, -0.032
	1972	0.014	0.068	-0.119, 0.147	-0.036	0.044	-0.123, 0.051
	1973	-0.017	0.085	-0.183, 0.149	-0.026	0.054	-0.133, 0.080
	1974	0.006	0.101	-0.191, 0.204	-0.014	0.063	-0.138, 0.109
	1975	0.199	0.116	-0.028, 0.426	0.196	0.071	0.056, 0.336
1976	0.344	0.133	0.084, 0.604	0.388	0.080	0.231, 0.545	
1977	0.527	0.156	0.222, 0.832	0.570	0.090	0.393, 0.746	
1978	0.683	0.181	0.328, 1.038	0.770	0.102	0.570, 0.970	
1979	0.841	0.225	0.400, 1.283	0.813	0.120	0.578, 1.048	
Sibling Group Size	3 (ref)				0.000		
	4				-0.038	0.009	-0.056, -0.020
	5				-0.100	0.017	-0.133, -0.068
	6				-0.105	0.027	-0.157, -0.053
	7				-0.154	0.034	-0.221, -0.087
N		100,647			100,647		

TABLE S7. Results: Relationship Between Subsequent Birth Interval and Physical Fitness for Swedish Men Born 1962-1979. Estimates for Age at Conscription Test and Year of Conscription Test Not Shown.

		Within-family			Between-family		
		Beta	SE	95% CI	Beta	SE	95% CI
Subsequent Interval Length	9-12	0.016	0.046	-0.074, 0.107	-0.072	0.032	-0.135, -0.008
	13-18	0.016	0.022	-0.027, 0.058	-0.020	0.014	-0.047, 0.007
	19-24	0.014	0.018	-0.022, 0.050	0.007	0.012	-0.016, 0.030
	25-30 (ref)	0.000			0.000		
	31-36	0.001	0.018	-0.035, 0.037	-0.005	0.012	-0.028, 0.018
	37-42	0.009	0.020	-0.029, 0.048	-0.016	0.012	-0.040, 0.008
	43-48	0.008	0.022	-0.034, 0.051	-0.003	0.013	-0.029, 0.023
	49-54	0.004	0.024	-0.042, 0.051	-0.009	0.014	-0.037, 0.019
	55-60	-0.008	0.025	-0.058, 0.042	-0.031	0.015	-0.061, -0.001
	61-66	0.037	0.027	-0.017, 0.091	-0.007	0.017	-0.040, 0.026
	67-72	0.018	0.031	-0.042, 0.078	-0.014	0.018	-0.050, 0.022
	73-78	0.011	0.033	-0.052, 0.075	0.007	0.020	-0.031, 0.046
	79-84	0.036	0.035	-0.033, 0.105	0.006	0.021	-0.035, 0.048
	85-90	0.011	0.038	-0.065, 0.086	-0.037	0.023	-0.082, 0.008
Birth Order	91-96	0.021	0.041	-0.059, 0.100	-0.043	0.024	-0.091, 0.004
	97+	-0.001	0.024	-0.048, 0.046	-0.033	0.014	-0.061, -0.005
	1	0.000	0.021	-0.041, 0.041	0.069	0.007	0.055, 0.082
	2 (ref)	0.000			0.000		
	3	-0.024	0.024	-0.072, 0.024	-0.083	0.012	-0.107, -0.059
	4	0.021	0.048	-0.074, 0.116	-0.161	0.024	-0.208, -0.113
	5	-0.072	0.078	-0.225, 0.081	-0.214	0.043	-0.298, -0.130
Maternal Age	6	-0.074	0.113	-0.297, 0.148	-0.235	0.059	-0.351, -0.119
	15-19	-0.006	0.033	-0.070, 0.059	-0.256	0.013	-0.282, -0.230
	20-24	0.009	0.017	-0.024, 0.042	-0.139	0.007	-0.153, -0.125
	25-29 (ref)	0.000			0.000		
	30-34	-0.002	0.022	-0.046, 0.041	0.034	0.010	0.014, 0.055
	35-39	0.051	0.059	-0.065, 0.166	0.001	0.024	-0.045, 0.048
Birth Year	40-44	0.291	0.197	-0.096, 0.678	-0.054	0.083	-0.217, 0.109
	45+				-0.075	0.032	-0.139, -0.012
	1962	-0.272	0.824	-1.886, 1.343	-0.040	0.232	-0.494, 0.415
	1963	-1.312	0.260	-1.822, -0.801	-0.894	0.123	-1.136, -0.652
	1964	-0.677	0.157	-0.984, -0.370	-0.477	0.088	-0.650, -0.303
	1965	-0.727	0.133	-0.987, -0.466	-0.388	0.079	-0.543, -0.233
	1966	-0.432	0.108	-0.644, -0.221	-0.228	0.068	-0.362, -0.094
	1967	-0.337	0.086	-0.506, -0.169	-0.186	0.057	-0.298, -0.074
	1968	-0.436	0.066	-0.566, -0.306	-0.292	0.046	-0.381, -0.203
	1969	-0.190	0.047	-0.282, -0.098	-0.140	0.034	-0.206, -0.074
	1970 (ref)	0.000			0.000		
	1971	-0.056	0.044	-0.142, 0.030	-0.108	0.031	-0.169, -0.047
	1972	0.093	0.061	-0.027, 0.212	-0.011	0.043	-0.095, 0.073
	1973	0.068	0.075	-0.080, 0.215	-0.007	0.052	-0.108, 0.094
1974	0.106	0.090	-0.070, 0.283	0.015	0.061	-0.103, 0.134	
1975	0.345	0.104	0.142, 0.548	0.189	0.069	0.055, 0.324	
1976	0.489	0.118	0.257, 0.721	0.418	0.076	0.269, 0.567	
1977	0.639	0.137	0.370, 0.908	0.623	0.085	0.456, 0.790	
1978	0.885	0.159	0.573, 1.198	0.862	0.096	0.673, 1.051	
1979	1.015	0.200	0.622, 1.407	0.914	0.113	0.693, 1.135	
Sibling Group Size	3 (ref)				0.000		
	4				-0.056	0.009	-0.074, -0.038
	5				-0.132	0.017	-0.165, -0.100
	6				-0.133	0.028	-0.188, -0.079
	7				-0.171	0.035	-0.241, -0.102
N		105,942			105,942		

TABLE S8. Results: Relationship Between Preceding Birth Interval and Height for Swedish Men Born 1962-1979. Estimates for Age at Conscription Test and Year of Conscription Test Not Shown.

		Within-family			Between-family			
		Beta	SE	95% CI	Beta	SE	95% CI	
Preceding Interval Length	9-12	-0.033	0.038	-0.107, 0.042	-0.030	0.030	-0.088, 0.028	
	13-18	-0.011	0.017	-0.045, 0.024	0.006	0.013	-0.020, 0.031	
	19-24	-0.004	0.016	-0.034, 0.027	0.015	0.011	-0.007, 0.037	
	25-30 (ref)	0.000			0.000			
	31-36	-0.015	0.016	-0.047, 0.016	-0.016	0.011	-0.038, 0.006	
	37-42	-0.018	0.017	-0.052, 0.016	-0.029	0.012	-0.052, -0.005	
	43-48	-0.012	0.018	-0.048, 0.024	-0.035	0.013	-0.060, -0.010	
	49-54	0.020	0.020	-0.020, 0.059	-0.027	0.014	-0.054, 0.001	
	55-60	0.013	0.022	-0.030, 0.057	-0.051	0.015	-0.080, -0.021	
	61-66	0.016	0.025	-0.033, 0.065	-0.055	0.017	-0.088, -0.022	
	67-72	0.011	0.028	-0.044, 0.067	-0.024	0.019	-0.061, 0.014	
	73-78	-0.009	0.031	-0.069, 0.052	-0.057	0.021	-0.097, -0.016	
	79-84	-0.008	0.035	-0.077, 0.061	-0.092	0.023	-0.137, -0.047	
	85-90	-0.011	0.039	-0.088, 0.066	-0.070	0.025	-0.118, -0.022	
91-96	0.075	0.045	-0.013, 0.163	-0.026	0.029	-0.082, 0.031		
97+	0.011	0.034	-0.056, 0.077	-0.112	0.018	-0.148, -0.076		
Birth Order	2 (ref)	0.000			0.000			
	3	-0.048	0.016	-0.079, -0.017	-0.070	0.007	-0.083, -0.057	
	4	-0.074	0.031	-0.135, -0.013	-0.140	0.013	-0.166, -0.115	
	5	-0.108	0.048	-0.202, -0.014	-0.184	0.023	-0.229, -0.138	
	6	-0.098	0.066	-0.228, 0.032	-0.225	0.036	-0.295, -0.155	
	7	0.031	0.087	-0.139, 0.202	-0.286	0.052	-0.388, -0.185	
	Maternal Age	15-19	-0.025	0.053	-0.128, 0.079	-0.340	0.034	-0.408, -0.273
20-24	0.013	0.017	-0.021, 0.046	-0.142	0.008	-0.158, -0.125		
25-29 (ref)	0.000			0.000				
Maternal Age	30-34	-0.009	0.017	-0.041, 0.024	0.110	0.008	0.095, 0.126	
	35-39	-0.028	0.032	-0.090, 0.034	0.156	0.013	0.131, 0.181	
	40-44	-0.064	0.056	-0.173, 0.046	0.154	0.025	0.105, 0.203	
	45+	-0.064	0.152	-0.363, 0.234	0.182	0.092	0.002, 0.362	
	Birth Year	1962	0.213	0.640	-1.041, 1.467	0.654	0.352	-0.037, 1.344
		1963	-0.064	0.208	-0.471, 0.344	0.298	0.152	0.001, 0.596
1964		-0.014	0.136	-0.281, 0.253	0.447	0.094	0.263, 0.631	
1965		0.072	0.118	-0.159, 0.304	0.423	0.082	0.262, 0.584	
1966		0.025	0.098	-0.167, 0.217	0.318	0.069	0.182, 0.453	
1967		0.016	0.082	-0.144, 0.176	0.275	0.059	0.160, 0.389	
1968		-0.016	0.062	-0.138, 0.106	0.225	0.045	0.136, 0.314	
1969		-0.020	0.044	-0.107, 0.067	0.108	0.034	0.041, 0.174	
1970 (ref)		0.000			0.000			
1971		0.022	0.040	-0.056, 0.100	0.010	0.031	-0.052, 0.071	
1972		-0.021	0.055	-0.129, 0.087	-0.118	0.042	-0.202, -0.035	
1973		-0.074	0.068	-0.208, 0.060	-0.204	0.052	-0.306, -0.102	
1974		-0.096	0.081	-0.255, 0.063	-0.273	0.060	-0.391, -0.155	
1975		-0.116	0.093	-0.298, 0.066	-0.338	0.068	-0.471, -0.204	
1976	-0.081	0.106	-0.288, 0.127	-0.330	0.076	-0.479, -0.181		
1977	-0.047	0.122	-0.285, 0.192	-0.367	0.085	-0.533, -0.200		
1978	0.085	0.137	-0.183, 0.353	-0.275	0.093	-0.457, -0.093		
1979	0.082	0.158	-0.228, 0.392	-0.309	0.104	-0.512, -0.105		
Sibling Group Size	3 (ref)				0.000			
	4				-0.026	0.009	-0.044, -0.008	
	5				-0.056	0.017	-0.089, -0.024	
	6				-0.082	0.026	-0.133, -0.031	
	7				-0.084	0.036	-0.155, -0.013	
N		107,510			107,510			

TABLE S9. Results: Relationship Between Subsequent Birth Interval and Height for Swedish Men Born 1962-1979. Estimates for Age at Conscription Test and Year of Conscription Test Not Shown.

		Within-family			Between-family		
		Beta	SE	95% CI	Beta	SE	95% CI
Subsequent Interval Length	9-12	-0.062	0.038	-0.136, 0.011	-0.103	0.031	-0.164, -0.041
	13-18	-0.025	0.017	-0.059, 0.009	-0.022	0.014	-0.049, 0.005
	19-24	-0.007	0.015	-0.036, 0.022	0.025	0.012	0.002, 0.048
	25-30 (ref)	0.000			0.000		
	31-36	-0.011	0.015	-0.039, 0.018	-0.001	0.011	-0.024, 0.021
	37-42	-0.006	0.016	-0.036, 0.025	-0.012	0.012	-0.036, 0.012
	43-48	0.017	0.017	-0.017, 0.050	-0.004	0.013	-0.030, 0.021
	49-54	0.000	0.019	-0.037, 0.037	-0.011	0.014	-0.038, 0.016
	55-60	0.003	0.020	-0.036, 0.042	-0.005	0.015	-0.035, 0.024
	61-66	-0.022	0.022	-0.065, 0.020	-0.021	0.016	-0.052, 0.011
	67-72	-0.029	0.024	-0.076, 0.018	-0.012	0.018	-0.047, 0.023
	73-78	-0.014	0.026	-0.065, 0.036	-0.026	0.019	-0.064, 0.011
	79-84	-0.050	0.028	-0.105, 0.004	-0.039	0.021	-0.079, 0.001
	85-90	-0.015	0.030	-0.075, 0.044	0.001	0.022	-0.042, 0.045
91-96	-0.018	0.032	-0.081, 0.045	-0.056	0.024	-0.104, -0.009	
97+	-0.020	0.019	-0.057, 0.017	-0.027	0.014	-0.054, 0.000	
Birth Order	1	0.033	0.016	0.001, 0.065	0.055	0.007	0.042, 0.068
	2 (ref)	0.000			0.000		
	3	-0.024	0.019	-0.061, 0.014	-0.065	0.011	-0.087, -0.042
	4	-0.014	0.038	-0.089, 0.061	-0.151	0.023	-0.197, -0.105
	5	-0.088	0.061	-0.207, 0.032	-0.165	0.041	-0.245, -0.084
	6	-0.119	0.089	-0.294, 0.056	-0.273	0.061	-0.393, -0.154
Maternal Age	15-19	0.021	0.026	-0.030, 0.072	-0.240	0.013	-0.266, -0.213
	20-24	-0.006	0.014	-0.033, 0.020	-0.124	0.007	-0.137, -0.110
	25-29 (ref)	0.000			0.000		
	30-34	0.025	0.017	-0.009, 0.059	0.079	0.010	0.059, 0.099
	35-39	0.015	0.046	-0.074, 0.105	0.068	0.024	0.022, 0.115
	40-44	0.028	0.153	-0.272, 0.329	0.012	0.083	-0.150, 0.175
45+				0.200	0.034	0.134, 0.267	
Birth Year	1962	0.219	0.687	-1.127, 1.565	0.647	0.381	-0.099, 1.393
	1963	0.112	0.215	-0.310, 0.534	0.090	0.139	-0.182, 0.362
	1964	0.211	0.129	-0.041, 0.463	0.450	0.089	0.275, 0.625
	1965	0.180	0.109	-0.034, 0.394	0.386	0.078	0.233, 0.540
	1966	0.111	0.089	-0.063, 0.284	0.318	0.066	0.189, 0.448
	1967	0.140	0.071	0.002, 0.279	0.257	0.056	0.147, 0.367
	1968	0.052	0.055	-0.055, 0.160	0.171	0.045	0.084, 0.258
	1969	0.003	0.039	-0.073, 0.079	0.085	0.033	0.020, 0.151
	1970 (ref)	0.000			0.000		
	1971	0.035	0.036	-0.036, 0.106	-0.047	0.031	-0.107, 0.014
	1972	-0.012	0.050	-0.110, 0.086	-0.132	0.042	-0.213, -0.050
	1973	-0.042	0.061	-0.162, 0.078	-0.196	0.050	-0.295, -0.097
	1974	-0.022	0.073	-0.164, 0.121	-0.246	0.059	-0.362, -0.131
	1975	-0.015	0.083	-0.178, 0.147	-0.325	0.067	-0.457, -0.194
1976	0.035	0.094	-0.149, 0.219	-0.286	0.074	-0.431, -0.141	
1977	0.033	0.106	-0.176, 0.242	-0.320	0.082	-0.480, -0.160	
1978	0.081	0.119	-0.153, 0.314	-0.226	0.089	-0.400, -0.051	
1979	0.034	0.139	-0.238, 0.307	-0.245	0.100	-0.441, -0.050	
Sibling Group Size	3 (ref)				0.000		
	4				-0.025	0.009	-0.043, -0.007
	5				-0.043	0.017	-0.077, -0.009
	6				-0.094	0.028	-0.148, -0.040
	7				-0.061	0.037	-0.134, 0.013
N		113,250			113,250		

TABLE S10. Results: Relationship Between Preceding Birth Interval and Being Overweight or Obese for Swedish Men Born 1962-1979. Estimates for Age at Conscription Test and Year of Conscription Test Not Shown.

		Within-family			Between-family		
		Beta	SE	95% CI	Beta	SE	95% CI
Preceding Interval Length	9-12	-0.015	0.017	-0.048, 0.018	-0.008	0.009	-0.026, 0.010
	13-18	-0.001	0.008	-0.016, 0.014	0.002	0.004	-0.006, 0.010
	19-24	0.004	0.007	-0.010, 0.017	0.001	0.004	-0.006, 0.008
	25-30 (ref)	0.000			0.000		
	31-36	0.014	0.007	0.000, 0.028	0.012	0.004	0.005, 0.019
	37-42	0.014	0.008	-0.001, 0.029	0.013	0.004	0.005, 0.020
	43-48	0.004	0.008	-0.012, 0.020	0.016	0.004	0.008, 0.024
	49-54	0.000	0.009	-0.017, 0.018	0.018	0.005	0.009, 0.027
	55-60	0.021	0.010	0.002, 0.040	0.033	0.005	0.023, 0.043
	61-66	0.017	0.011	-0.005, 0.039	0.036	0.006	0.024, 0.047
	67-72	0.034	0.013	0.009, 0.059	0.042	0.007	0.029, 0.055
	73-78	0.027	0.014	-0.001, 0.054	0.044	0.007	0.030, 0.059
	79-84	0.062	0.016	0.031, 0.093	0.057	0.008	0.040, 0.073
	85-90	0.020	0.018	-0.015, 0.054	0.057	0.010	0.038, 0.076
91-96	0.022	0.020	-0.018, 0.062	0.075	0.011	0.052, 0.097	
97+	0.039	0.015	0.009, 0.068	0.084	0.007	0.070, 0.098	
Birth Order	2 (ref)	0.000			0.000		
	3	0.007	0.007	-0.007, 0.021	0.023	0.002	0.019, 0.028
	4	0.021	0.014	-0.007, 0.048	0.050	0.005	0.041, 0.059
	5	0.017	0.021	-0.025, 0.059	0.073	0.008	0.056, 0.089
	6	0.041	0.030	-0.017, 0.099	0.090	0.013	0.064, 0.115
	7	0.001	0.039	-0.075, 0.077	0.122	0.017	0.090, 0.154
	Maternal Age	15-19	-0.011	0.024	-0.058, 0.036	0.028	0.011
20-24	-0.006	0.008	-0.021, 0.009	0.032	0.003	0.027, 0.038	
25-29 (ref)	0.000			0.000			
	30-34	-0.003	0.007	-0.017, 0.012	-0.020	0.003	-0.025, -0.015
	35-39	-0.004	0.014	-0.032, 0.024	-0.026	0.004	-0.034, -0.018
	40-44	-0.034	0.025	-0.082, 0.015	-0.042	0.008	-0.059, -0.025
	45+	0.101	0.070	-0.035, 0.238	-0.063	0.032	-0.126, 0.000
Birth Year	1962	0.015	0.272	-0.519, 0.549	-0.127	0.138	-0.398, 0.145
	1963	0.052	0.094	-0.133, 0.236	-0.120	0.048	-0.215, -0.025
	1964	-0.015	0.060	-0.132, 0.103	-0.122	0.028	-0.178, -0.067
	1965	-0.020	0.052	-0.122, 0.082	-0.093	0.026	-0.143, -0.043
	1966	0.002	0.043	-0.083, 0.086	-0.064	0.022	-0.108, -0.021
	1967	-0.023	0.036	-0.094, 0.047	-0.056	0.019	-0.093, -0.020
	1968	-0.019	0.027	-0.073, 0.035	-0.043	0.014	-0.071, -0.015
	1969	-0.020	0.019	-0.058, 0.018	-0.031	0.010	-0.051, -0.011
	1970 (ref)	0.000			0.000		
	1971	0.017	0.018	-0.018, 0.051	0.031	0.010	0.012, 0.049
	1972	0.036	0.024	-0.012, 0.084	0.054	0.013	0.027, 0.080
	1973	0.020	0.030	-0.039, 0.080	0.059	0.017	0.027, 0.092
	1974	0.042	0.036	-0.029, 0.112	0.080	0.020	0.042, 0.118
	1975	0.050	0.041	-0.031, 0.130	0.098	0.022	0.054, 0.141
1976	0.054	0.047	-0.038, 0.146	0.098	0.025	0.049, 0.147	
1977	0.110	0.054	0.004, 0.217	0.107	0.028	0.052, 0.163	
1978	0.127	0.061	0.007, 0.248	0.106	0.031	0.044, 0.167	
1979	0.084	0.072	-0.057, 0.226	0.110	0.036	0.040, 0.181	
Sibling Group Size	3 (ref)				0.000		
	4				-0.005	0.003	-0.010, 0.001
	5				-0.009	0.005	-0.019, 0.001
	6				-0.018	0.008	-0.035, -0.002
	7				-0.039	0.010	-0.060, -0.019
N		102,000			102,000		

TABLE S11. Results: Relationship Between Subsequent Birth Interval and Being Overweight or Obese for Swedish Men Born 1962-1979. Estimates for Age at Conscriptioin Test and Year of Conscriptioin Test Not Shown.

		Within-family			Between-family		
		Beta	SE	95% CI	Beta	SE	95% CI
Subsequent Interval Length	9-12	0.014	0.016	-0.018, 0.045	0.010	0.011	-0.010, 0.031
	13-18	-0.007	0.007	-0.021, 0.008	0.005	0.004	-0.004, 0.013
	19-24	-0.008	0.006	-0.021, 0.004	-0.004	0.004	-0.012, 0.003
	25-30 (ref)	0.000			0.000		
	31-36	-0.004	0.006	-0.016, 0.009	-0.004	0.004	-0.011, 0.003
	37-42	-0.008	0.007	-0.021, 0.006	-0.001	0.004	-0.009, 0.007
	43-48	-0.001	0.007	-0.015, 0.013	-0.002	0.004	-0.011, 0.006
	49-54	0.012	0.008	-0.004, 0.028	0.002	0.005	-0.007, 0.012
	55-60	-0.008	0.009	-0.025, 0.009	-0.003	0.005	-0.013, 0.006
	61-66	0.000	0.009	-0.018, 0.019	-0.002	0.005	-0.013, 0.008
	67-72	-0.014	0.010	-0.034, 0.007	-0.007	0.006	-0.018, 0.005
	73-78	0.012	0.011	-0.010, 0.033	0.004	0.006	-0.009, 0.016
	79-84	-0.009	0.012	-0.032, 0.014	-0.008	0.007	-0.021, 0.005
	85-90	0.006	0.013	-0.019, 0.032	0.002	0.007	-0.012, 0.017
Birth Order	91-96	0.010	0.014	-0.017, 0.036	-0.005	0.008	-0.020, 0.011
	97+	0.000	0.008	-0.016, 0.016	-0.002	0.005	-0.012, 0.007
	1	0.023	0.007	0.009, 0.037	-0.006	0.002	-0.010, -0.001
	2 (ref)	0.000			0.000		
	3	-0.004	0.008	-0.020, 0.012	0.025	0.004	0.017, 0.033
	4	-0.003	0.016	-0.035, 0.029	0.040	0.008	0.024, 0.055
	5	-0.018	0.026	-0.069, 0.033	0.051	0.014	0.023, 0.078
Maternal Age	6	0.005	0.038	-0.069, 0.080	0.072	0.020	0.032, 0.111
	15-19	0.012	0.011	-0.010, 0.034	0.065	0.005	0.056, 0.074
	20-24	0.007	0.006	-0.004, 0.018	0.030	0.002	0.026, 0.034
	25-29	0.000			0.000		
	30-34	-0.007	0.007	-0.021, 0.008	-0.007	0.003	-0.013, -0.001
	35-39	-0.029	0.020	-0.067, 0.010	0.004	0.008	-0.011, 0.019
	40-44	-0.019	0.065	-0.145, 0.108	0.017	0.030	-0.041, 0.075
Birth Year	45+				-0.085	0.006	-0.097, -0.074
	1962	-0.071	0.279	-0.619, 0.476	-0.024	0.157	-0.332, 0.284
	1963	-0.093	0.091	-0.270, 0.085	-0.035	0.045	-0.123, 0.053
	1964	-0.023	0.054	-0.128, 0.083	-0.053	0.027	-0.106, 0.001
	1965	-0.002	0.046	-0.091, 0.087	-0.026	0.025	-0.075, 0.023
	1966	0.017	0.037	-0.056, 0.089	-0.021	0.021	-0.063, 0.021
	1967	0.017	0.030	-0.041, 0.075	-0.009	0.018	-0.045, 0.027
	1968	0.016	0.023	-0.029, 0.061	-0.008	0.014	-0.036, 0.020
	1969	0.030	0.016	-0.002, 0.062	0.010	0.011	-0.012, 0.031
	1970 (ref)	0.000			0.000		
	1971	0.002	0.015	-0.027, 0.032	0.016	0.009	-0.002, 0.035
	1972	0.010	0.021	-0.031, 0.052	0.025	0.013	-0.001, 0.051
	1973	0.021	0.026	-0.030, 0.072	0.044	0.016	0.013, 0.075
	1974	0.035	0.031	-0.025, 0.095	0.065	0.019	0.028, 0.101
	1975	0.053	0.035	-0.015, 0.122	0.081	0.021	0.040, 0.122
1976	0.055	0.040	-0.022, 0.133	0.067	0.024	0.020, 0.113	
1977	0.059	0.045	-0.030, 0.148	0.071	0.027	0.018, 0.123	
1978	0.060	0.051	-0.040, 0.160	0.069	0.029	0.012, 0.127	
1979	0.064	0.060	-0.054, 0.181	0.053	0.034	-0.013, 0.119	
Sibling Group Size	3 (ref)				0.000		
	4				-0.004	0.003	-0.010, 0.001
	5				-0.004	0.005	-0.014, 0.006
	6				-0.004	0.009	-0.021, 0.014
	7				-0.033	0.010	-0.053, -0.013
N		108,024			108,024		

TABLE S12. Results: Relationship Between Preceding Birth Interval and Being Underweight or Severely Underweight for Swedish Men Born 1962-1979. Estimates for Age at Conscription Test and Year of Conscription Test Not Shown.

		Within-family			Between-family		
		Beta	SE	95% CI	Beta	SE	95% CI
Preceding Interval Length	9-12	-0.015	0.014	-0.042, 0.012	-0.007	0.008	-0.021, 0.008
	13-18	-0.006	0.006	-0.018, 0.007	0.005	0.004	-0.002, 0.012
	19-24	-0.003	0.006	-0.014, 0.008	-0.004	0.003	-0.009, 0.002
	25-30 (ref)	0.000			0.000		
	31-36	-0.001	0.006	-0.013, 0.010	0.001	0.003	-0.005, 0.007
	37-42	0.003	0.006	-0.010, 0.015	0.003	0.003	-0.004, 0.009
	43-48	-0.001	0.007	-0.014, 0.012	-0.005	0.003	-0.011, 0.002
	49-54	0.000	0.007	-0.015, 0.014	0.004	0.004	-0.004, 0.011
	55-60	0.010	0.008	-0.006, 0.025	-0.002	0.004	-0.010, 0.006
	61-66	-0.005	0.009	-0.023, 0.013	-0.011	0.004	-0.020, -0.003
	67-72	0.004	0.010	-0.017, 0.024	0.003	0.005	-0.007, 0.013
	73-78	0.015	0.011	-0.008, 0.037	0.009	0.006	-0.003, 0.020
	79-84	0.017	0.013	-0.008, 0.042	-0.003	0.006	-0.015, 0.009
	85-90	0.003	0.014	-0.026, 0.031	-0.009	0.007	-0.022, 0.004
Birth Order	91-96	0.004	0.017	-0.028, 0.037	-0.025	0.007	-0.038, -0.012
	97+	0.003	0.013	-0.021, 0.028	-0.011	0.005	-0.020, -0.002
	2 (ref)	0.000			0.000		
	3	0.010	0.006	-0.002, 0.021	-0.002	0.002	-0.006, 0.002
	4	0.006	0.011	-0.016, 0.028	-0.008	0.004	-0.015, -0.001
	5	-0.004	0.018	-0.038, 0.031	-0.025	0.007	-0.038, -0.012
	6	0.003	0.024	-0.044, 0.051	-0.032	0.011	-0.054, -0.011
Maternal Age	7	0.000	0.032	-0.063, 0.062	-0.054	0.014	-0.081, -0.026
	15-19	0.000	0.019	-0.038, 0.038	-0.013	0.009	-0.030, 0.005
	20-24	-0.005	0.006	-0.017, 0.007	-0.005	0.002	-0.009, 0.000
	25-29 (ref)	0.000			0.000		
	30-34	0.006	0.006	-0.005, 0.018	0.003	0.002	-0.001, 0.008
	35-39	0.021	0.012	-0.002, 0.044	0.013	0.003	0.006, 0.019
Birth Year	40-44	0.070	0.020	0.031, 0.110	0.026	0.007	0.012, 0.040
	45+	0.083	0.057	-0.029, 0.195	0.006	0.024	-0.042, 0.054
	1962	0.000	0.223	-0.437, 0.438	-0.080	0.028	-0.135, -0.026
	1963	-0.052	0.077	-0.203, 0.099	0.009	0.039	-0.067, 0.084
	1964	-0.057	0.049	-0.153, 0.040	-0.016	0.024	-0.063, 0.030
	1965	-0.021	0.043	-0.105, 0.062	-0.012	0.021	-0.053, 0.029
	1966	-0.026	0.035	-0.095, 0.043	-0.010	0.018	-0.045, 0.025
	1967	-0.034	0.029	-0.092, 0.024	-0.016	0.015	-0.045, 0.014
	1968	-0.038	0.022	-0.082, 0.006	-0.008	0.012	-0.031, 0.015
	1969	-0.008	0.016	-0.039, 0.023	0.001	0.009	-0.016, 0.019
	1970 (ref)	0.000			0.000		
	1971	0.009	0.014	-0.019, 0.037	0.009	0.008	-0.007, 0.024
	1972	0.003	0.020	-0.036, 0.043	0.020	0.011	0.000, 0.041
	1973	0.010	0.025	-0.039, 0.058	0.022	0.013	-0.003, 0.047
	1974	0.011	0.029	-0.047, 0.068	0.012	0.015	-0.017, 0.042
1975	0.019	0.034	-0.047, 0.085	0.009	0.017	-0.024, 0.042	
Sibling Group Size	1976	0.018	0.039	-0.058, 0.093	0.002	0.019	-0.034, 0.039
	1977	0.001	0.044	-0.086, 0.088	0.001	0.021	-0.040, 0.042
	1978	0.013	0.050	-0.086, 0.112	0.016	0.023	-0.028, 0.060
	1979	0.031	0.059	-0.085, 0.147	0.031	0.025	-0.019, 0.080
	3 (ref)				0.000		
	4				0.001	0.002	-0.003, 0.006
	5				0.020	0.004	0.012, 0.029
6				0.022	0.007	0.008, 0.036	
7				0.048	0.010	0.027, 0.068	
N		102,000			102,000		

TABLE S13. Results: Relationship Between Subsequent Birth Interval and Being Underweight or Severely Underweight for Swedish Men Born 1962-1979. Estimates for Age at Conscription Test and Year of Conscription Test Not Shown.

		Within-family			Between-family		
		Beta	SE	95% CI	Beta	SE	95% CI
Subsequent Interval Length	9-12	0.010	0.014	-0.017, 0.036	-0.006	0.008	-0.022, 0.011
	13-18	-0.003	0.006	-0.015, 0.009	-0.001	0.004	-0.008, 0.006
	19-24	0.004	0.005	-0.006, 0.014	0.002	0.003	-0.005, 0.008
	25-30 (ref)	0.000			0.000		
	31-36	-0.005	0.005	-0.015, 0.006	0.000	0.003	-0.006, 0.006
	37-42	-0.001	0.006	-0.013, 0.010	0.004	0.003	-0.003, 0.010
	43-48	-0.006	0.006	-0.018, 0.007	0.004	0.004	-0.003, 0.011
	49-54	-0.011	0.007	-0.024, 0.002	0.002	0.004	-0.005, 0.009
	55-60	-0.006	0.007	-0.020, 0.009	0.002	0.004	-0.006, 0.010
	61-66	-0.011	0.008	-0.026, 0.005	0.001	0.004	-0.008, 0.009
	67-72	-0.005	0.009	-0.023, 0.012	-0.001	0.005	-0.010, 0.008
	73-78	-0.015	0.009	-0.034, 0.003	-0.006	0.005	-0.016, 0.003
	79-84	-0.008	0.010	-0.028, 0.012	-0.001	0.005	-0.011, 0.010
	85-90	0.003	0.011	-0.019, 0.025	0.007	0.006	-0.005, 0.019
	91-96	-0.010	0.012	-0.032, 0.013	-0.002	0.006	-0.014, 0.010
97+	-0.010	0.007	-0.024, 0.003	-0.004	0.004	-0.011, 0.003	
Birth Order	1	-0.013	0.006	-0.025, -0.002	0.007	0.002	0.003, 0.011
	2 (ref)	0.000			0.000		
	3	0.023	0.007	0.009, 0.036	0.004	0.003	-0.003, 0.011
	4	0.031	0.014	0.004, 0.058	0.007	0.007	-0.006, 0.021
	5	0.031	0.022	-0.012, 0.075	-0.008	0.011	-0.031, 0.014
	6	0.056	0.032	-0.007, 0.120	-0.017	0.018	-0.052, 0.019
Maternal Age	15-19	0.005	0.010	-0.014, 0.024	-0.008	0.003	-0.015, -0.002
	20-24	0.003	0.005	-0.007, 0.012	-0.002	0.002	-0.005, 0.002
	25-29 (ref)	0.000			0.000		
	30-34	-0.004	0.006	-0.016, 0.009	0.005	0.003	-0.001, 0.010
	35-39	-0.016	0.017	-0.049, 0.016	0.004	0.007	-0.009, 0.017
	40-44	0.082	0.055	-0.026, 0.190	0.036	0.028	-0.019, 0.090
Birth Year	45+				-0.072	0.003	-0.078, -0.065
	1962	0.066	0.239	-0.402, 0.535	-0.052	0.026	-0.104, -0.001
	1963	-0.046	0.078	-0.198, 0.106	0.023	0.034	-0.044, 0.090
	1964	0.013	0.046	-0.077, 0.103	0.011	0.023	-0.034, 0.056
	1965	0.012	0.039	-0.064, 0.089	-0.002	0.020	-0.041, 0.037
	1966	0.026	0.032	-0.036, 0.088	0.007	0.018	-0.027, 0.042
	1967	0.019	0.025	-0.031, 0.068	0.000	0.015	-0.029, 0.029
	1968	0.017	0.020	-0.021, 0.055	0.003	0.012	-0.020, 0.026
	1969	0.024	0.014	-0.003, 0.051	0.013	0.009	-0.005, 0.031
	1970 (ref)	0.000			0.000		
	1971	0.005	0.013	-0.021, 0.030	0.016	0.007	0.001, 0.030
	1972	-0.011	0.018	-0.047, 0.024	0.017	0.010	-0.003, 0.038
	1973	-0.019	0.022	-0.062, 0.025	0.029	0.012	0.005, 0.053
	1974	-0.025	0.026	-0.077, 0.026	0.023	0.015	-0.006, 0.051
	1975	-0.028	0.030	-0.087, 0.031	0.011	0.017	-0.022, 0.043
1976	-0.030	0.034	-0.097, 0.036	0.015	0.018	-0.021, 0.051	
1977	-0.026	0.039	-0.102, 0.050	0.009	0.020	-0.030, 0.049	
1978	-0.036	0.044	-0.122, 0.049	0.015	0.022	-0.028, 0.058	
1979	-0.057	0.051	-0.157, 0.044	0.038	0.025	-0.010, 0.086	
Sibling Group Size	3 (ref)				0.000		
	4				-0.001	0.002	-0.005, 0.004
	5				0.012	0.004	0.004, 0.021
	6				0.007	0.007	-0.006, 0.021
	7				0.029	0.010	0.009, 0.049
N		108,024			108,024		

TABLE S14. Results: Relationship Between Preceding Birth Interval and Mortality for Swedish Men and Women Born 1938-1960.

		Within-family			Between-family		
		RR	SE	95% CI	RR	SE	95% CI
Preceding Interval Length	9-12	1.01	0.06	0.90-1.14	0.97	0.04	0.89-1.05
	13-18	0.96	0.03	0.91-1.02	0.94	0.02	0.91-0.98
	19-24	0.97	0.03	0.92-1.02	0.95	0.02	0.92-0.98
	25-30 (ref)	1.00			1.00		
	31-36	0.95	0.03	0.90-1.01	0.98	0.02	0.95-1.02
	37-42	0.99	0.03	0.93-1.05	1.00	0.02	0.96-1.04
	43-48	1.01	0.03	0.95-1.08	0.98	0.02	0.94-1.02
	49-54	1.04	0.04	0.96-1.11	1.01	0.02	0.97-1.06
	55-60	0.93	0.04	0.86-1.01	0.94	0.03	0.89-0.99
	61-66	0.99	0.04	0.91-1.08	1.00	0.03	0.94-1.05
	67-72	1.01	0.05	0.92-1.11	0.99	0.03	0.94-1.05
	73-78	0.94	0.05	0.84-1.04	0.97	0.03	0.91-1.04
	79-84	0.91	0.06	0.81-1.02	0.98	0.04	0.91-1.05
	85-90	0.89	0.07	0.78-1.02	0.93	0.04	0.85-1.01
91-96	0.96	0.08	0.82-1.11	0.90	0.05	0.82-0.98	
97+	0.94	0.05	0.85-1.04	0.85	0.03	0.80-0.90	
Gender	Men (ref)	1.00	0.00	1.00-1.00	1.00	0.00	1.00-1.00
	Women	0.65	0.01	0.63-0.67	0.68	0.01	0.67-0.70
Birth Order	2 (ref)	1.00	0.00	1.00-1.00	1.00	0.00	1.00-1.00
	3	1.03	0.02	0.99-1.07	0.91	0.01	0.89-0.93
	4	0.98	0.03	0.92-1.05	0.83	0.02	0.80-0.86
	5	1.00	0.05	0.91-1.10	0.82	0.03	0.78-0.86
	6	1.01	0.06	0.89-1.14	0.80	0.04	0.74-0.87
	7	1.04	0.08	0.89-1.21	0.73	0.04	0.67-0.80
	Maternal Age	15-19	1.08	0.11	0.87-1.33	1.16	0.06
20-24	1.01	0.03	0.95-1.07	1.04	0.01	1.01-1.07	
25-29 (ref)	1.00	0.00	1.00-1.00	1.00	0.00	1.00-1.00	
30-34	0.97	0.03	0.92-1.03	0.96	0.01	0.94-0.99	
35-39	0.97	0.04	0.89-1.06	0.95	0.01	0.93-0.98	
40-44	1.07	0.07	0.94-1.21	1.01	0.02	0.97-1.05	
45+	1.03	0.13	0.81-1.33	0.98	0.07	0.85-1.12	
Cohort	1938-1940	1.03	0.04	0.94-1.12	0.88	0.02	0.85-0.91
	1941-1945	1.03	0.03	0.98-1.09	0.89	0.01	0.87-0.92
	1946-1950 (ref)	1.00	0.00	1.00-1.00	1.00	0.00	1.00-1.00
	1951-1955	0.98	0.03	0.93-1.04	1.26	0.02	1.22-1.30
	1956-1960	0.92	0.05	0.83-1.01	1.75	0.02	1.68-1.82
Sibling Group Size	3 (ref)				1.00	0.00	1.00-1.00
	4				0.83	0.01	0.81-0.84
	5				0.72	0.01	0.70-0.74
	6				0.64	0.02	0.62-0.66
	7				0.55	0.02	0.53-0.58
N		159,554			159,554		

TABLE S15. Results: Relationship Between Subsequent Birth Interval and Mortality for Swedish Men and Women Born 1938-1960.

		Within-family			Between-family		
		RR	SE	95% CI	RR	SE	95% CI
Subsequent Interval Length	9-12	1.02	0.06	0.91-1.14	0.92	0.04	0.85-1.00
	13-18	1.03	0.03	0.98-1.08	0.95	0.02	0.92-0.99
	19-24	1.03	0.03	0.98-1.08	0.98	0.02	0.95-1.02
	25-30 (ref)	1.00	0.00	1.00-1.00	1.00	0.00	1.00-1.00
	31-36	1.00	0.03	0.95-1.06	1.02	0.02	0.99-1.06
	37-42	1.02	0.03	0.96-1.09	1.03	0.02	0.99-1.07
	43-48	1.03	0.03	0.97-1.10	1.07	0.02	1.03-1.12
	49-54	0.98	0.04	0.91-1.05	1.05	0.02	1.00-1.09
	55-60	1.03	0.04	0.95-1.10	1.12	0.02	1.07-1.17
	61-66	1.00	0.04	0.93-1.09	1.13	0.03	1.08-1.19
	67-72	0.91	0.05	0.84-1.00	1.11	0.03	1.05-1.17
	73-78	0.96	0.05	0.88-1.06	1.13	0.03	1.06-1.19
	79-84	1.08	0.05	0.98-1.20	1.17	0.03	1.10-1.24
	85-90	1.09	0.06	0.98-1.23	1.18	0.03	1.11-1.27
Gender	91-96	1.07	0.06	0.95-1.21	1.17	0.04	1.09-1.25
	97+	1.05	0.03	0.98-1.12	1.22	0.02	1.17-1.27
Birth Order	Men (ref)	1.00	0.00	1.00-1.00	1.00	0.00	1.00-1.00
	Women	0.64	0.01	0.62-0.66	0.69	0.01	0.68-0.70
Maternal Age	1	1.01	0.02	0.97-1.05	1.15	0.01	1.12-1.18
	2 (ref)	1.00	0.00	1.00-1.00	1.00	0.00	1.00-1.00
	3	1.03	0.02	0.99-1.07	0.92	0.02	0.89-0.95
	4	1.00	0.04	0.93-1.07	0.81	0.02	0.78-0.85
	5	1.05	0.05	0.94-1.16	0.77	0.03	0.72-0.83
	6	1.07	0.07	0.93-1.23	0.72	0.05	0.65-0.80
Cohort	15-19	0.97	0.05	0.88-1.07	1.11	0.02	1.06-1.15
	20-24	0.99	0.02	0.94-1.04	1.05	0.01	1.03-1.07
	25-29 (ref)	1.00	0.00	1.00-1.00	1.00	0.00	1.00-1.00
	30-34	0.97	0.03	0.92-1.02	0.98	0.01	0.96-1.01
	35-39	0.97	0.05	0.89-1.07	1.01	0.02	0.97-1.04
	40-44	1.23	0.10	1.02-1.49	1.19	0.04	1.11-1.29
Sibling Group Size	45+	0.49	1.13	0.05-4.48	0.53	0.73	0.13-2.20
	1938-1940	1.12	0.04	1.03-1.21	0.71	0.01	0.69-0.73
	1941-1945	1.08	0.03	1.03-1.14	0.80	0.01	0.78-0.82
	1946-1950 (ref)	1.00	0.00	1.00-1.00	1.00	0.00	1.00-1.00
	1951-1955	0.95	0.03	0.90-1.01	1.46	0.02	1.41-1.50
N	1956-1960	0.91	0.05	0.82-1.01	2.23	0.02	2.14-2.32
	3 (ref)				1.00	0.00	1.00-1.00
	4				0.82	0.01	0.80-0.84
	5				0.73	0.01	0.71-0.75
N	6				0.66	0.02	0.64-0.68
	7				0.60	0.02	0.57-0.62
	N		150,907			150,907	

TABLE S16. Preceding Birth Interval: Robustness Checks Using Alternative Specifications of Birth Interval Variable.

		Fitness				Height			
		Between-family		Within-family		Between-family		Within-family	
		Beta	95% CI	Beta	95% CI	Beta	95% CI	Beta	95% CI
Binary	0-24 months (ref)	0.000		0.00		0.000		0.000	
	>24 months	-0.051	-0.066, -0.036	0.011	-0.015, 0.036	-0.035	-0.050, -0.021	0.001	-0.019, 0.022
Binary	0-18 months (ref)	0.000		0.000		0.000		0.000	
	>18 months	-0.032	-0.053, -0.012	0.005	-0.028, 0.039	-0.019	-0.039, 0.001	0.007	-0.020, 0.035
Continuous	Interval (months)	-0.002	-0.002, -0.002	0.000	-0.001, 0.000	-0.001	-0.001, -0.001	0.000	0.000, 0.001
Quadratic	Interval (months)	-0.003	-0.005, -0.002	-0.003	-0.007, 0.001	-0.002	-0.003, -0.001	0.000	-0.004, 0.003
	Interval squared	0.000	0.000, 0.000	0.000	0.000, 0.000	0.000	0.000, 0.000	0.000	0.000, 0.000
		Underweight				Overweight			
		Between-family		Within-family		Between-family		Within-family	
		Beta	95% CI	Beta	95% CI	Beta	95% CI	Beta	95% CI
Binary	0-24 months (ref)	0.000		0.00		0.000		0.000	
	>24 months	0.000	-0.004, 0.004	0.005	-0.003, 0.012	0.016	0.011, 0.021	0.006	-0.003, 0.015
Binary	0-18 months (ref)	0.000		0.000		0.000		0.000	
	>18 months	-0.004	-0.010, 0.001	0.006	-0.004, 0.016	0.013	0.006, 0.019	0.009	-0.003, 0.021
Continuous	Interval (months)	0.000	0.000, 0.000	0.000	0.000, 0.000	0.001	0.001, 0.001	0.000	0.000, 0.001
Quadratic	Interval (months)	0.000	0.000, 0.000	0.000	-0.001, 0.002	0.000	0.000, 0.001	0.000	-0.002, 0.001
	Interval squared	0.000	0.000, 0.000	0.000	0.000, 0.000	0.000	0.000, 0.000	0.000	0.000, 0.000
		Mortality							
		Between-family		Within-family					
		RR	95% CI	RR	95% CI				
Binary	0-24 months (ref)	1.00		1.00					
	>24 months	1.04	1.02-1.06	1.02	0.98-1.05				
Binary	0-18 months (ref)	1.00		1.00					
	>18 months	1.03	1.00-1.06	1.01	0.97-1.05				
Continuous	Interval (months)	1.00	1.00-1.00	1.00	1.00-1.00				
Quadratic	Interval (months)	1.00	1.00-1.00	1.00	1.00-1.00				
	Interval squared	1.00	1.00-1.00	1.00	1.00-1.00				

TABLE S17. Subsequent Birth Interval: Robustness Checks Using Alternative Specifications of Birth Interval Variable.

		Fitness				Height			
		Between-family		Within-family		Between-family		Within-family	
		Beta	95% CI	Beta	95% CI	Beta	95% CI	Beta	95% CI
Binary	0-24 months (ref)	0.000		0.00		0.000		0.000	
	>24 months	-0.003	-0.018, 0.012	-0.011	-0.037, 0.016	-0.011	-0.026, 0.004	0.011	-0.011, 0.032
Binary	0-18 months (ref)	0.000		0.000		0.000		0.000	
	>18 months	0.019	-0.003, 0.041	-0.009	-0.044, 0.026	0.028	0.007, 0.050	0.024	-0.004, 0.052
Continuous	Interval (months)	0.000	0.000, 0.000	0.000	0.000, 0.000	0.000	0.000, 0.000	0.000	0.000, 0.000
Quadratic	Interval (months)	0.000	-0.001, 0.000	0.000	-0.001, 0.001	0.000	-0.001, 0.000	0.000	-0.001, 0.001
	Interval squared	0.000	0.000, 0.000	0.000	0.000, 0.000	0.000	0.000, 0.000	0.000	0.000, 0.000
		Underweight				Overweight			
		Between-family		Within-family		Between-family		Within-family	
		Beta	95% CI	Beta	95% CI	Beta	95% CI	Beta	95% CI
Binary	0-24 months (ref)	0.000		0.00		0.000		0.000	
	>24 months	0.001	-0.003, 0.005	-0.005	-0.013, 0.002	-0.001	-0.006, 0.004	0.005	-0.004, 0.014
Binary	0-18 months (ref)	0.000		0.000		0.000		0.000	
	>18 months	0.003	-0.003, 0.008	0.001	-0.009, 0.011	-0.007	-0.014, 0.000	0.000	-0.012, 0.012
Continuous	Interval (months)	0.000	0.000, 0.000	0.000	0.000, 0.000	0.000	0.000, 0.000	0.000	0.000, 0.000
Quadratic	Interval (months)	0.000	0.000, 0.000	0.000	-0.001, 0.000	0.000	0.000, 0.000	0.000	0.000, 0.001
	Interval squared	0.000	0.000, 0.000	0.000	0.000, 0.000	0.000	0.000, 0.000	0.000	0.000, 0.000
		Mortality							
		Between-family		Within-family					
		RR	95% CI	RR	95% CI				
Binary	0-24 months (ref)	1.00		1.00					
	>24 months	1.10	1.08-1.12	0.98	0.95-1.01				
Binary	0-18 months (ref)	1.00		1.00					
	>18 months	1.10	1.07-1.12	0.99	0.95-1.03				
Continuous	Interval (months)	1.00	1.00-1.00	1.00	1.00-1.00				
Quadratic	Interval (months)	1.00	1.00-1.00	1.00	1.00-1.00				
	Interval squared	1.00	1.00-1.00	1.00	1.00-1.00				

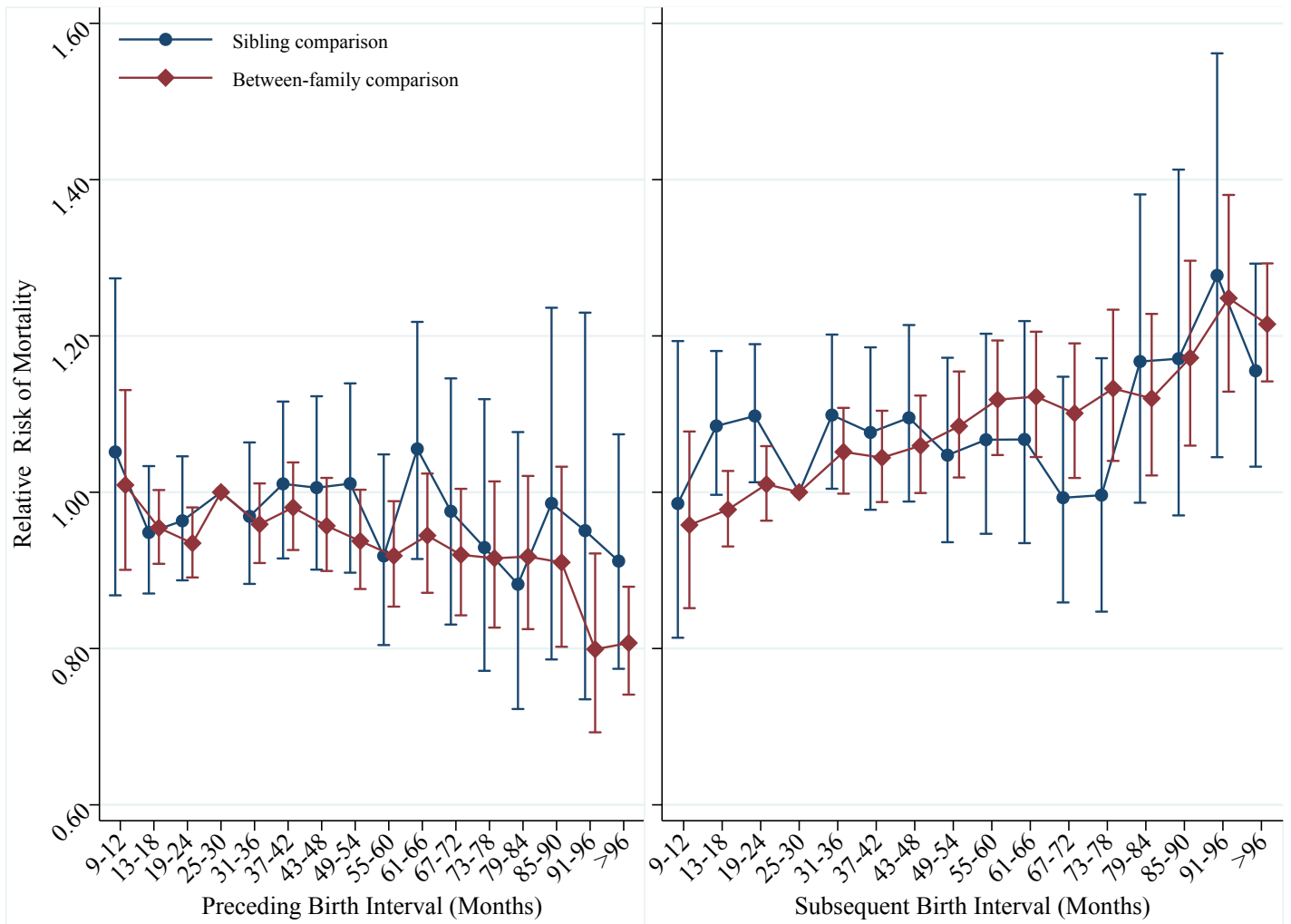


FIGURE S1. Hazard of mortality by preceding and subsequent birth intervals, Swedish men born 1938 to 1960. The analysis population for examining preceding birth intervals consists of individuals in sibling groups with at least three children, excluding the first-born. The analysis population for examining subsequent birth intervals consists of individuals in sibling groups with at least three children, excluding the last-born. Error bars are 95% confidence intervals.

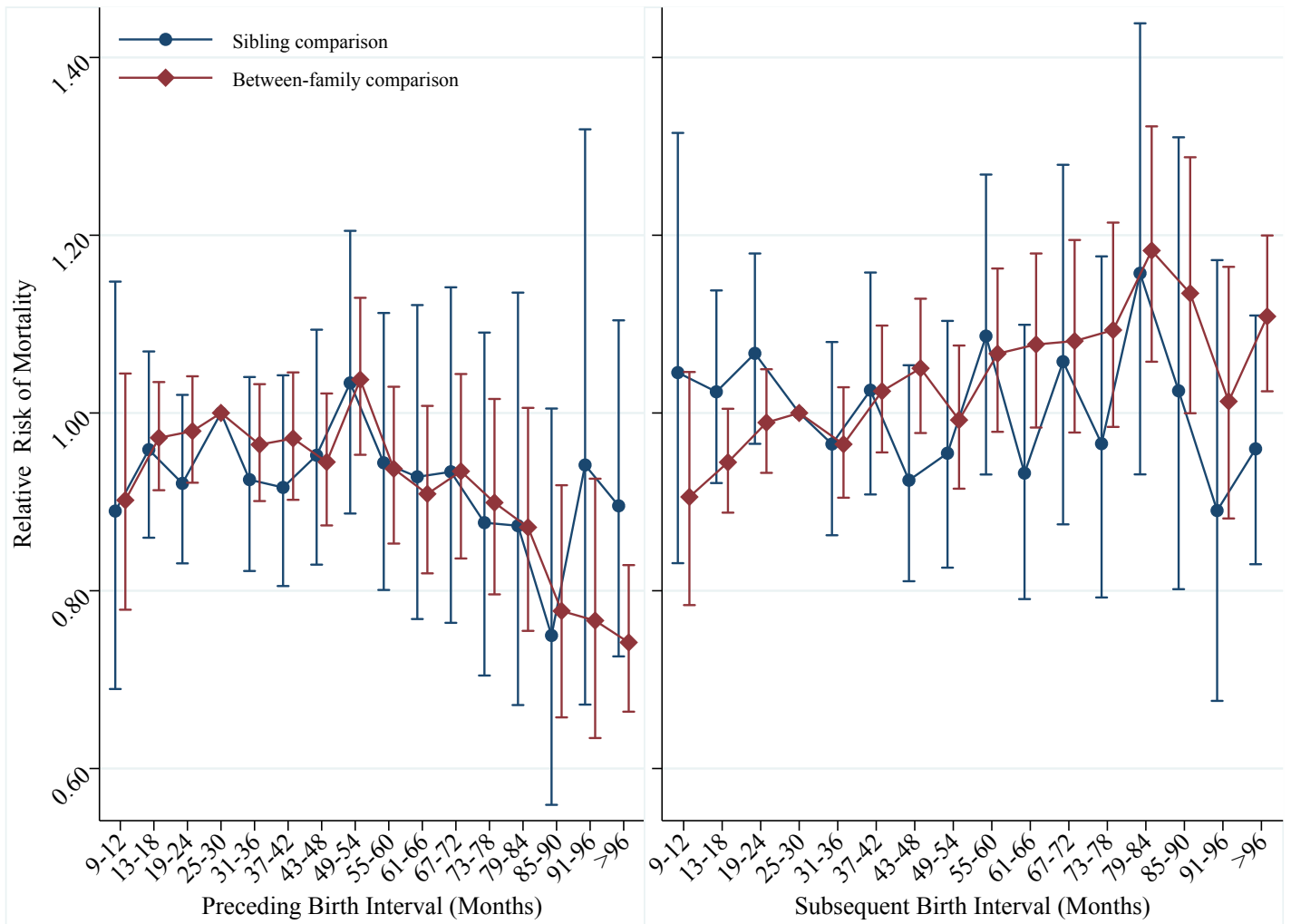


FIGURE S2. Hazard of mortality by preceding and subsequent birth intervals, Swedish women born 1938 to 1960. The analysis population for examining preceding birth intervals consists of individuals in sibling groups with at least three children, excluding the first-born. The analysis population for examining subsequent birth intervals consists of individuals in sibling groups with at least three children, excluding the last-born. Error bars are 95% confidence intervals.

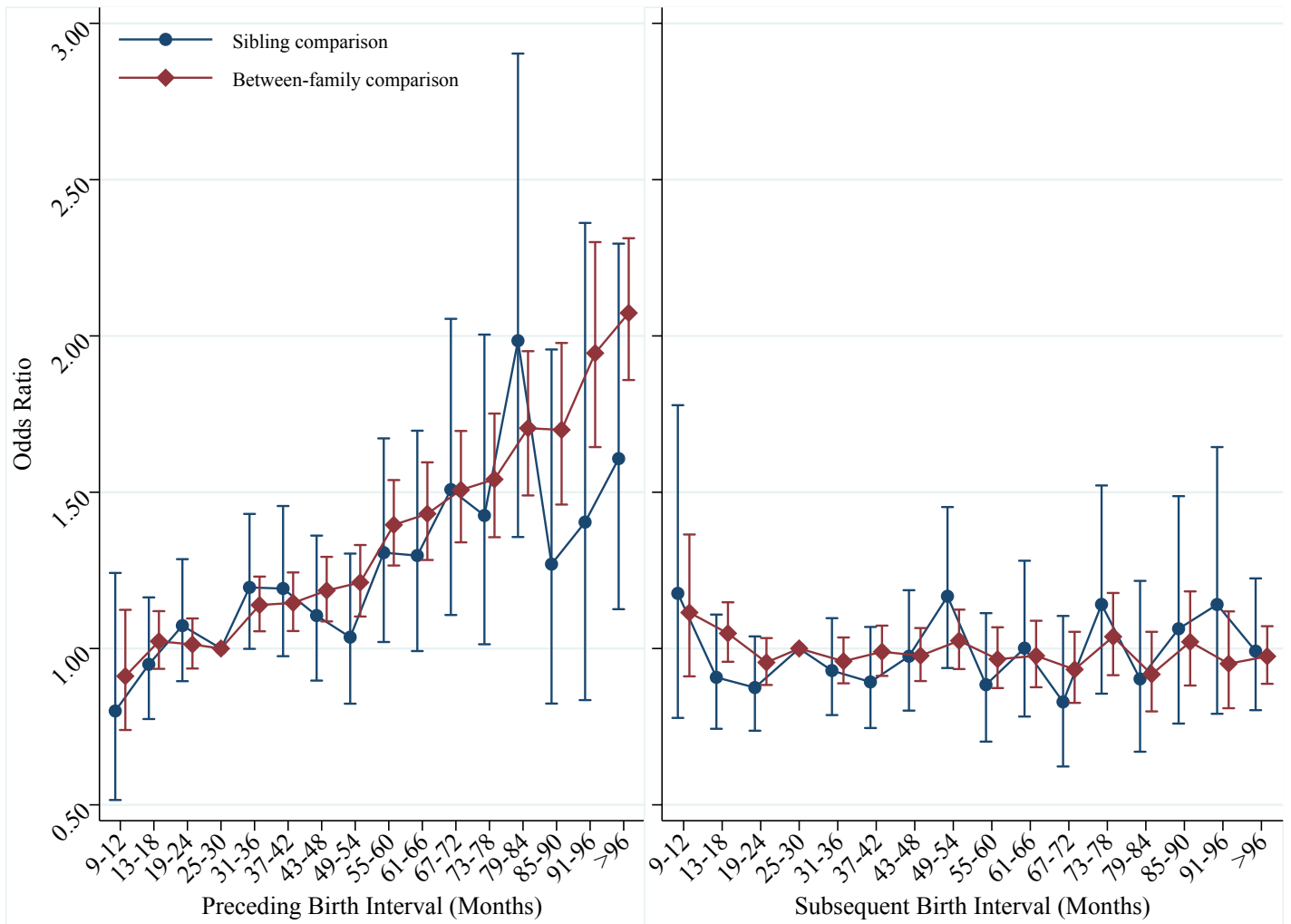


FIGURE S3. Odds ratios for being overweight or obese by preceding and subsequent birth intervals, Swedish men born 1962 to 1979. The analysis population for examining preceding birth intervals consists of individuals in sibling groups with at least three children, excluding the first-born. The analysis population for examining subsequent birth intervals consists of individuals in sibling groups with at least three male children, excluding the last-born. Error bars are 95% confidence intervals.

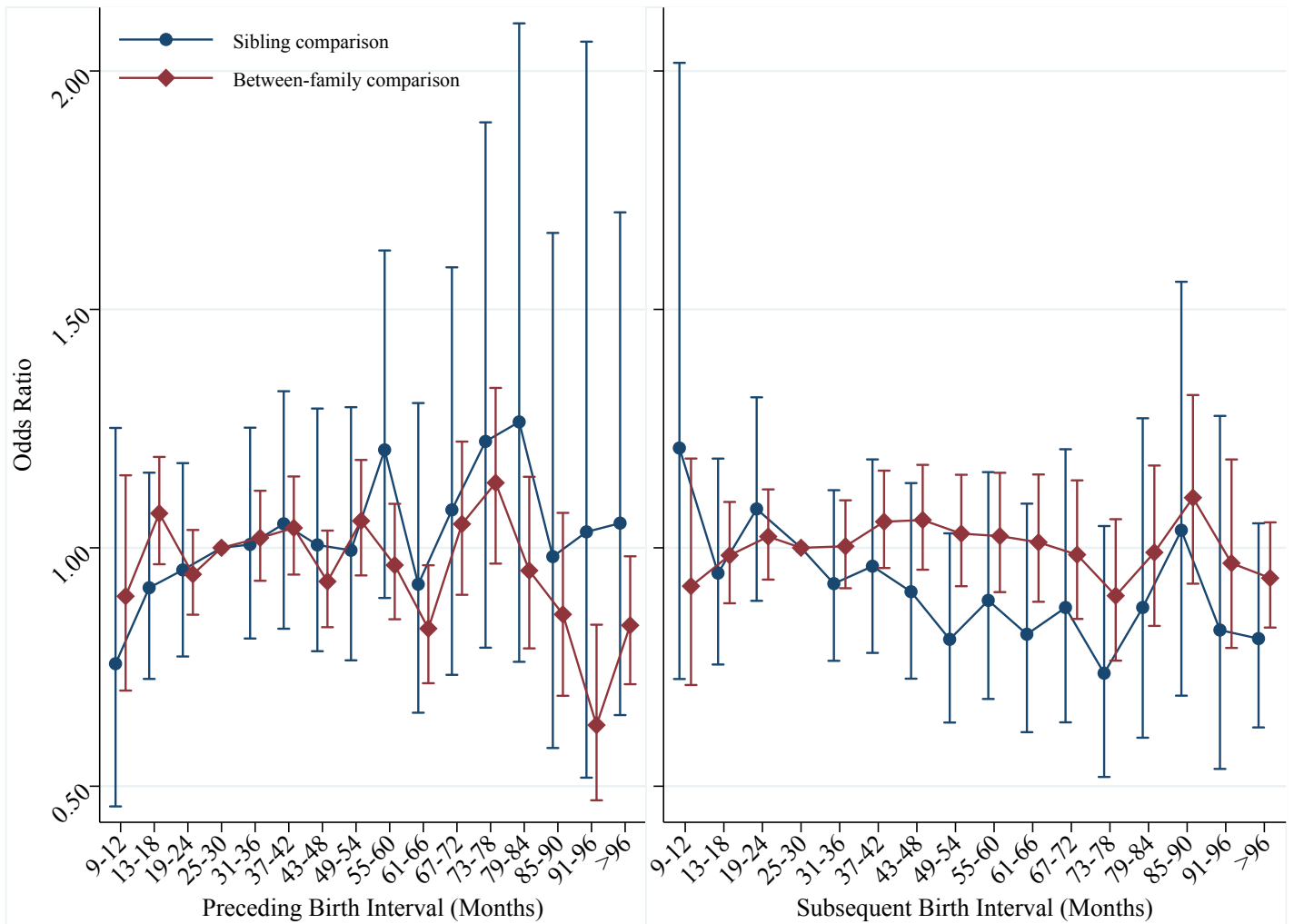


FIGURE S4. Odds ratios for being underweight by preceding and subsequent birth intervals, Swedish men born 1962 to 1979. The analysis population for examining preceding birth intervals consists of individuals in sibling groups with at least three children, excluding the first-born. The analysis population for examining subsequent birth intervals consists of individuals in sibling groups with at least three male children, excluding the last-born. Error bars are 95% confidence intervals.

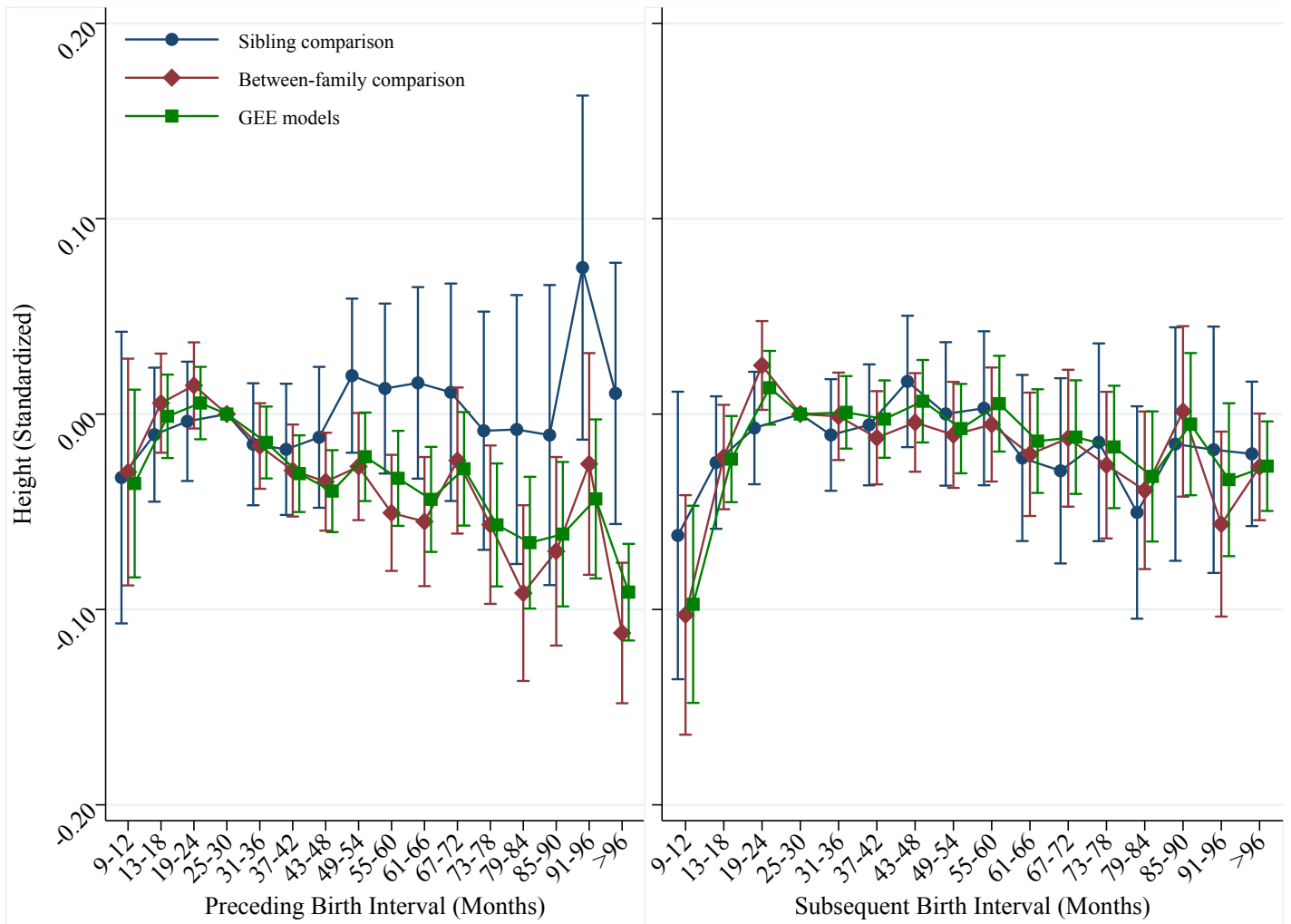


FIGURE S5. Height at ages 17 to 20 by preceding and subsequent birth intervals, Swedish men born 1962 to 1979. The analysis population for examining preceding birth intervals consists of individuals in sibling groups with at least three children, excluding the first-born. The analysis population for examining subsequent birth intervals consists of individuals in sibling groups with at least three male children, excluding the last-born. Error bars are 95% confidence intervals.

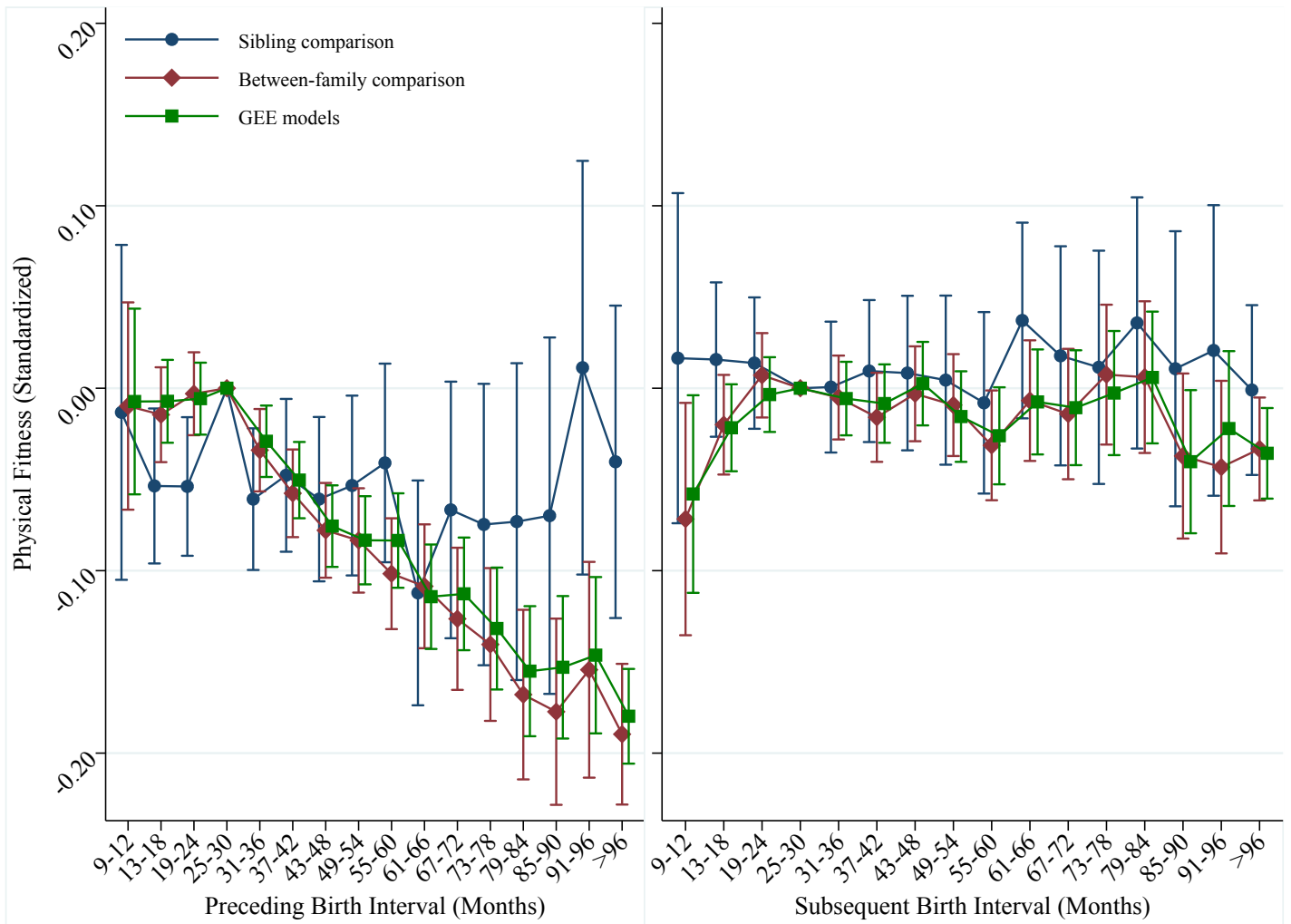


FIGURE S6. Physical fitness at ages 17 to 20 by preceding and subsequent birth intervals, Swedish men born 1962 to 1979. The analysis population for examining preceding birth intervals consists of individuals in sibling groups with at least three children, excluding the first-born. The analysis population for examining subsequent birth intervals consists of individuals in sibling groups with at least three male children, excluding the last-born. Error bars are 95% confidence intervals.

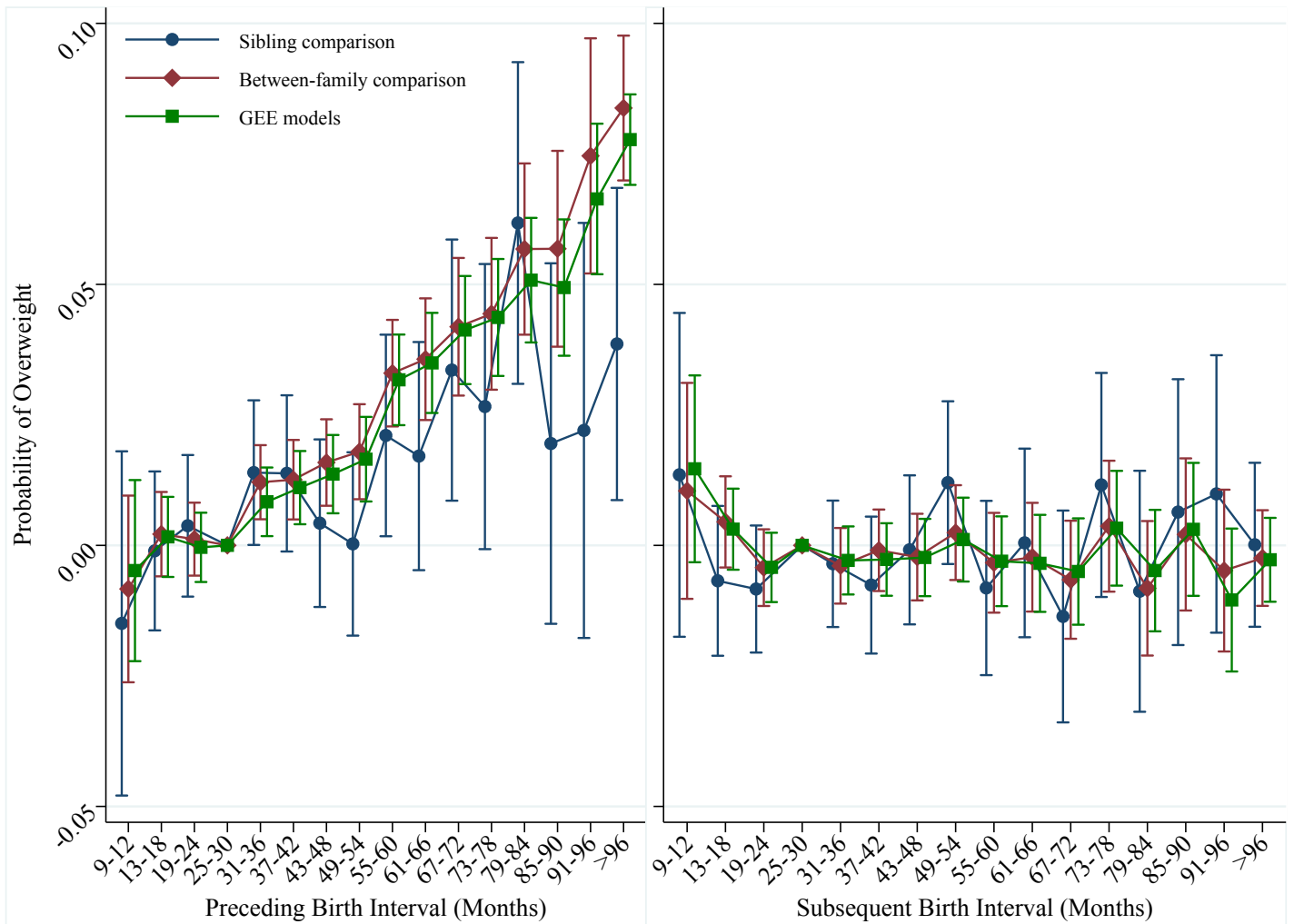


FIGURE S7. Predicted probability of being overweight or obese by preceding and subsequent birth intervals, Swedish men born 1962 to 1979. The analysis population for examining preceding birth intervals consists of individuals in sibling groups with at least three children, excluding the first-born. The analysis population for examining subsequent birth intervals consists of individuals in sibling groups with at least three male children, excluding the last-born. Error bars are 95% confidence intervals.

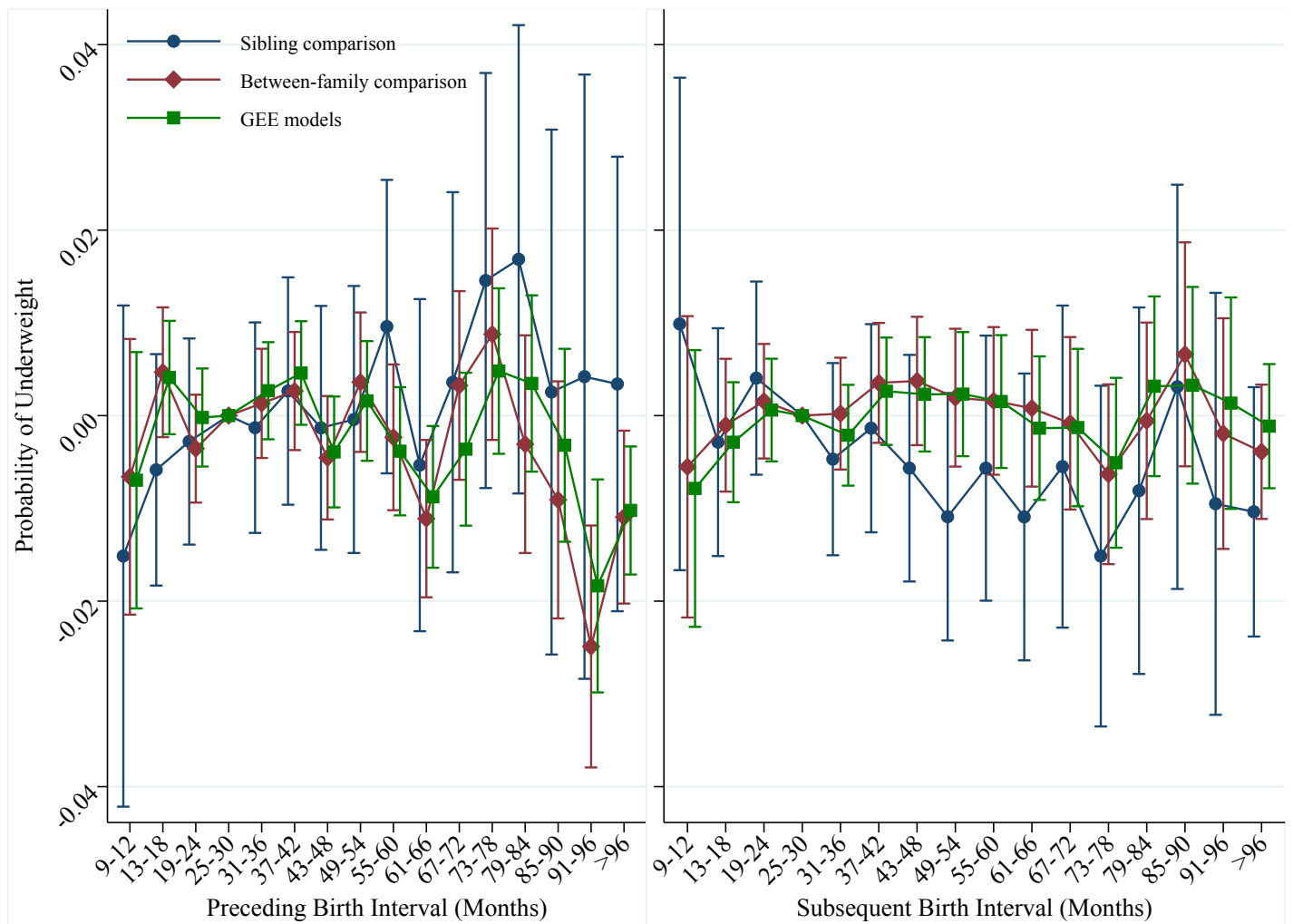


FIGURE S8. Predicted probability of being underweight by preceding and subsequent birth intervals, Swedish men born 1962 to 1979. The analysis population for examining preceding birth intervals consists of individuals in sibling groups with at least three children, excluding the first-born. The analysis population for examining subsequent birth intervals consists of individuals in sibling groups with at least three male children, excluding the last-born. Error bars are 95% confidence intervals.

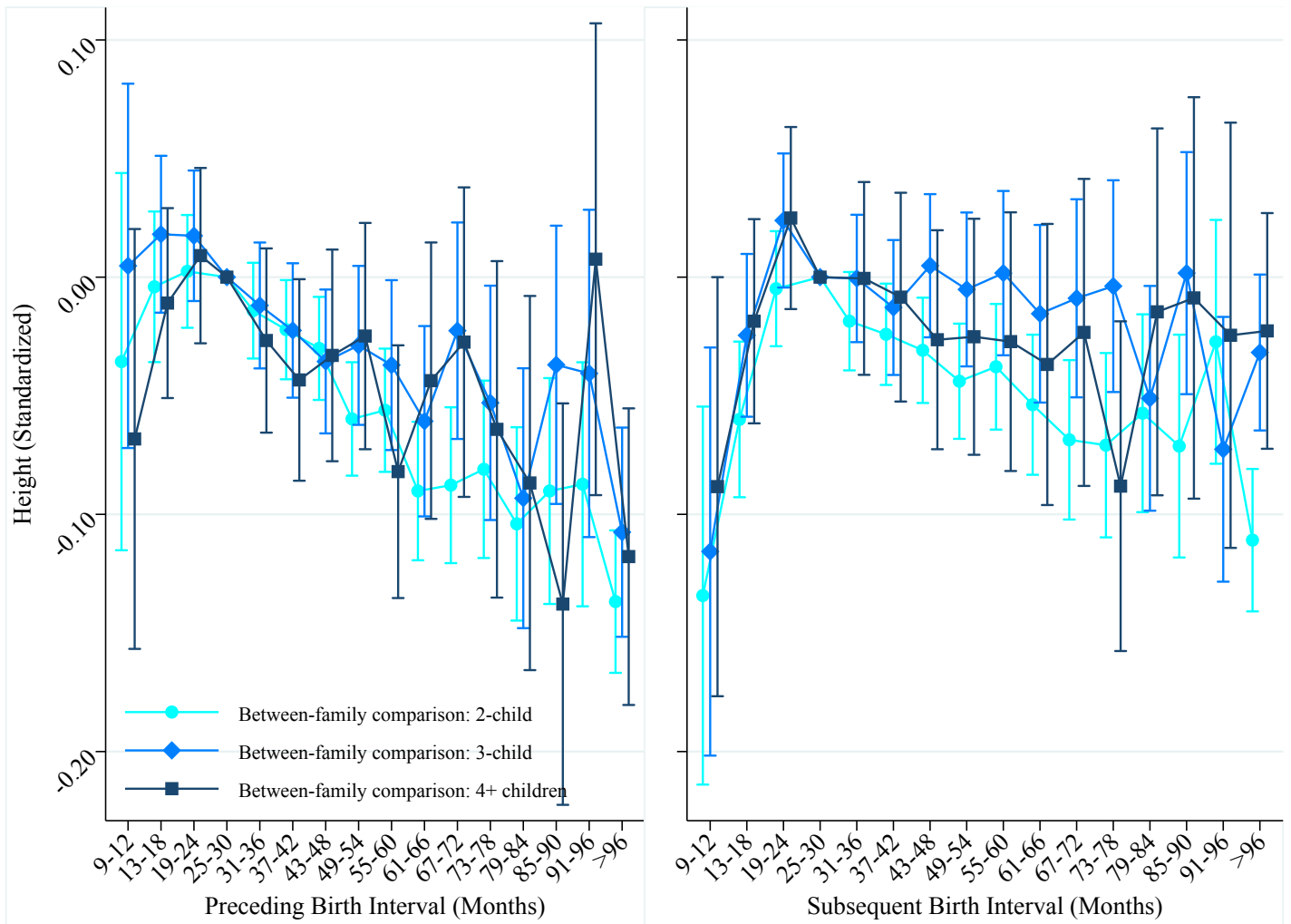


FIGURE S9. Height at ages 17 to 20 by preceding and subsequent birth intervals and by family size, Swedish men born 1962 to 1979. The analysis population for examining preceding birth intervals excludes first-borns. The analysis population for examining subsequent birth intervals excludes last-borns. Error bars are 95% confidence intervals.

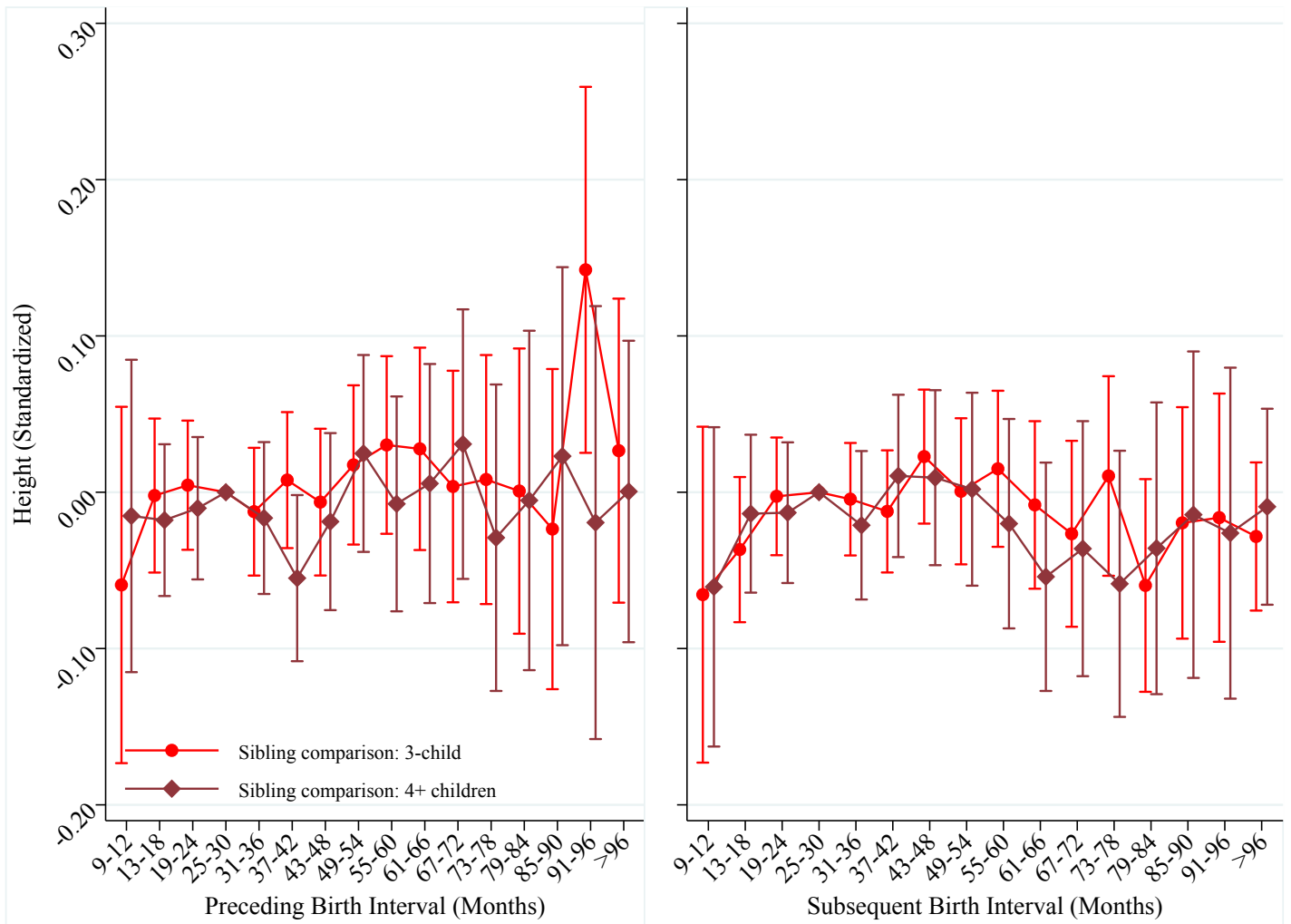


FIGURE S10. Height at ages 17 to 20 by preceding and subsequent birth intervals and by family size, Swedish men born 1962 to 1979. The analysis population for examining preceding birth intervals excludes first-borns. The analysis population for examining subsequent birth intervals excludes last-borns. Error bars are 95% confidence intervals.

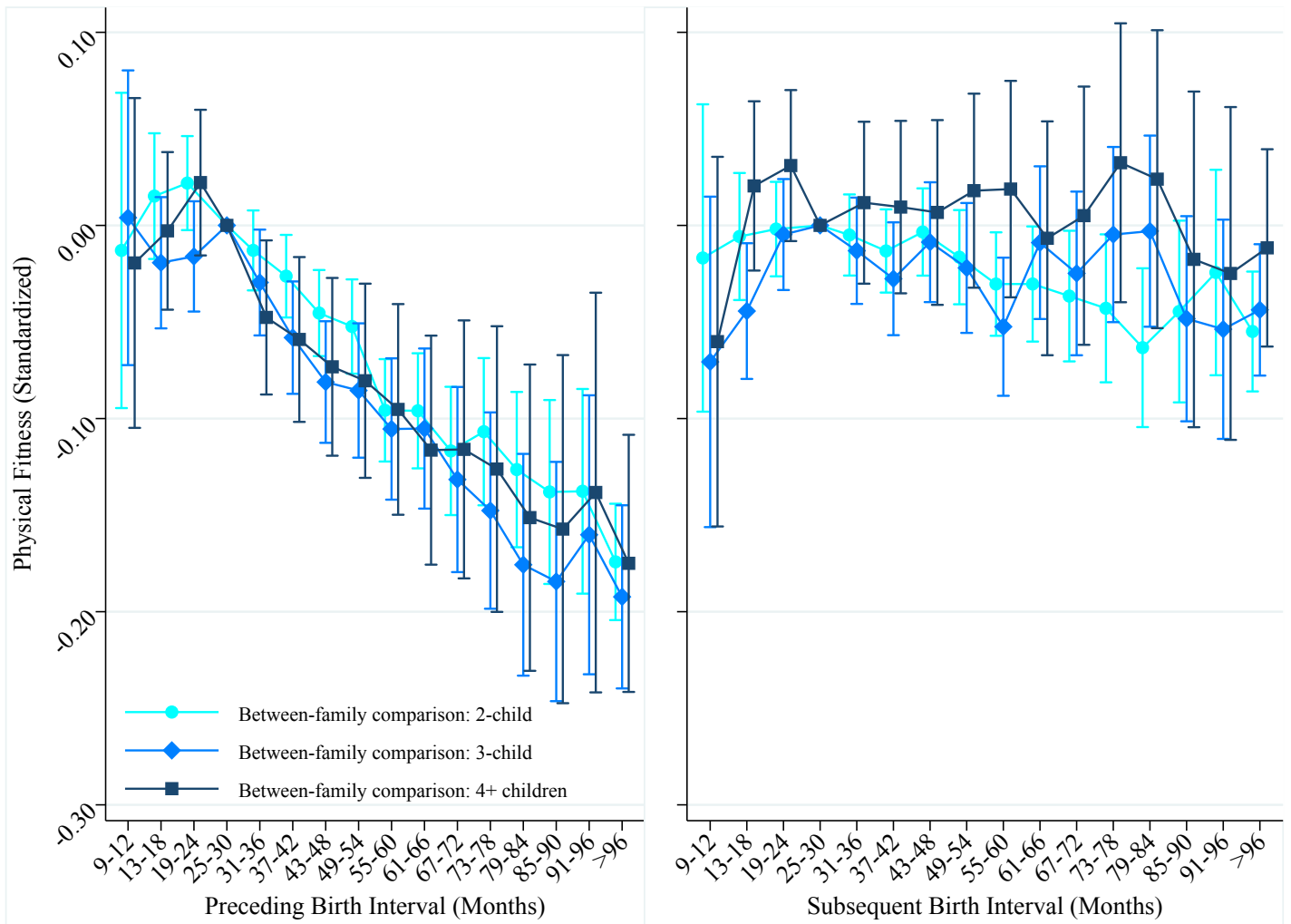


FIGURE S11. Physical fitness at ages 17 to 20 by preceding and subsequent birth intervals and by family size, Swedish men born 1962 to 1979. The analysis population for examining preceding birth intervals excludes first-borns. The analysis population for examining subsequent birth intervals excludes last-borns. Error bars are 95% confidence intervals.

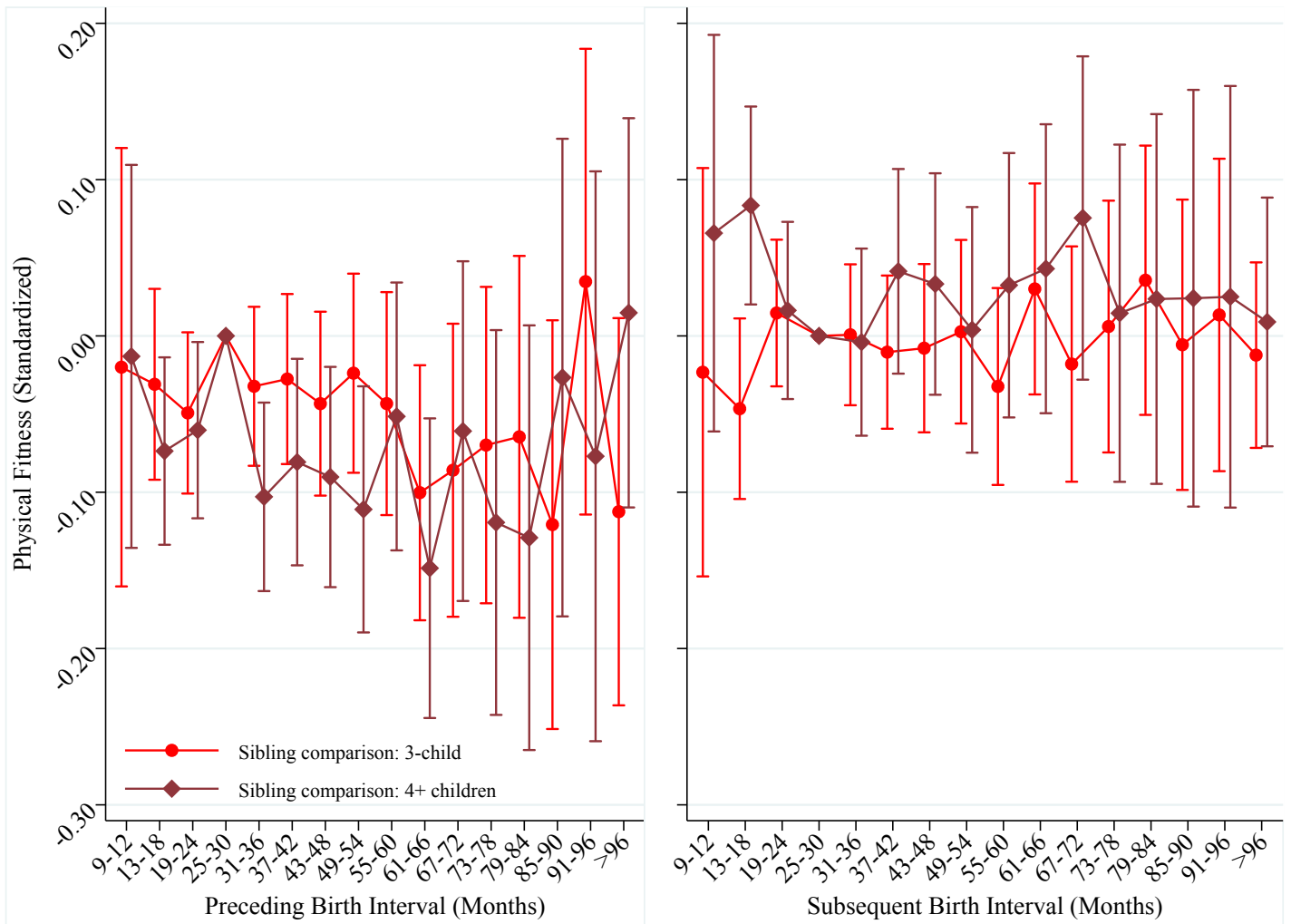


FIGURE S12. Physical fitness at ages 17 to 20 by preceding and subsequent birth intervals and by family size, Swedish men born 1962 to 1979. The analysis population for examining preceding birth intervals excludes first-borns. The analysis population for examining subsequent birth intervals excludes last-borns. Error bars are 95% confidence intervals.

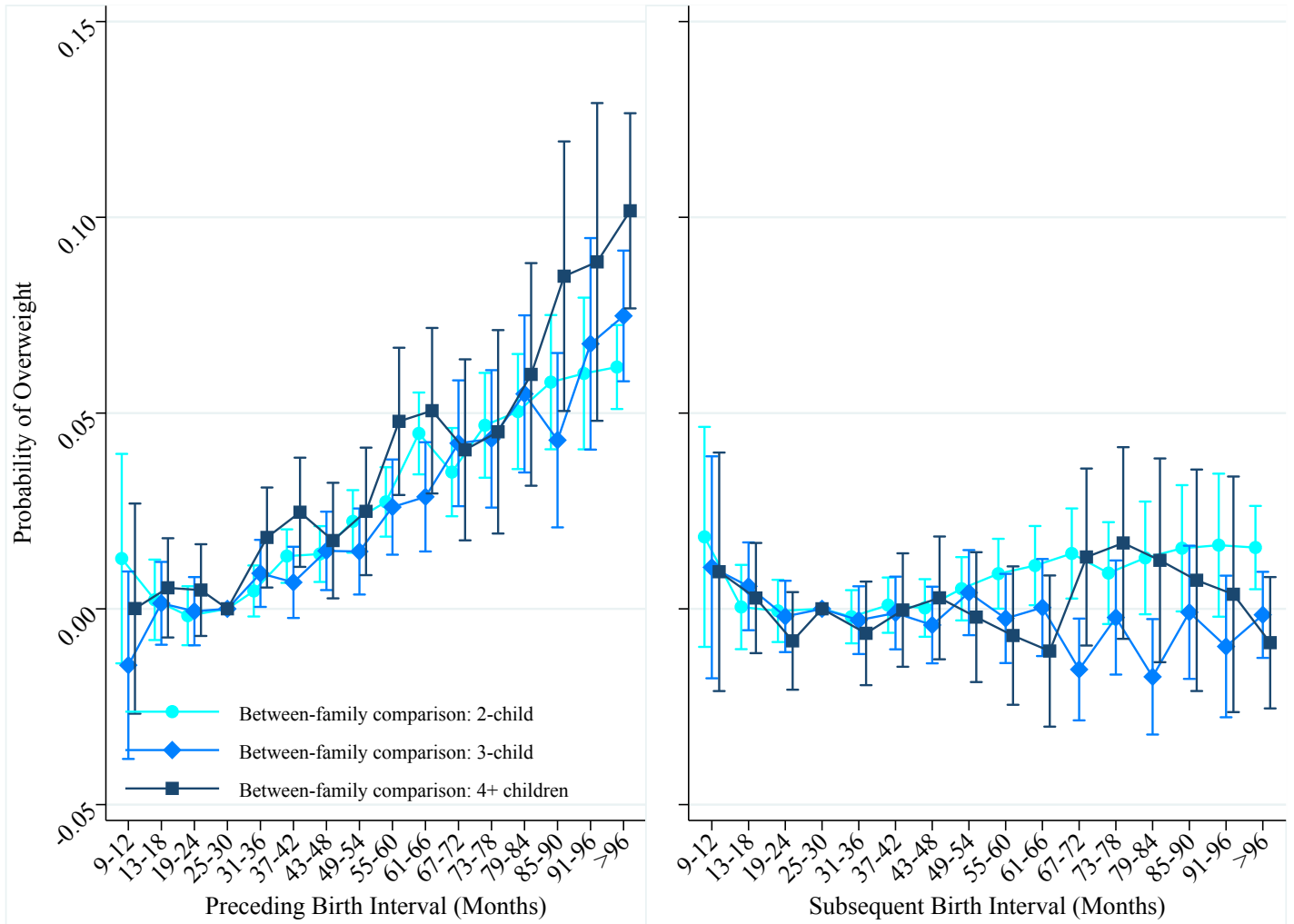


FIGURE S13. Predicted probability of being overweight or obese by preceding and subsequent birth intervals, Swedish men born 1962 to 1979. The analysis population for examining preceding birth intervals excludes first-borns. The analysis population for examining subsequent birth intervals excludes last-borns. Error bars are 95% confidence intervals.

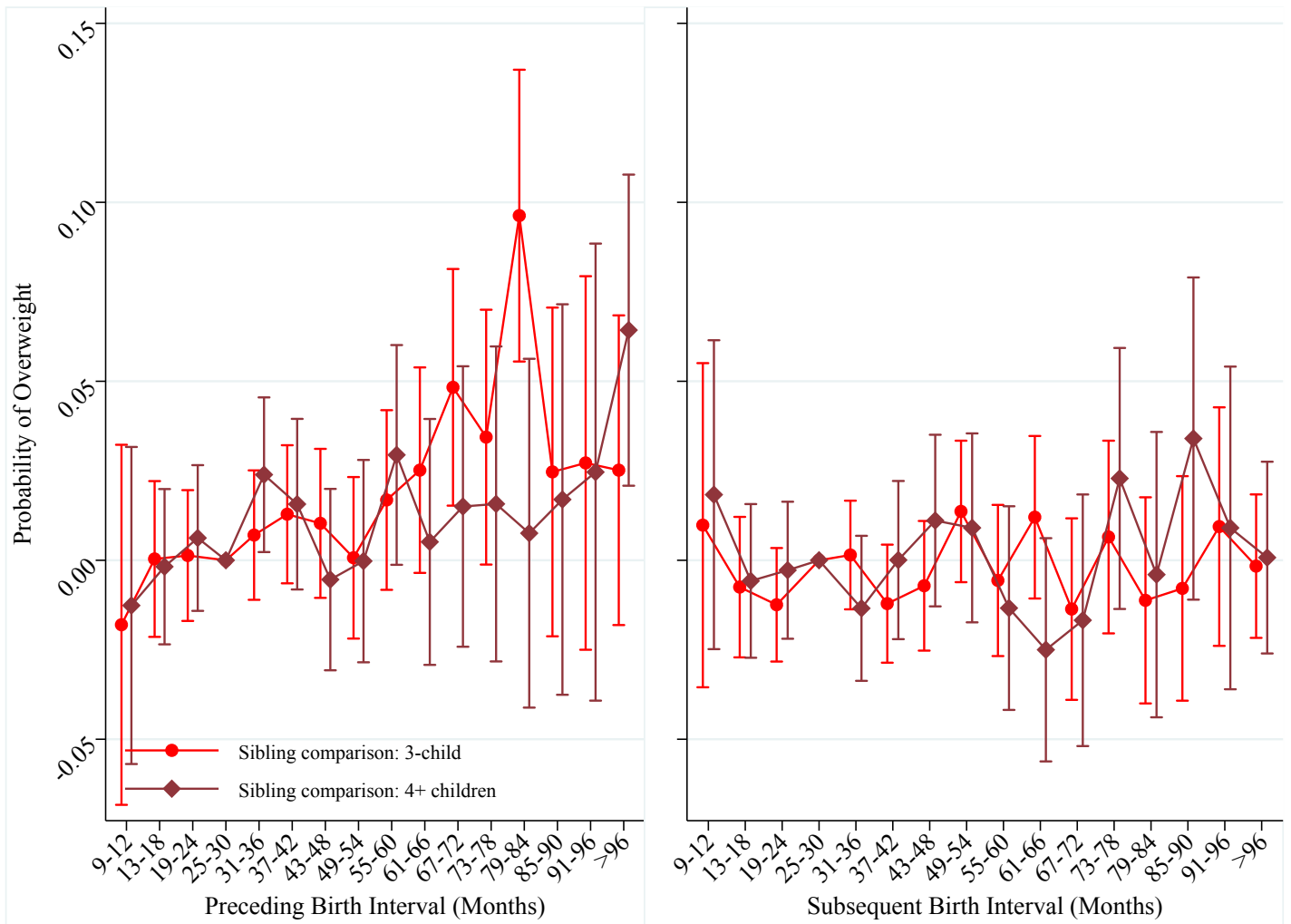


FIGURE S14. Predicted probability of being overweight or obese by preceding and subsequent birth intervals, Swedish men born 1962 to 1979. The analysis population for examining preceding birth intervals excludes first-borns. The analysis population for examining subsequent birth intervals excludes last-borns. Error bars are 95% confidence intervals.

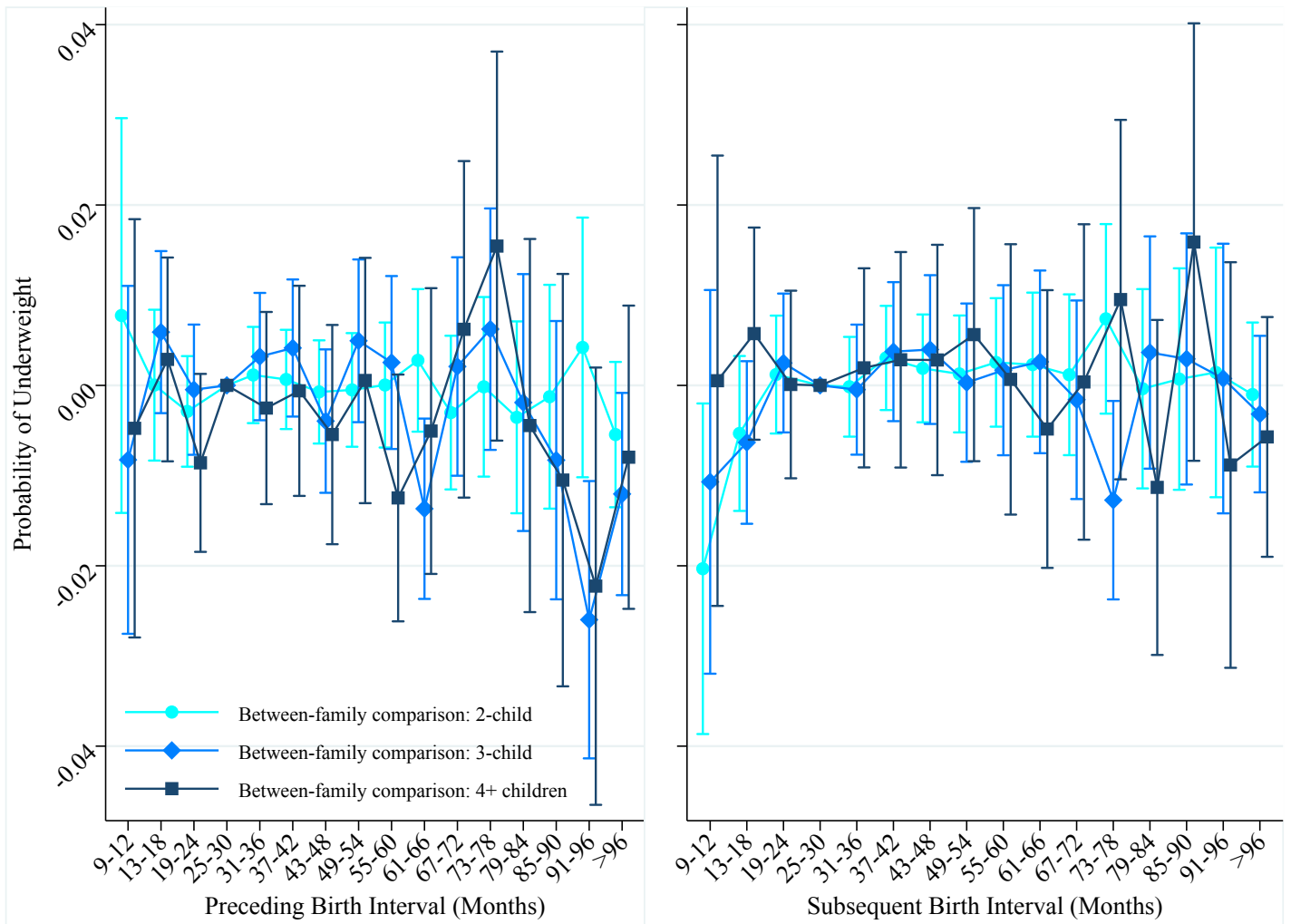


FIGURE S15. Predicted probability of being underweight by preceding and subsequent birth intervals, Swedish men born 1962 to 1979. The analysis population for examining preceding birth intervals excludes first-borns. The analysis population for examining subsequent birth intervals excludes last-borns. Error bars are 95% confidence intervals.

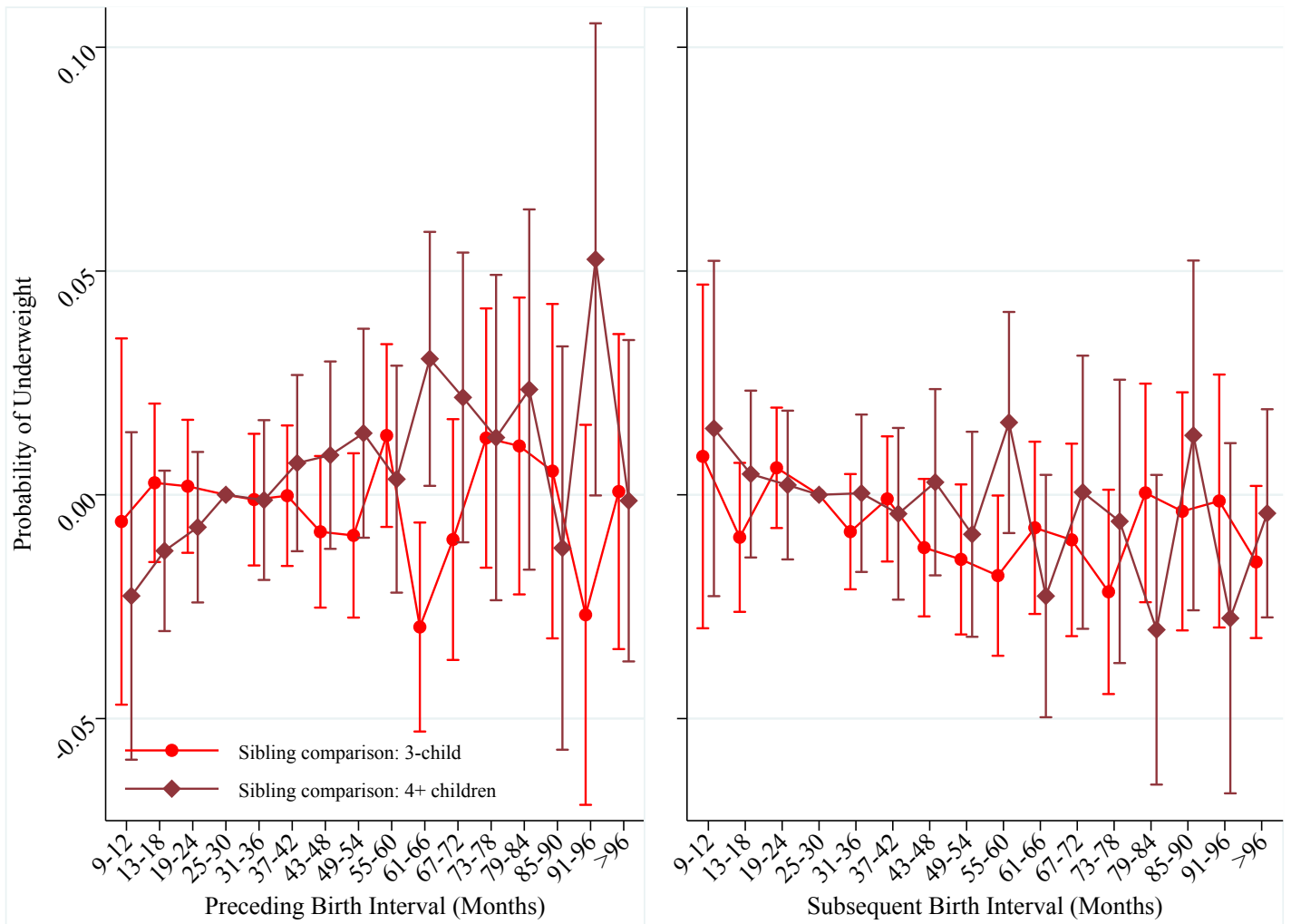


FIGURE S16. Predicted probability of being underweight by preceding and subsequent birth intervals, Swedish men born 1962 to 1979. The analysis population for examining preceding birth intervals excludes first-borns. The analysis population for examining subsequent birth intervals excludes last-borns. Error bars are 95% confidence intervals.

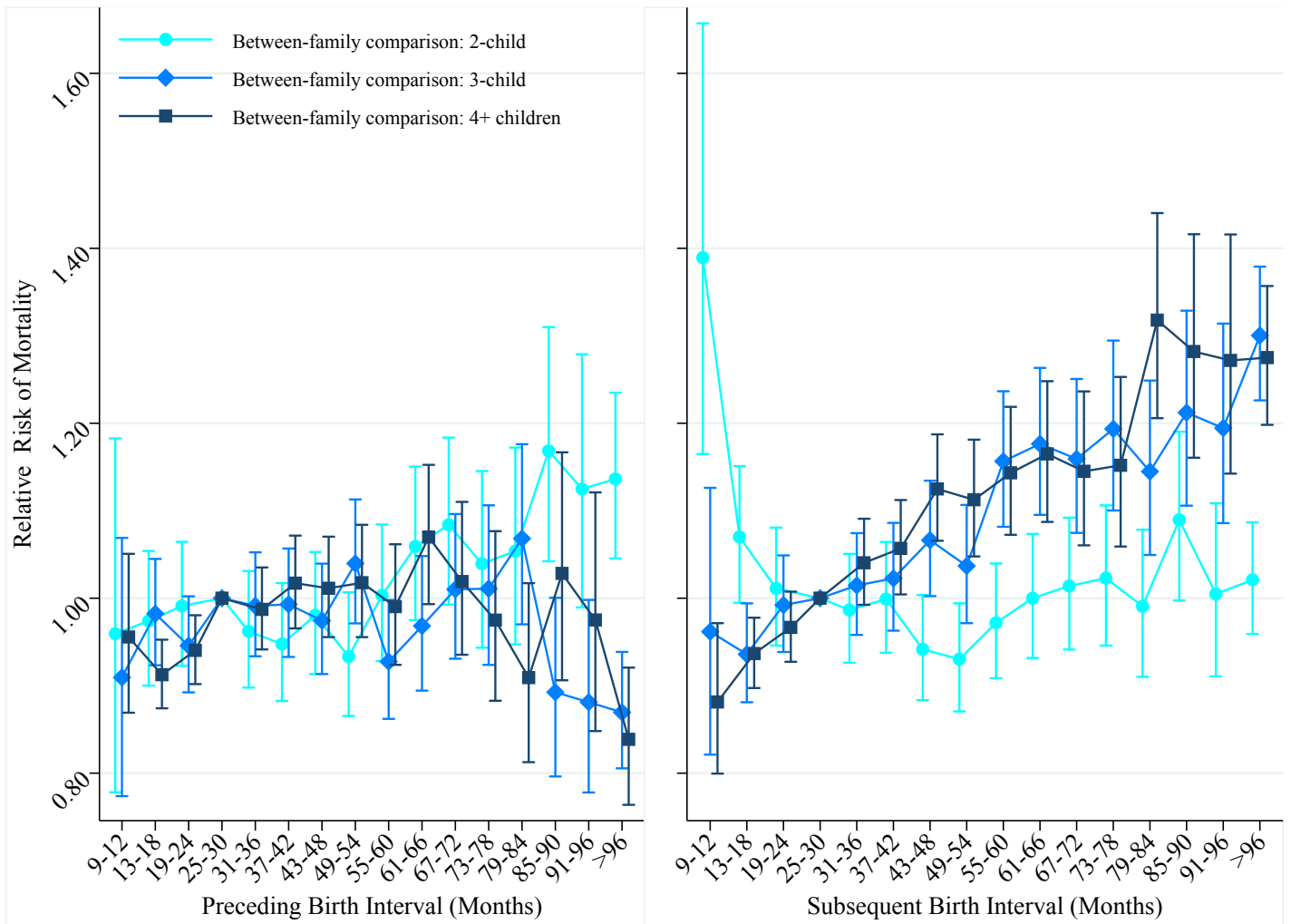


FIGURE S17. Hazard of mortality by preceding and subsequent birth intervals, Swedish men and women born 1938 to 1960. The analysis population for examining preceding birth intervals excludes first-borns. The analysis population for examining subsequent birth intervals excludes last-borns. Error bars are 95% confidence intervals.

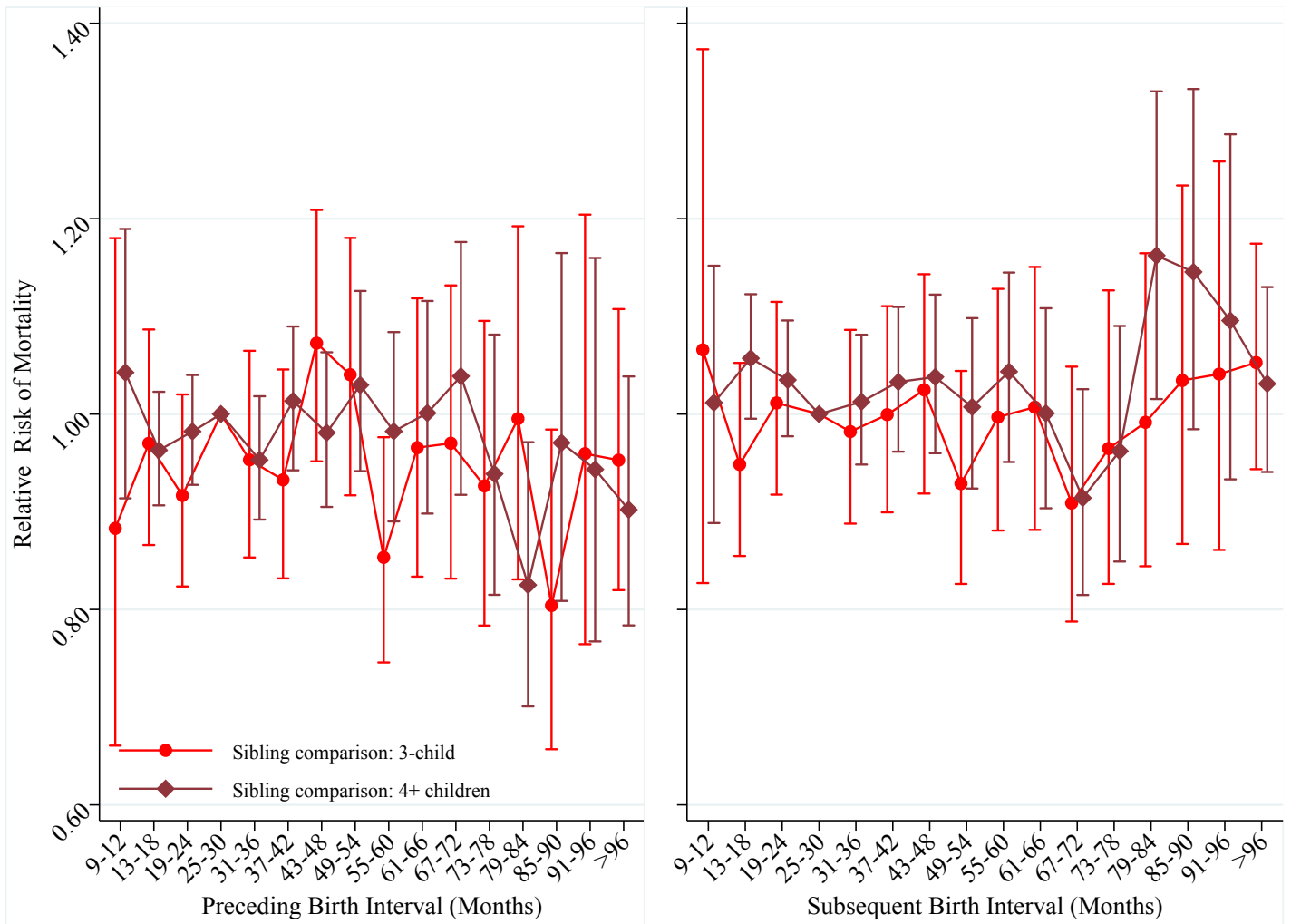


FIGURE S18. Hazard of mortality by preceding and subsequent birth intervals, Swedish men and women born 1938 to 1960. The analysis population for examining preceding birth intervals excludes first-borns. The analysis population for examining subsequent birth intervals excludes last-borns. Error bars are 95% confidence intervals.