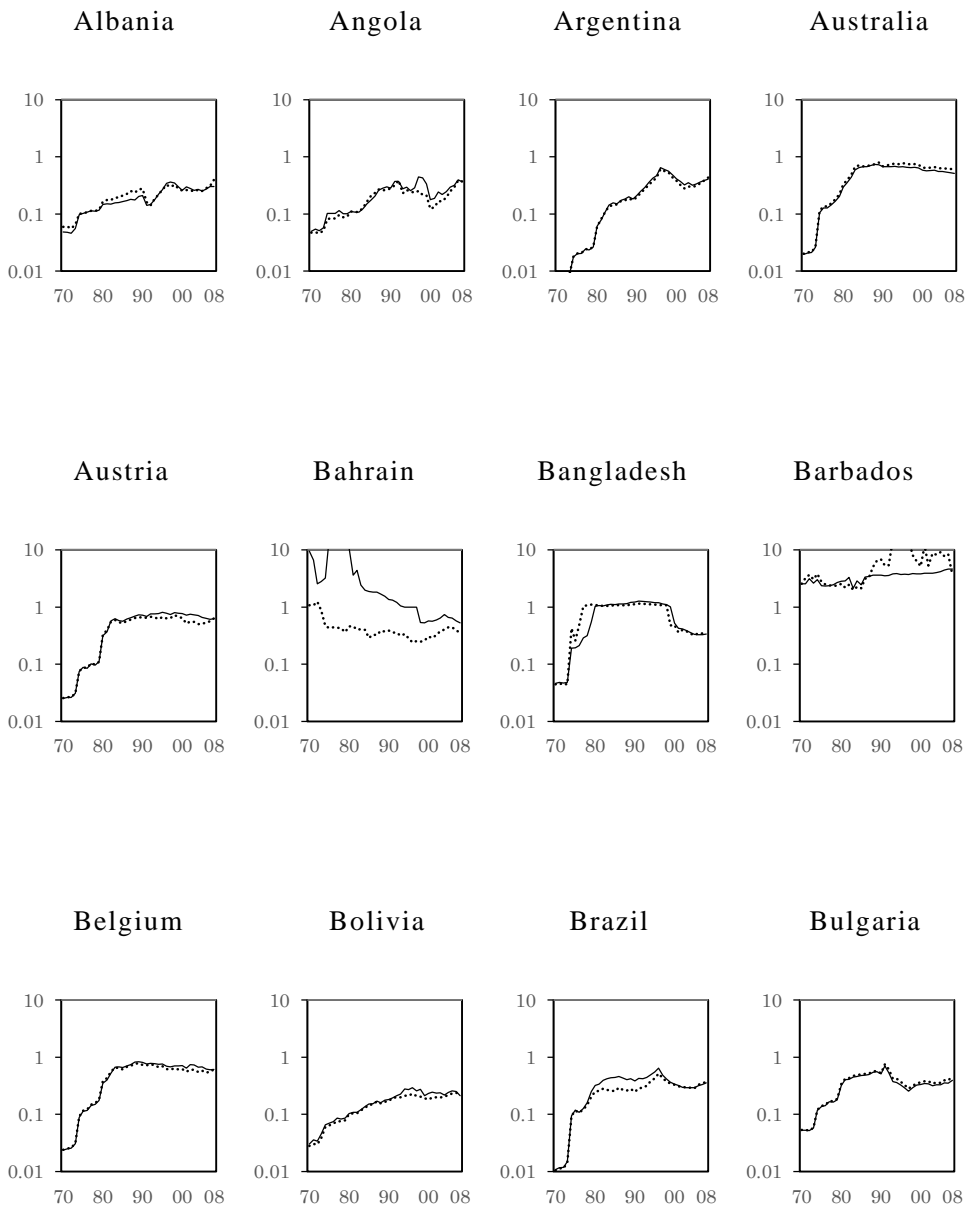


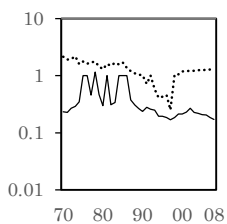
Additional file 1.

Figure S1. The environmental efficiency indices of 98 countries for SO₂ and CO₂

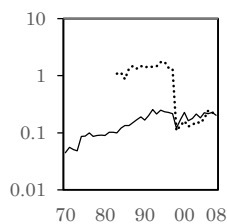
(1970-2008)



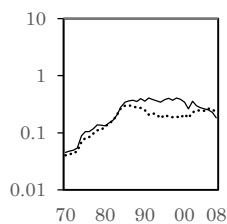
Burkina Faso



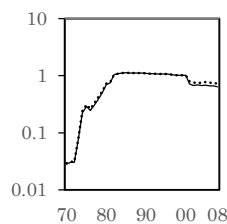
Cambodia



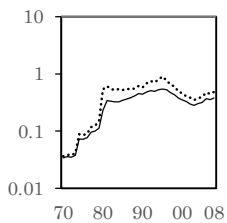
Cameroon



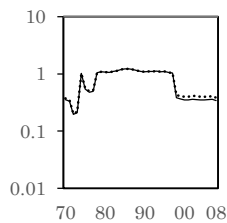
Canada



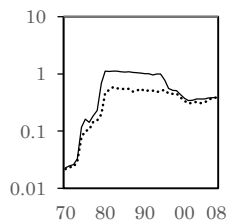
Chile



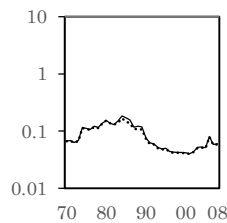
China



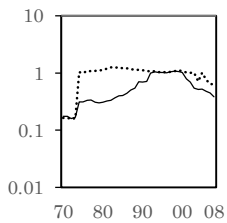
Colombia



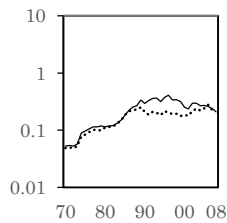
Congo, Dem. Rep.



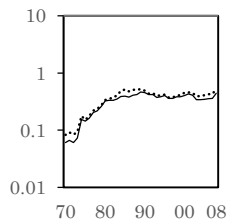
Costa Rica



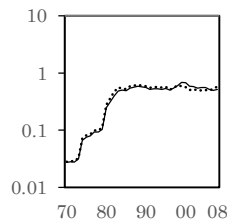
Cote d'Ivoire



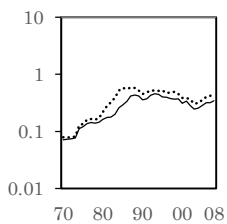
Cyprus



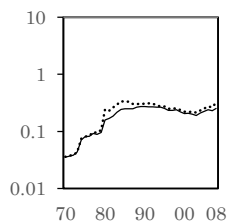
Denmark



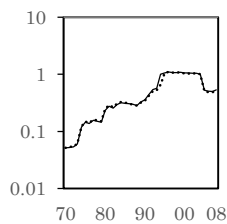
Dominican Republic



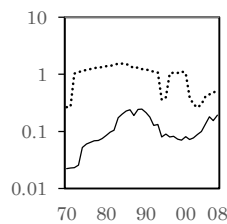
Ecuador



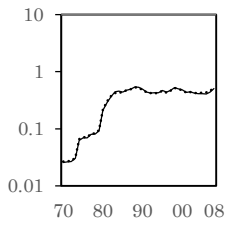
Egypt



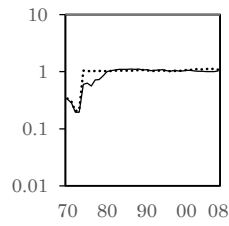
Ethiopia



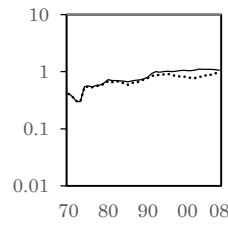
Finland



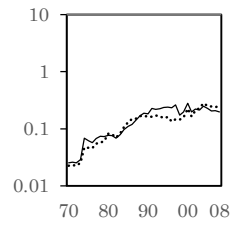
France



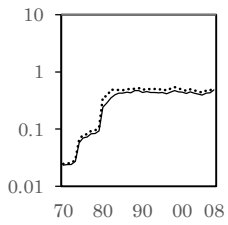
Germany



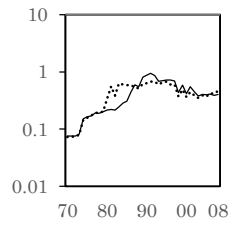
Ghana



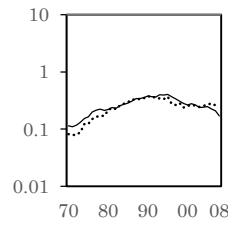
Greece



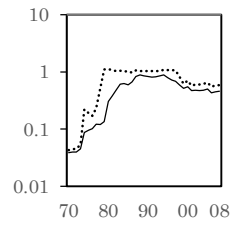
Guatemala



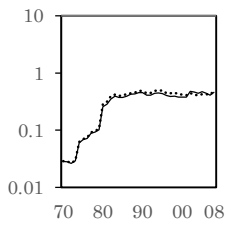
Honduras



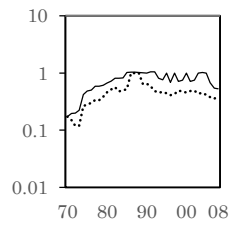
Hong Kong



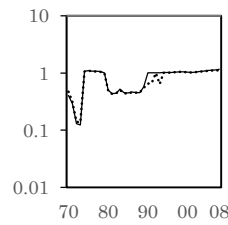
Hungary



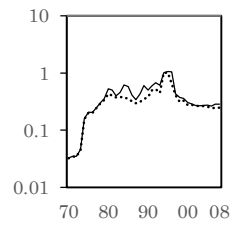
Iceland



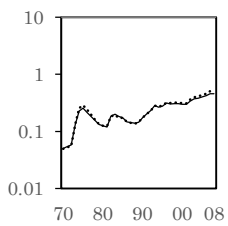
India



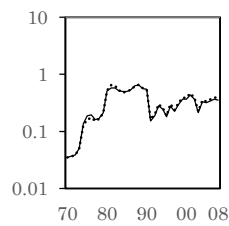
Indonesia



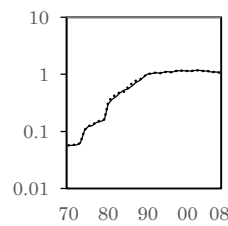
Iran



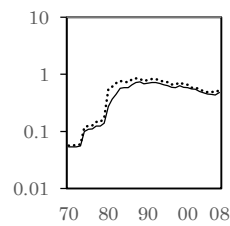
Iraq



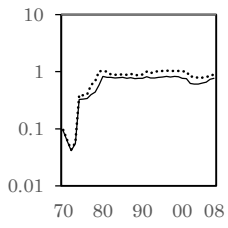
Ireland



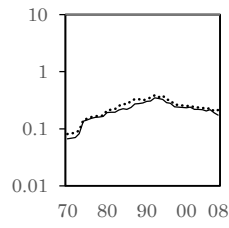
Israel



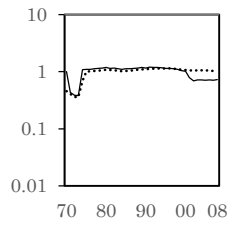
Italy



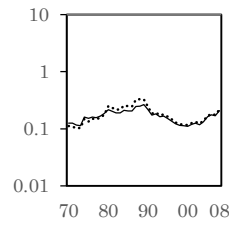
Jamaica



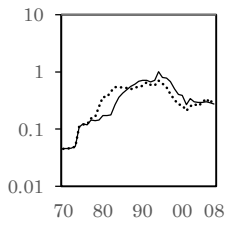
Japan



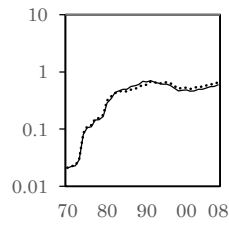
Jordan



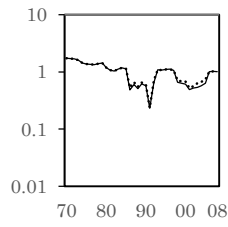
Kenya



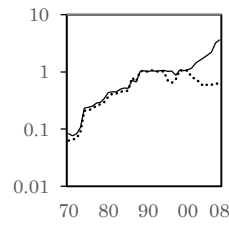
Korea, Republic of



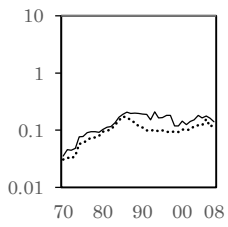
Kuwait



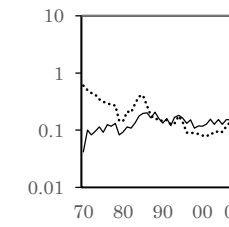
Luxembourg



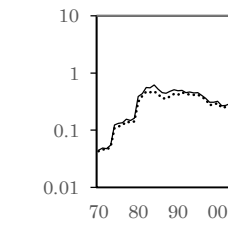
Madagascar



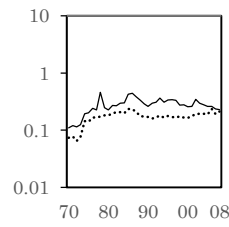
Malawi



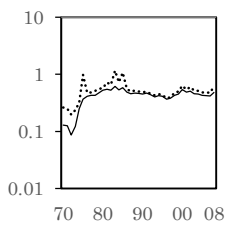
Malaysia



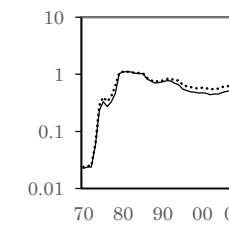
Mali



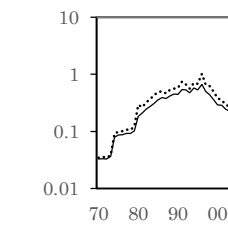
Malta



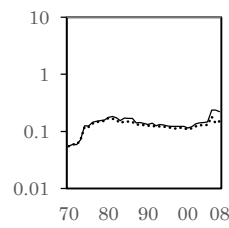
Mexico



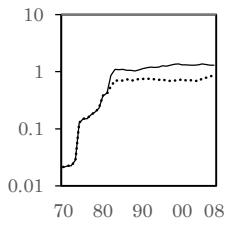
Morocco



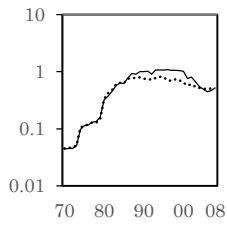
Mozambique



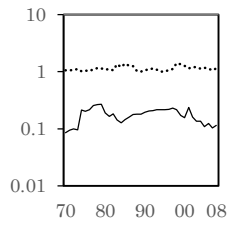
Netherlands



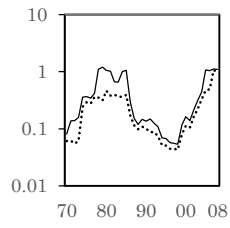
New Zealand



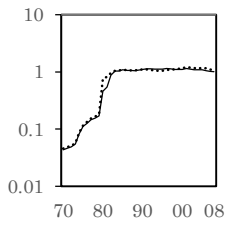
Niger



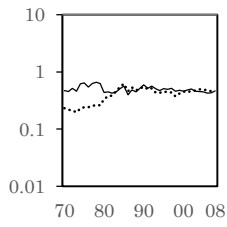
Nigeria



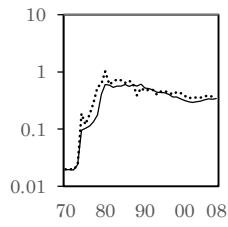
Norway



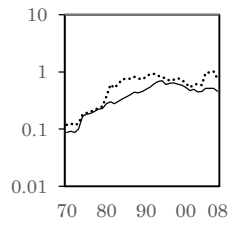
Oman



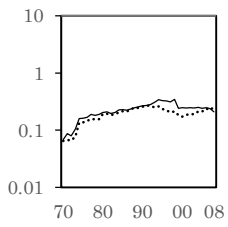
Pakistan



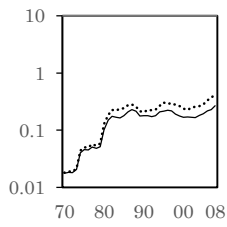
Panama



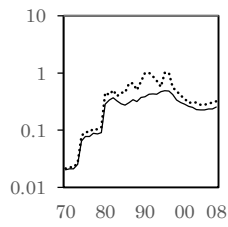
Paraguay



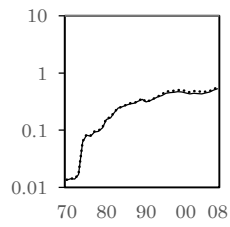
Peru



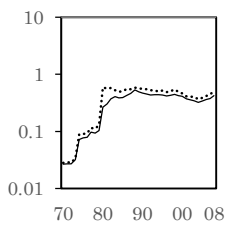
Philippines



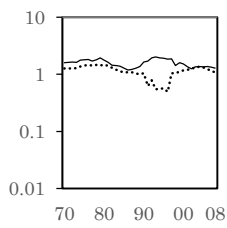
Poland



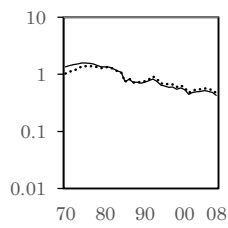
Portugal



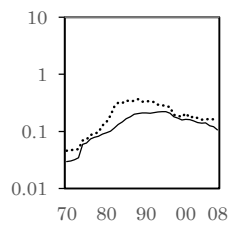
Qatar



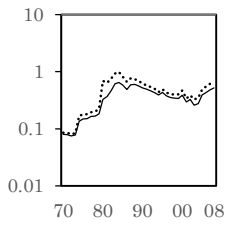
Saudi Arabia



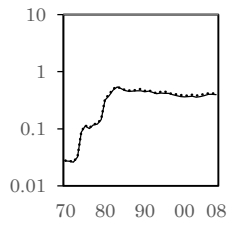
Senegal



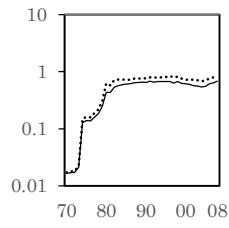
Singapore



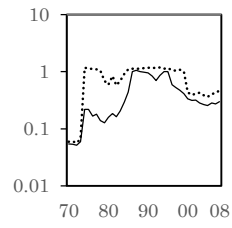
South Africa



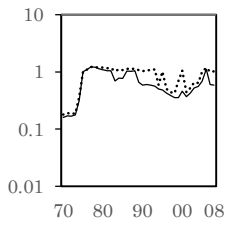
Spain



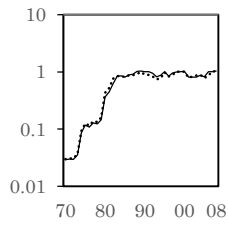
Sri Lanka



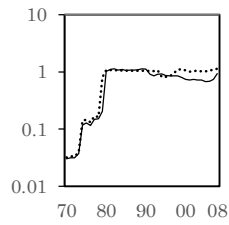
Sudan



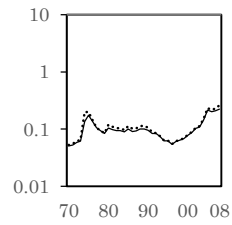
Sweden



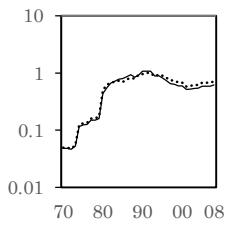
Switzerland



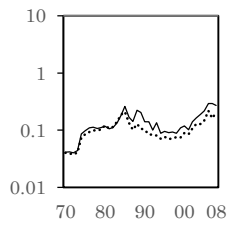
Syria



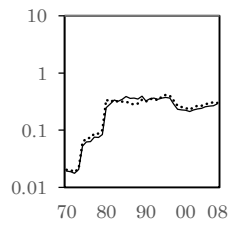
Taiwan



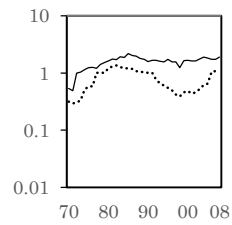
Tanzania



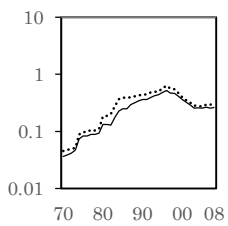
Thailand



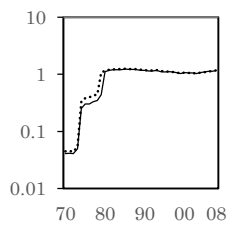
Trinidad & Tobago



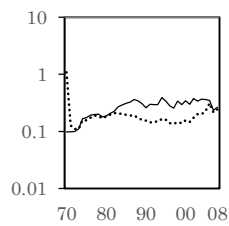
Tunisia



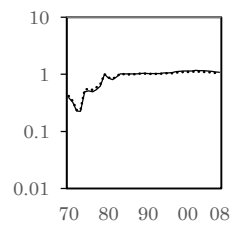
Turkey



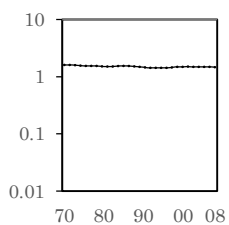
Uganda



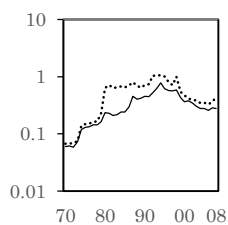
United Kingdom



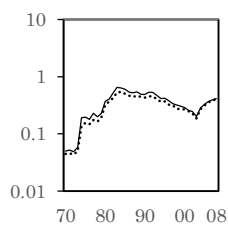
United States



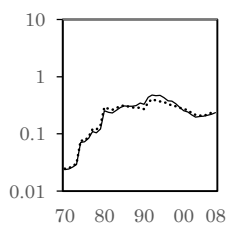
Uruguay



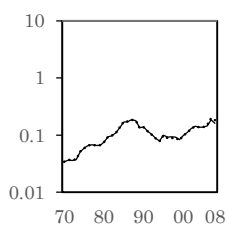
Venezuela



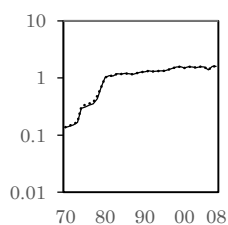
Vietnam



Zambia



Zimbabwe



(Note) Solid and dotted lines present environmental efficiency for SO₂ and CO₂, respectively.

Note that the vertical axis is a logarithmic axis for visualization. CO₂ environmental efficiency

scores of Cambodia for 1970–1982 are not presented because of non-existence of solutions for the

linear programming problem.