

**SUPPORTING INFORMATION FOR:
World impact of kernel EU 9 countries
from Google matrix analysis of UN COMTRADE network**

Justin Loye^{1,2}, Leonardo Ermann^{3,4}, Dima L. Shepelyansky^{1,*}

1 Laboratoire de Physique Théorique du CNRS, IRSAMC, Université de Toulouse, CNRS, UPS, 31062 Toulouse, France

2 Institut de Recherche en Informatique de Toulouse, Université de Toulouse, UPS, 31062 Toulouse, France

3 Departamento de Física Teórica, GIyA, Comisión Nacional de Energía Atómica. Av. del Libertador 8250, 1429 Buenos Aires, Argentina

4 Consejo Nacional de Investigaciones Científicas y Técnicas (CONICET), Buenos Aires, Argentina

* Webpage: www.quantware.ups-tlse.fr/dima

Additional data

Here we present additional Figures related to the material presented in the main part of the article.

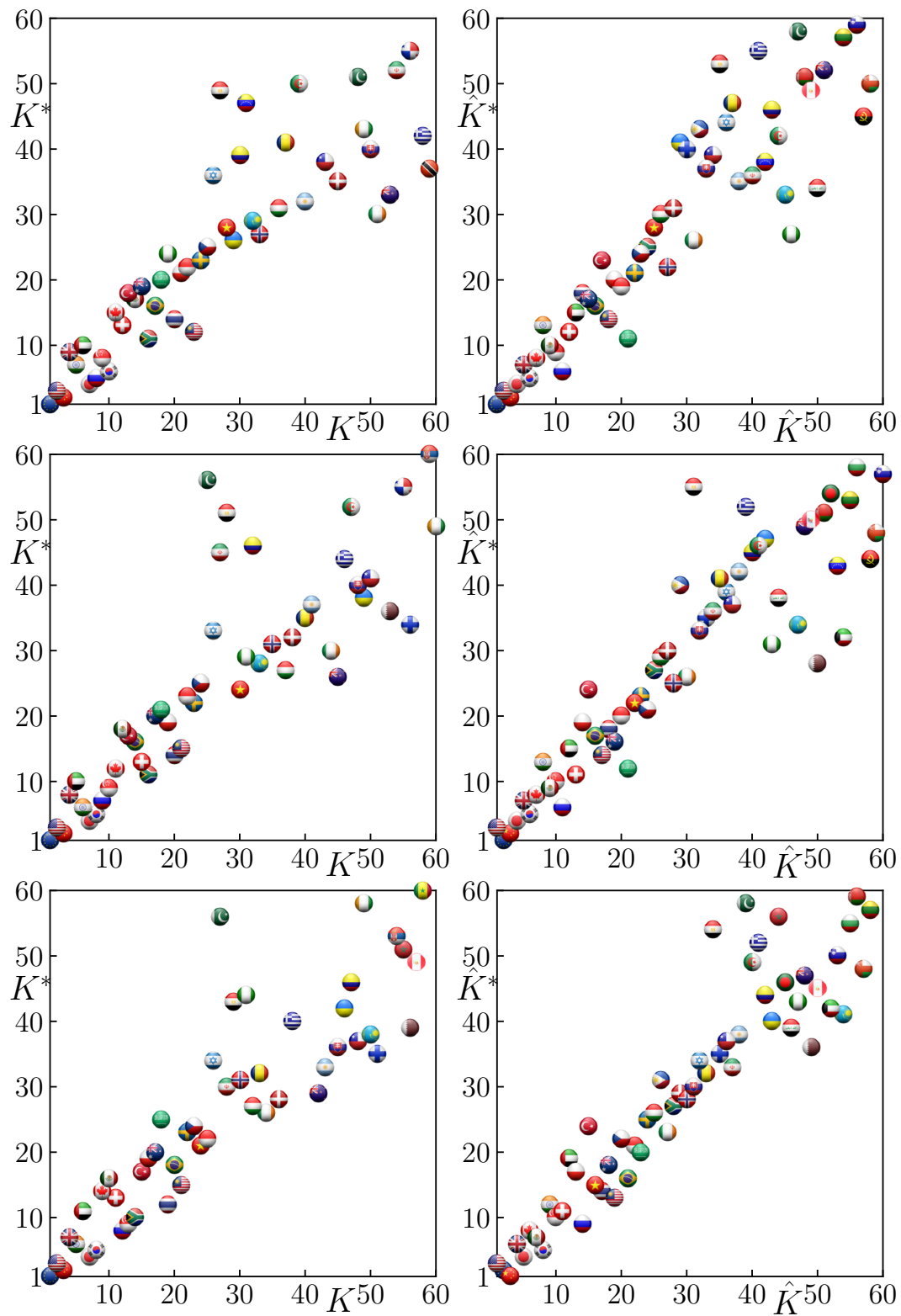


Figure A1. Same as Fig.1 for years 2012, 2014, 2016 (from top to bottom).

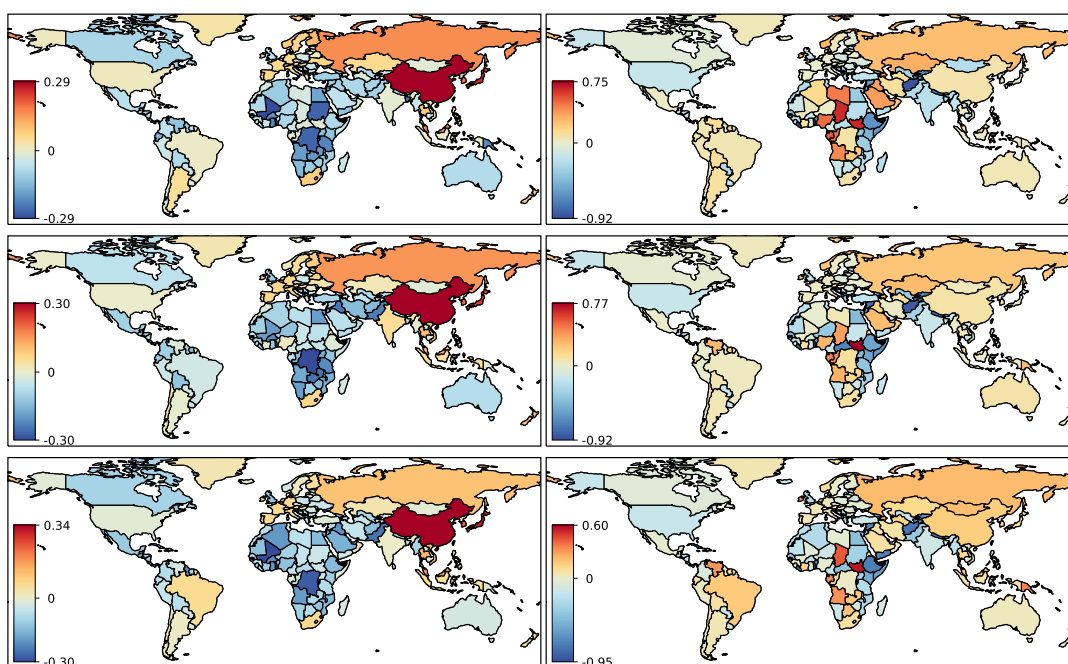


Figure A2. Same as Fig.2, left column shows data from CheiRank and PageRank vectors, right column shows data from Export and Import volumes; data are given for years 2012, 2014, 2016 (from top to bottom).

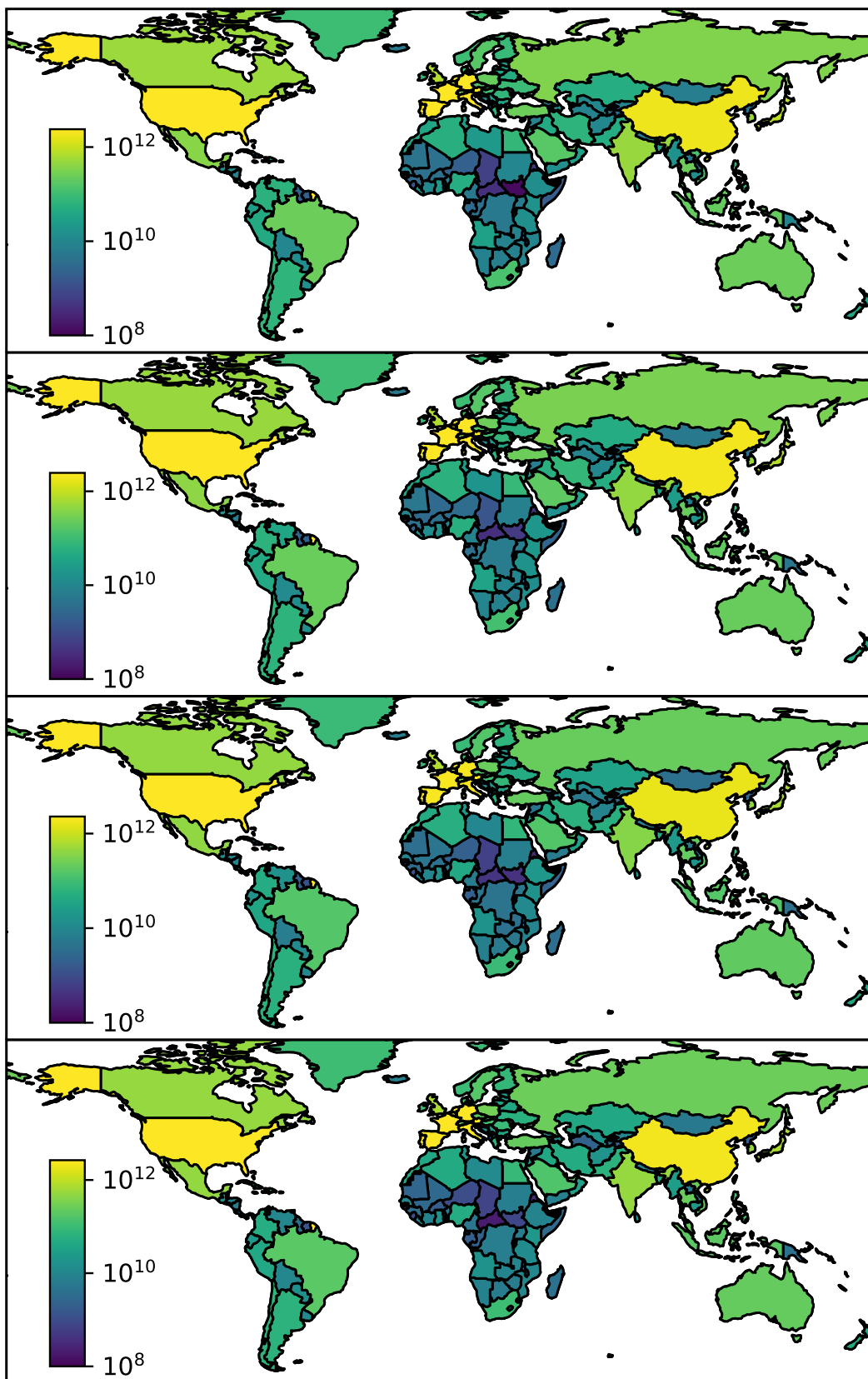


Figure A3. World map of countries Import volume in USD for years 2012, 2014, 2016 (from top to bottom); values lower than 10^8 are clipped for better visibility.

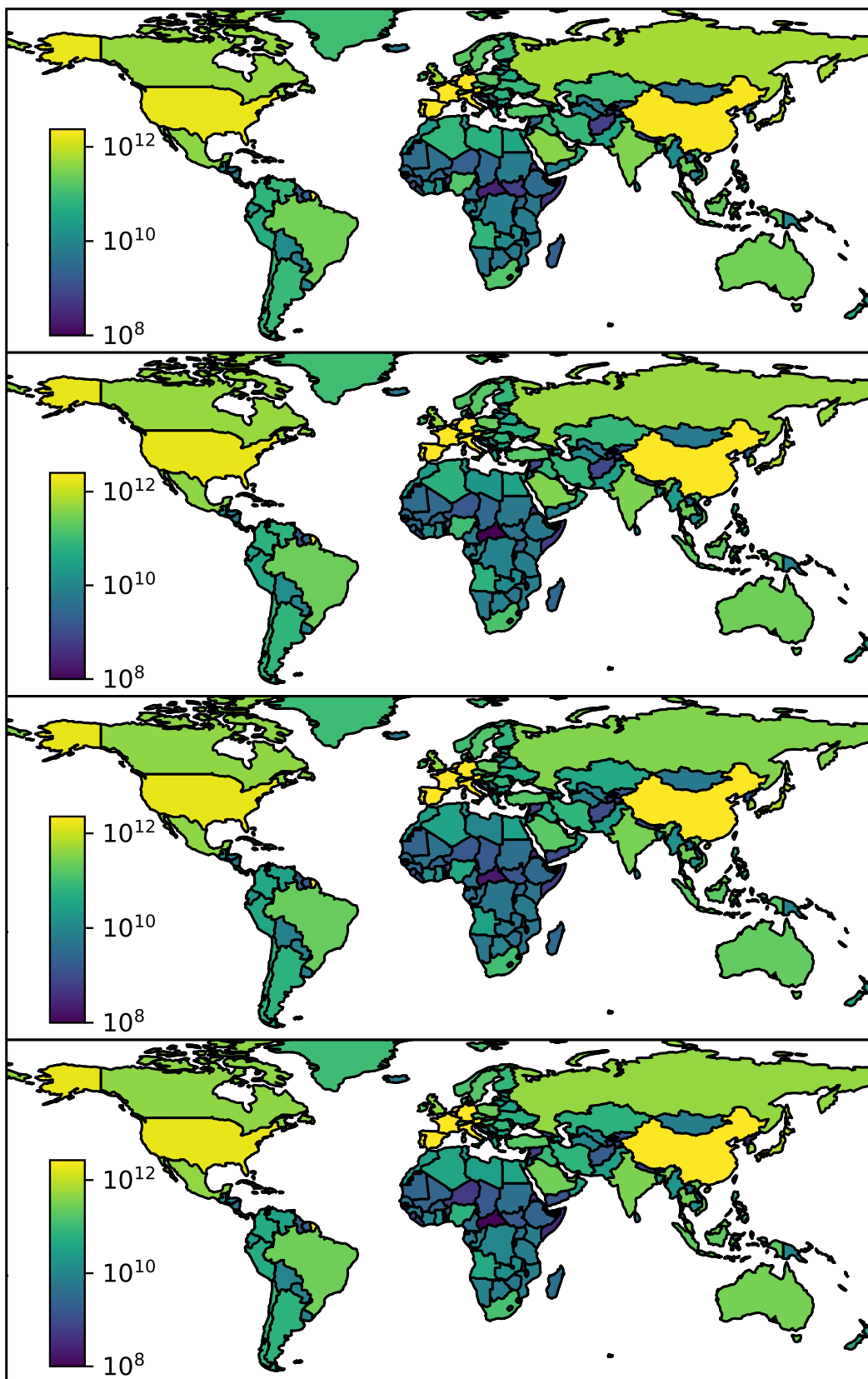


Figure A4. World map of countries Export volume in USD for years 2012, 2014, 2016 (from top to bottom); values lower than 10^8 are clipped for better visibility.

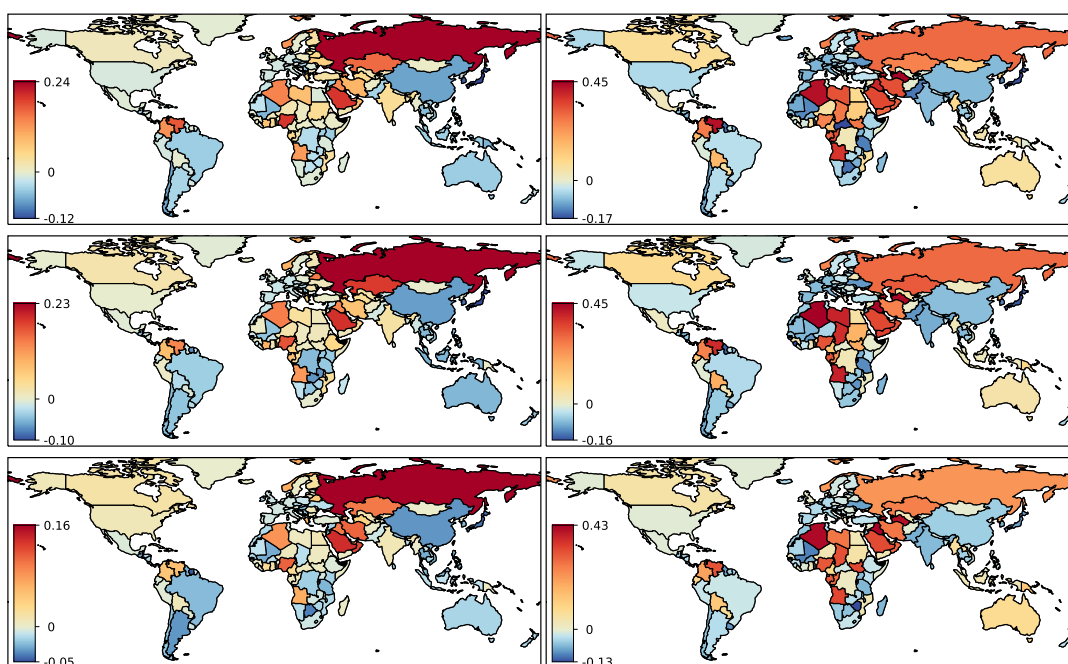


Figure A5. Same as Fig.3, left column shows data from CheiRank and PageRank vectors, right column shows data from Export and Import volumes; data are given for years 2012, 2014, 2016 (from top to bottom).

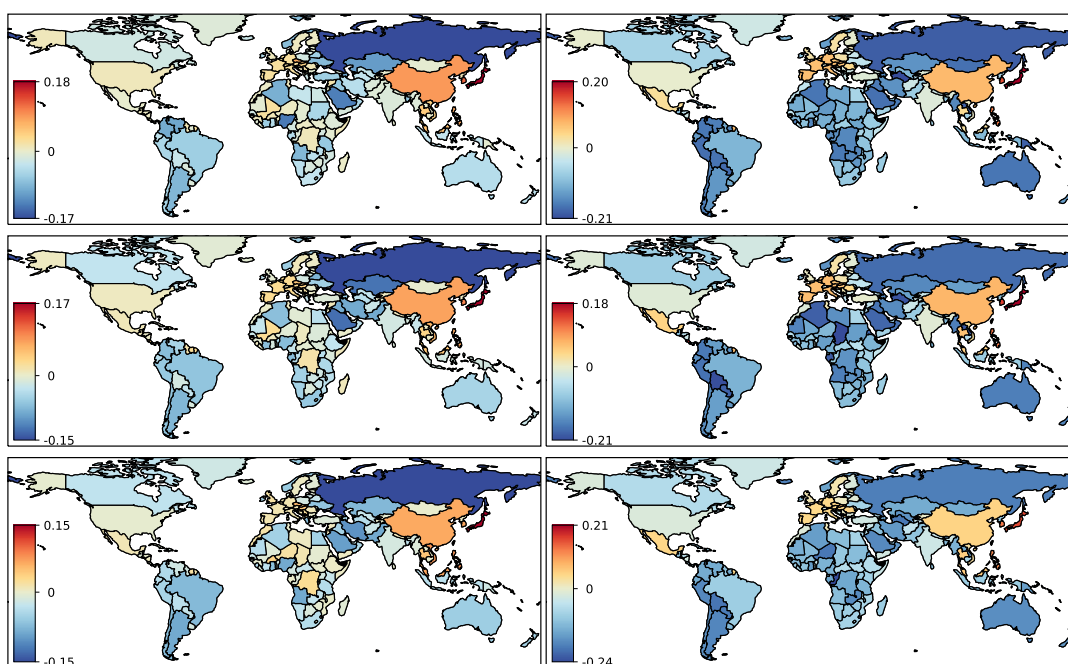


Figure A6. Same as Fig.4, left column shows data from CheiRank and PageRank vectors, right column shows data from Export and Import volumes; data are given for years 2012, 2014, 2016 (from top to bottom).